



# **DG-WM6305SIE2**

## **User Manual**

**V1.0**

**2019-01-17**

As our products undergo continuous development the specifications are subject to change without prior notice.

# COPYRIGHT

Copyright 2019 by Digisol Systems Ltd. All rights reserved.

Company has an ongoing policy of upgrading its products and it may be possible that information in this document is not up-to-date.

Please check with your local distributors for latest information. No part of this document can be copied or reproduced in any form without written consent from the company.

# Trademark

DIGISOL™ is a trademark of Digisol Systems Ltd. All other trademarks are the property of the respective manufacturers.

# INDEX

1. Hardware and Operation Mode Instruction.....	4
1.1. LED indicator:.....	4
1.2. AP Interface:.....	4
1.3. Power Supply:.....	5
1.3.1. PoE Adapter Power Supply:.....	5
1.3.2. PoE Switch Power Supply.....	5
1.4. AP installation:.....	6
2. Connect Wireless AP with PC:.....	7
3. Login.....	8
4. WEB GUI interface Setting:.....	10
4.1. Home.....	10
4.2. Wizard Configuration:.....	12
4.2.1. Gateway Mode:.....	12
4.2.2. WiFi Repeater mode.....	14
4.2.3. WISP Operation mode:.....	16
4.2.4. AP Operation mode:.....	18
4.3. WiFi:.....	20
4.4. Network:.....	23
4.5. Manage:.....	24
5. Share Internet and Obtain IP address automatically.....	27
Trouble Shooting.....	28

# 1. Hardware and Operation Mode Instruction



## Package Contents

Before using this access point, please check if there is anything missing in the package, and contact your dealer of purchase to claim for missing items:

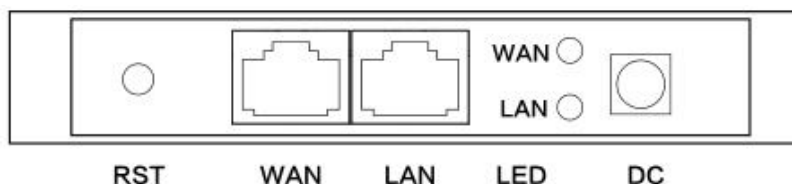
- DG-WM6305SIE2 Ceiling Mount Access Point
- DC 12V Power Adapter
- Patch Cord
- Installation Guide
- User Manual CD
- Mounting Screws

## 1.1. LED Indicator

Green:- Power Indicator

Blue:- WiFi Indicator

## 1.2. AP Interface



RST	Reset Button, it make AP revert to default settings after pressing it for 15 seconds.
WAN	WAN Port, connect with ADSL modem or Internet mainly. It will be LAN port under Wireless AP and WiFi Repeater operation mode
LAN	LAN Port to end users
LED	LED Indicator for WAN port and LAN port
DC	DC power connector

## 1.3. Power Supply

### 1.3.1 PoE Adapter Power Supply:

The connection diagram shown as P1, internet cable connect to PoE adapter's LAN Port, Ceiling AP's WAN port connect to PoE adapter's PoE Port, then PC will access into ceiling AP through cable or wireless.

The wireless AP support 48V IEEE802.3af PoE, so PoE adapter should be 48V IEEE802.3af PoE standard.



P1

### 1.3.2. PoE Switch Power Supply

The connection diagram shown as P2, Internet cable from PoE Switch to Ceiling AP's WAN Port, then PC access into ceiling AP via wired/wireless.

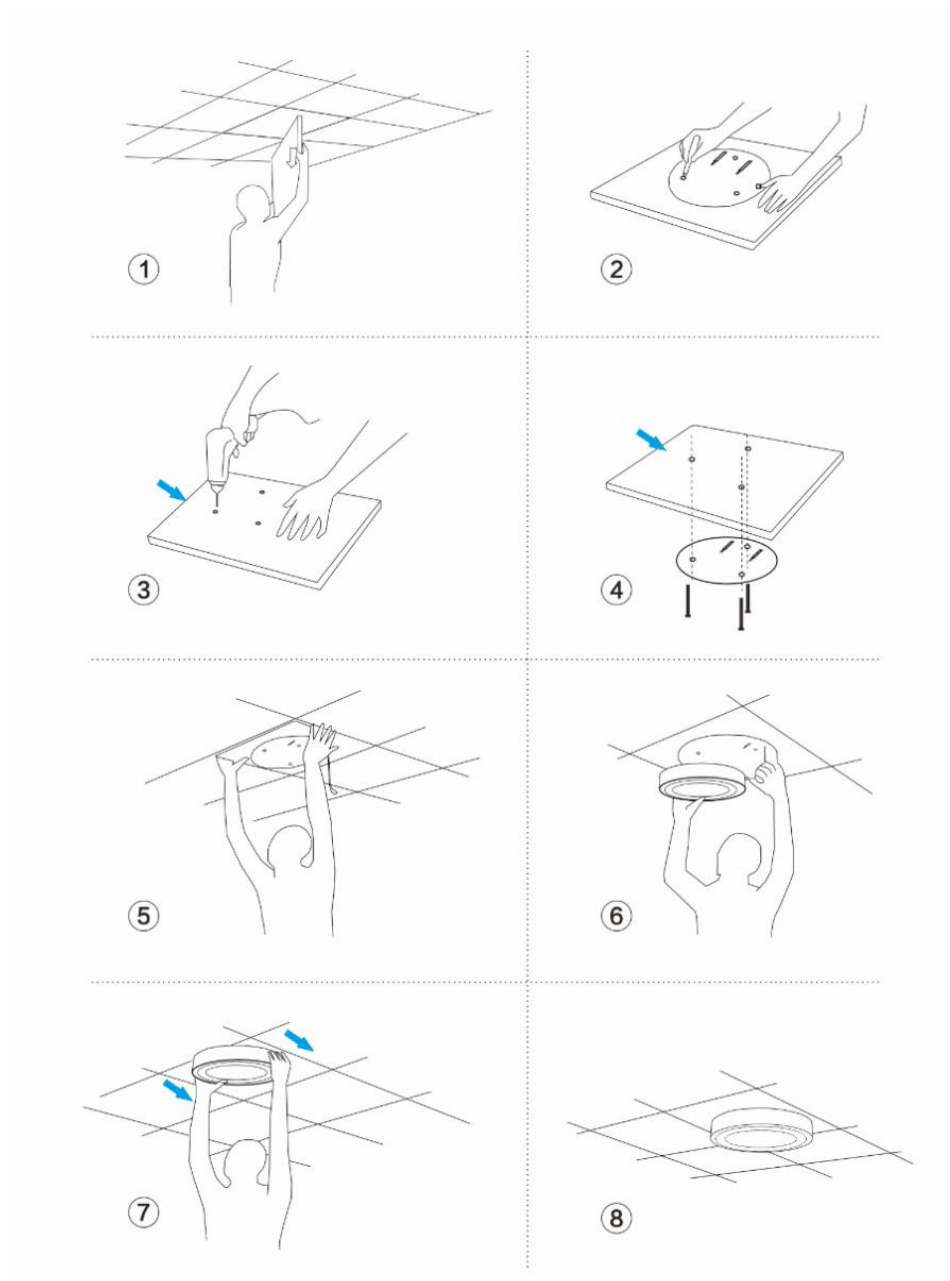
Pls note the wireless AP support 48V IEEE802.3af PoE, the PoE switch should comply with 48V IEEE802.3af PoE standard.



P2

## 1.4. AP Installation

For the Ceiling Wireless AP, will be installed under ceiling based on following steps:

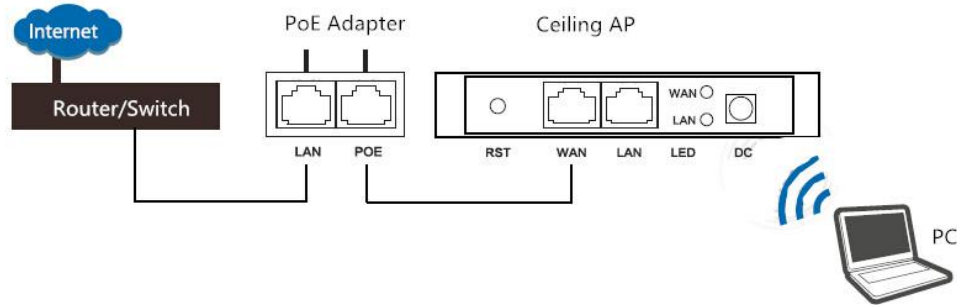


## 2. Connect Wireless AP with PC

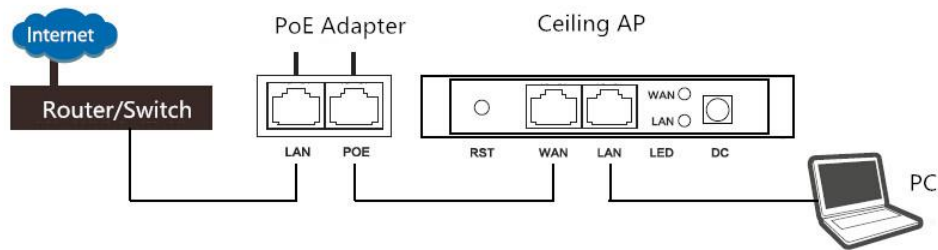
You can connect the PC with wireless AP by Wireless SSID and LAN cable:

The diagram of wireless connection showed as follow:

Pls note: the default SSID is **DG-WM6305SIE2**, SSID's password is **blank**



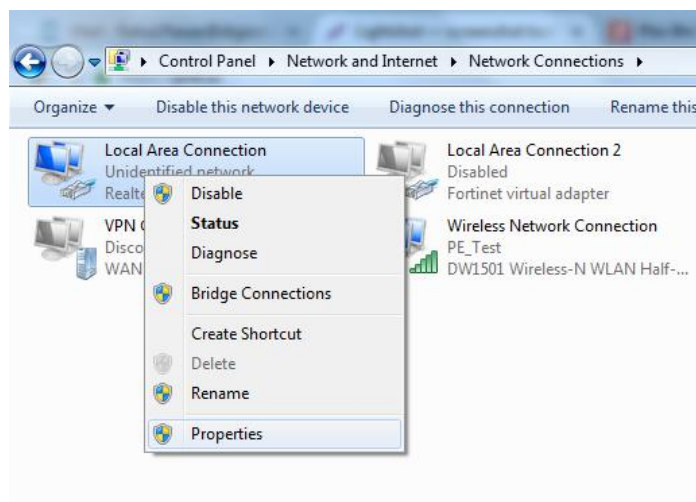
**P3.** Connect the PC to AP using WiFi as shown above



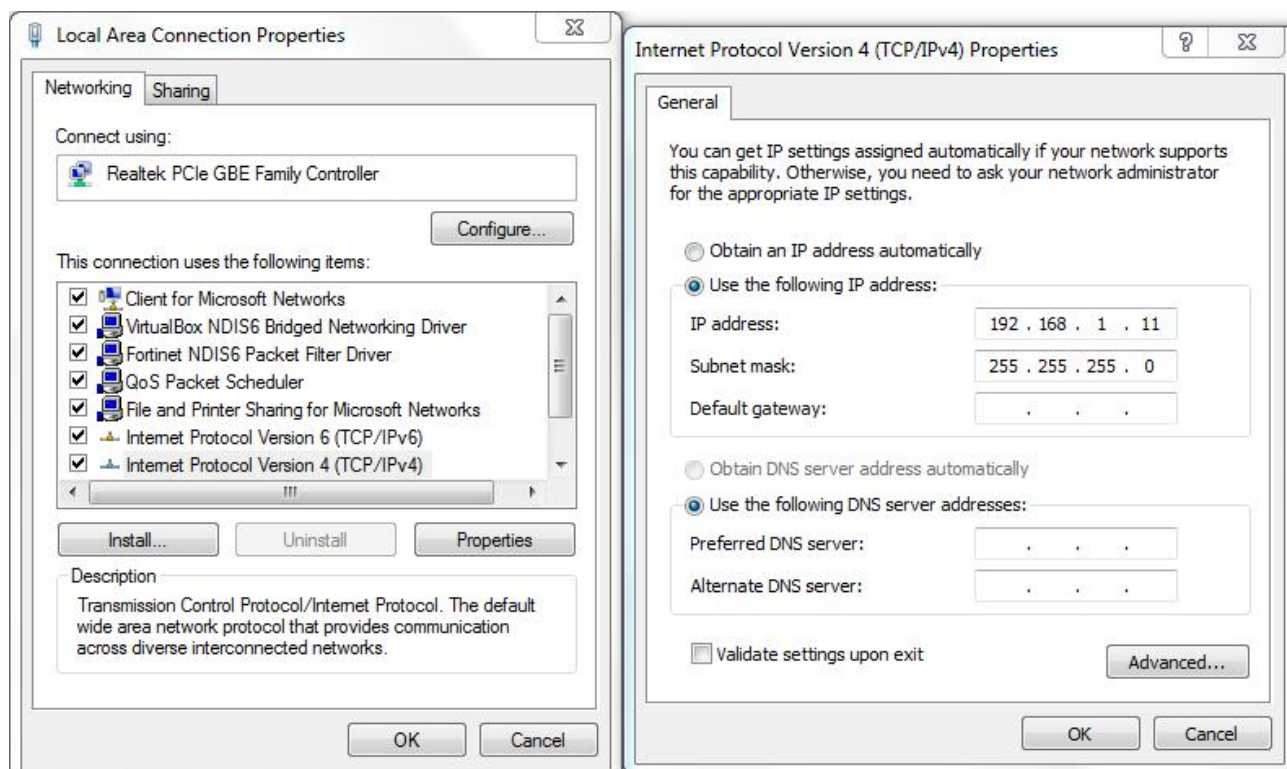
**P4.** Connect the PC to AP using LAN cable as shown above

## 3. Login

1. Connect the Ceiling AP with computer by wired or wireless
2. The default IP address of this wireless AP is 192.168.1.200. Configure the PC's local connection IP address as 192.168.1.X (X is number from 2 to 254), subnet mask is 255.255.255.0.

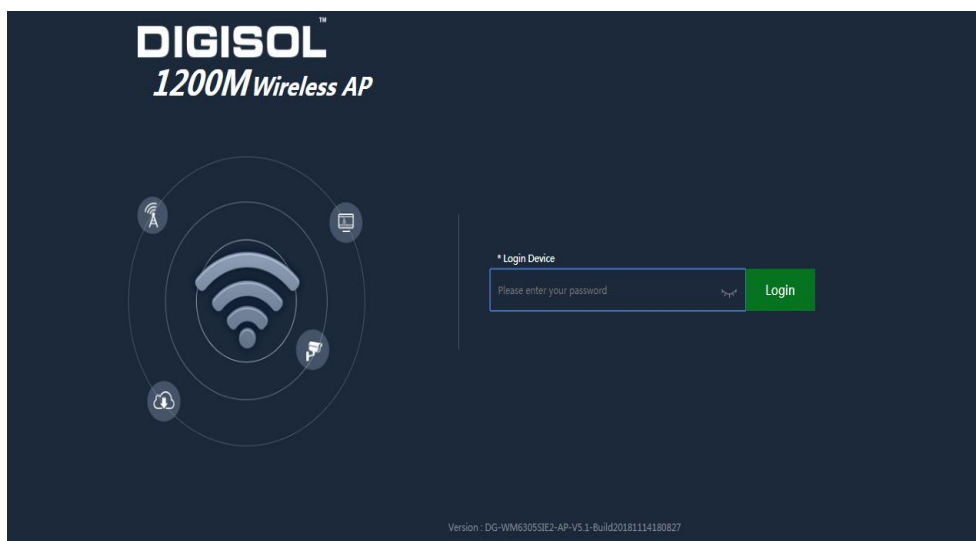


P5



P6

3. Input 192.168.1.200 into browser, login page will appear, the default login password: admin.



**P7: Login Page**

## 4. WEB GUI interface Setting

### 4.1. Home

After login, the Device Status and home page will be showed

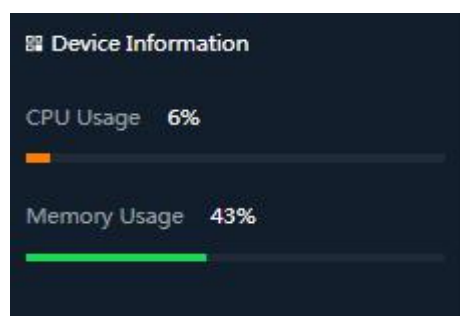


**P8: Home**

This page will show the device default operation mode, Device Information, Device Description, LAN Information, 2G WiFi, Flow (2G WiFi) bps and Hardware/Firmware version.

In this wireless AP, the default operation mode is AP mode.

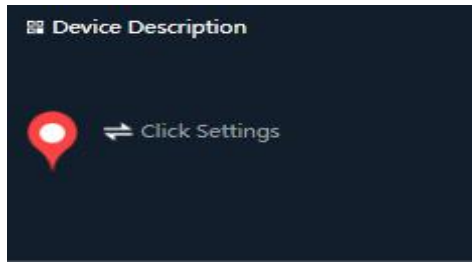
In Device Information you can find the CPU and Memory Usage of the AP as shown in **P9**



**P9: Device Information**

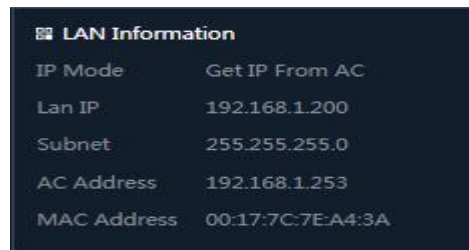
In Device Description you can add the APs description by clicking on Click Settings as shown in

**P10**



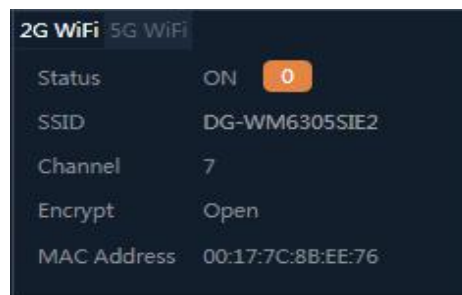
### P10: Device Description

In LAN Information you can find the IP Mode, IP and MAC Address of the AP as shown in **P11**



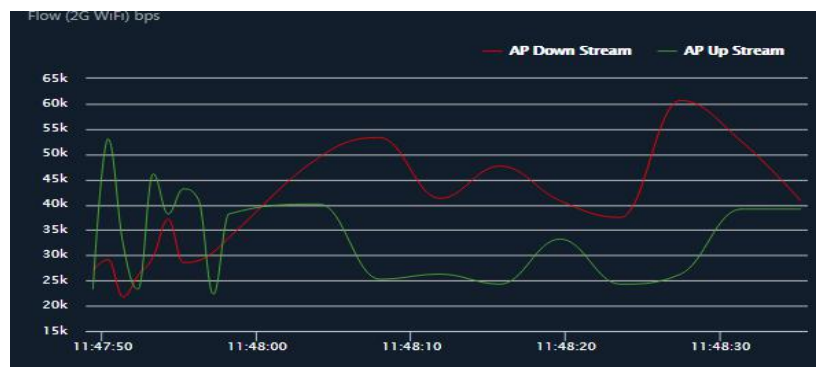
### P11: Lan Information

In WiFi Information you can find the Status, SSID, Channel, Encryption and MAC Address of AP as shown in **P12**



### P12: WiFi Information

In Flow (2G Wifi) bps you can find the AP's Upstream and Downstream as shown in **P13**



### P13: Flow (2G Wifi) bps

## 4.2. Wizard Configuration

Wizard: It instruct users to configure wireless AP's operation mode based on needs, there are four operation mode including Gateway, Repeater, WISP, Wireless AP. Please confirm the operation mode first before starting the configuration.

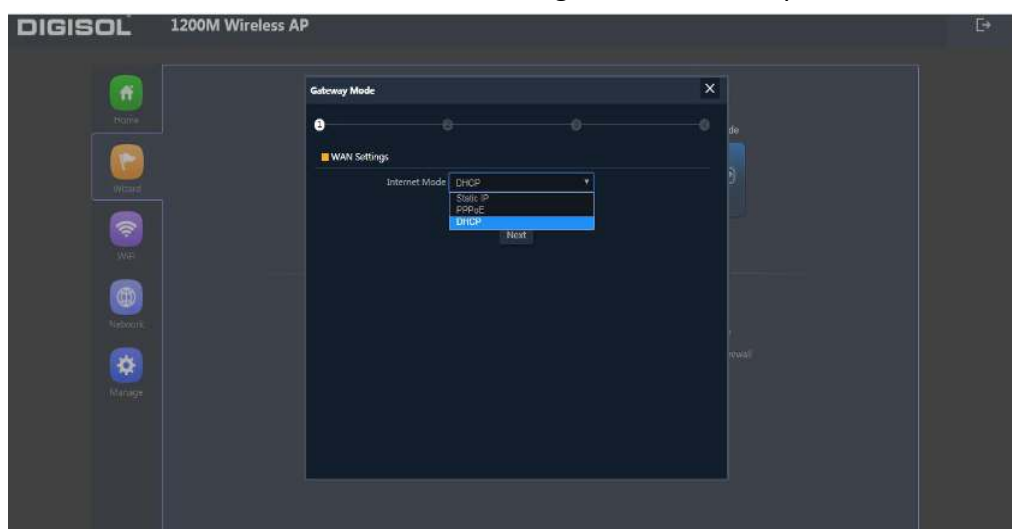
Clicking Wizard in Status page will pop up following page to configure the operation mode and there are explanation for each operation mode for better application.



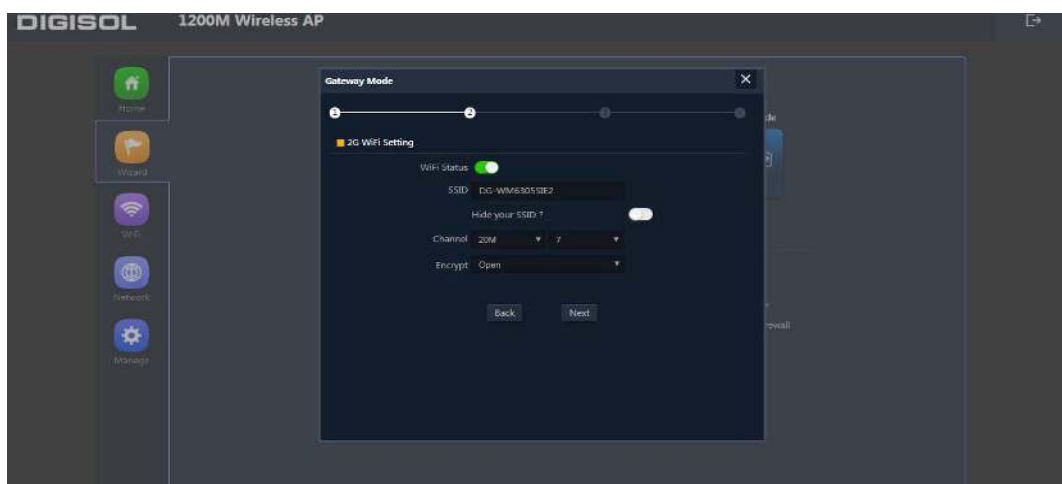
**P14: Wizard Configuration**

### 4.2.1 Gateway Mode

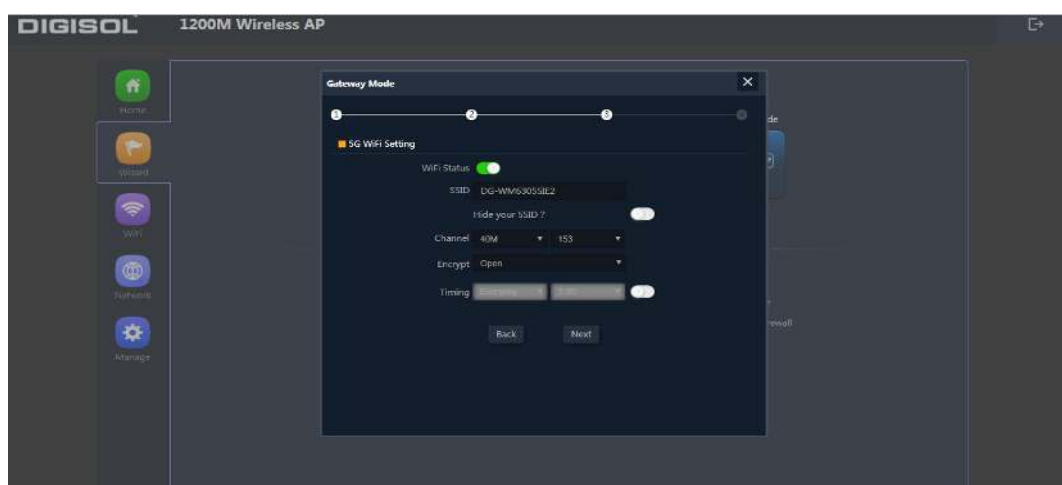
Before Clicking the Gateway mode, confirm your internet will be Static IP, PPPoE, or DHCP. Then clicking on the Gateway mode will pop up the below image. Please choose the right WAN setting mode, then click next to continue. Then configure the wireless parameters and click next.



**P15: WAN setting in Gateway Mode**



**P16: 2G Wireless setting in Gateway mode**



**P17: 5G Wireless setting in Gateway mode**

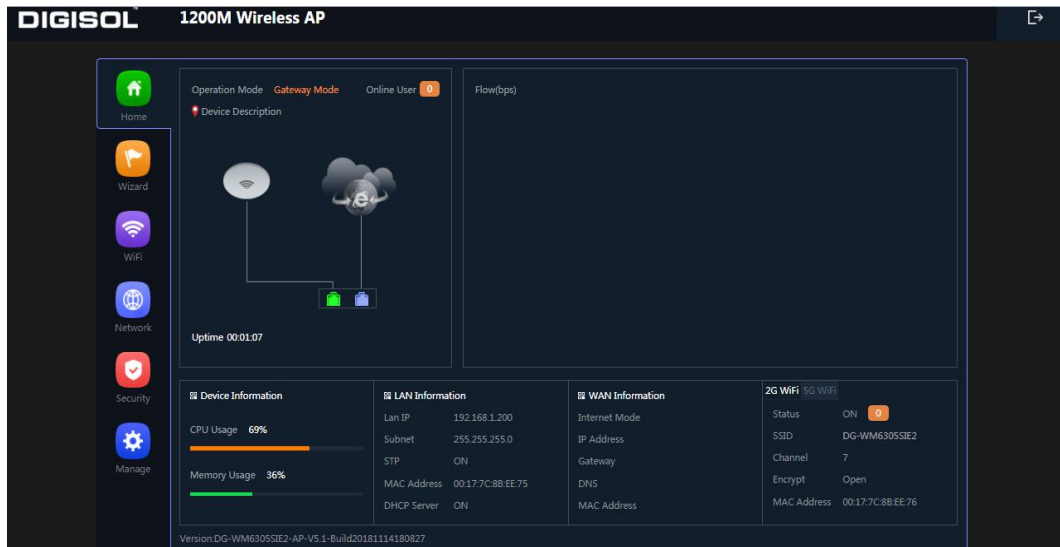
Clicking next will complete the Gateway mode setting and show following picture:

**Please Note:** The equipment will restart for the changes to take effect.



**P18: Settings complete in Gateway mode**

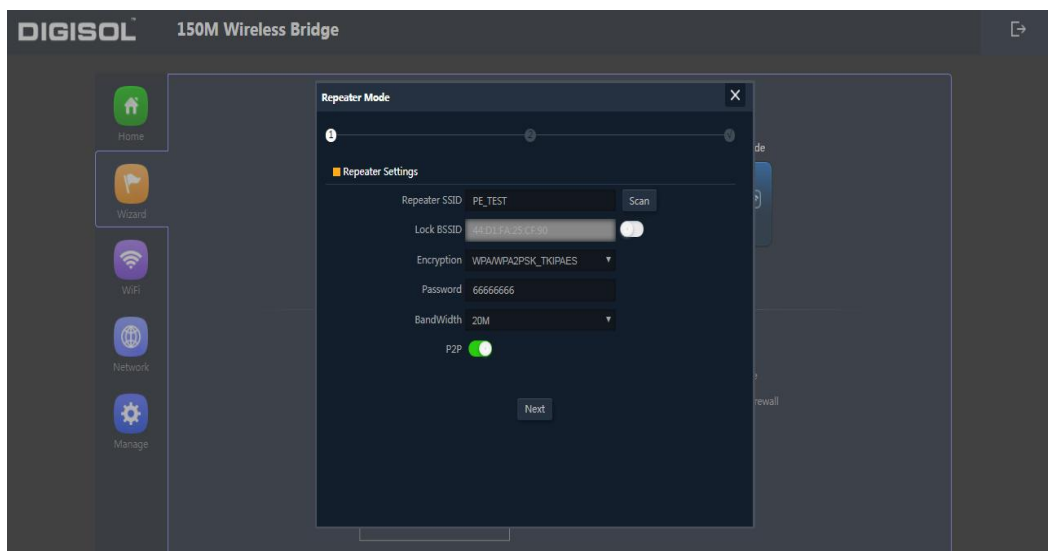
When return to Home page, will show Wireless router's SSID, Internet connection, LAN connection status shown as below.



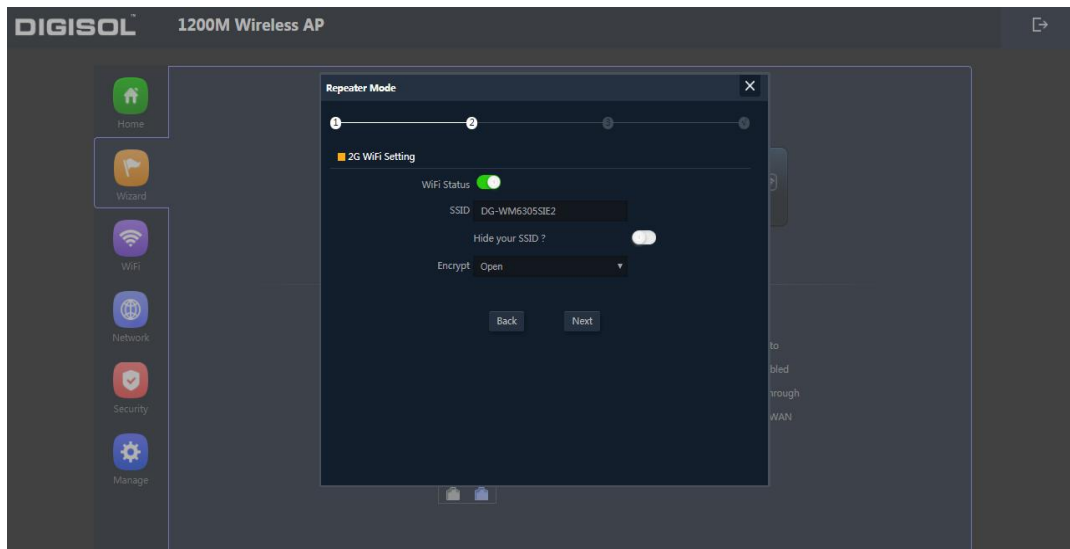
**P19: Status in Gateway mode**

#### 4.2.2. WiFi Repeater mode

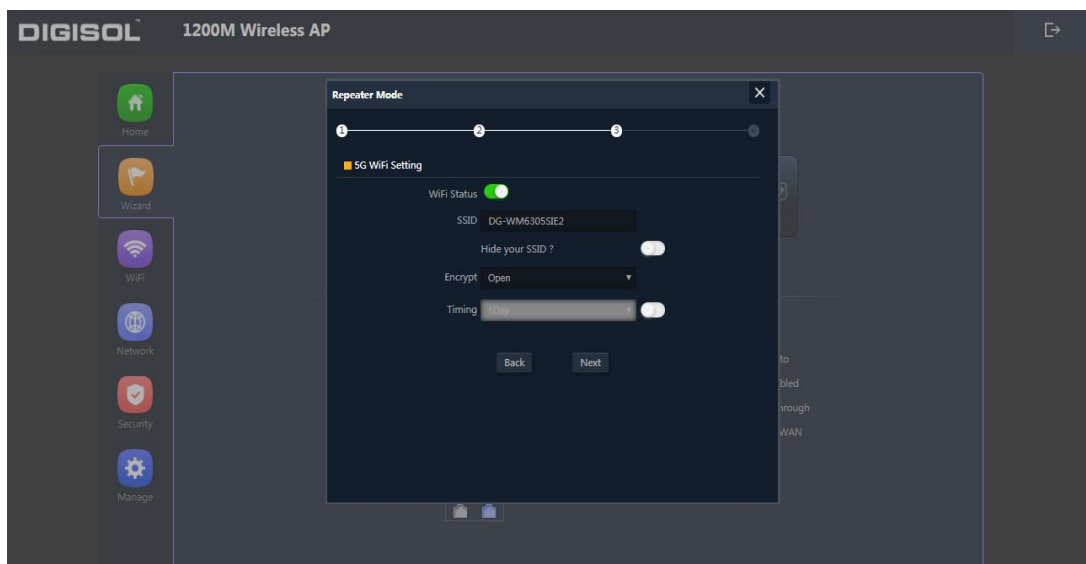
1. Login the Web management page, click "Wizard" then "WiFi Repeater"
2. Scan AP and select the AP's SSID want to bridge then input the AP's key, click next to complete.



**P20: Repeater mode**



**P21: 2G Wireless Setting in Repeater mode**



**P22: 5G Wireless Setting in Repeater mode**

Clicking next will complete the Gateway mode setting and show following picture:

**Please Note:** The equipment will restart for the changes to take effect.

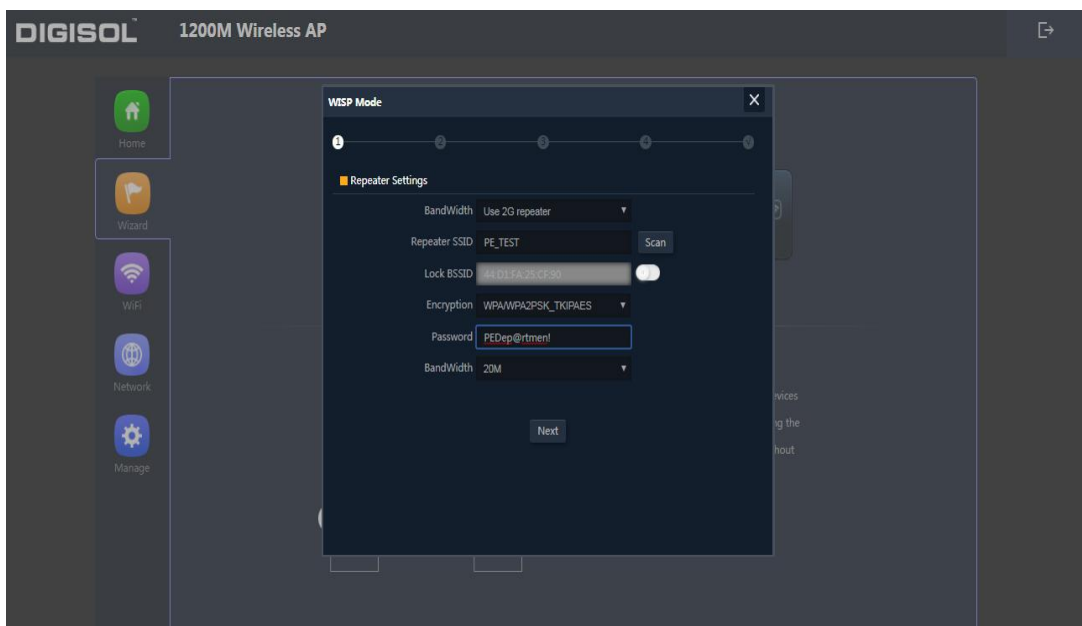
When return to Home page, it shows Repeater mode data, will show fail or success, and user can configure this data if required.



**P23: Status in Repeater mode**

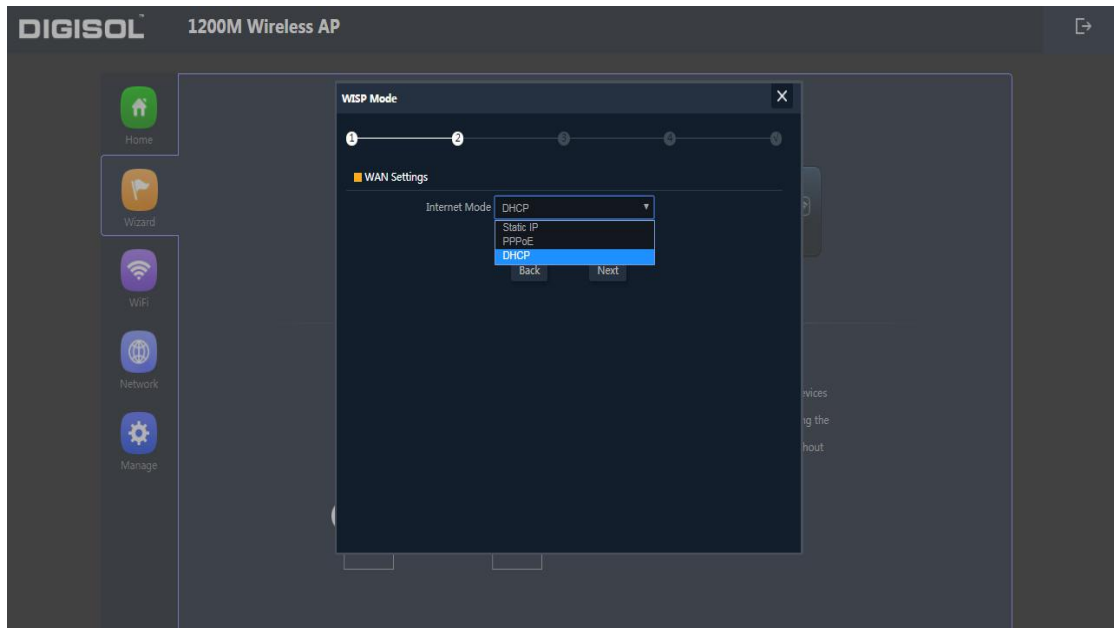
#### 4.2.3. WISP Operation mode

Click WISP operation mode in Wizard, then will pop up the configure page, please set the WISP operation mode based on the steps shown in picture:



**P24: WISP Mode**

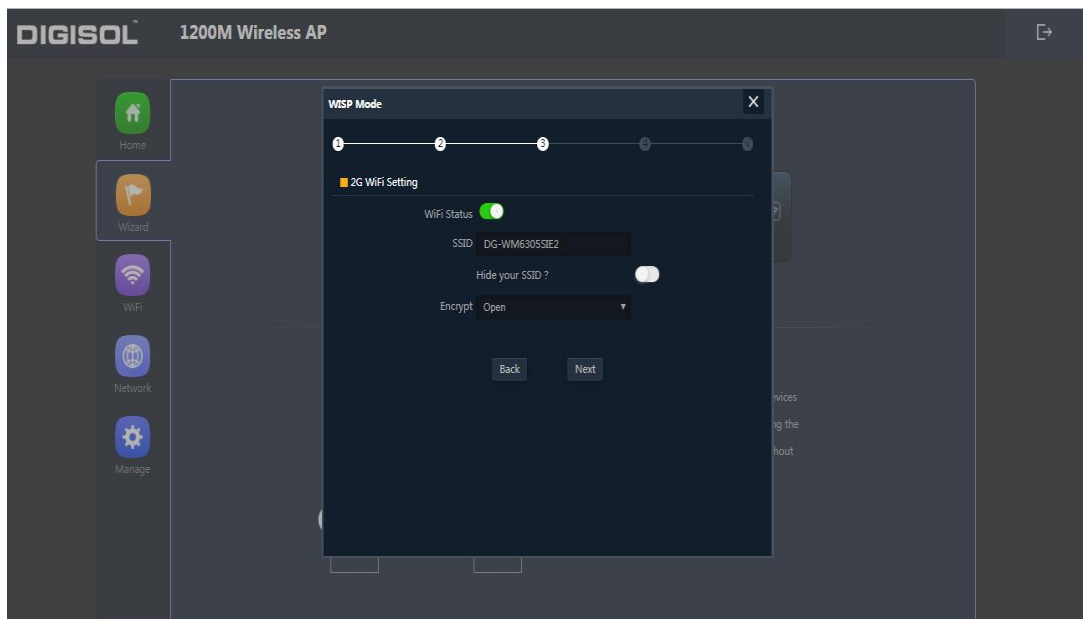
Select the appropriate wireless AP and configure the correct WAN setting in WISP operation mode, then next to complete.



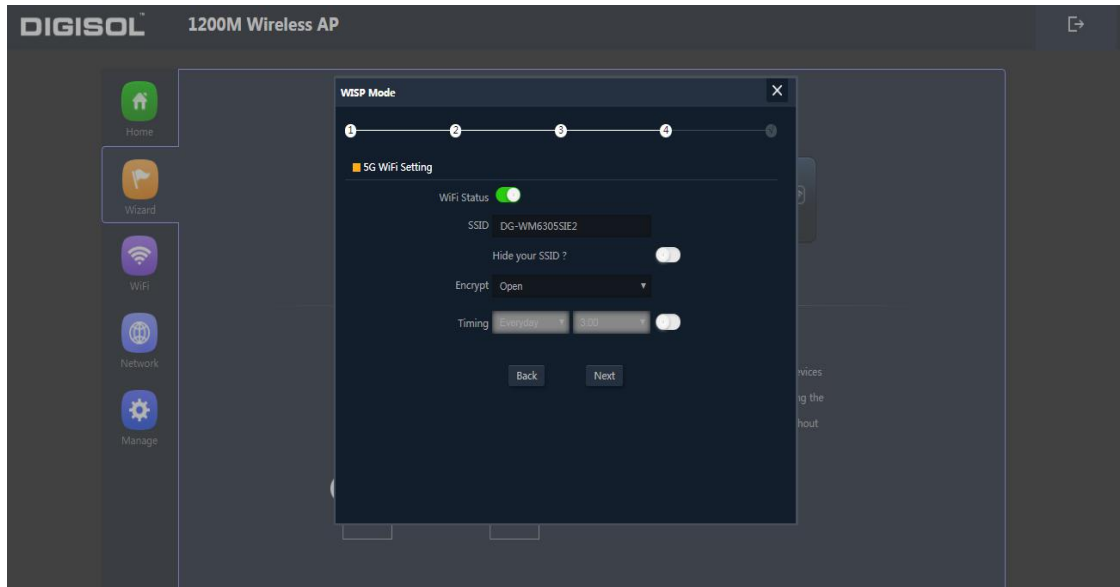
**P25: WAN setting in WISP mode**

In next step configure the SSID then complete and back to home, will show the connection fail or success, where you can configure the data based on request:

**Please Note:** The equipment will restart for the changes to take effect.



**P26: 2G Wireless setting in WISP mode**



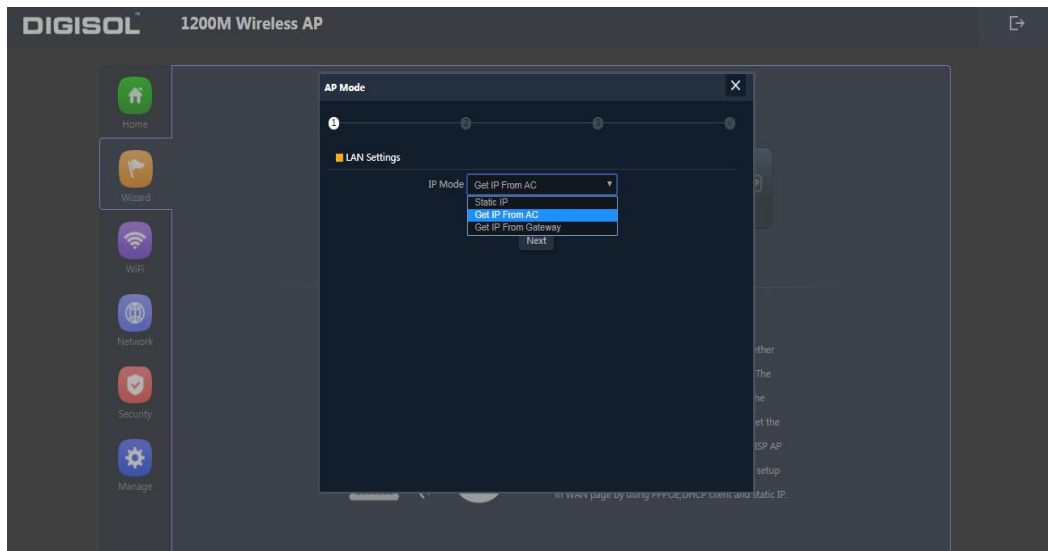
P27: 5G Wireless setting in WISP mode



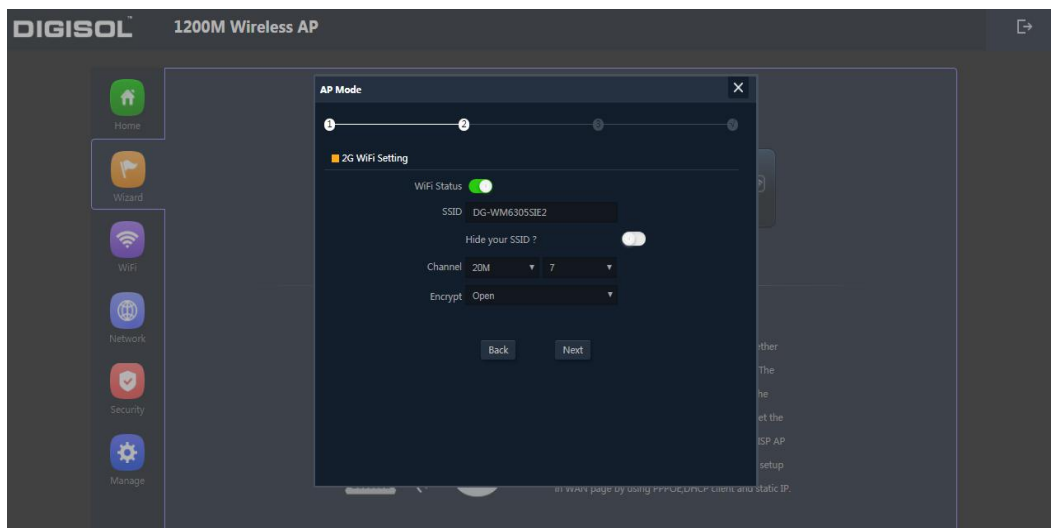
P28: Status in WISP mode

#### 4.2.4. AP Operation mode

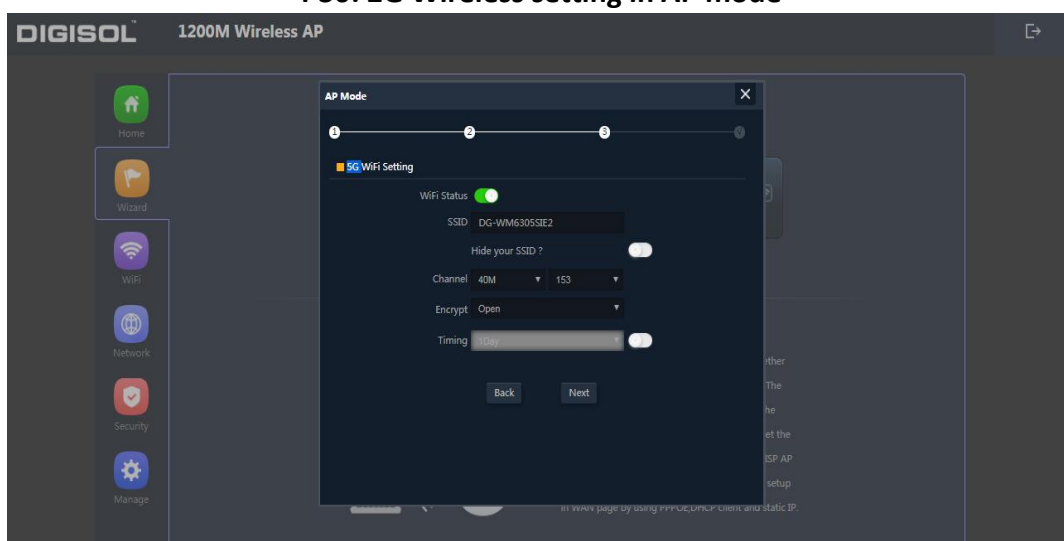
Configure the LAN setting and in the next tab set the wireless SSID, follow the screenshot below:



**P29: LAN setting in AP mode**



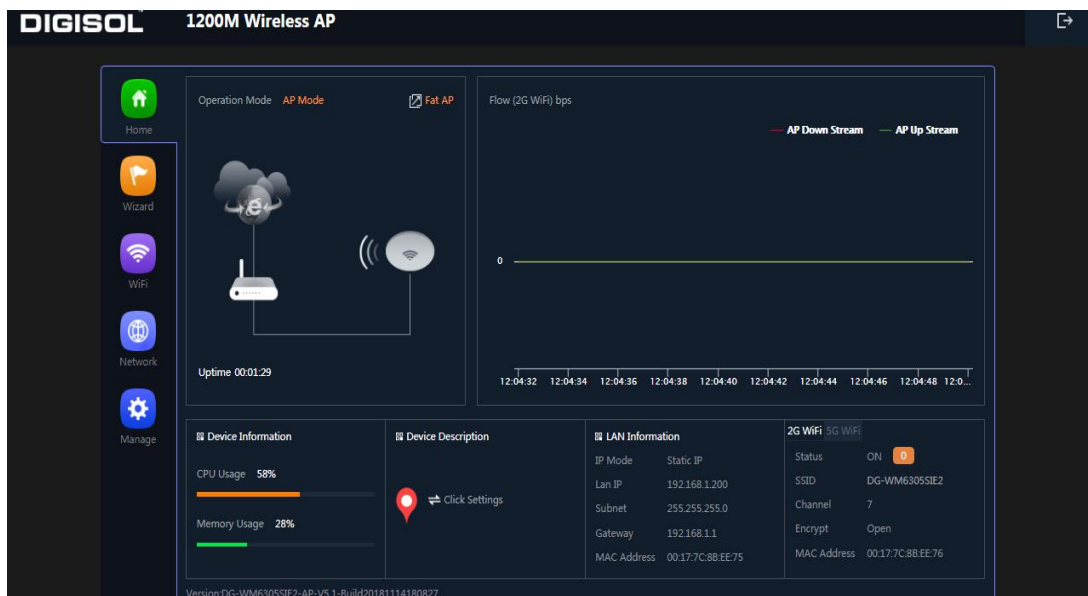
**P30: 2G Wireless setting in AP mode**



**P31: 5G Wireless setting in AP mode**

Clicking next will complete the AP mode setting and show following picture:

**Please Note:** The equipment will restart for the changes to take effect.



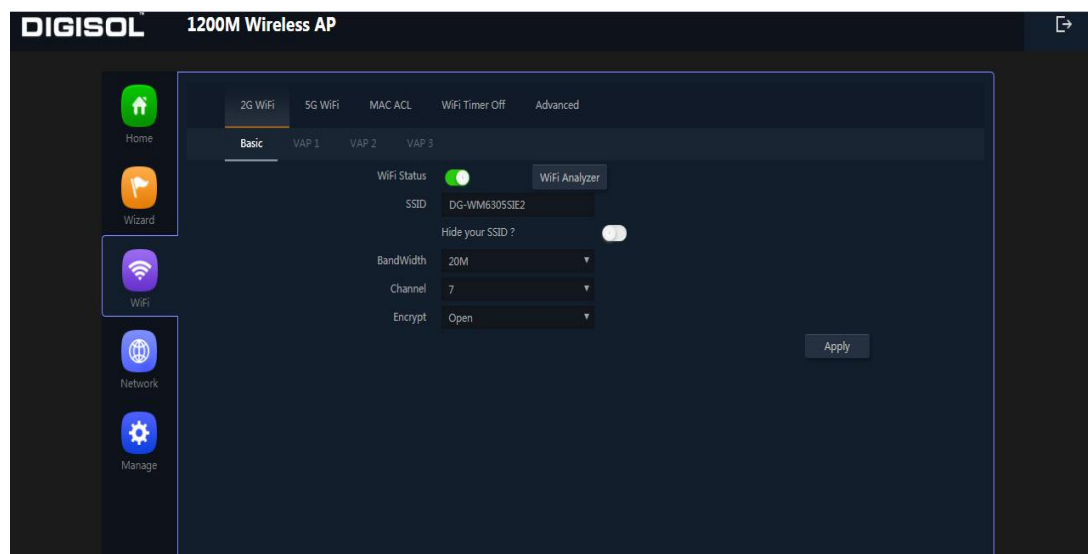
**P32: Status in AP mode**

## 4.3. WiFi Setting

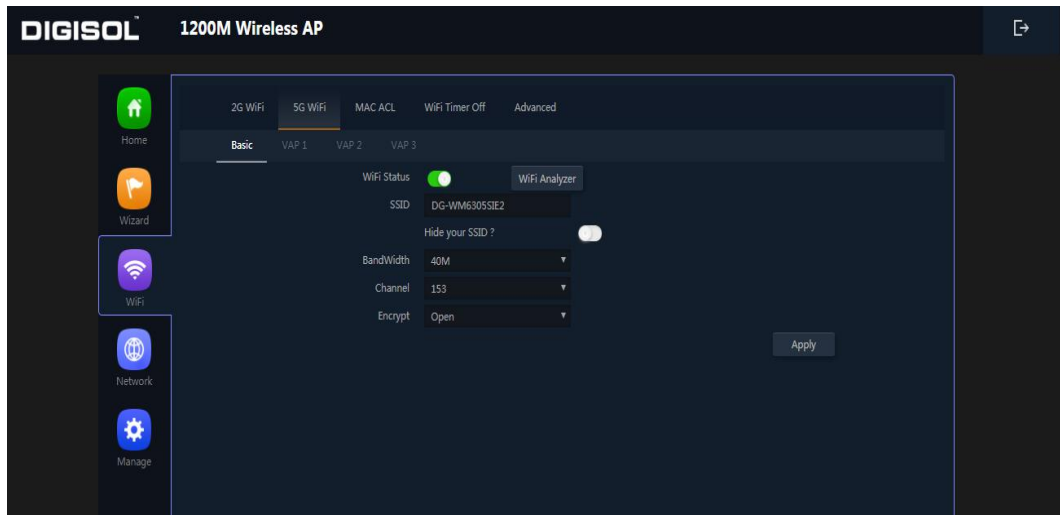
In WiFi setting you can set the 2.4G and 5G SSID, MAC ACL, Wifi Timer off and Advanced settings. Let's see more in detail in the following pages:

### 2G Wifi

In this part, will show the 2.4G Basic Setting and Virtual AP setting as shown below



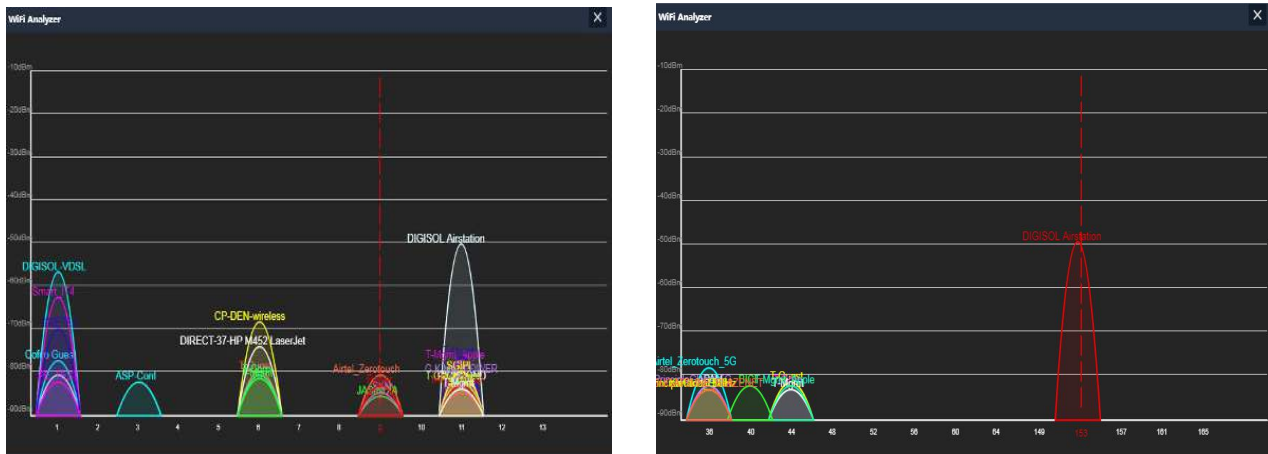
**P33: 2G WiFi setting**



**P34: 5G WiFi setting**

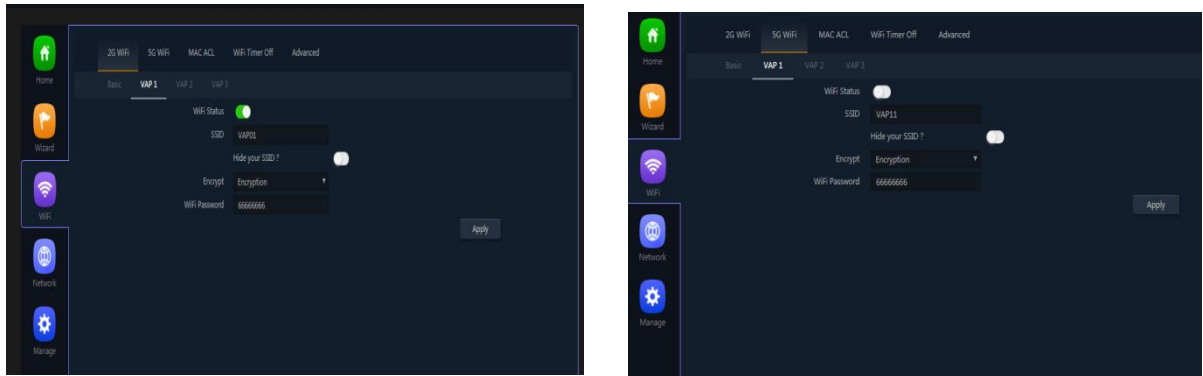
**WiFi Status:** On mean SSID on, Off mean SSID off.

**WiFi Analyzer:** Mainly to analyze the AP's signal strength and channel, to make user more easy to choose the channel with less wireless AP and to avoid the Wireless Interference.



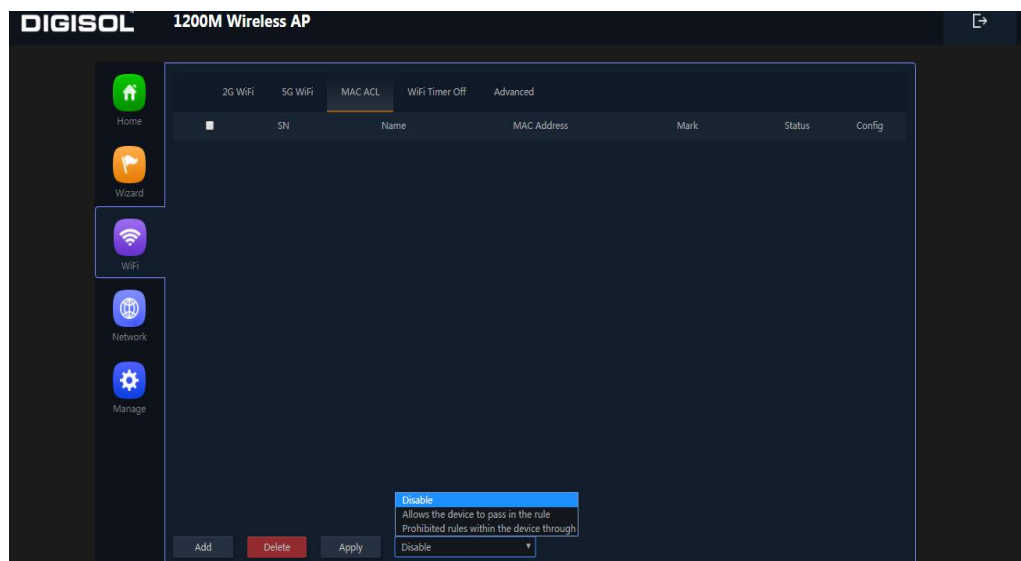
**P35: WiFi Analyzer**

**Virtual AP:** There are 3 virtual AP in 2.4G and in 5G wireless, for use of multi SSID, then users can configure it as shown in following picture.



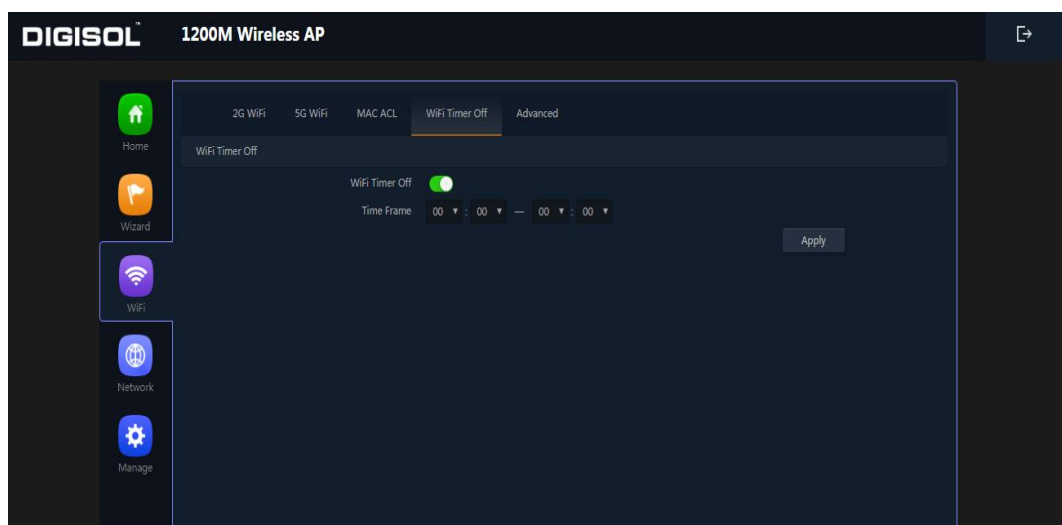
**P36: Virtual AP Setting**

**MAC ACL:** Allow or deny the users access into this device based on MAC address.



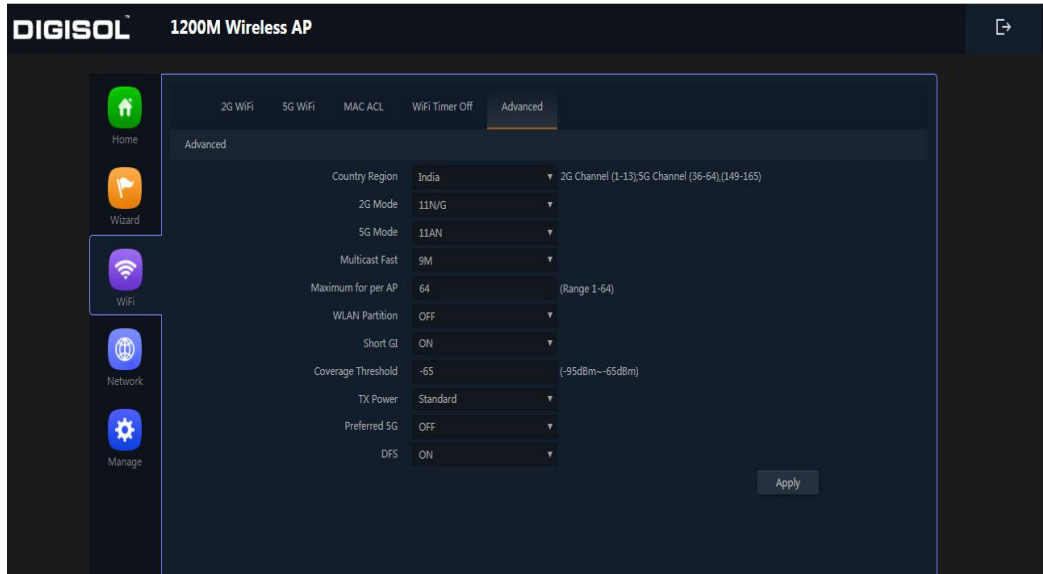
**P37: MAC ACL Setting**

**WiFi Timer Off:** Enable WiFi Timer Off to turn off the SSID in the specified time.



**P38: WiFi Timer Off**

**Advanced:** This page, will show the regional info, mode, RF Power, Max user access, etc.

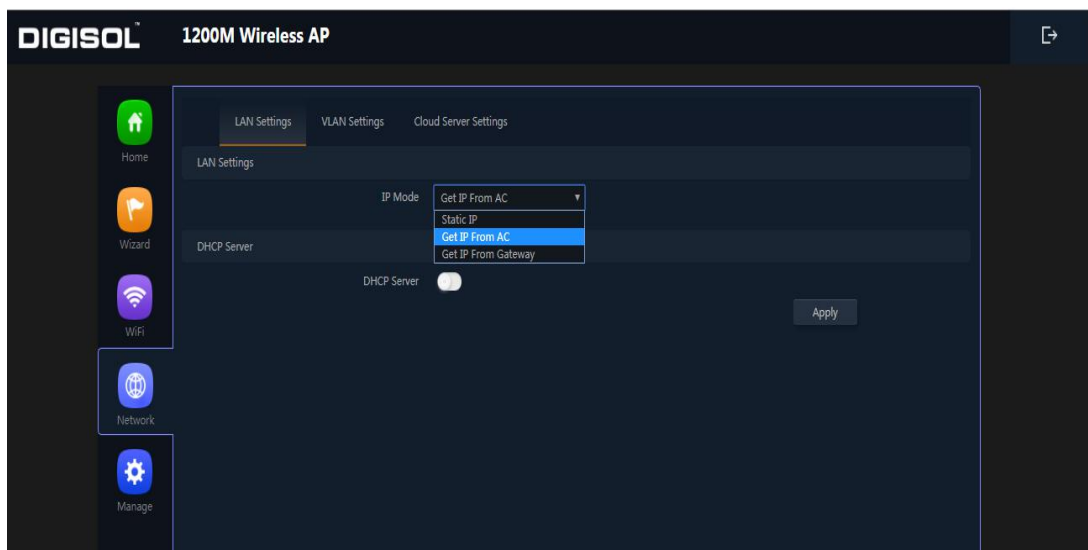


**P39: Advanced Setting**

## 4.4. Network

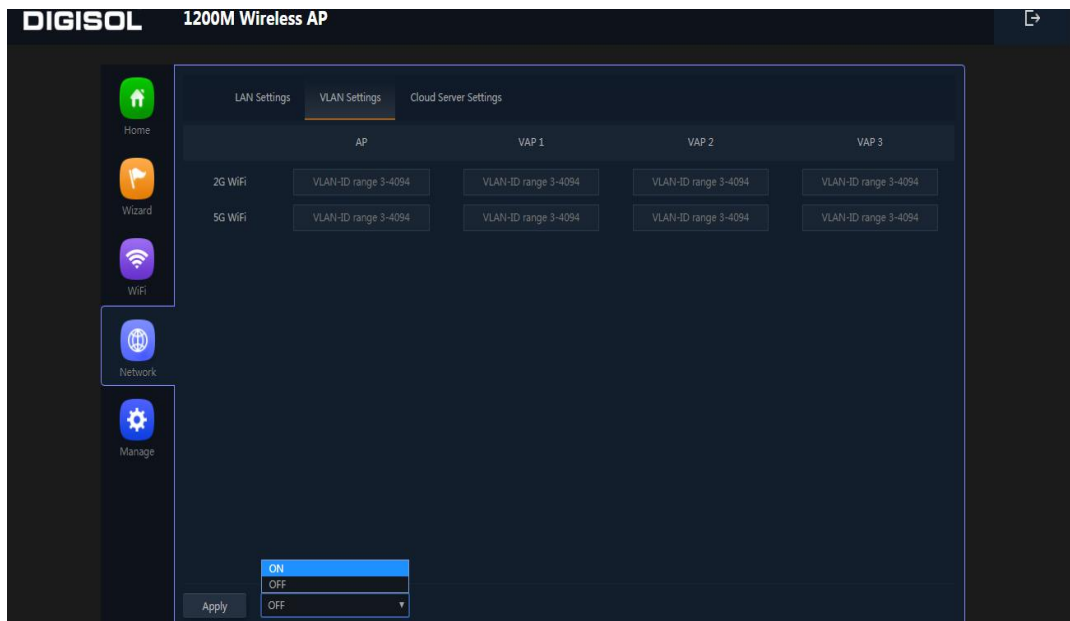
In network, you can configure LAN setting, tag VLAN and setup Cloud Server as follow:

LAN Settings mainly includes Static IP, Get IP from AC and Get IP from Gateway.



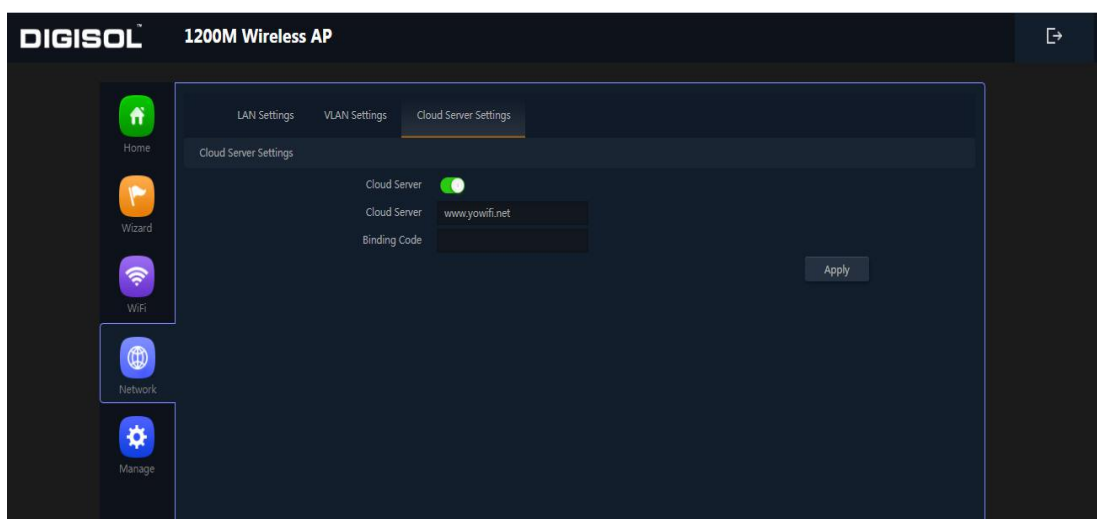
**P40: LAN Setting**

In VLAN part, you need a VLAN switch and make sure the multi SSID is enable, then input the VLAN ID to different SSID.



**P41: VLAN Setting**

In Cloud Server Setting you need to enter the Cloud Server URL and Binding code so that the AP can be managed over the Cloud.

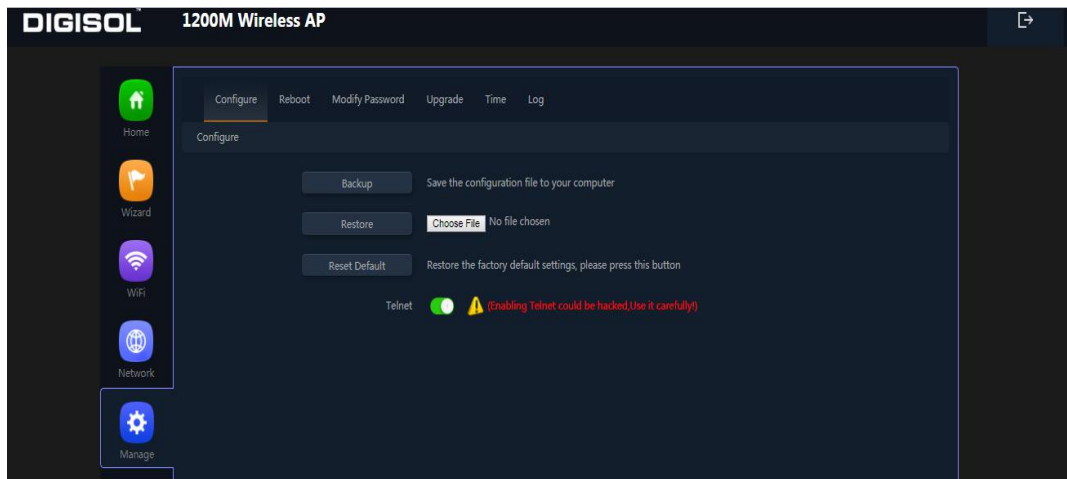


**P42: Cloud Server Settings**

## 4.5. Manage

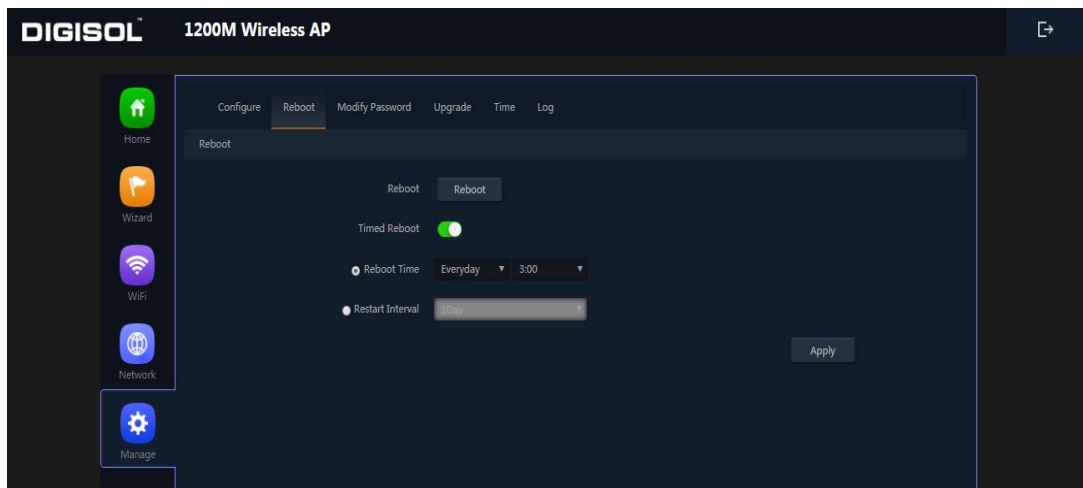
It shows the Configure part, Reboot part, Modify password, System time, Logs, Upgrade firmware.

**Configure:-** You can save the config or restore the previously saved config or reset the device to its default config and enable Telnet.



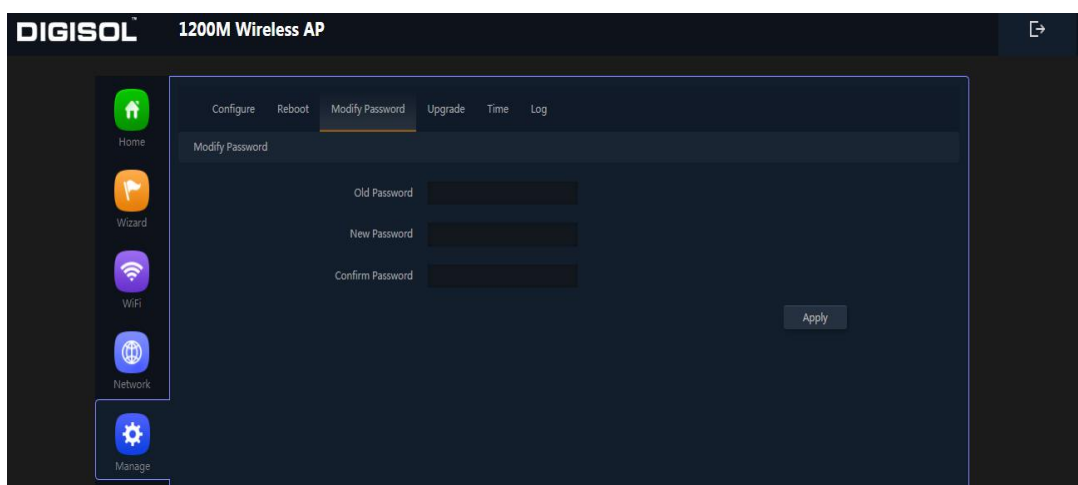
### P43: Configure

**Reboot:** Can reboot/restart the AP on a schedule.



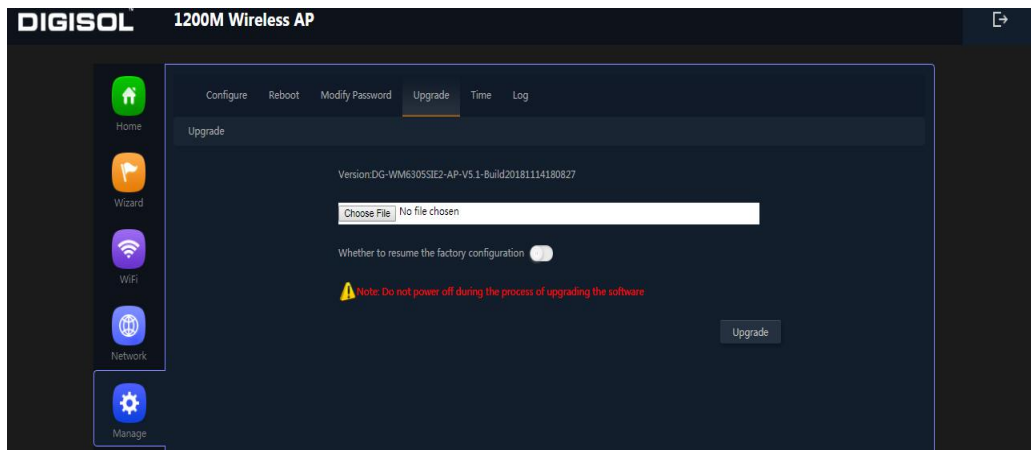
### P44: Reboot

**Modify Password:** Can modify the password. Default password is admin.



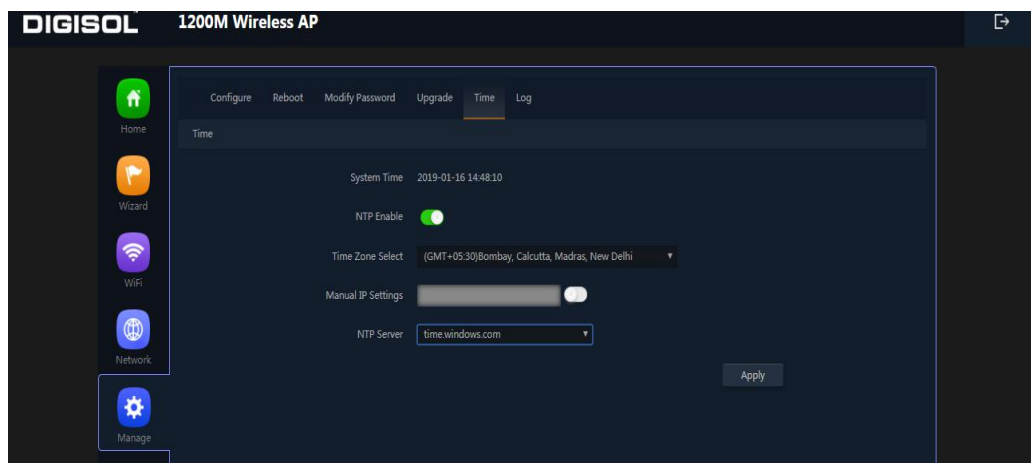
### P45: Modify Password

**Upgrade:** Browse the firmware file and click on upgrade. Wait till the upgrade is successful. The device will reboot automatically after successful firmware upgrade.



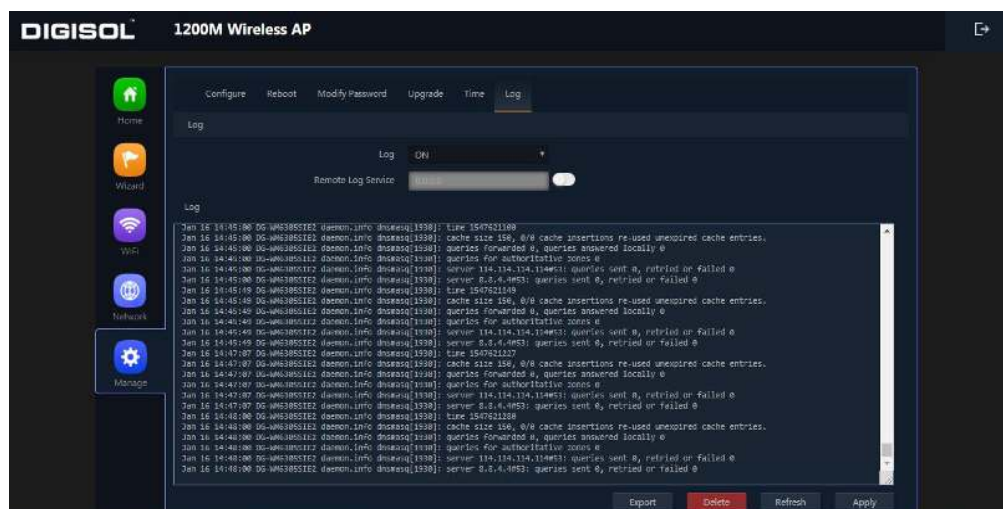
### P46: Firmware Upgrade

**Time:** Here you can check the system time, enable NTP Server and select the Time Zone.



### P47: Time

**Log:** Here you can find the AP's log, you can also enable Remote Log Service.

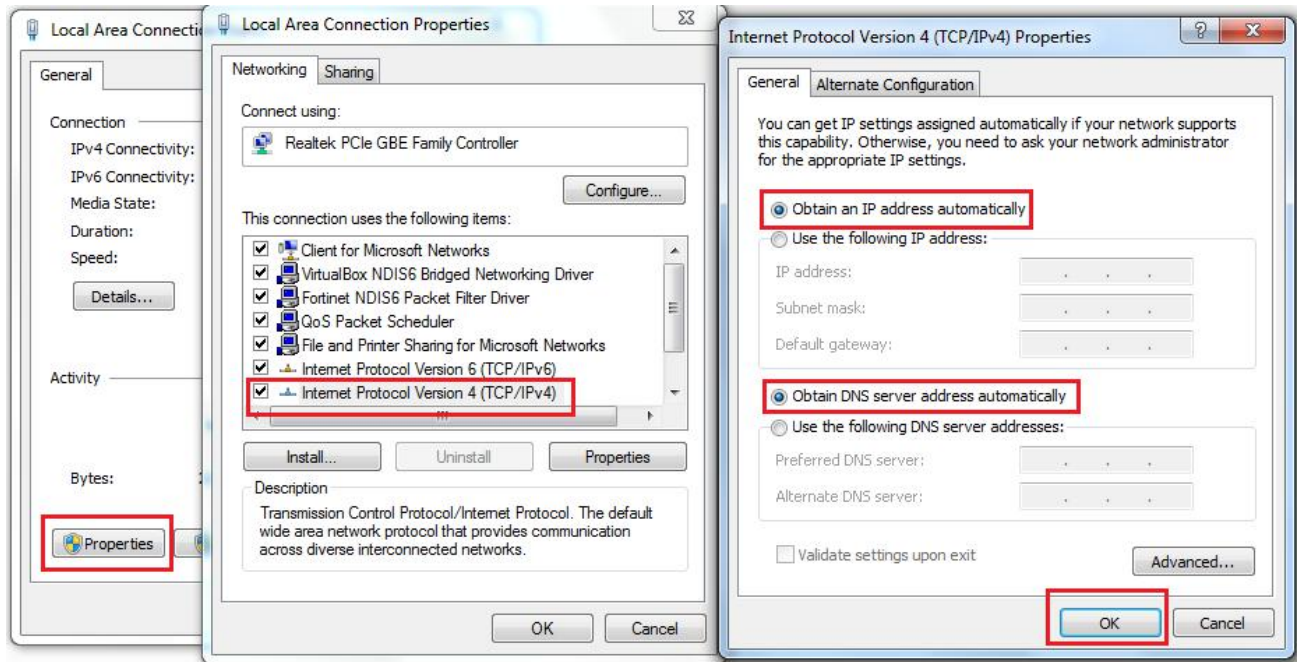


### P48: Log

## 5. Share Internet and Obtain IP address automatically

Set computer's TCP/IP as Obtain an IP address automatically, Obtain DNS server address automatically as following picture showed.

The computer will obtain the IP address from router or base station to get Internet.



P49

# Troubleshooting

The Failure phenomenon and solution.

If the problems are not listed, please contact the local service or call the Toll Free service. We are willing to offer the service.

Failure phenomenon	Solution
SYS Indicator off	Pls make sure the PoE module connection is right. POE Port connect with AP, LAN port connect with computer
Can't land to Wireless AP through Web page	Pls check the IP address of computer and Wireless AP to see whether they are in same networking segment, The method is click "start"- "Run" input "cmd" , ping 192.168.1.200 to test the Wireless AP connectivity. Reset Wireless AP and load it again; Pls make sure the IP address 192.168.1.200 is not occupied by other device in Wireless AP's networking; Check computer and cable problem, recommend to use 10/100M UTP unshielded cable; Clean up Arp binding from "Start"- "Run" input "cmd" arp -d Clean the IE Brower's temporary files and Cache file。
Wireless AP can't connect with AP (the status display unconnected )	Try to scan the available wireless networking again; Make sure the Wireless AP's wireless standard is correct; (2.4Ghz signal should connect 2.4Ghz, 5.8Ghz signal should connect 5.8Ghz signal; ) The Security and passwords are matched between Wireless AP and AP. The signal strength of AP is too weak to connect, should be more than -75dBm;
Can't scan the wireless AP	Scan it several times more; If using 5Ghz to scan, please make sure there are 5G signal existed. Reset the Wireless AP, scan it again after Wireless AP restart;
The connection of Wireless AP and AP is success, but the computer can't share internet	Pls Check the computer's IP address and DNS setting. If it is dynamic, set the network card as automatically obtain. If it is static IP, pls contact with ISP for correct IP address and DNS address.
How to Reset Wireless AP	Press the "Reset" button more than 15 seconds after power on. The Wireless AP will restore factory default after the Wireless AP restart.

This product comes with three Years warranty. For further details about warranty policy and product registration, please visit support section of [www.digisol.com](http://www.digisol.com)



## Limited Lifetime Warranty

This Product is covered under DIGICARE Limited Lifetime Warranty program backed by DIGICARE Service Center. To avail this Limited Lifetime Warranty offer, customer needs to contact DIGICARE's Technical Assistance Center for the same. You may be asked to provide proof of purchase of product for warranty claim of defective product. Please refer website [www.digisol.com](http://www.digisol.com) for the detailed support terms & conditions and support process.

### Warranty Policy

1. **Hardware Warranty :** Hardware warranty period shall be limited up to Three years. External Power Adapter shall carry One year warranty only against manufacturing defects. Any repair or replacement will be rendered by DIGICARE at its Service Center only.
2. **Software Warranty :** DIGISOL issues this Limited Software Warranty that the software portion of the product ("Software") will substantially confirm to DIGISOL's then current functional specifications for the software, as set forth in the applicable documentation, from the date of original retail purchase of the Software for a period of one year ("Software Warranty period"), provided that the Software is properly installed on approved hardware and operated as contemplated in its documentation.
3. **Governing Law:** This warranty shall be governed by Indian Laws.
4. **Limited Lifetime Warranty** shall subject to the terms & conditions specified in the DIGISOL PRODUCT WARRANTY policy displayed on [www.digisol.com](http://www.digisol.com)
5. To avail and activate warranty for your product.  
Kindly register your product by calling us @18002093444



helpdesk@digisol.com  
1800 209 3444

