



## Quick Installation Guide

### **RANGER SERIES**

# **AC 1200 Dual Band Wireless 11AC USB Adapter**

DG-WN3860AC



UP TO 860 Mbps

## **Copyright**

Copyright 2016 by Smartlink Network Systems Ltd. All rights reserved. No part of this publication may be reproduced, transmitted, transcribed, stored in a retrieval system, or translated into any language or computer language, in any form or by any means, electronic, mechanical, magnetic, optical, chemical, manual or otherwise, without the prior written permission of this company.

## **Trademarks:**

DIGISOL™ is a trademark of Smartlink Network Systems Ltd. All other trademarks are the property of the respective manufacturers.

## Package Contents

The following items should be present in your package:

- DG-WN3860AC 802.11b/g/n/a/ac Wireless USB Adapter (1 No.)
- Quick installation guide
- Installation Guide CD (Includes User Manual, QIG & Driver/Utility)

Make sure that the package contains above items. If any of the listed items is damaged or missing, please contact your retailer immediately.

## Product Overview

Thank you for purchasing DG-WN3860AC wireless 802.11b/g/n/a/ac USB adapter! Besides the common wireless standards 802.11b/g/n, this wireless adapter is also 802.11ac compatible. The data transfer rate is 300/860Mbps, and that's three times faster than 802.11g wireless network! DG-WN3860AC Wireless USB adapter can achieve wireless data transmission rate up to 860Mbps in 5GHz spectrum. Its dual band operation offers flexible wireless connectivity which enhances sharing of files, photos, audio, video and gaming experience over wireless network.

## Product Features

- Complies with IEEE802.11ac, IEEE802.11a, IEEE802.11n, IEEE802.11g and IEEE802.11b standards.
- Supports USB 3.0 port.
- Provides 300/860Mbps receiving rate & 150/433Mbps sending rate
- Supports 64/128-bit WEP, WPA, WPA2 with IEEE 802.1x functions for high level of security.
- Supports the operating system: Vista/Win7/Win8/Linux/MAC.
- Portable and tiny size design.

## System requirements

The following system requirements are recommended.

- An empty USB 3.0 port
- Windows 7, Windows 8 or Windows 10 operating system
- CD-ROM drive
- At least 100MB of available disk space

## Product View

Below shown is the product view indicating the USB interface and Link/Activity LED (under the case).



**Top View**



**Bottom View**

After installing the wireless adapter, users can verify its status from the LED indicators as shown below.

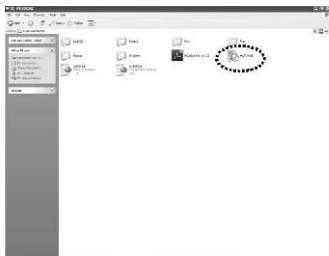
LED Name	Light Status	Description
Status	Off	Wireless Radio is switched OFF.
	On	Steady light 5 seconds means WPS connection is established successfully.
	Blinking	i) Wireless network adapter is normally installed. ii) Linked to a wireless access point. iii) Transferring or receiving data. Fast Blinking three times per second means WPS is activated. The USB adapter will wait for 2 minutes to establish WPS connection.

## Driver Installation

Please follow the instructions mentioned below to install your new wireless USB adapter:

Note: It is recommended to uninstall other Realtek drivers/utility if any, before installing DG-WN3860AC drivers/utility. If not, you may encounter some problems. If you have installed the Wireless PC Adapter driver & utility before, please uninstall the previous version first.

- 1 Insert "Installation Software CD" into the CD/DVD ROM drive of your computer. 'AUTORUN' program will run automatically.



- 2 Click 'Drivers & Utility' to begin with the driver and utility installation. The following screen appears. Click on "Next".



- 3 Click 'Finish' to reboot your computer to complete the installation procedure. If you don't want to reboot the computer now, select 'No, I'll restart my computer later' option and click 'Finish'. Please note you have to reboot your computer before you can use your new wireless USB adapter.



- ④ Once computer has restarted, insert the wireless USB adapter into an empty USB 3.0 port. Never use force to insert the adapter, if you feel it's stuck, flip it over and try again.
- ⑤ A new icon will appear near the clock of system tray:



**HERE!**

Left-click the icon and it will launch the wireless network configuration utility, and you can right-click the icon to Hide or Quit the configuration utility.

The different color & logo indicates the different wireless connection status:



Wireless USB adapter not detected



No connection with access point is established.



Connection with access point has been established.

For detailed instructions of wireless network configuration utility, please refer to the user manual.

## Connecting to a wireless access point

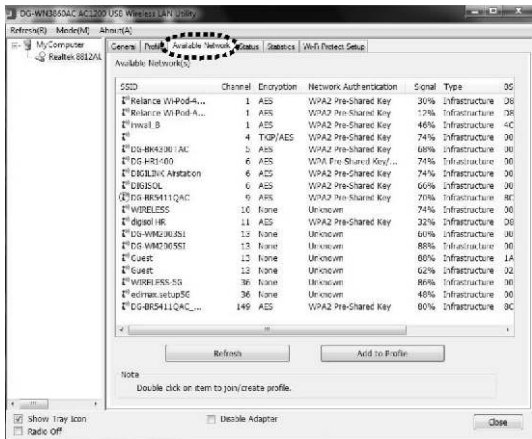
Please follow the instructions mentioned below to use DIGISOL configuration utility to connect to wireless access point.

1. Left-click the DIGISOL configuration utility icon located at lower-right corner of computer desktop, and configuration menu will appear:

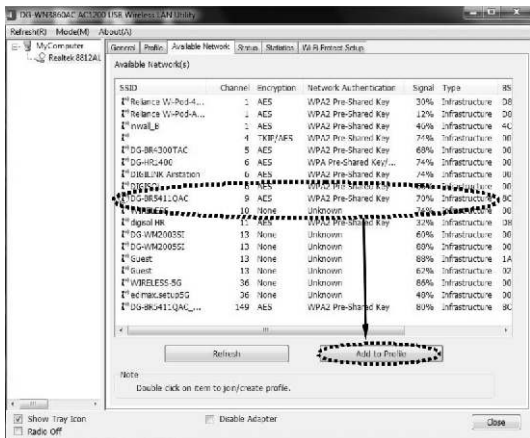


**HERE!**

2. Wireless utility will appear. Click 'Available Network' menu to search for wireless access points nearby.



3. Please wait for a while, and all wireless access points which can be reached by this wireless network adapter will be displayed here.

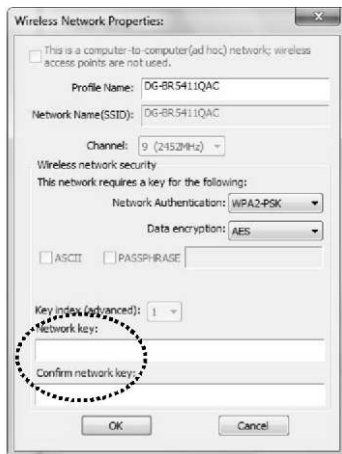


If the wireless access point you wish to connect does not appear here, you can click 'Refresh' button to scan for wireless access points again; if the wireless access point you're looking for still does not appear, try to move the computer closer.

When the access point you're looking for is on the list, left-click it and then double click it or click 'Add to Profile'.

4.If a password is required to access the wireless access point, please input it in the 'Network key' (and input it again in 'Confirm network key' for confirmation). Click 'OK' when the password is properly inputted.

NOTE: Network security type ('Network Authentication' and 'Data encryption') will be selected automatically based on wireless access point's security setting. It's not required to change these settings yourself.



The image shows a 'Wireless Network Properties' dialog box. It has a title bar with a close button. Inside, there is a checkbox for 'This is a computer-to-computer(ad hoc) network; wireless access points are not used.' Below this are fields for 'Profile Name' and 'Network Name(SSID)', both containing 'DG-BR5411QAC'. A 'Channel' dropdown is set to '9 (2452MHz)'. Under 'Wireless network security', it states 'This network requires a key for the following:'. Below this are two dropdowns: 'Network Authentication' set to 'WPA2-PSK' and 'Data encryption' set to 'AES'. There are checkboxes for 'ASCII' and 'PASSPHRASE', with the latter being selected. Below these is a 'Key index (advanced):' dropdown set to '1'. The 'Network key:' and 'Confirm network key:' fields are circled with a dashed line. At the bottom are 'OK' and 'Cancel' buttons.

Wireless Network Properties:

☐ This is a computer-to-computer(ad hoc) network; wireless access points are not used.

Profile Name: DG-BR5411QAC

Network Name(SSID): DG-BR5411QAC

Channel: 9 (2452MHz)

Wireless network security

This network requires a key for the following:

Network Authentication: WPA2-PSK

Data encryption: AES

☐ ASCII ☒ PASSPHRASE

Key index (advanced): 1

Network key:

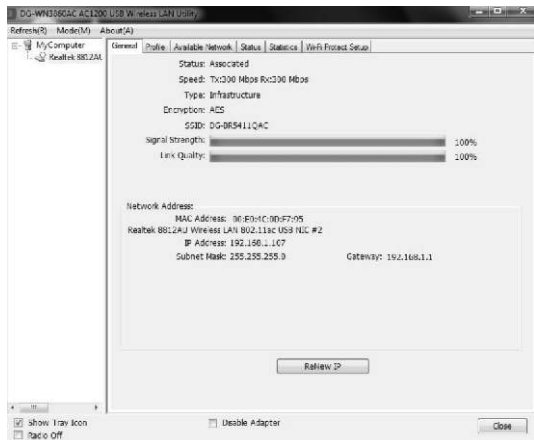
Confirm network key:

OK Cancel

Please click 'OK'

5. Network adapter will attempt to connect to access point now, this may require few seconds to minutes, please be patient. When the 'Status' becomes 'Associated', your computer is connected to access point you selected. Click 'Close' to close configuration menu.

NOTE: If you are connected to an access point but the connection has dropped soon, please check security settings and re-check password spelling.



Now the wireless adapter will be connected to the Access Point and the users can access their LAN resources.



## Life Time Warranty

This Product is covered under DIGICARE Limited Life Time Warranty program backed by DIGICARE Service Center. To avail this Limited Life Time Warranty offer, customer needs to contact DIGICARE's Technical Assistance Center for the same. You may be asked to provide proof of purchase of product for warranty claim of defective product. Please refer web site [www.digisol.com](http://www.digisol.com) for the detailed support terms & conditions and support process.

### Warranty Policy

1. **Hardware Warranty :** Hardware warranty period shall be limited up to Three years. External Power Adapter shall carry One year warranty only against manufacturing defects. Any repair or replacement will be rendered by DIGICARE at its Service Center only.
2. **Software Warranty :** Smartlink issues this Limited Software Warranty that the software portion of the product ("Software") will substantially confirm to Smartlink's then current functional specifications for the software, as set forth in the applicable documentation, from the date of original retail purchase of the Software for a period of one year ("Software Warranty period"), provided that the Software is properly installed on approved hardware and operated as contemplated in its documentation.
3. **Governing Law:** This warranty shall be governed by Indian Laws.
4. The Lifetime Warranty shall be subject to the terms and conditions specified in the DIGISOL PRODUCT WARRANTY displayed on the website of the company.



helpdesk@digisol.com  
1800 209 3444



[illegible]



A product of Smartlink Network Systems Ltd

DIGISOL House, Plot No. 5,  
Kurla Bandra Complex Road  
Santacruz (E), Mumbai - 400 098, India.

Tel +91 22 3061 6666 / 2652 6696,  
Fax +91 22 2652 8914

[www.digisol.com](http://www.digisol.com)

**DIGICARE™**  
Service And Support



**1800 209 3444**

[helpdesk@digisol.com](mailto:helpdesk@digisol.com)  
[sales@digisol.com](mailto:sales@digisol.com)