



Quick Installation Guide

802.11b/g/n 300Mbps
Wireless LAN USB Adapter
DG-WN3300N



up to 300 Mbps

Copyright

Copyright © 2017 by DIGISOL SYSTEMS LIMITED. All rights reserved. No part of this publication may be reproduced, transmitted, transcribed, stored in a retrieval system, or translated into any language or computer language, in any form or by any means, electronic, mechanical, magnetic, optical, chemical, manual or otherwise, without the prior written permission of this company.

Trademarks:

DIGISOL™ is a trademark of DIGISOL SYSTEMS LIMITED. All other trademarks are the property of the respective manufacturers.

Package Contents

The following items should be present in your package:

- DG-WN3300N 300Mbps Wireless USB Adapter (1 No.)
- Quick installation guide
- Installation Guide CD (includes User Manual , QIG & Driver/Utility)

Make sure that the package contains above items. If any of the listed items is damaged or missing, please contact your retailer immediately.

Product Overview

Thank you for purchasing DG-WN3300N IEEE 802.11b/g/n 300Mbps wireless N USB adapter! This adapter has a tiny size design which enables users to plug it into the USB port of your computer. DG-WN3300N supports wireless standards IEEE802.11b/g, this wireless adapter also supports IEEE802.11n through which users can get data transfer speed up to 300Mbps.

Product Features

- IEEE 802.11b/g/n compatible.
- Wireless data transfer rate – up to 300Mbps.
- Supports 64/128-bit WEP, WPS, WPA, WPA2 with IEEE 802.1x functions for high level of security.
- Supports the popular operating system: WindowsXP/Vista/7/8 (32-bit).
- Supports softAP function.
- Supports USB 2.0 interface.
- Portable and tiny size design.

System Requirements

The following system requirements are recommended:

- An empty USB 2.0 port
- Windows XP/Vista/7/8 (32-bit) operating system
- CD-ROM drive
- At least 100MB of available disk space

Product View

Below shown is the product view indicating the USB interface and Status LED (under the case).



After installing the wireless adapter, users can verify its status from the LED indicators as shown below.

LED Name	Light Status	Description
Status	Off	Wireless Radio is switched OFF.
	On	Steady light 5 seconds means WPS connection is established successfully.
	Blinking	i) Wireless network adapter is normally installed. ii) Linked to a wireless access point. iii) Transferring or receiving data. Fast Blinking three times per second means WPS is activated. The USB adapter will wait for 2 minutes to establish WPS connection.

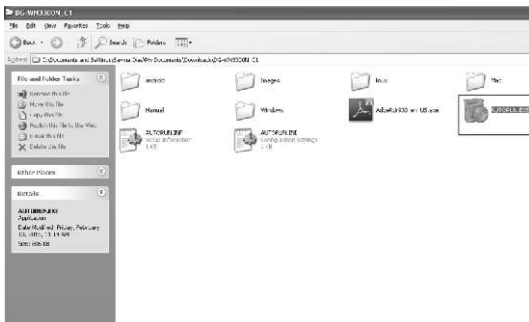
Driver Installation

Please follow the instructions mentioned below to install your new wireless USB adapter:

Note1: The following installation was operated under Windows XP. (Procedures are similar for Windows Vista/XP/7/8.)

Note2: If you have installed the Wireless PC Adapter driver & utility before, please uninstall the previous version first.

- 1 Insert "Installation Software CD" into the CD/DVD ROM drive of your computer. "AUTORUN.EXE" program will run automatically.

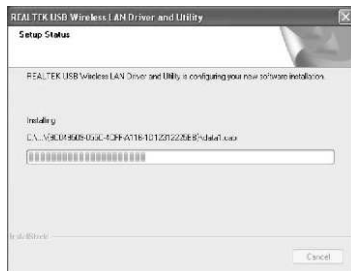




- 2 Click "Drivers & Utility" to begin with the driver and utility installation. The following screen appears. Click on "Next".



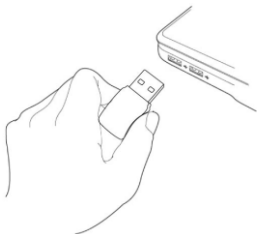
- 3 The Installation procedure will need few minutes to complete the setup, please be patient.



- 4 Click 'Finish' to reboot your computer to complete the installation procedure. If you don't want to reboot the computer now, select 'No, I'll restart my computer later' option and click 'Finish'. Please note you have to reboot your computer before you can use your new wireless USB adapter.



- 5 Once computer has restarted, insert the wireless USB adapter into an empty USB 2.0 port. Never use force to insert the adapter, if you feel it's stuck, flip it over and try again.



- ⑥ A new icon will appear near the clock of system tray:



Here!

Driver Installation is now Complete!

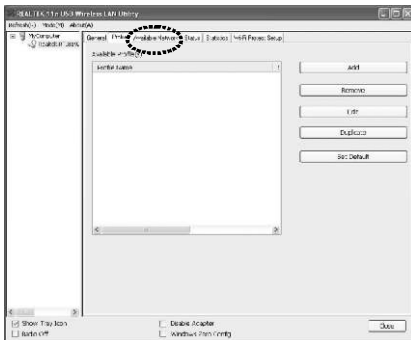
Connecting to a Wireless Network

- ① Left-click the DIGISOL configuration utility icon located at lower-right corner of computer desktop, and configuration menu will appear:

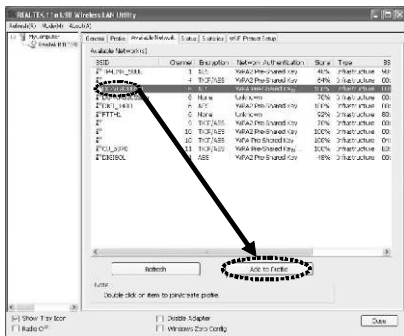


HERE!

- ② Wireless utility will appear. Click 'Available Network' menu to search for wireless access points nearby.



- 3 Please wait for a while, and all wireless access points which can be reached by this wireless network adapter will be displayed here.

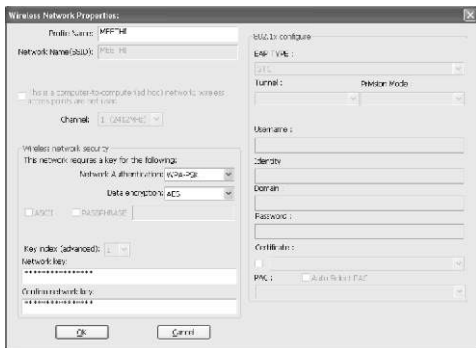


If the wireless Access Point you wish to connect does not appear here, you can click 'Refresh' button to scan for wireless access points again; if the wireless Access Point you're looking for still does not appear, try to move the computer closer.

When the Access Point you're looking for is on the list, left-click it and then double click it or click 'Add to Profile'.

- 4 If a password is required to access the wireless access point, please input it in 'Network key' (and input it again in 'Confirm network key' for confirmation). Click 'OK' when password is properly inputted.

NOTE: Network security type ('Network Authentication' and 'Data encryption') will be selected automatically based on wireless access point's security setting. It's not required to change these settings yourself.



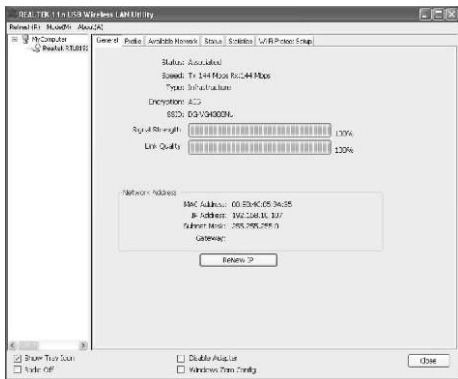
The image shows a 'Wireless Network Properties' dialog box with the following fields and options:

- Profile Name:** WFTHE
- Network name (SSID):** PDS-HE
- ☐ **Is it a computer-to-computer (ad hoc) network to wireless access points are not used.**
- Channel:** 1 (2412MHz)
- Wireless network security:**
 - This network requires a key for the following:
 - Network Authentication:** WPA-PSK
 - Data encryption:** AES
 - ☐ ASCII ☐ PASSWORD
 - Key index (advanced):** 1
 - Network key:** *****
 - Confirm network key:** *****
- SSID to configure:** (dropdown)
- EAP Type:** (dropdown)
- Tunnel:** (dropdown)
- Authentication Mode:** (dropdown)
- Username:** (text field)
- Identity:** (text field)
- Domain:** (text field)
- Password:** (text field)
- Certificate:** (dropdown)
- ☐ **PKC:** ☐ Auto Select PAK

Buttons: OK, Cancel

- 5 Network adapter will attempt to connect to access point now, this may require few seconds to minutes, please be patient. When the 'Status' becomes 'Associated', your computer is connected to access point you selected. Click 'Close' to close configuration menu.

NOTE: If you are connected to an access point but the connection has dropped soon, please check security settings and re-check password spelling.



Now the Wireless adapter will be connected to the Access Point and users can access their LAN Resources.





Limited Lifetime Warranty

This Product is covered under DIGICARE Limited Lifetime Warranty program backed by DIGICARE Service Center. To avail this Limited Lifetime Warranty offer, customer needs to contact DIGICARE's Technical Assistance Center for the same. You may be asked to provide proof of purchase of product for warranty claim of defective product. Please refer website www.digisol.com for the detailed support terms & conditions and support process.

Warranty Policy

- 1. Hardware Warranty :** Hardware warranty period shall be limited up to Three years. External Power Adapter shall carry One year warranty only against manufacturing defects. Any repair or replacement will be rendered by DIGICARE at its Service Center only.
- 2. Software Warranty :** DIGISOL issues this Limited Software Warranty that the software portion of the product ("Software") will substantially confirm to DIGISOL's then current functional specifications for the software, as set forth in the applicable documentation, from the date of original retail purchase of the Software for a period of one year ("Software Warranty period"), provided that the Software is properly installed on approved hardware and operated as contemplated in its documentation.
- 3. Governing Law:** This warranty shall be governed by Indian Laws.
- 4. Limited Lifetime Warranty** shall subject to the terms & conditions specified in the DIGISOL PRODUCT WARRANTY policy displayed on www.digisol.com



 helpdesk@digisol.com
 1800 209 3444



This image shows a single sheet of white paper with horizontal ruling lines. The lines are evenly spaced and run across the width of the page. There are no margins, text, or other markings on the paper.



DIGISOL SYSTEMS LIMITED

Smartlink House, Plot. No. 5,
Off CST Road, Bandra-Kurla Complex Road,
Santacruz (East), Mumbai - 400 098, India.

Tel: +91 22 3061 6666 / 2652 6696,

Fax: +91 22 2652 8914

A Subsidiary of Smartlink Network Systems Ltd.

www.digisol.com



1800 209 3444



helpdesk@digisol.com
sales@digisol.com