

Quick Installation Guide



DG-HR1070MSE

DIGISOL 4G MI-FI PORTABLE BROADBAND ROUTER

V2.0
2017-01-16

As our products undergo continuous development the specifications are subject to change without prior notice

Copyright

Copyright 2017 by Digisol Systems Ltd. All rights reserved. No part of this publication may be reproduced, transmitted, transcribed, stored in a retrieval system, or translated into any language or computer language, in any form or by any means, electronic, mechanical, magnetic, optical, chemical, manual or otherwise, without the prior written permission of this company.

Trademarks

DIGISOL™ is a trademark of Digisol Systems Ltd. All other trademarks are the property of the respective manufacturers.

Introduction

The DIGISOL™ DG-HR1070MSE HSPA+ Mobile Router lets you share a fast mobile Internet connection with multiple PCs and mobile devices wherever you go. It offers 4G/3G LTE/ HSPA+ compatibility for fast downlink and uplink data rates, so you get the high-speed upload and download speeds even when you're on the go. Set up a personal mobile network anywhere, anytime allowing you and those around you to access the Internet, and share files.

Package Contents

The following items should be present in your package:

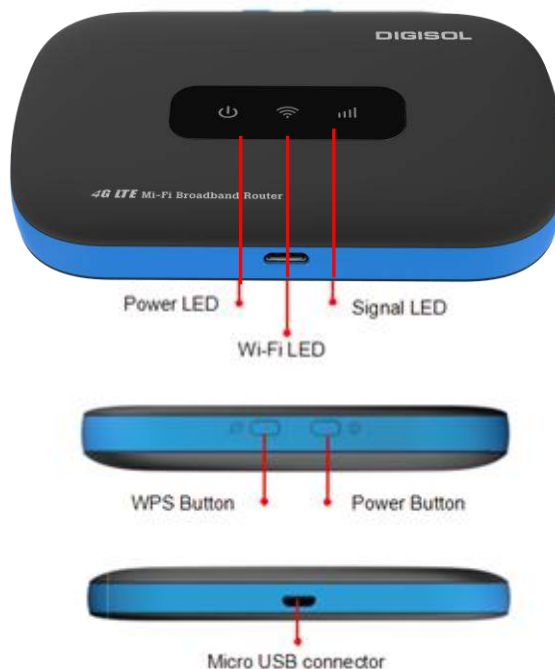
- DG-HR1070MSE 4G Mi-Fi Broadband Router
- Lithium 2000mAh rechargeable battery
- Power Adapter (5V, 1A)
- Micro USB Cable
- Quick Installation Guide

Make sure that the package contains above items. If any of the listed items is damaged or missing, please contact your retailer immediately.

System Requirements

- A compatible (U) SIM card with mobile data service.
- A computer with Windows®, Macintosh®, or Linux-based operating systems.
- Internet Explorer 8, Firefox 12.0, Chrome 20.0, or Safari 4.0.

Hardware Overview



External Buttons

key	Illustrate
Power key	Long press over 5 seconds to power on and long press to power off
WPS	Press to active the WPS
Reset	The Reset button (Inside the bottom cover) if you forget Administrator password press reset key.

LED chart

Indicator	Color	Working Status	
Power LED	Amber	Charging	Blink: Turn on-0.5s Turn off-0.5s
	Blue	Battery High (100%-60%) or Charge Completed	
	Green	Battery Middle (60%-10%)	
	Red	Blink: Battery too low nearly shutdown (10%)	
	Purple	Blink: New SMS	
Signal LED	Blue	Solid: Register to LTE (not connected) Blink: Connected to LTE network	
	Green	Solid: Register to 3G (not connected) Blink: Connected to 3G network	
	Purple	Solid: Register to 2G (not connected) Blink: Connected to 2G network	
	Red	Blink: No Service/Device Error	
WiFi LED	Blue	Solid: No Client Blink: Client is active	Blink: Turn on-0.2s Turn off-0.1s
		Blink: WPS is active	

Connect to your network

1. Ensure that your DG-HR1070MSE 4G Mobile Router is powered OFF.
2. Remove the back cover and take out the battery. Slide your (U) SIM card into the slot provided, ensuring that the alignment is the same as indicated by the logo next to the slot. The gold contacts on the card should be facing downwards.

Caution: Always unplug and turn off the router before installing or removing the SIM card. Never insert or remove the SIM card while the router is in use.

3. Press and hold the power button at the side of the router.
 - a. The Power LED will light Blue or Green after Power on and performs its initialization processes.
 - b. After a few moments, the Wireless LED will glow blue. For more details please refer to “**LED Status**” explained earlier.

Configure the Router

Connect via Wi-Fi:

To connect to the router using Wi-Fi, open your operating system's wireless networking utility and scan for available networks. By default, the network name (SSID) of DG-HR1070MSE will be “**DIGISOL**”

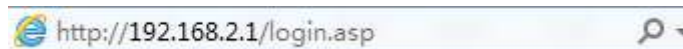


You will then be prompted to enter the network security key for your router. The unique security key for your router will be displayed on a sticker in the router's battery bay. By default the security key is “**12345678**”.

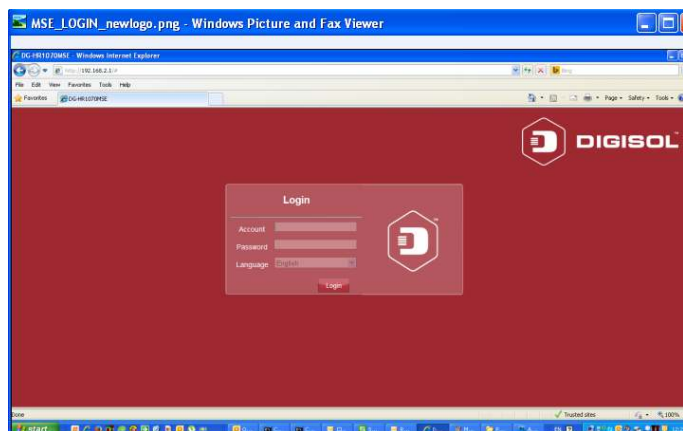


Web Based Configuration

To access the configuration, open a web browser (such as Internet Explorer) and enter the IP address of the router, which is **192.168.2.1** by default.



Once you have reached the configuration utility through your web browser, you will need to log in. Enter **admin** as the username, and then enter the password. By default, the password is **1234**.



Click Login to continue.

Note: For detailed configuration of the router, please refer to the user manual.

DIGICARE™ Limited Lifetime Warranty

This Product is covered under DIGICARE Limited Lifetime Warranty program backed by DIGICARE Service Center. To avail this Limited Lifetime Warranty offer, customer needs to contact DIGICARE's Technical Assistance Center for the same. You may be asked to provide proof of purchase of product for warranty claim of defective product. Please refer website www.digisol.com for the detailed support terms & conditions and support process.

Warranty Policy

1. **Hardware Warranty :** Hardware warranty period shall be limited up to Three years. External Power Adapter shall carry One year warranty only against manufacturing defects. Any repair or replacement will be rendered by DIGICARE at its Service Center only.
2. **Software Warranty :** Digisol issues this Limited Software Warranty that the software portion of the product ("Software") will substantially confirm to Digisol then current functional specifications for the software, as set forth in the applicable documentation, from the date of original retail purchase of the Software for a period of one year ("Software Warranty period"), provided that the Software is properly installed on approved hardware and operated as contemplated in its documentation.
3. **Governing Law:** This warranty shall be governed by Indian Laws.
4. **Limited Lifetime Warranty** shall subject to the terms & conditions specified in the DIGISOL PRODUCT WARRANTY policy displayed on www.digisol.com



helpdesk@digisol.com
1800 209 3444



This product comes with a Limited Lifetime Warranty. For further details about warranty policy and Product Registration, please visit support section of www.digisol.com