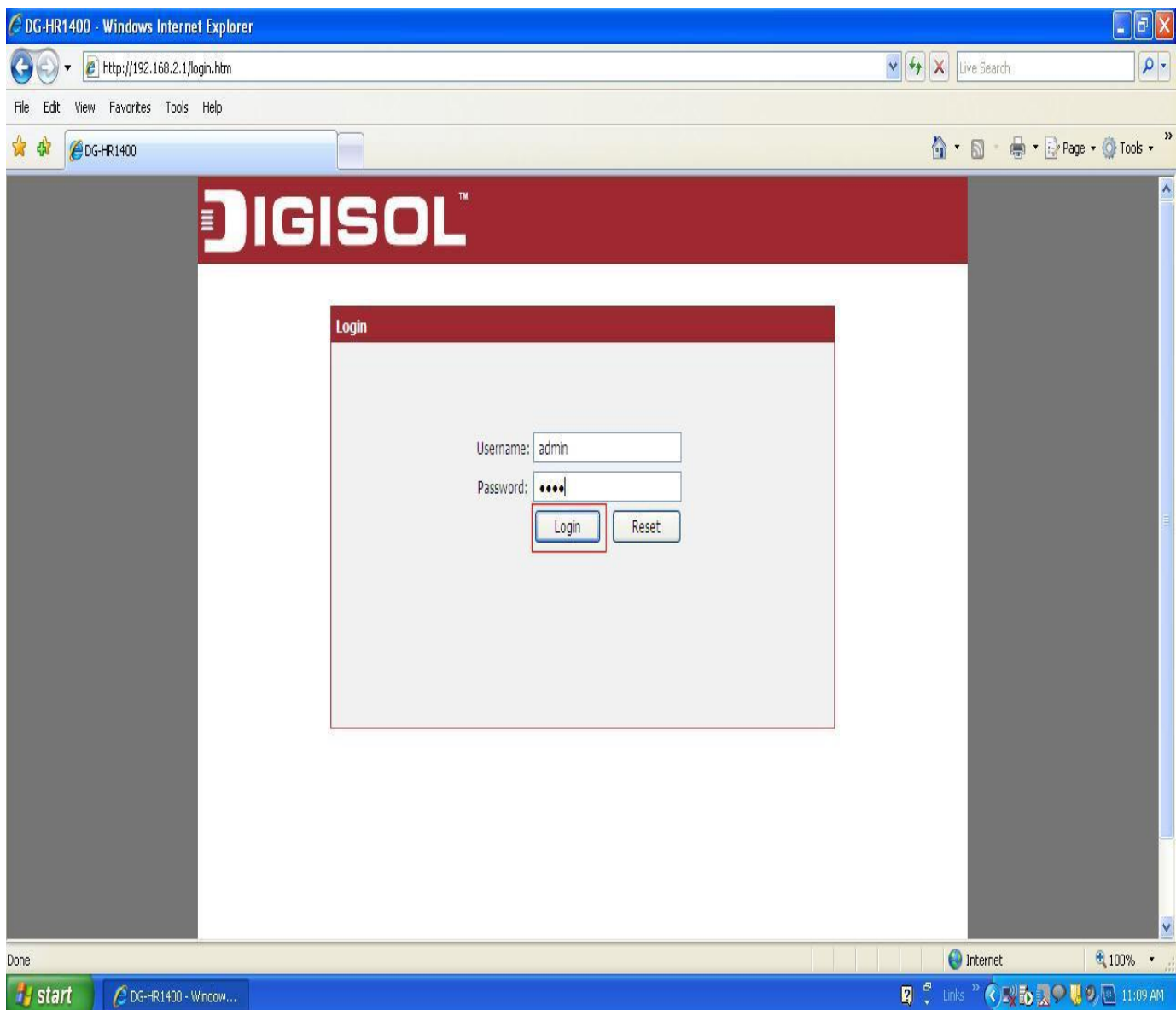


[HOW TO CONFIGURE YOUR DG-HR1400 FOR INTERNET ACCESS](#)

STEP 1: ACCESSING THE WEB CONFIGURATION PAGE INSIDE THE ROUTER

Open the configuration page of the router by typing <http://192.168.2.1> in a web browser. We recommend this one time configuration to be done using [Internet Explorer](#).

Enter the username as [admin](#) and password as [1234](#) and click on Login

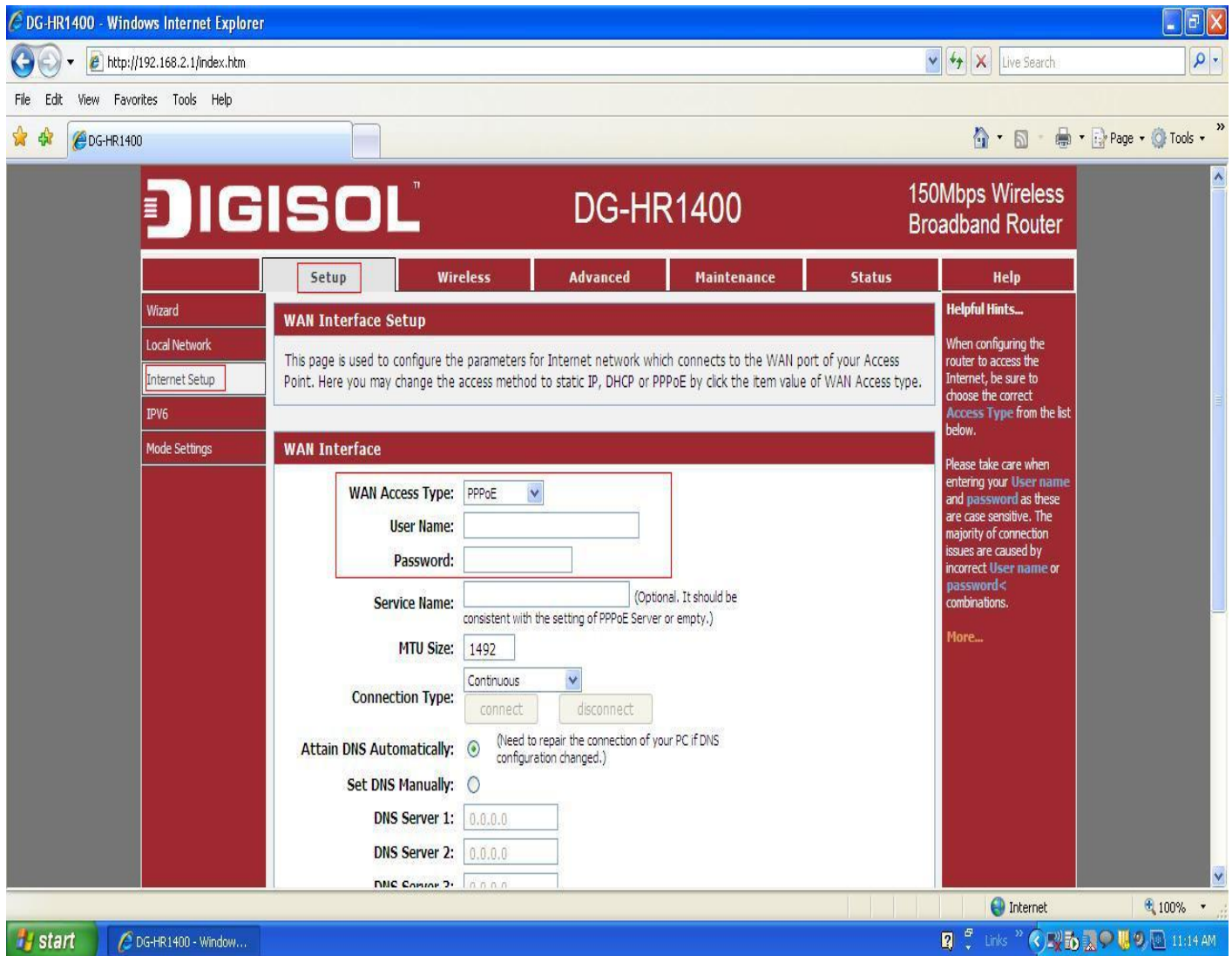


STEP 2: CONFIGURE THE ROUTER IN PPPOE MODE

Click on [Setup > Internet Setup](#)

Under [WAN Interface](#) > Select WAN Access Type as **PPPoE**

Enter **Username** and **Password** provided by the ISP



DIGISOL™ DG-HR1400 150Mbps Wireless Broadband Router

Setup Wireless Advanced Maintenance Status Help

Wizard
Local Network
Internet Setup
IPv6
Mode Settings

WAN Interface Setup

This page is used to configure the parameters for Internet network which connects to the WAN port of your Access Point. Here you may change the access method to static IP, DHCP or PPPoE by click the item value of WAN Access type.

WAN Interface

WAN Access Type: PPPoE

User Name:

Password:

Service Name: (Optional. It should be consistent with the setting of PPPoE Server or empty.)

MTU Size: 1492

Connection Type: Continuous

connect disconnect

Attain DNS Automatically: (Need to repair the connection of your PC if DNS configuration changed.)

Set DNS Manually:

DNS Server 1:

DNS Server 2:

DNS Server 3:

Helpful Hints...

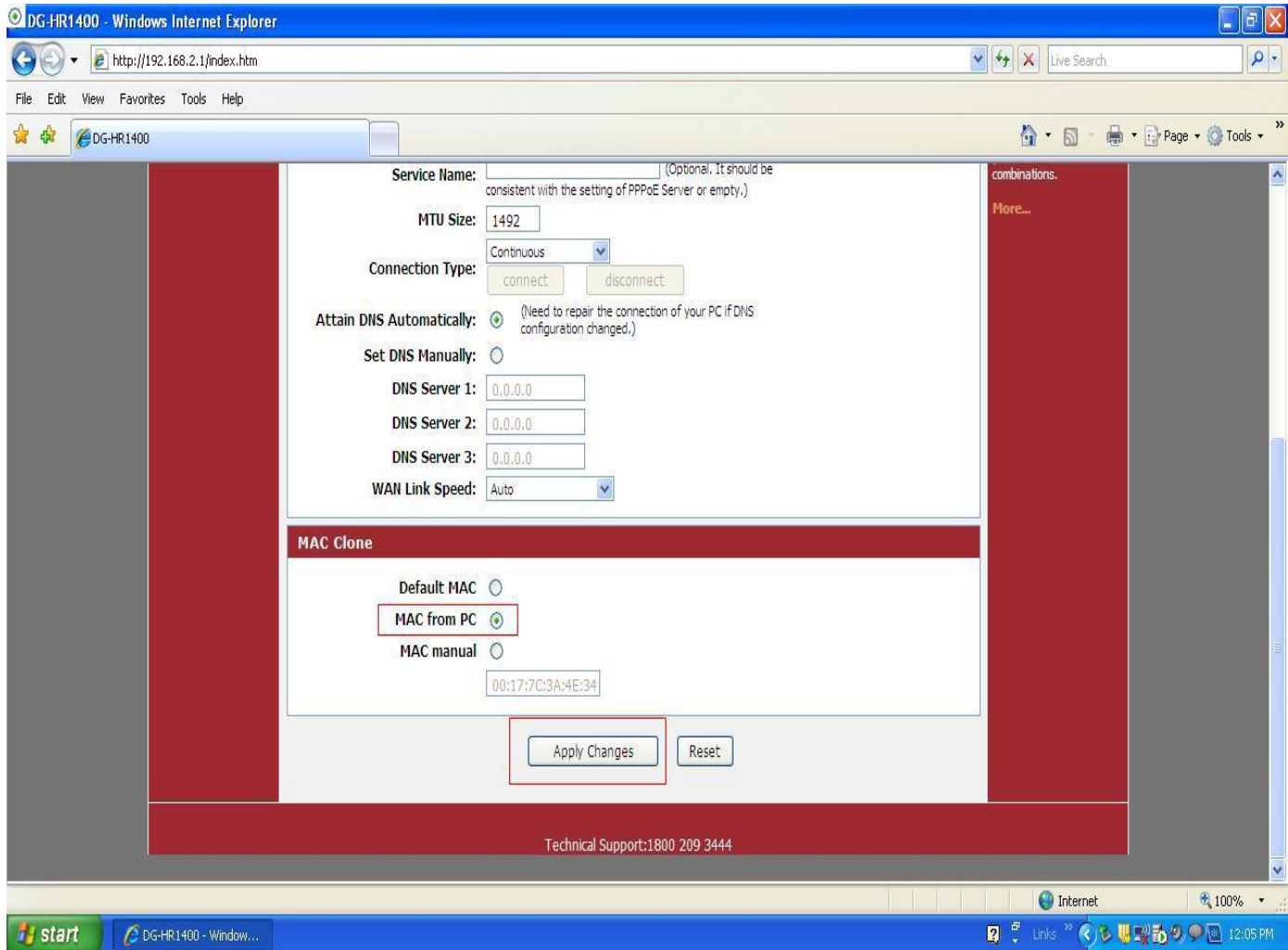
When configuring the router to access the Internet, be sure to choose the correct Access Type from the list below.

Please take care when entering your User name and password as these are case sensitive. The majority of connection issues are caused by incorrect User name or password combinations.

More...

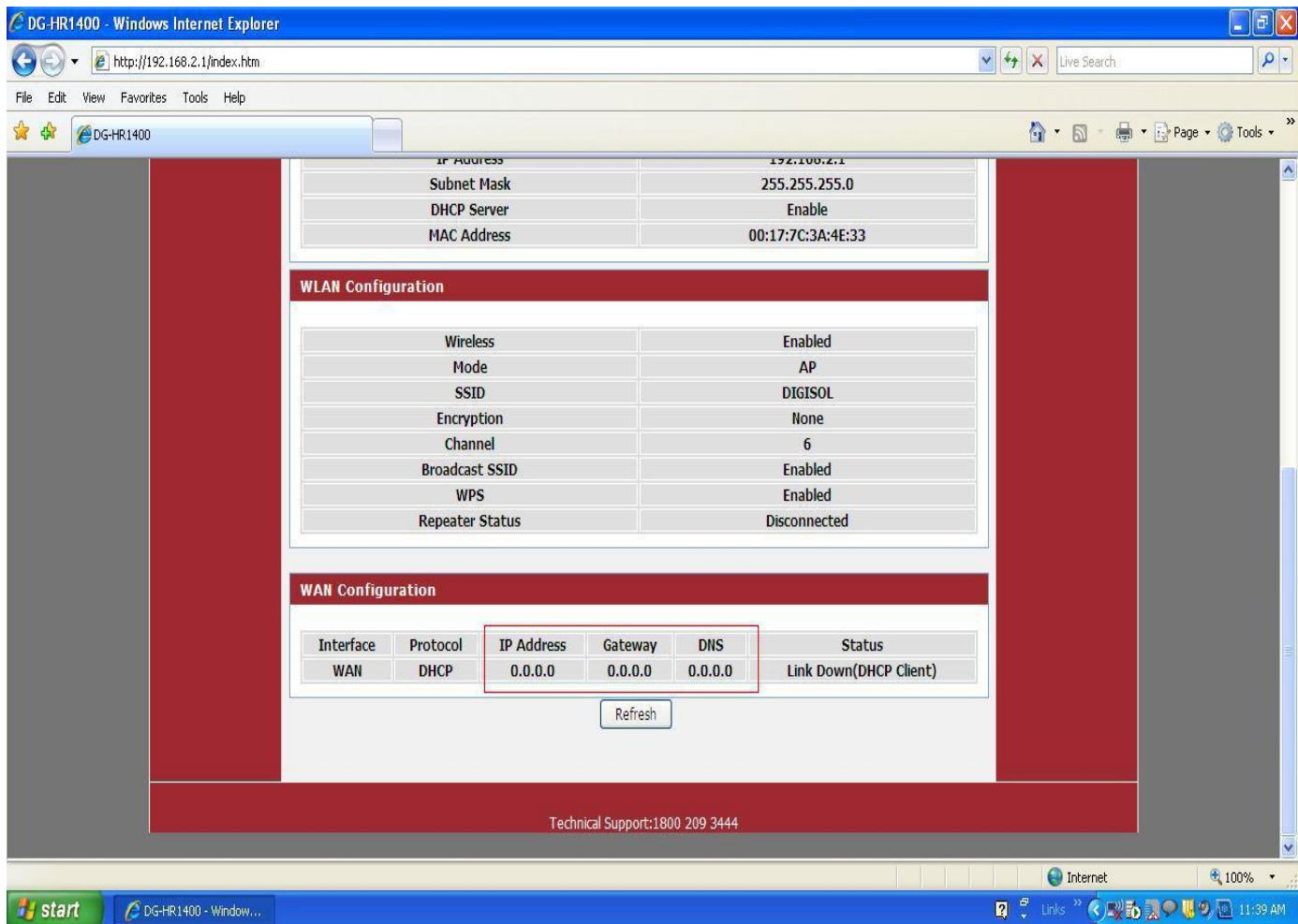
Under [MAC Clone](#) > Select [MAC From PC](#)

Click on [Apply Changes](#)



STEP 3: CHECKING INTERNET ACCESS

Click [Status > Device Info >](#) If you are successfully connected to the internet, you will get numbers like 114.35.54.56 etc .Under [WAN Configuration >](#) Inside the [IP Address](#) and [Gateway](#) sections.



The screenshot shows the web interface of a DG-HR1400 router. The browser address bar shows `http://192.168.2.1/index.htm`. The interface displays the following configuration sections:

IP Address	
IP Address	192.168.2.1
Subnet Mask	255.255.255.0
DHCP Server	Enable
MAC Address	00:17:7C:3A:4E:33

WLAN Configuration	
Wireless	Enabled
Mode	AP
SSID	DIGISOL
Encryption	None
Channel	6
Broadcast SSID	Enabled
WPS	Enabled
Repeater Status	Disconnected

WAN Configuration					
Interface	Protocol	IP Address	Gateway	DNS	Status
WAN	DHCP	0.0.0.0	0.0.0.0	0.0.0.0	Link Down(DHCP Client)

Technical Support:1800 209 3444

Now verify the internet access through DG-HR1400 router.