

[How to secure the wireless network on DG-BG4100NU?](#)

STEP 1: ACCESSING THE WEB CONFIGURATION PAGE OF THE ROUTER

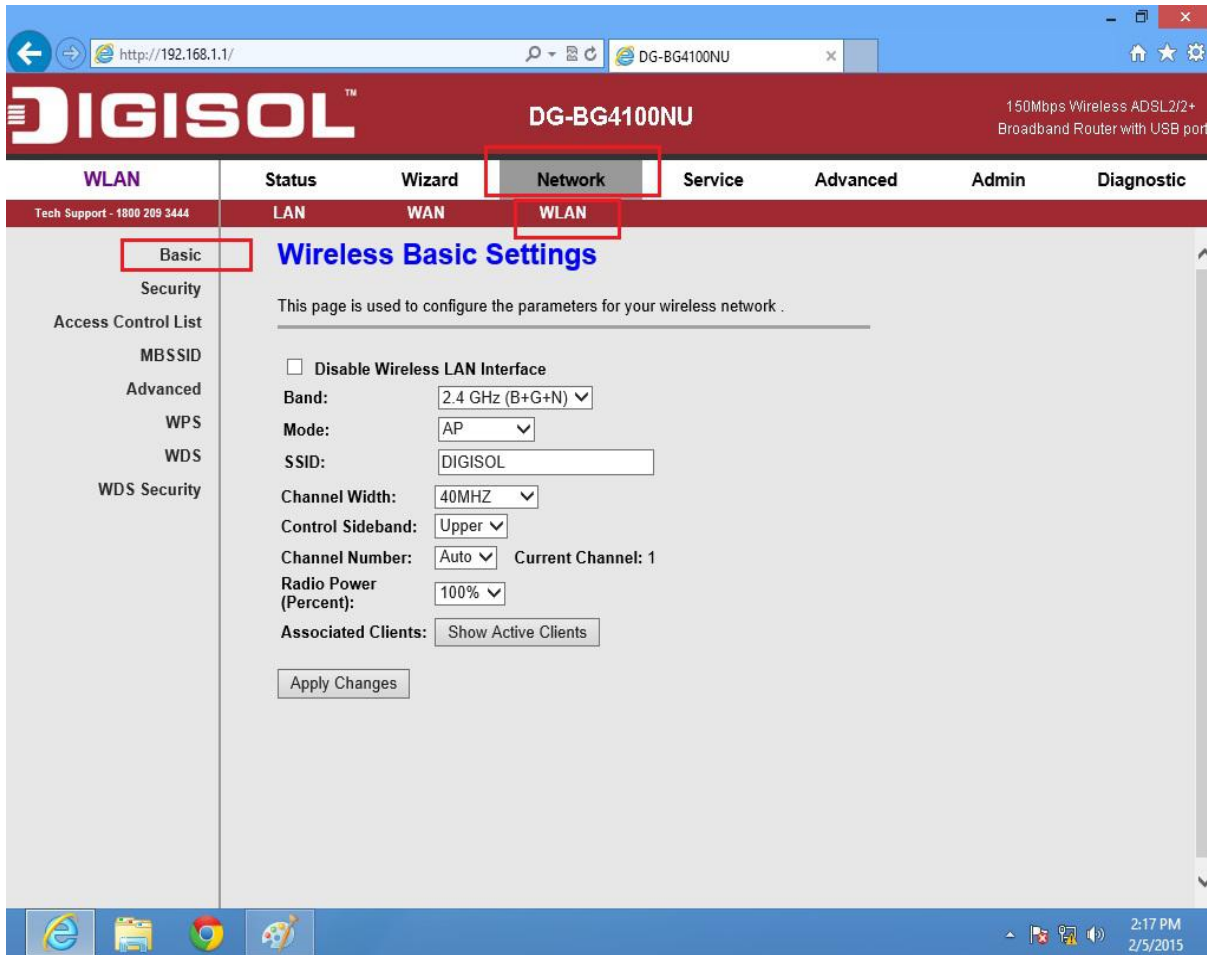
Open the configuration page of the router by typing <http://192.168.1.1> in a web browser. We recommend this one time configuration to be done using [Internet Explorer](#).

Enter the username as [admin](#) and password as [admin](#) and click on OK.



STEP 2: CONFIGURE WIRELESS SETTINGS

Click on [Network > WLAN](#). Then click on [Basic](#) on the left hand side.



The screenshot shows the DIGISOL DG-BG4100NU web interface. The browser address bar shows <http://192.168.1.1/>. The page title is "DIGISOL™ DG-BG4100NU" and the subtitle is "150Mbps Wireless ADSL2/2+ Broadband Router with USB port". The navigation menu includes "WLAN", "Status", "Wizard", "Network", "Service", "Advanced", "Admin", and "Diagnostic". The "WLAN" tab is selected, and the "Basic" sub-tab is highlighted. The "Wireless Basic Settings" page is displayed, with the following configuration options:

- Disable Wireless LAN Interface
- Band: 2.4 GHz (B+G+N)
- Mode: AP
- SSID: DIGISOL
- Channel Width: 40MHZ
- Control Sideband: Upper
- Channel Number: Auto (Current Channel: 1)
- Radio Power (Percent): 100%
- Associated Clients: Show Active Clients

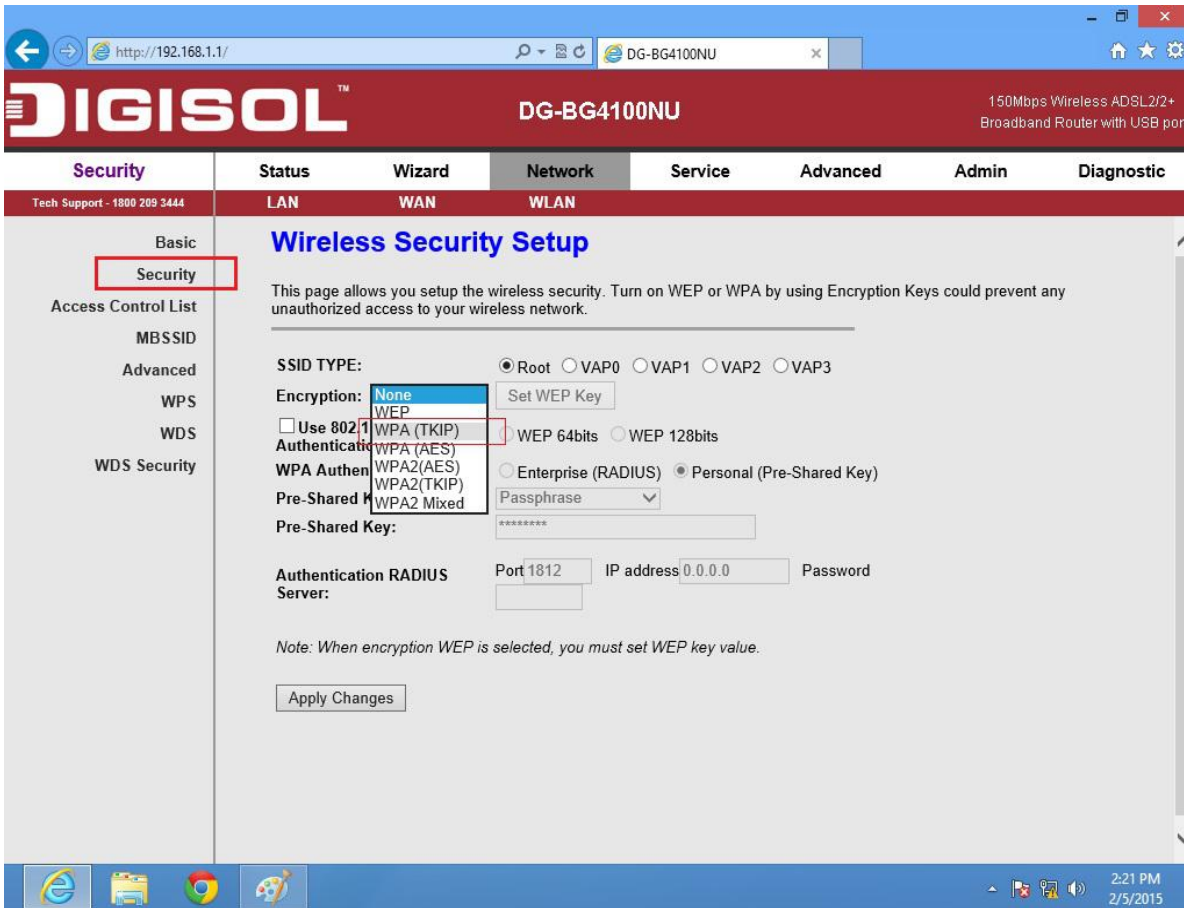
An "Apply Changes" button is located at the bottom of the settings area.

Under [Wireless Basic Settings](#), change the **SSID**. It is your wireless network name.

Click on [Apply Changes](#).

STEP 3: CONFIGURE WIRELESS SECURITY

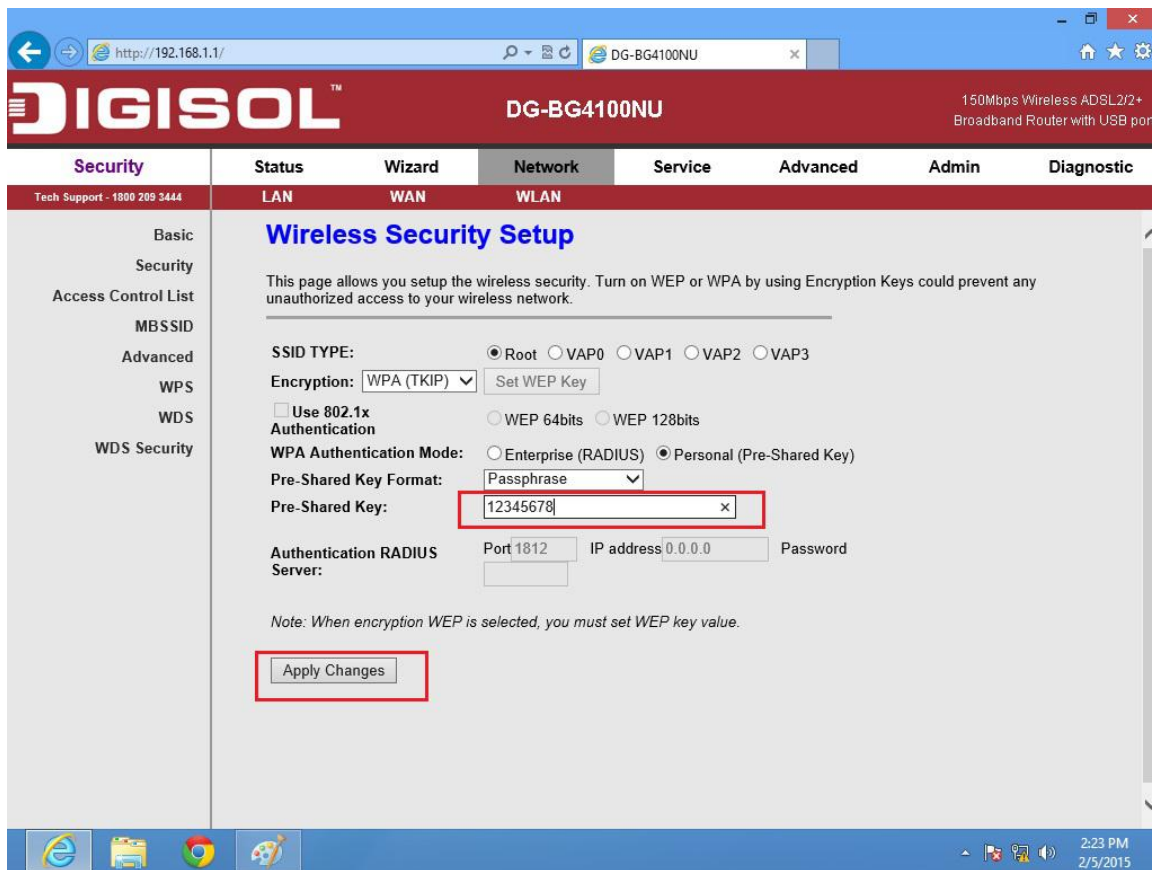
Click on [Security](#) on the left hand side.



The screenshot displays the DIGISOL DG-BG4100NU web interface. The browser address bar shows <http://192.168.1.1/>. The page title is "DIGISOL™ DG-BG4100NU" and the subtitle is "150Mbps Wireless ADSL2/2+ Broadband Router with USB port". The navigation menu includes Security, Status, Wizard, Network, Service, Advanced, Admin, and Diagnostic. The left sidebar has a "Security" menu item highlighted with a red box. The main content area is titled "Wireless Security Setup" and contains the following text: "This page allows you setup the wireless security. Turn on WEP or WPA by using Encryption Keys could prevent any unauthorized access to your wireless network." The "SSID TYPE:" section has radio buttons for Root, VAP0, VAP1, VAP2, and VAP3. The "Encryption:" section has a dropdown menu with options: None, WEP, WPA (TKIP), WPA (AES), WPA2 (AES), WPA2 (TKIP), and WPA2 Mixed. The "WPA (TKIP)" option is selected. Below the dropdown are radio buttons for "WEP 64bits" and "WEP 128bits". The "WPA Authen" section has radio buttons for "Enterprise (RADIUS)" and "Personal (Pre-Shared Key)". The "Personal (Pre-Shared Key)" option is selected. Below this is a "Passphrase" dropdown menu and a text input field for the "Pre-Shared Key". The "Authentication RADIUS Server:" section has input fields for "Port 1812", "IP address 0.0.0.0", and "Password". A note states: "Note: When encryption WEP is selected, you must set WEP key value." An "Apply Changes" button is at the bottom.

Under **SSID TYPE**, select **Root**

Select **Encryption** as **WPA (TKIP)**



Under **Pre-Shared Key format** select **Passphrase**

In **Pre-Shared Key**, enter the new wireless password

Note: Make sure that the Pre-Shared Key is minimum of 8 characters which can be alphanumeric.

Click on **Apply Changes**

Now scan for the wireless networks on your wireless clients e.g. Laptops, smartphones etc. Select your wireless network and try connecting to the network with the password given on the router. Verify the wireless connectivity.