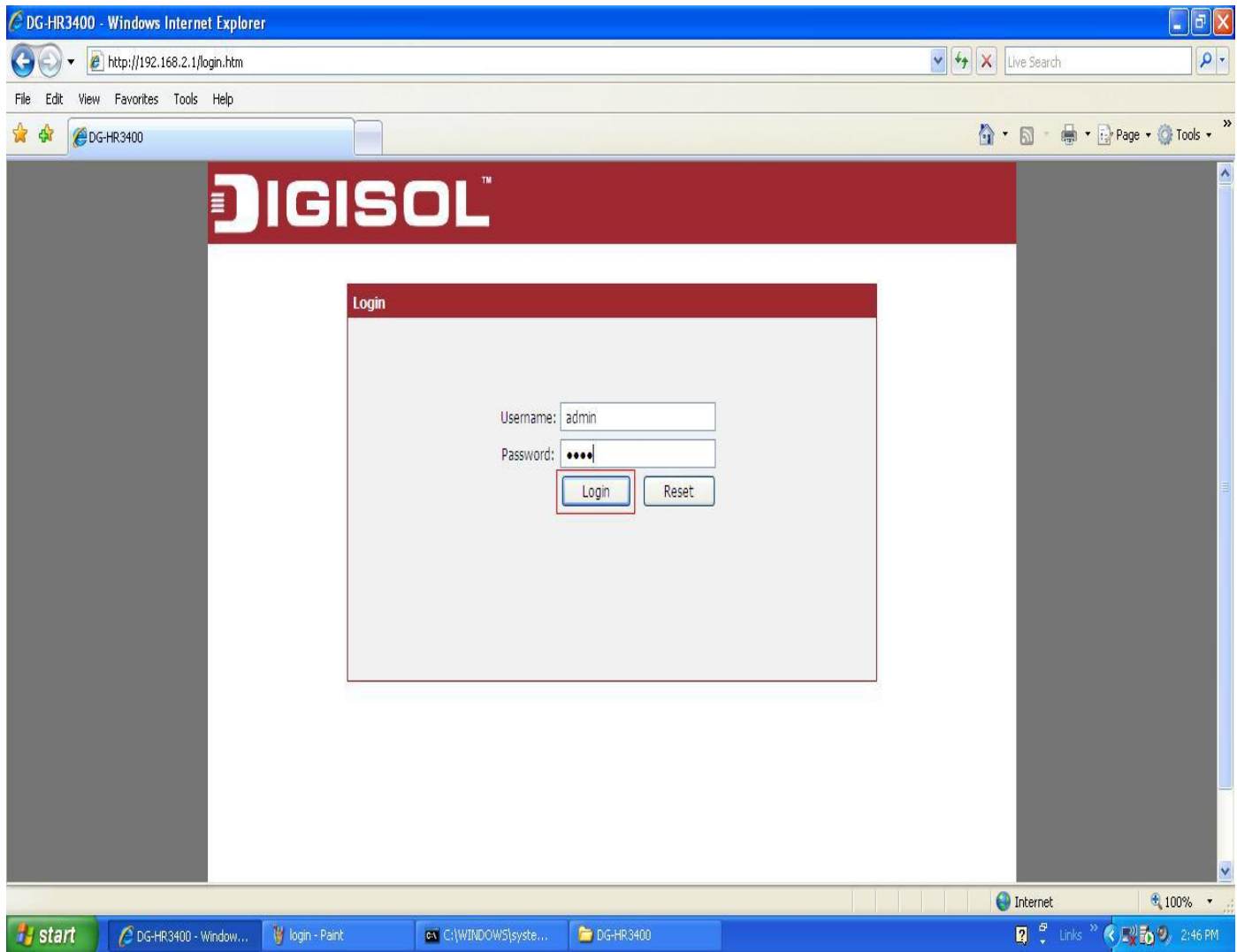


[HOW TO SECURE WIRELESS NETWORK ON DG-HR3400](#)

STEP 1: ACCESSING THE WEB CONFIGURATION PAGE OF THE ROUTER

Open the configuration page of the router by typing <http://192.168.2.1> in a web browser. We recommend this one time configuration to be done using [Internet Explorer](#).

Enter the username as [admin](#) and password as [1234](#) and click on OK.



STEP 2: CONFIGURE WIRELESS SETTINGS

Click on [Wireless](#) then click on [Wireless Basic](#) on the left hand side.

Under Wireless Settings, Select the mode as **AP** and change the **Name (SSID)** as desired



DIGISOL™ DG-HR3400 300Mbps Wireless Broadband Router

Setup **Wireless** Advanced Maintenance Status Help

Wireless Basics
MBSSID
WPS
Wireless Advanced
Wireless Repeater
WDS

Wireless Basics

This page is used to configure the parameters for wireless LAN clients which may connect to your Access Point. Here you may change wireless encryption settings as well as wireless network parameters.

Wireless Settings

Mode: AP

Wireless Network

Enable SSID Broadcast:

Enable Wireless Isolation:

Name(SSID): DIGISOL

Mode: 802.11b/g/n

Channel: 6 Current Channel: 6

Band Width: Auto 20/40M

Security Options

Security Options: None

Apply Cancel

Helpful Hints...

NOTE: To ensure proper agency compliance and compatibility between similar products in your area, the operating channel and region must be set correctly.

Placement of the Router to Optimize Wireless Connectivity

The operating distance or range of your wireless connection can vary significantly based on the physical placement of the router. For best results, place your router:

- Near the center of the area in which your PCs will operate.
- In an elevated location such as a high shelf.
- Away from potential sources

Internet 100%

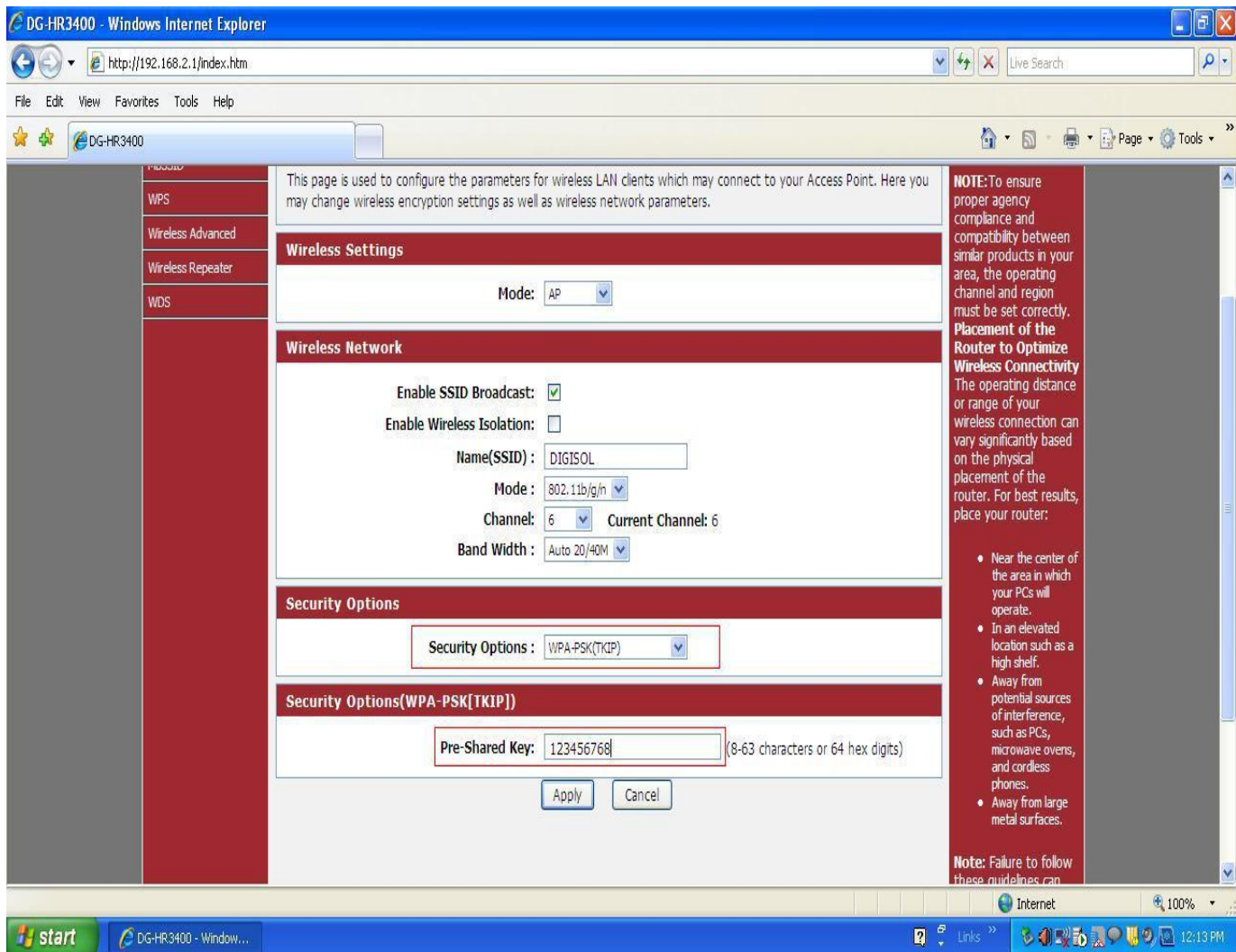
start DG-HR3400 - Window ... Links 12:12 PM

Once the SSID is changed > Under **Security Options** > Select encryption **WPA-PSK(TKIP)**

In **Pre-Shared Key** > Enter the new wireless password

Note: Make sure the Pre-Shared Key should be minimum 8 characters which can be alphanumeric.

Click on **Apply Changes**



Now scan for the wireless networks on your wireless clients e.g. Laptops, smartphones etc. Select your wireless network and try connecting to the network with the password given on the router. Verify the wireless connectivity.