

FIBER SOLUTIONS

PATCH CORD AND PIGTAIL

Patch Cord Single Mode LSZH

- LSZH Jacket-Reduced Toxic Gasses Emitted During Combustion
- 100% Factory Tested
- Available with Corning Fiber
- Available in PC/APC Type Options
- High Precision Ceramic Ferrule with Good Concentricity
- Available in Simplex and Duplex Modes



Patch Cord Multi-Mode LSZH

- LSZH Jacket-Reduced Toxic Gasses Emitted During Combustion
- 100% Factory Tested
- Available with Corning Fiber
- Available in PC/APC Type Options
- High Precision Ceramic Ferrule with Good Concentricity
- Available in Simplex and Duplex Modes



PIG TAILS Single Mode and Multi-Mode LSZH

- LSZH Jacket-Reduced Toxic Gasses Emitted During Combustion
- 100% Factory Tested
- Low Insertion Loss and Return Loss
- Available with Corning Fiber
- Available in PC/APC Type Options
- High Precision Ceramic Ferrule with Good Concentricity

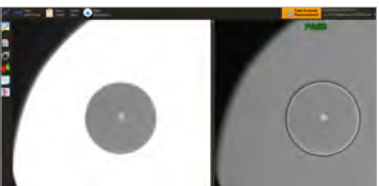


Three Level Testing

DIGISOL Fiber Patch Cords and Pigtails go through 100% testing which include three levels as shown below:

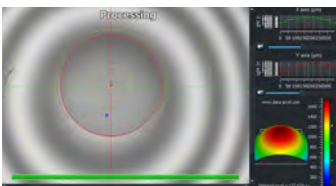
LEVEL ONE

Visual inspection for scratch measurement



LEVEL TWO

Interferometry Test



LEVEL THREE

Optical Test

1. Insertion Loss measurement
2. Return Loss measurement

LIU AND ADAPTERS

Drawer LIU Type

- Available in Standard 19"
- Cold Rolled Steel as Raw Material
- Consist of Top Cover and Bottom Panel
- Easy to Assemble and Disassemble
- Three Types of Input Holes
- Cable Entry Through Water Proof Cable Clamp
- 24 Simplex SC or 12 Duplex LC Adapter Interface
- Splice 24 Fibers at Most with 1 Tray



Sliding LIU Type

- Available in Standard 19"
- Cold Rolled Steel as Raw Material
- Versatile Panel with Expandable Double Slide Rails for Smooth Sliding
- 1RU Installs 2 Pcs Standard Adapter Plates at Different Types
- Front Saddles Pivot for Improved Patch Cord Routing and Organization



Wallmount Fiber LIU Type

- Cold Rolled Steel as Raw Material
- Consist of Top Cover & Bottom Panel
- Easy to Assemble and Disassemble
- Three Types of Input Holes
- Cable Entry Through Water Proof Cable Clamp
- 12 Duplex SC or LC Adapter Interface
- Patch Cord with Bend Radius Guides Minimize Macro Bending



Adapters FC Type

- Compact Design
- Telcordia GR-326-Core
- RoHS Compliance
- Low Insertion and Return Loss
- Self Adjusting Metal Panel Clips
- Available in Flange Mount or D Hole Mount Adapter Styles
- Available in Simplex and Duplex Types



Adapters LC Type

- Small Footprint
- Telcordia GR-326-Core
- RoHS Compliance
- Low Insertion and Return Loss
- Self Adjusting Metal Panel Clips
- Available in Simplex and Duplex Types



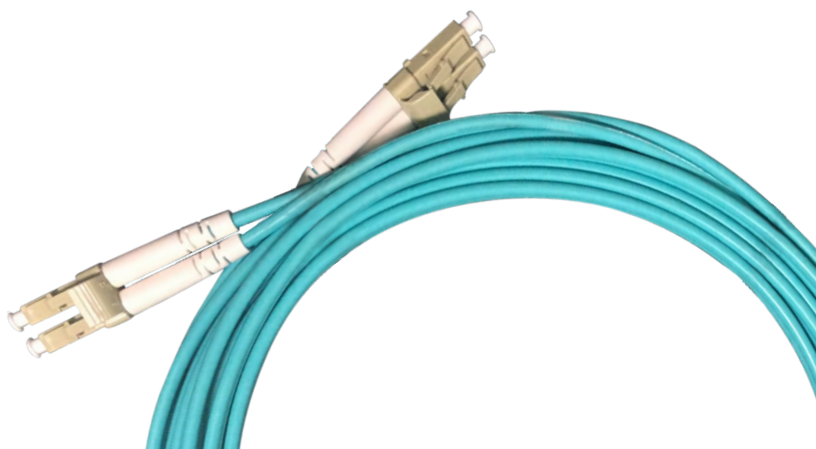
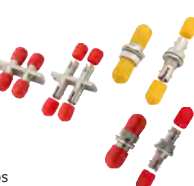
Adapters SC Type

- Compact Design
- Telcordia GR-326-Core
- RoHS Compliance
- Low Insertion and Return Loss
- Available in Simplex and Duplex Types



Adapters ST Type

- Compact Design
- Telcordia GR-326-Core
- RoHS Compliance
- Low Insertion and Return Loss
- Choice of Flange Options
- Self Adjusting Metal Panel Clips

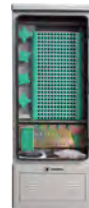


FTTH SOLUTIONS

SMC, ODF, SPLITTERS, FDBS, CONNECTORS AND HOME TERMINATION BOX

SMC Fiber Optic

- Fiber Management Structure adopts unique splice and distribution design for fiber cable and pigtail
- Frame adopts front side cable operation, saves installation space
- Movable connection of pigtail and patch cords can be finished in the same fiber management tray
- Movable connectors adopts inclined 25 degree installation structure ensures bend radius of pigtail and patch cord
- Front panels suitable for FC, SC, ST adapter



ODF Optical Distribution Frame FTTH

- Fiber Management Structure adopts unique splice and distribution design for fiber cable and pigtail
- Frame adopts front side cable operation, saves installation space
- Movable connection of pigtail and patch cords can be finished in the same fiber management tray
- Movable connectors adopts inclined 25 degree installation structure ensures bend radius of pigtail and patch cord
- Front panels suitable for FC, SC, ST adapter



FTTH Splitters, Rack Type

- Low insertion loss
- Low Polarization Dependent Loss
- High Reliability
- Wide wavelength range
- High Return Loss and good Repeatability
- Excellent channel to channel uniformity
- Excellent Environmental Stability
- Excellent Mechanical Stability
- Telcordia GR-1221 and GR-1209



FTTH Splitters, Drawer Type

- Low insertion loss, Low POL and High reliability
- High return loss and Good repeatability
- Wide wavelength range
- Excellent channel-to-channel uniformity



FTTH Splitters, Box Type

- Low Polarization Dependent Loss
- Low insertion loss
- High Reliability
- Wide wavelength range
- High Return Loss and good Repeatability
- Excellent channel to channel uniformity
- Excellent Environmental Stability
- Excellent Mechanical Stability
- Telcordia GR-1221 and GR-1209



FTTH Splitters, Tube Type

- Low insertion loss
- High Reliability
- Low Polarization Dependent Loss
- High Return Loss and good Repeatability
- Wide wavelength range
- Excellent channel to channel uniformity
- Excellent Environmental Stability
- Excellent Mechanical Stability
- Telcordia GR-1221 and GR-1209



FDB FTTH Fiber Distribution Box, 6 Core

- Full Enclosed & Ergonomic Design
- Meets IP65 Grade for wet-proof, water-proof and anti ailing
- Feeder cable and Drop cable fixation, Fiber Splicing, Storage and Distribution
- Separate cable pathway design
- Modular adapter holder design
- Hinged Splice tray for easy installation and maintenance
- Wall Mounted or Pole mounted
- Suitable for Indoor and Outdoor Use



FDB FTTH Fiber Distribution Box, 8 Core

- Full Enclosed & Ergonomic Design
- Meets IP65 Grade for wet-proof, water-proof and anti ailing
- Feeder cable and Drop cable fixation, Fiber Splicing, Storage and Distribution
- Separate cable pathway design
- Modular adapter holder design
- Hinged Splice tray for easy installation and maintenance
- Wall Mounted or Pole mounted
- Suitable for Indoor and Outdoor Use



FDB FTTH Fiber Distribution Box, 12 Core

- Full Enclosed & Ergonomic Design
- Meets IP65 Grade for wet-proof, water-proof and anti ailing
- Feeder cable and Drop cable fixation, Fiber Splicing, Storage and Distribution
- Separate cable pathway design
- Modular adapter holder design
- Hinged Splice tray for easy installation and maintenance
- Wall Mounted or Pole mounted
- Suitable for Indoor and Outdoor Use



FTTH Outlet, Box Type

- Indoor FTTH and Fiber Optic CATV Application
- Inner tray for splice sleeve
- Compact design
- Available with SC Simplex or LC Duplex
- All Modules are solderless mode



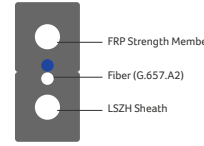
Field Assembly Connectors, Fiber Optic

- Industry leading double V groove alignment clamping mechanism
- User friendly and cost effective
- Superior qualified standard PC, APC, UPC polishing
- Reliable and superior optical performance
- Good exchange ability and good reliability
- No electricity required
- Cable tensile test complies with GR-326-CORE
- No epoxy and polishing required
- Only three pre-assembly parts



Drop Cable, FTTH

- Simple Structure
- Light Weight
- Novel Groove Design
- Easily Strip and Splice
- High Tensile Strength and Metal Free
- Simplified Installation and Maintenance
- LSZH and Flame Retardant Sheath
- Environment Friendly and Good Safety



DIGISOL SYSTEMS LIMITED
A Subsidiary of Smartlink Holdings Limited

1800-209-3444 | helpdesk@digisol.com | www.digisol.com

@digisol_solutions

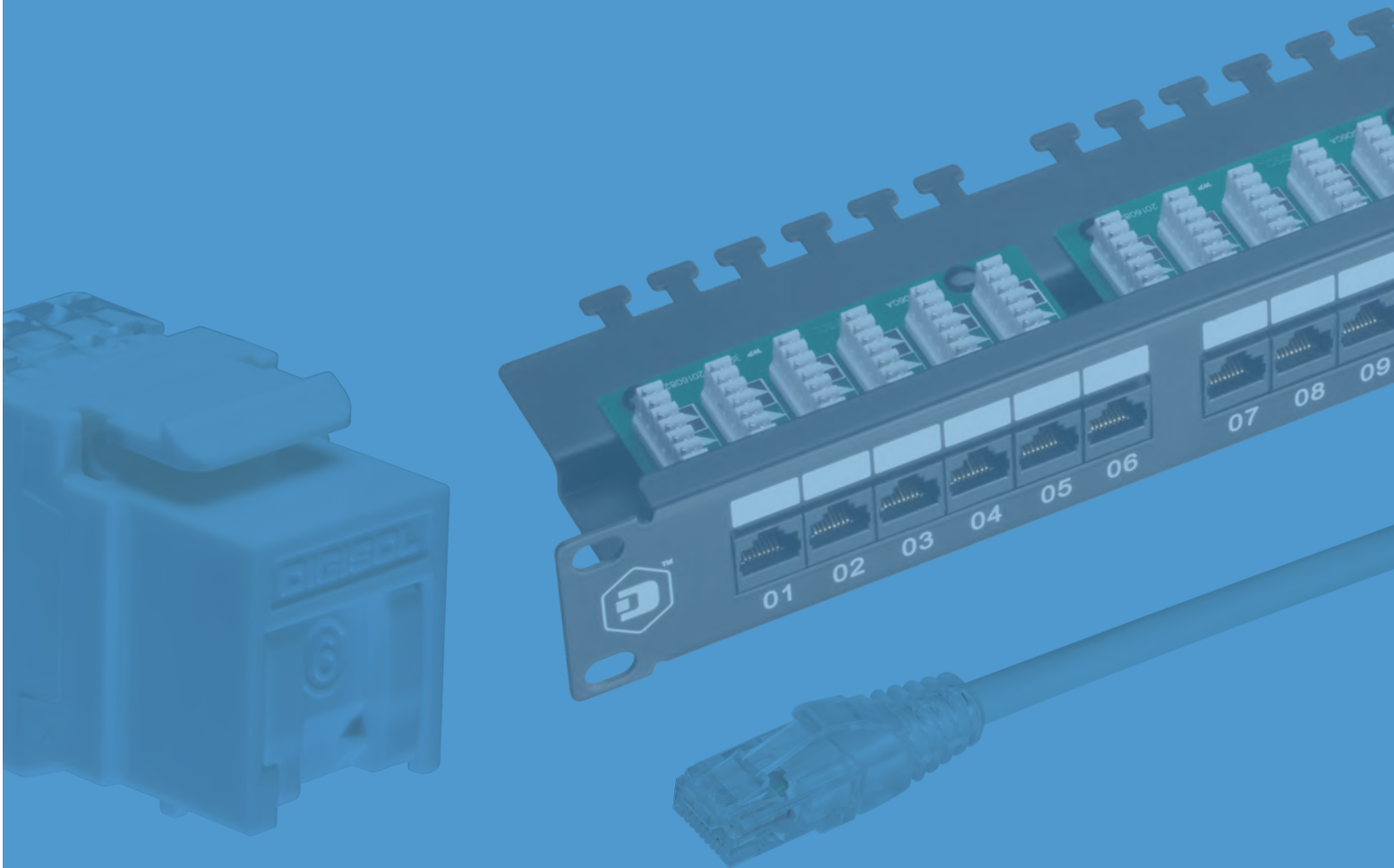
@DIGISOLINDIA

@DIGISOL_SNSL

Authorised Partner

VER. 1/5

STRUCTURED
CABLING SYSTEMS
COPPER • FIBER • FTTH



COPPER SOLUTIONS

SOLID CABLES

Cat6A UTP, 4 Pair, 23 AWG, Grey, 305m

- 4 Pair 23 AWG
- UTP FR-PVC Cable
- Horizontal Cabling Networks
- Transmission Of High Speed Data
- Digital and Analog
- Voice and Video Signals On LANs
- Made In India

**Cat6A FTP, 4 Pair, 23 AWG, Grey, 305m**

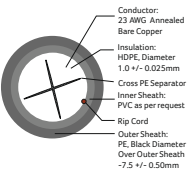
- 4 Pair 23 AWG
- FTP FR-PVC Cable
- Horizontal Cabling Networks
- Transmission Of High Speed Data
- Digital and Analog
- Voice and Video Signals On LANs
- Made In India

**Cat6 UTP, 4 Pair, 23 AWG, Grey, 305m**

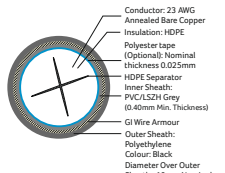
- 4 Pair 23 AWG
- UTP FR-PVC Cable
- Horizontal Cabling Networks
- Transmission Of High Speed Data
- Digital and Analog
- Voice and Video Signals On LANs
- Made In India

**Cat6 UTP, Outdoor Double Jacket, 4 Pair, 23 AWG, Black, 305m**

- 4 Pair 23 AWG
- UTP FR-PVC Cable
- Inner Sheath PVC & Outer Sheath Black PE
- Rugged Double sheath construction
- Horizontal Cabling Networks
- Transmission Of High Speed Data
- Digital and Analog Voice and Video Signals On LANs
- Made In India

**Cat6 UTP, Outdoor Armoured Cable, 4 Pair, 23 AWG, Black, 305m**

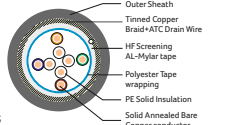
- 4 Pair 23 AWG
- UTP FR-PVC Cable
- Inner Sheath PVC, ECCS Tape Armour With Outer Sheath Black PE
- Rugged Double sheath construction
- Horizontal Cabling Networks
- Transmission Of High Speed Data
- Digital and Analog Voice and Video Signals On LANs
- Made In India

**Cat5e UTP, 4 Pair, 24 AWG, Grey, 305m**

- 4 Pair 23 AWG
- UTP FR-PVC Cable
- Horizontal Cabling Networks
- Transmission Of High Speed Data
- Digital and Analog
- Voice and Video Signals On LANs
- Made In India

**Cat5e SFTP, 4 Pair, 24 AWG, Grey, 305m**

- 4 Pair 24 AWG
- SFTP FR-PVC Cable
- Horizontal Cabling Networks
- Transmission Of High Speed Data
- Digital and Analog
- Voice and Video Signals On LANs
- Made In India



KEYSTONES

Cat6 UTP, 180°, Collapsible Door, Punch Down Type

- Small & Exquisite form Factor
- Skilled Design on Jack and PCB
- High and Reliable Performance
- Ergonomic Design & Easy Termination
- Support Both R11 and R12 Plug
- With Collapsible Shutter
- 25 microns Gold Plated Contact pins
- Made in India
- Available in Cat5e, Cat6 and Cat6A

**Cat6 FTP, 180°, Toolless Type**

- Zinc-casted Shell Covered with the Nickel Plating
- Provide Outstanding Performance to Outside EMI
- Skilled Design on Jack and PCB
- High and Reliable Performance
- Ergonomic Design and Easy Termination
- Available in Cat5e and Cat6A

**Cat6A FTP, 180°, Toolless Type**

- Zinc-casted Shell Covered with the Nickel Plating
- Provide Outstanding Performance to Outside EMI
- Skilled Design on Jack and PCB
- High and Reliable Performance
- Ergonomic Design and Easy Termination
- Available in Cat5e and Cat6



PATCH PANELS

Cat6A UTP, 24 Port, 90°

- 90 Degree (Top Entry) Punch Down Design
- Built in Rear Cable Management
- 6x4 Module Specially Designed Jack Configuration
- 1U Patch Panel to Mount in any Standard Rack
- Easy Port Labeling Identification Provision
- Accommodates 22~26 AWG Stranded and Solid Wires
- Made In India

**Cat6A UTP, 24 Port, 180°**

- 180 Degree Punch Down Design
- 1U Patch Panel to Mount in any Standard Rack
- Easy Port Labeling Identification Provision
- Accommodates 22~26 AWG Stranded and Solid Wires

**Cat6A FTP, 24 Port, 90°**

- 90 Degree (Top Entry) Punch Down Design
- Removable Module Design
- 6x4 Module Specially Designed Jack Configuration
- 1U Patch Panel to Mount in any Standard Rack
- Easy Port Labeling Identification Provision
- Accommodates 22~26 AWG Stranded and Solid Wires
- Made In India

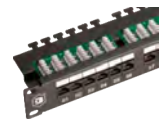


COPPER SOLUTIONS

PATCH PANELS

Cat6 UTP, 24 Port, 90°

- 90 Degree (Top Entry) Punch Down Design
- Built in Rear Cable Management
- 6x4 Module Specially Designed Jack Configuration
- 1U Patch Panel to Mount in any Standard Rack
- Easy Port Labeling Identification Provision
- Accommodates 22~26 AWG Stranded and Solid Wires
- Made In India

**Cat6 UTP, 24 Port, 180°**

- 180 Degree Punch Down Design
- 1U Patch Panel to Mount in any Standard Rack
- Easy Port Labeling Identification Provision
- Accommodates 22~26 AWG Stranded and Solid Wires

**Cat5e UTP, 24 Port, 90°**

- 90 Degree (Top Entry) Punch Down Design
- Built in Rear Cable Management
- 6x4 Module Specially Designed Jack Configuration
- 1U Patch Panel to Mount in any Standard Rack
- Easy Port Labeling Identification Provision
- Accommodates 22~26 AWG Stranded and Solid Wires
- Made In India

**Cat5e UTP, 24 Port, 180°**

- 180 Degree Punch Down Design
- 1U Patch Panel to Mount in any Standard Rack
- Easy Port Labeling Identification Provision
- Accommodates 22~26 AWG Stranded and Solid Wires



PATCH CORDS

Cat6A UTP, LSZH

- Available in LSZH Sheath Jacket- Reduced Toxic Gasses Emitted During Combustion
- RJ45, 8P8C, 2 FORK 50µ" Gold Plated Contacts
- 100% Factory Tested
- Transparent Boot Cable Assemblies
- Made In India

**Cat6A STP, LSZH**

- Available in LSZH Sheath Jacket- Reduced Toxic Gasses Emitted During Combustion
- RJ45, 8P8C, 2 Fork 50µ" Gold Plated Contacts
- 100% Factory Tested
- Shielded Plug Boot Cable Assemblies
- Provides Better Mechanical Properties
- Made In India

**Cat6 STP, LSZH**

- Available in LSZH Sheath Jacket- Reduced Toxic Gasses Emitted During Combustion
- RJ45, 8P8C, 2 Fork 50µ" Gold Plated Contacts
- 100% Factory Tested
- Shielded Plug Boot Cable Assemblies
- Provides Better Mechanical Properties
- Made In India

**Cat5e UTP, LSZH**

- Available in LSZH Sheath Jacket- Reduced Toxic Gasses Emitted During Combustion
- RJ45, 8P8C, 2 FORK 50µ" Gold Plated Contacts
- 100% Factory Tested
- Transparent Boot Cable Assemblies
- Made In India

**Cat5e STP, LSZH**

- Available in LSZH Sheath Jacket- Reduced Toxic Gasses Emitted During Combustion
- RJ45, 8P8C, 2 FORK 50µ" Gold Plated Contacts
- 100% Factory Tested
- Shielded Plug Boot Cable Assemblies
- Provides Better Mechanical Properties
- Made In India



UNLOADED

Two Piece Single Port, Face Plate Modular Straight Shuttered

- Two Piece design
- Shutter on Face Plate
- Elegant hidden-screw design
- Made In India

**Two Piece Dual Port, Face Plate Modular Straight Shuttered**

- Two Piece design
- Shutter on Face Plate
- Elegant hidden-screw design
- Made In India

**Two Piece Quad Port, Face Plate Modular Straight Shuttered**

- Two Piece design
- Shutter on Face Plate
- Elegant hidden-screw design
- Made In India

**One Piece Single Port, Face Plate**

- One Piece design
- Screw caps to hide screws
- Made In India

**One Piece Dual Port, Face Plate**

- One Piece design
- Screw caps to hide screws
- Made In India

**One Piece Quad Port, Face Plate**

- One Piece design
- Screw caps to hide screws
- Made In India



COPPER SOLUTIONS

UNLOADED

Unloaded UTP, 24 Port, Patch Panel

- Front Removable Module Design
- 1U Patch Panel to Mount in any Standard Rack
- Easy Port Labeling Identification Provision
- 1U Patch Panel to Mount in any Standard Rack
- Accommodates 22~26 AWG Stranded and Solid Wires

**Unloaded UTP, 24 Port, Angled Blank Patch Panel**

- Front Removable Module Design
- 1U Patch Panel to Mount in any Standard Rack
- Easy Port Labeling Identification Provision
- Accommodates 22~26 AWG Stranded and Solid Wires
- Compatible with Standard Sized Keystone Jacks

**Unloaded Surface Mount Box**

- Robust and installer friendly design
- Secure and protect your wire with our durable wall box
- Easy to install



TOOLS

Unloaded Surface Mount Box, Concealed Type

- Robust and installer friendly design
- Secure and protect your wire with our durable wall box
- Easy to install
- Concealed Type

**Tool Cable Stripper with Cutter for Lan (UTP/STP)**

- Light weight, compact stripper, simple to operate
- Strips UTP /STP wire and multi conductor cable dimension
- Uses adjustable knob for setting different insulation diameters
- Provides with cable cutting function

**Tool Impact Tool with Blades for 110 & Krone IDC**

- Impact Tool with interchangeable blades
- 110, 66 Block and Krone/ADC formats and blades
- User adjustable impact force with dial in the handle
- Extra Blade Storage in handle
- Heavy Duty

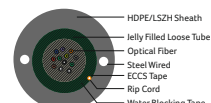


FIBER SOLUTIONS

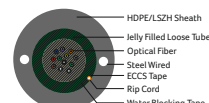
CABLES

Unitube Single Mode Armoured Cable

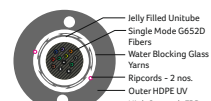
- Suitable for Outdoor Network Direct Burial
- Polyester based yarns below Armour tape for easy ripping
- Thermoplastic Material Tube
- Excellent Water Proof Layer and Moisture Resistance
- Excellent Crush Resistance Performance

**Unitube Multi-Mode Armoured Cable**

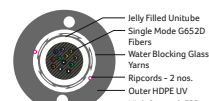
- Suitable for Outdoor Network Direct Burial
- Polyester based yarns below Armour tape for easy ripping
- Thermoplastic Material Tube
- Excellent Water Proof Layer and Moisture Resistance
- Excellent Crush Resistance Performance

**Unitube Single Mode Un-armoured Cable**

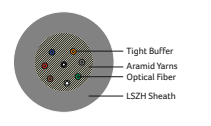
- Suitable for Outdoor Network Direct Burial
- Un-Armoured design with High Strength FRP's & Glass Rovings
- Thermoplastic Material Tube
- Excellent Water Proof Layer and Moisture Resistance
- Excellent Crush Resistance Performance

**Unitube Multi-Mode Un-armoured Cable**

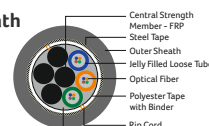
- Suitable for Outdoor Network Direct Burial
- Un-Armoured design with High Strength FRP's & Glass Rovings
- Thermoplastic Material Tube
- Excellent Water Proof Layer and Moisture Resistance
- Excellent Crush Resistance Performance

**Tight-Buffered Single Mode and Multi-Mode Cable**

- Suitable for aerial, Pipeline, Bracket Lying
- Suitable for Indoor and Outdoor Applications
- All Dielectric self supporting ADSS
- Polyester based yarns tape for easy ripping
- Excellent Crush Resistance Performance

**Multi-tube Single Sheath Armoured Cable**

- Suitable for Outdoor Network Direct Burial
- Polyester based yarns below Armour tape for easy ripping
- Thermoplastic Material Tube
- Core covering Polyester Binder and Polyester tape
- Excellent Water Proof Layer and Moisture Resistance
- Excellent Crush Resistance Performance

**Multi-tube Double Sheath Armoured Cable**

- Suitable for Outdoor Network Direct Burial
- Polyester based yarns below Armour tape for easy ripping
- Thermoplastic Material Tube
- Core covering Polyester Binder and Polyester tape
- Excellent Water Proof Layer and Moisture Resistance
- Excellent Crush Resistance Performance

