

[How to secure the wireless network on DG-BG4100NU?](#)

STEP 1: ACCESSING THE WEB CONFIGURATION PAGE OF THE ROUTER

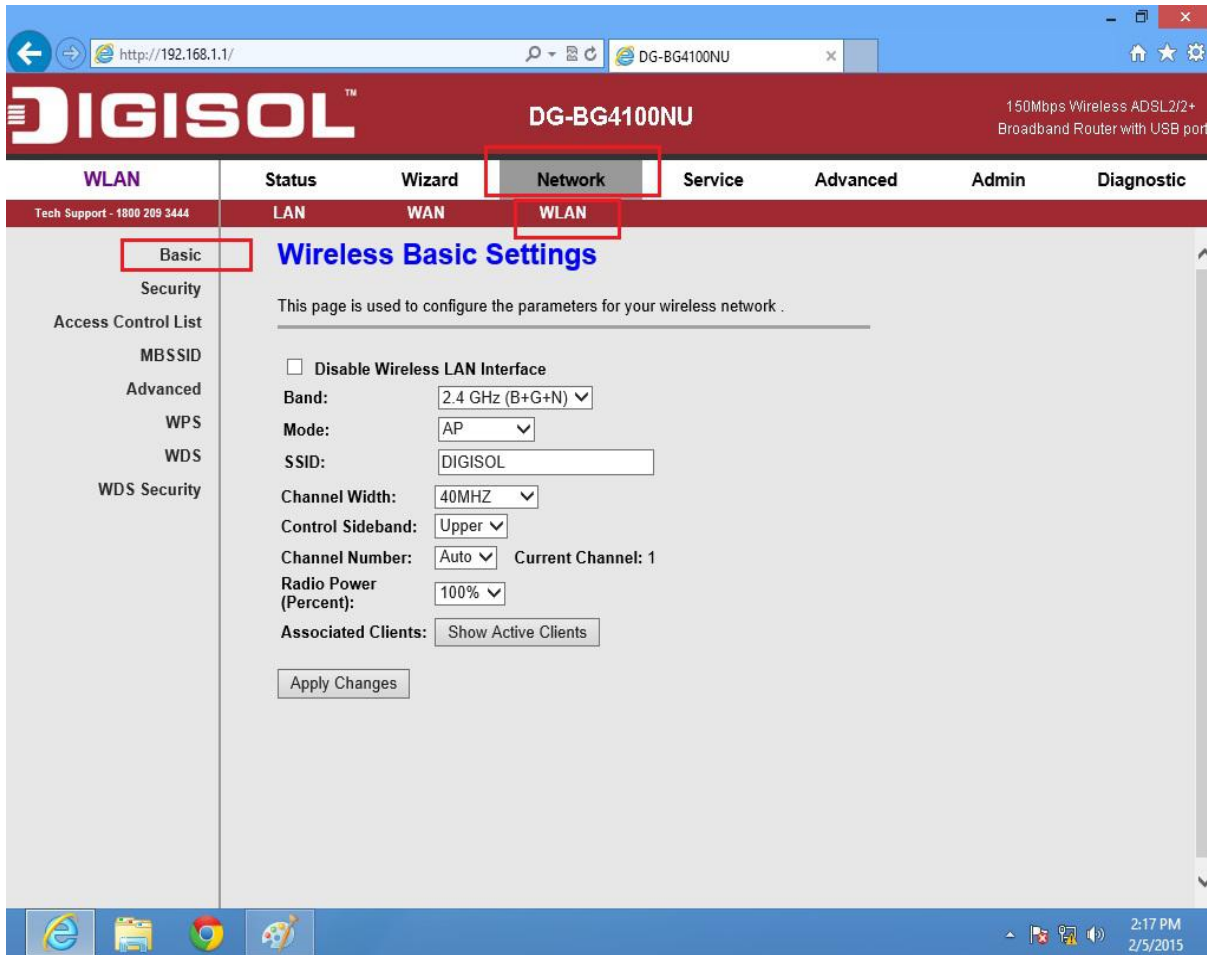
Open the configuration page of the router by typing <http://192.168.1.1> in a web browser. We recommend this one time configuration to be done using [Internet Explorer](#).

Enter the username as [admin](#) and password as [admin](#) and click on OK.



STEP 2: CONFIGURE WIRELESS SETTINGS

Click on [Network > WLAN](#). Then click on [Basic](#) on the left hand side.



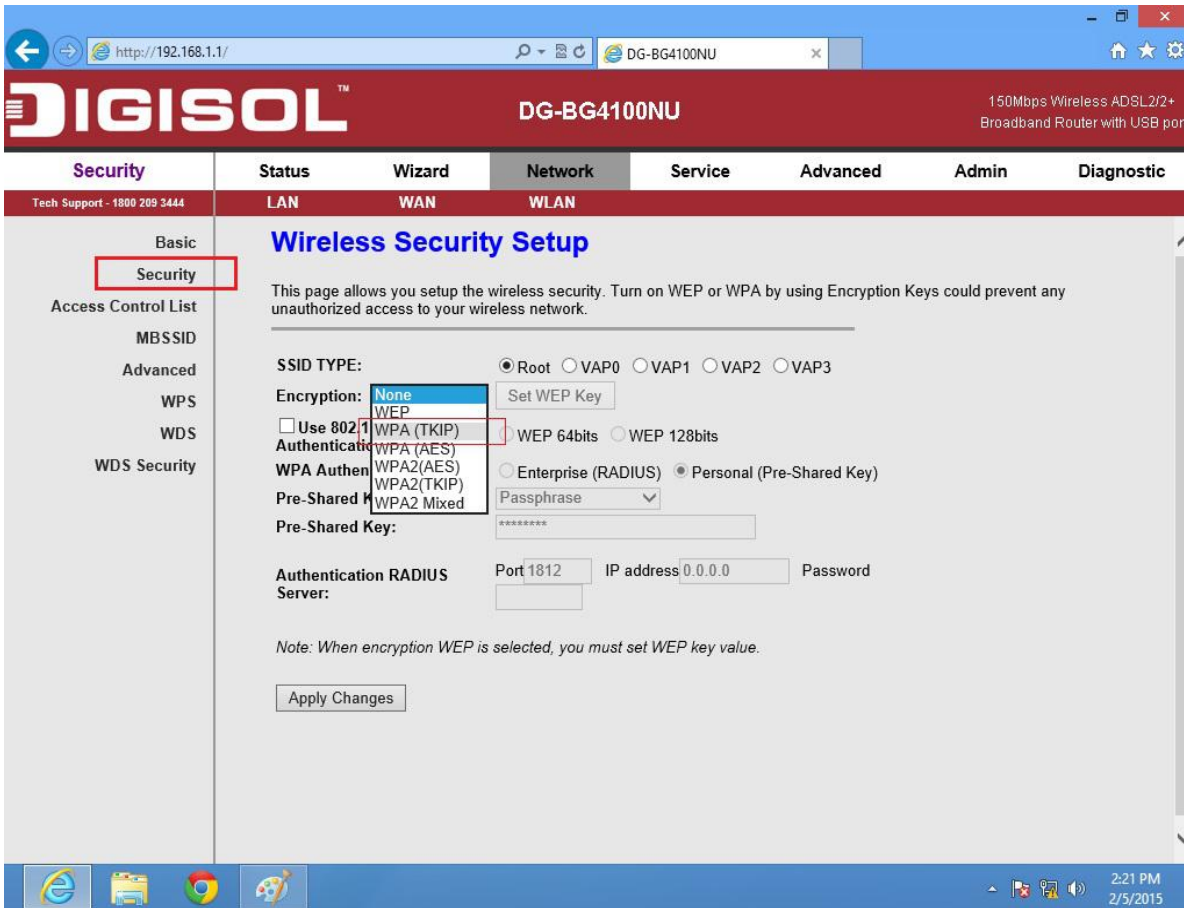
The screenshot shows the DIGISOL DG-BG4100NU web interface. The browser address bar shows <http://192.168.1.1/>. The page title is "DIGISOL™ DG-BG4100NU" and the subtitle is "150Mbps Wireless ADSL2/2+ Broadband Router with USB port". The navigation menu includes "WLAN", "Status", "Wizard", "Network", "Service", "Advanced", "Admin", and "Diagnostic". The "WLAN" section is expanded, showing "LAN", "WAN", and "WLAN". The "WLAN" section is further expanded to show "Basic", "Security", "Access Control List", "MBSSID", "Advanced", "WPS", "WDS", and "WDS Security". The "Basic" tab is selected, displaying the "Wireless Basic Settings" page. The page content includes a checkbox for "Disable Wireless LAN Interface", a "Band" dropdown set to "2.4 GHz (B+G+N)", a "Mode" dropdown set to "AP", an "SSID" text field containing "DIGISOL", a "Channel Width" dropdown set to "40MHZ", a "Control Sideband" dropdown set to "Upper", a "Channel Number" dropdown set to "Auto" with "Current Channel: 1" displayed, a "Radio Power (Percent)" dropdown set to "100%", and an "Associated Clients" button labeled "Show Active Clients". An "Apply Changes" button is located at the bottom of the settings area.

Under [Wireless Basic Settings](#), change the **SSID**. It is your wireless network name.

Click on [Apply Changes](#).

STEP 3: CONFIGURE WIRELESS SECURITY

Click on [Security](#) on the left hand side.



The screenshot displays the DIGISOL DG-BG4100NU web interface. The browser address bar shows <http://192.168.1.1/>. The page title is "DIGISOL™ DG-BG4100NU" and the subtitle is "150Mbps Wireless ADSL2/2+ Broadband Router with USB port".

The navigation menu includes: Security, Status, Wizard, Network, Service, Advanced, Admin, and Diagnostic. Under the "Network" tab, the "WLAN" sub-tab is selected.

The left sidebar contains the following menu items: Basic, Security (highlighted with a red box), Access Control List, MBSSID, Advanced, WPS, WDS, and WDS Security.

The main content area is titled "Wireless Security Setup". It contains the following text: "This page allows you setup the wireless security. Turn on WEP or WPA by using Encryption Keys could prevent any unauthorized access to your wireless network."

The configuration options are:

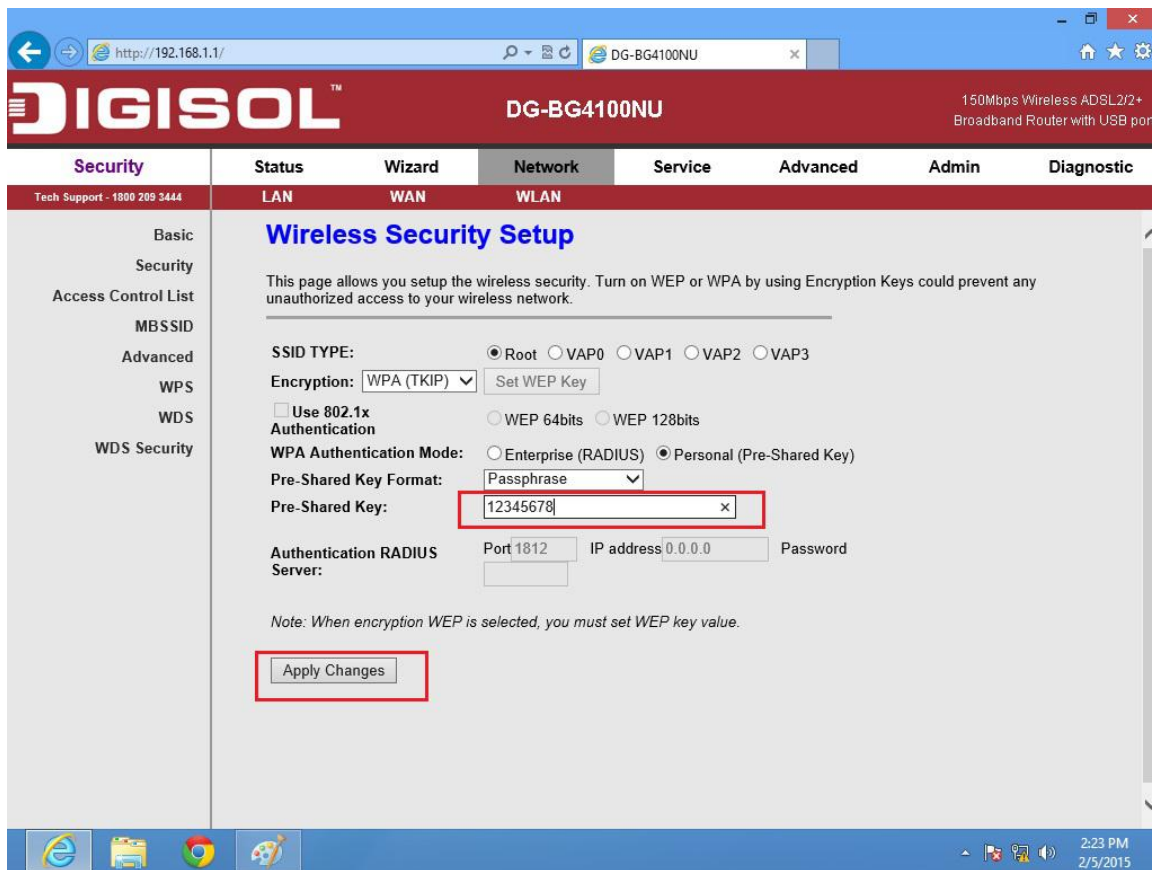
- SSID TYPE: Root VAP0 VAP1 VAP2 VAP3
- Encryption: None WEP WPA (TKIP) WPA (AES) WPA2 (AES) WPA2 (TKIP) WPA2 Mixed
- Use 802.11n:
- WEP: WEP 64bits WEP 128bits
- Authentication: Enterprise (RADIUS) Personal (Pre-Shared Key)
- Pre-Shared Key:
- Authentication RADIUS Server: Port 1812, IP address 0.0.0.0, Password

Note: When encryption WEP is selected, you must set WEP key value.

Apply Changes

Under **SSID TYPE**, select **Root**

Select **Encryption** as **WPA (TKIP)**



Under **Pre-Shared Key format** select **Passphrase**

In **Pre-Shared Key**, enter the new wireless password

Note: Make sure that the Pre-Shared Key is minimum of 8 characters which can be alphanumeric.

Click on **Apply Changes**

Now scan for the wireless networks on your wireless clients e.g. Laptops, smartphones etc. Select your wireless network and try connecting to the network with the password given on the router. Verify the wireless connectivity.