

[HOW TO SECURE WIRELESS NETWORK ON DG-HR3400](#)

STEP 1: ACCESSING THE WEB CONFIGURATION PAGE OF THE ROUTER

Open the configuration page of the router by typing <http://192.168.2.1> in a web browser. We recommend this one time configuration to be done using [Internet Explorer](#).

Enter the username as [admin](#) and password as [1234](#) and click on OK.



STEP 2: CONFIGURE WIRELESS SETTINGS

Click on [Wireless](#) then click on [Wireless Basic](#) on the left hand side.

Under Wireless Settings, Select the mode as **AP** and change the **Name (SSID)** as desired



The screenshot shows the web interface of a DIGISOL DG-HR3400 300Mbps Wireless Broadband Router. The browser window is titled "DG-HR3400 - Windows Internet Explorer" and the address bar shows "http://192.168.2.1/index.htm". The interface has a red header with the DIGISOL logo and the model name "DG-HR3400". Below the header is a navigation menu with tabs: Setup, Wireless, Advanced, Maintenance, Status, and Help. The "Wireless" tab is selected, and the "Wireless Basics" sub-tab is active. The main content area is divided into three sections: "Wireless Basics", "Wireless Settings", and "Wireless Network".

Wireless Basics

This page is used to configure the parameters for wireless LAN clients which may connect to your Access Point. Here you may change wireless encryption settings as well as wireless network parameters.

Wireless Settings

Mode: AP

Wireless Network

Enable SSID Broadcast:

Enable Wireless Isolation:

Name(SSID): DIGISOL

Mode: 802.11b/g/n

Channel: 6 Current Channel: 6

Band Width: Auto 20/40M

Security Options

Security Options: None

Buttons: Apply, Cancel

Helpful Hints...

NOTE: To ensure proper agency compliance and compatibility between similar products in your area, the operating channel and region must be set correctly.

Placement of the Router to Optimize Wireless Connectivity

The operating distance or range of your wireless connection can vary significantly based on the physical placement of the router. For best results, place your router:

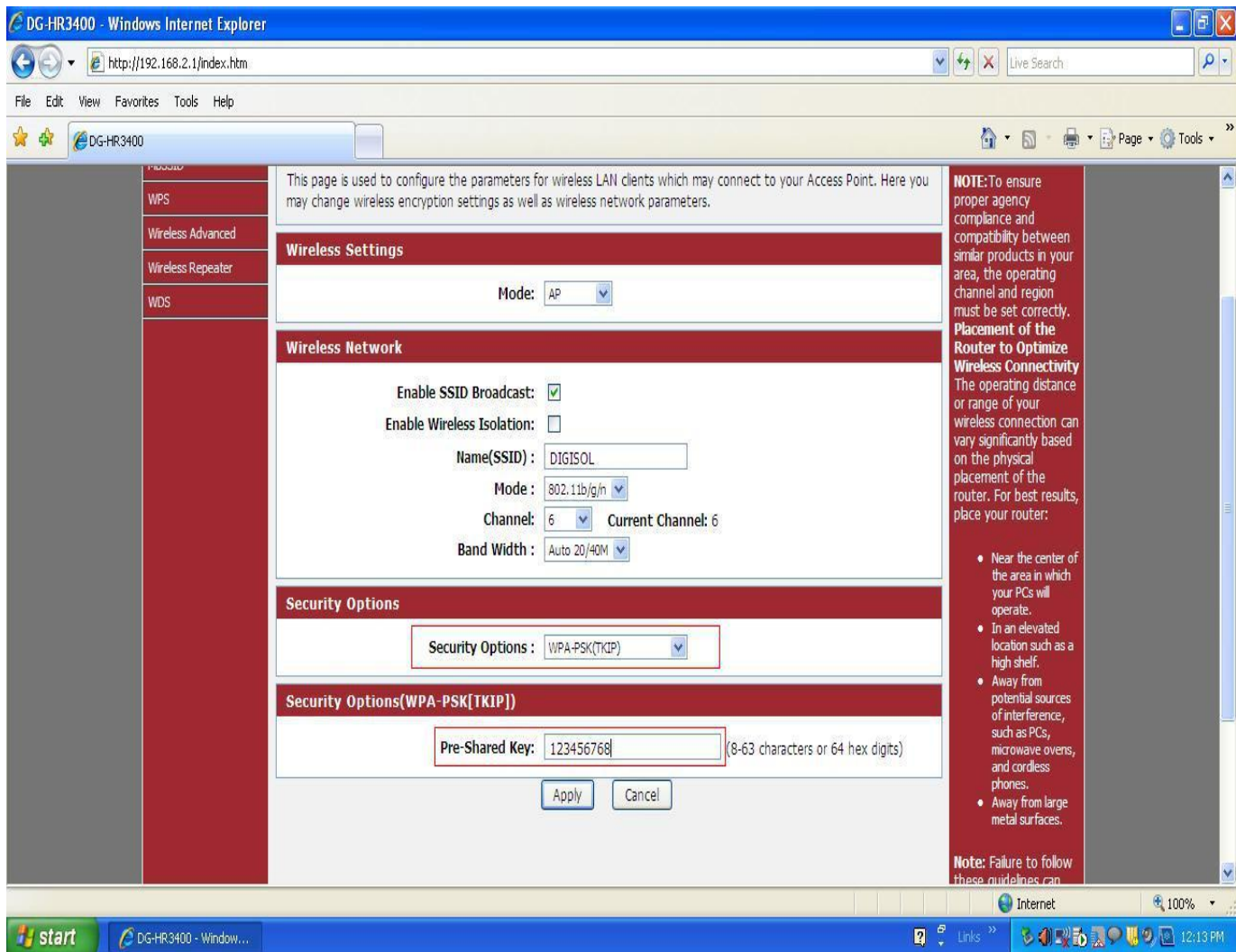
- Near the center of the area in which your PCs will operate.
- In an elevated location such as a high shelf.
- Away from potential sources

Once the SSID is changed > Under **Security Options** > Select encryption **WPA-PSK(TKIP)**

In **Pre-Shared Key** > Enter the new wireless password

Note: Make sure the Pre-Shared Key should be minimum 8 characters which can be alphanumeric.

Click on **Apply Changes**



Now scan for the wireless networks on your wireless clients e.g. Laptops, smartphones etc. Select your wireless network and try connecting to the network with the password given on the router. Verify the wireless connectivity.