



GET READY TO
EXPERIENCE INNOVATION
AND FUTURE TECH
WITH A TRUE
MADE IN INDIA BRAND



MADE IN INDIA.
MADE FOR INDIA.

 helpdesk@digisol.com

 **1800 209 3444**

www.digisol.com

DIGISOL is a Subsidiary of Smartlink Holdings Limited

STRUCTURED CABLING SYSTEMS | FTTH SOLUTIONS | SWITCHING SOLUTIONS | WIRELESS SOLUTIONS



ABOUT DIGISOL

Digisol believes in building a self-reliant India and the aim is to make India a fast-growing IT networking brand a force to reckon with. Spearheading Government's **Make in India** vision by supporting our country's prospect of an **"AATMANIRBHAR" Bharat**. Digisol, a brand that's known for its strong edifice of values and ethics, also provides high-quality products/services and expanding the possibilities.

Digisol has proven its capabilities in IT and has been digitally empowering businesses with its top-notch Networking solutions for over **3 decades**. Digisol offers a wide range of networking solutions like **Structured Cabling Systems (Copper & Fiber), FTTH, Switching and Wireless solutions**. Offering innovative made in India solutions that we proudly say **"Trusted Provider of IT Networking Solutions"** and it seems that the world is more than ready to embrace this vision, which is already set on a path to become a reality.

- ▶ 3 Decades of experience in manufacturing
- ▶ The plants are ISO 9001:2008, AS 9100:2009 and ISO 14001:2004 certified
- ▶ Consists of a total of 5 plants covering 140,000 Sq ft of production shop floor area with SMT and Through-hole Lines
- ▶ Process Capability of Manufacturing of RoHS Products
- ▶ Statistical Quality Assurance

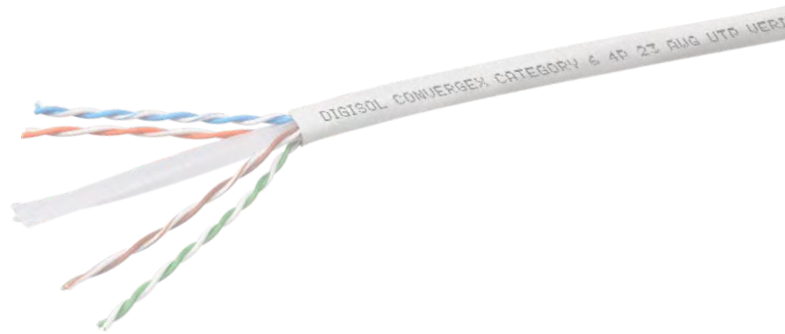
INDEX

Digisol ConvergeX Range - Enterprise Structured Cabling Systems



COPPER

👉 Solid Cables.....	05
👉 Keystones.....	06
👉 Patch Panels.....	07
👉 Patch Cords.....	08
👉 Industrial Field Plugs.....	09
👉 IP Rated Patch Cords.....	09



Digisol Structured Cabling Systems



COPPER

👉 Solid Cables.....	11
👉 Keystones.....	12
👉 Solderless Keystone	13
👉 Solderless Patch Panels	13
👉 Patch Panels.....	14
👉 Patch Cords	16

Unloaded

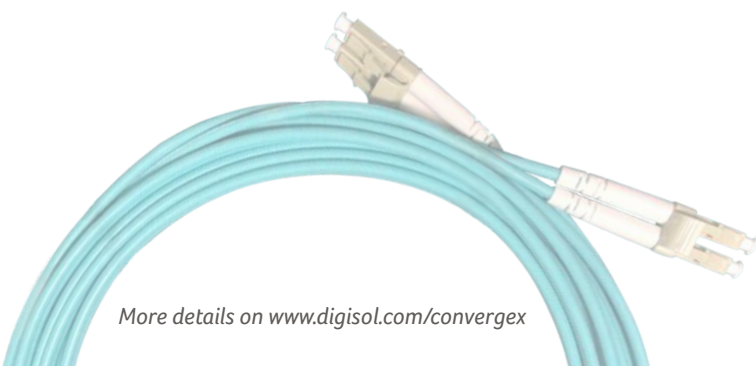
👉 Face Plates	17
👉 Patch Panels	18
👉 Surface Mount Box	18
👉 Tools	18

FIBER

👉 Cables.....	19
👉 Patch Cords.....	21
👉 Pigtails.....	21
👉 LIUs	22
👉 Adapters.....	22

FTTH

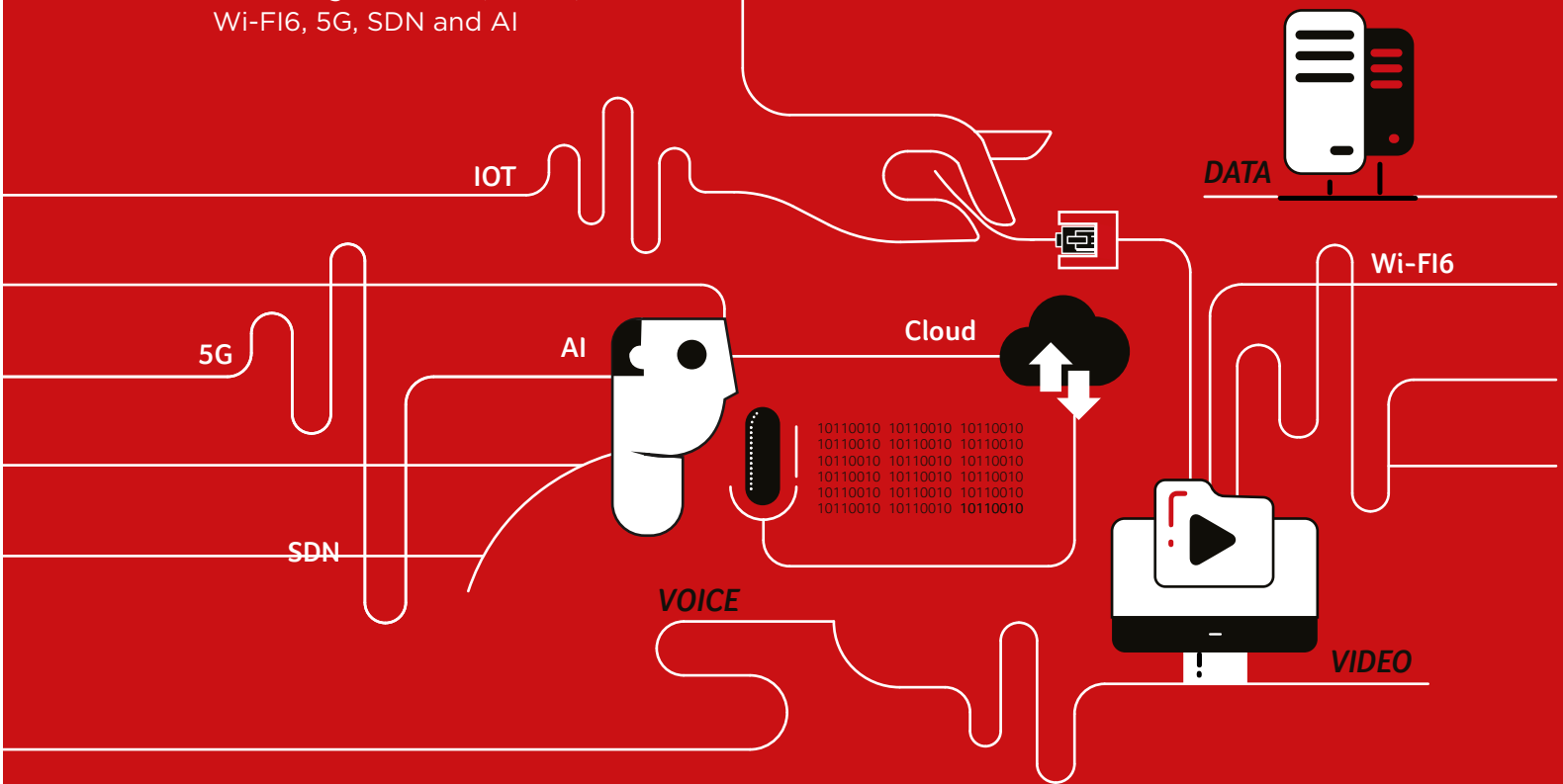
👉 SMC	23
👉 ODFs	23
👉 Splitters.....	23
👉 FDBs	24
👉 Connector	24
👉 Home Termination Box	24
👉 Drop Cable	24



More details on www.digisol.com/convergeX

VOICE VIDEO DATA

A future ready enterprise is equipped with a structured cabling infrastructure that converges voice, video, data at Xtreme performance for cutting edge, advanced technologies like IOT, Cloud, Wi-Fi6, 5G, SDN and AI



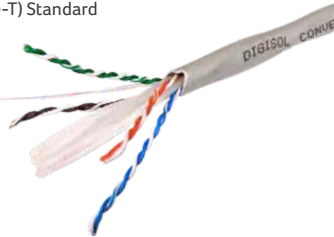
Enterprise Structured Cabling

COPPER **SOLID CABLES**

SOLID CABLE, CAT6A UTP, 4 PAIR, 23 AWG, OVAL SHAPE, GREY, 305M

Reduces Alien cross talk with unique oval design and pair locking cross-filler

- Designed for Horizontal
- Cabling Networks for Transmission of High Speed Data, Digital and Analog, Voice and Video Signals On Lans
- Supports Gigabit Ethernet (10 GBase-T) Standard
- Suitable for Noisy Environments, High EMI Interference Surroundings
- Complies to the Requirement of ANSI/TIA-568-C.2 and ISO/IEC 11801
- Bandwidth Performance Upto 600MHz



SOLID CABLE, CAT6 UTP, 4 PAIR, 0.55 MM, GREY, 305M

Higher bandwidth better performance

- For Data Centre Applications
- High bandwidth upto 600 MHz
- 4 Pair 23 AWG
- Available in FRPVC/LSZH jacket
- High speed transmission of Voice, Video and Data on LAN
- Also available in Blue colour



3 Decades of experience in manufacturing

• More details on www.digisol.com/convergenx

Enterprise Structured Cabling

COPPER KEYSTONES

SOLDERLESS KEYSTONES

CAT6 UTP SOLDERLESS KEYSTONE TOOLLESS

Efficient Rotation Design Tool Free, Press with Click to Terminate Wires

- Fully (360 degree) covered in 30 microns Gold plated Contact pins which are assembled with Solderless process
- Cable Holder with Strain Relief function **Fast, Easy, Reliable Termination**
- **Patented Toolless type** design with contact pins assembled with Solder-less Press-fit process
- **No oxidation** of Contact pins due to absence of soldering flux leading to longer life
- High impact **Polycarbonate Grade plastic**, UL-94V-0 rated
- Removable shutter option
- Supports both RJ11/RJ12 plug
- Plug Insertion Life : 750 Cycles minimum
- Available in Cat 5E, CAT 6 and CAT 6A

Contact pins assembled by **SOLDER-LESS PRESS-FIT PROCESS**

Toolless Termination with just a click !

360° FULLY GOLD PLATED Contact pins



TOOLLESS CLASS EA/ CAT6A STP KEYSTONE JACK (AUTO PRESS FIT)

Auto press fit keystone with cable management

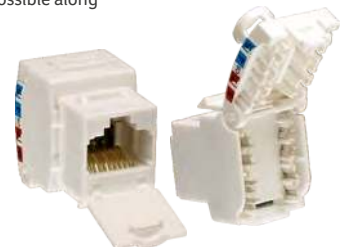
- RJ-45 Industrial Field plugs for field terminations
- CAT6A rated
- 360 degrees connection option available
- 8 different locking angle positions possible along the 360 degree path
- High impact flame retardant plastic
- PoE+ ready
- Accept Cable : #26~22 AWG solid/ 7 stranded wire



TOOLLESS CLASS EA/ CAT6A UTP KEYSTONE JACK (AUTO PRESS FIT)

Auto press fit keystone with cable management

- RJ-45 Industrial Field plugs for field terminations
- CAT6A rated
- 360 degrees connection option available
- 8 different locking angle positions possible along the 360 degree path
- High impact flame retardant plastic
- PoE+ ready
- Accept Cable : #26~22 AWG solid/ 7 stranded wire



The plants are ISO 9001:2008, AS 9100:2009 and ISO 14001:2004 certified

Enterprise Structured Cabling

COPPER PATCH PANELS

SOLDERLESS PATCH PANEL

24 PORT CAT6 UTP 90°

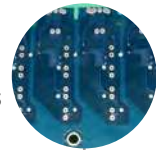
CAT6 patch panel with CAT6A performance

- Contacts pins assembled in **Patented PCBs** by Solder-less process leading to higher efficiency
- Flexible Square Contact pins, with 360 degree covered in 30 microns Gold plating, better for POE Application
- IDC accommodates **22~26 AWG** Stranded and Solid wires
- **No oxidation** of contact pins due to absence of soldering flux leading to longer life
- Higher performance with **better transmission** at electron level
- 6 Port Jack configuration specially designed & molded in Polycarbonate **Fire retardant material** and Removable Module Design
- **90 Degree Punch-Down design** for easy assembly on site
- Exceeds ANSI/TIA 568-C.2 standard, and supports 1000-BASE-T
- 1U Patch Panel to mount In any Standard Rack

Top Entry Punch Down design with Removable Modules



Contact pins assembled on Patented PCBs by SOLDER-LESS PRESS-FIT PROCESS



360° FULLY GOLD PLATED Contact pins

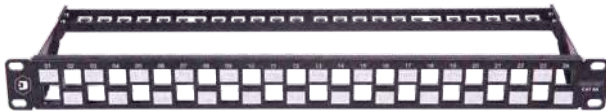


STAGGERED PATCH PANEL

24 PORT CAT6A UTP 180°

Unique Staggered Design for better control on Alien cross talk

- Staggered ports for CAT6A patch panel to eliminate alien crosstalk
- Powder Coated body
- Efficient Cable management
- Ideal patch panel for high end Data Centre infrastructure



48 PORT 1U PATCH PANEL

CAT6A 48 PORT 1U UTP (LOADED)

Slim and Elegant design for Cat 6A performance

- 48 Port terminations in 1U Size
- Rack Mountable Aluminium body
- Efficient Rear Cable Management
- Perfect Solution for High Density Data Centre Applications



Consists of a total of 5 plants covering 140,000 Sq ft of production shop floor area with SMT and Through-hole Lines

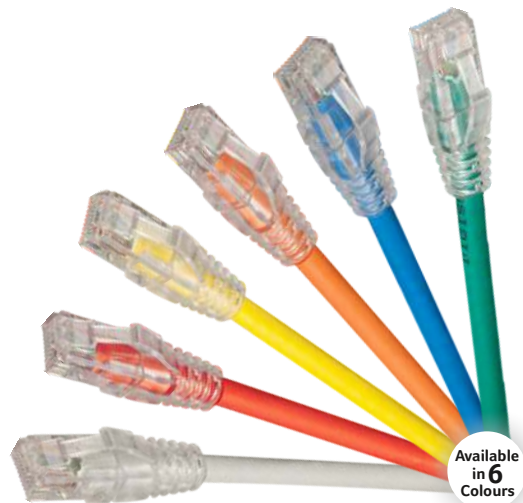
Enterprise Structured Cabling

COPPER PATCH CORDS

CAT6 UTP, LSZH PATCH CORDS

Elegant aesthetic look with transparent boots and better transmission parameters

- Available in LSZH jacket- reduces Toxic gasses emitted during combustion
- RJ45, 8P8C, 3 pronged fork 50µ" gold plated contacts
- 100% factory tested
- Transparent boot cable assemblies
- Available in 5 different colors



Available in 6 Colours



LOCKABLE PATCH CORDS, CAT6, UTP, LSZH

Secured patch cord with locking key for data centre applications

- Comes with lock and key design for data centre security needs
- 24 AWG
- LSZH jacket
- 50 micron gold plated RJ45 contact pins



ULTRA HD PATCH CORDS

Securing network with Ultra High density Patch cords

- UHD Patchcords with Pull-Back Tool
- Arrests data disconnections in high density patch panels due to mishandling.
- Patchcord Jacket is of LSZH material
- Fully (360 deg) plating on Contacts with 50 micron gold for best conductivity performance
- Suitable for Data Centre applications.



Process Capability of Manufacturing of RoHS Products _____

Enterprise Structured Cabling

COPPER INDUSTRIAL FIELD PLUGS

For DGC-RIFSCA-7TC industrial field plug, no cable manager is needed - patch cords can be routed in the design itself due to 8 different lockable positions

- Direct connectivity from switch to the end user's device
- PoE+ compliant
- Toolless termination
- Solderless Process used for assembly fo pins on PCBs leading to longer life and no oxidation due to absent flux



DGC-RJFUCA-3T
INDUSTRIAL FIELD PLUGS CAT 6 UTP,
3 PIECE, 180°, TOOLLESS, POE+



DGC-RJFSCA-5T
INDUSTRIAL FIELD PLUGS CAT 6A STP,
5 PIECE, 180°, TOOLLESS, POE+



DGC-RJFSCA-7TC
INDUSTRIAL FIELD PLUGS CAT 6A STP,
7 PIECE, 360°, TOOLLESS, POE+



INDUSTRIAL PRODUCTS

IP RATED PATCH CORDS

Protect your connections with IE series products

- Available in Patchcords, Keystones and Cable Termination Modules
- IP Rated products
- Preferable for Field Applications where external factors are in force
- Also compliant for Chemical industries.



IP RATED PATCH CORDS

Protect your connections with IE series products

- Available in Patchcords, Keystones and Cable Termination Modules
- IP Rated products
- Preferable for Field Applications where external factors are in force
- Also compliant for Chemical industries.

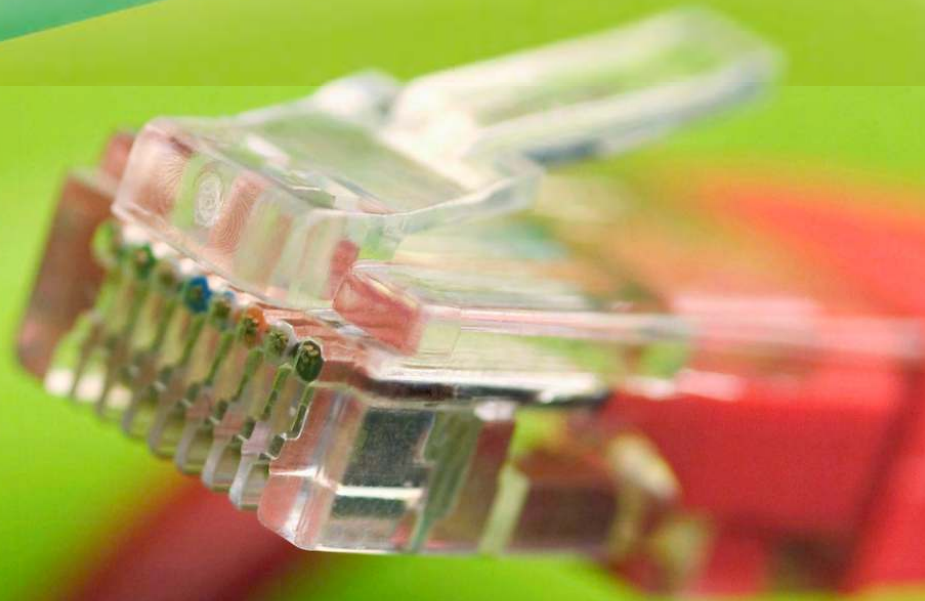
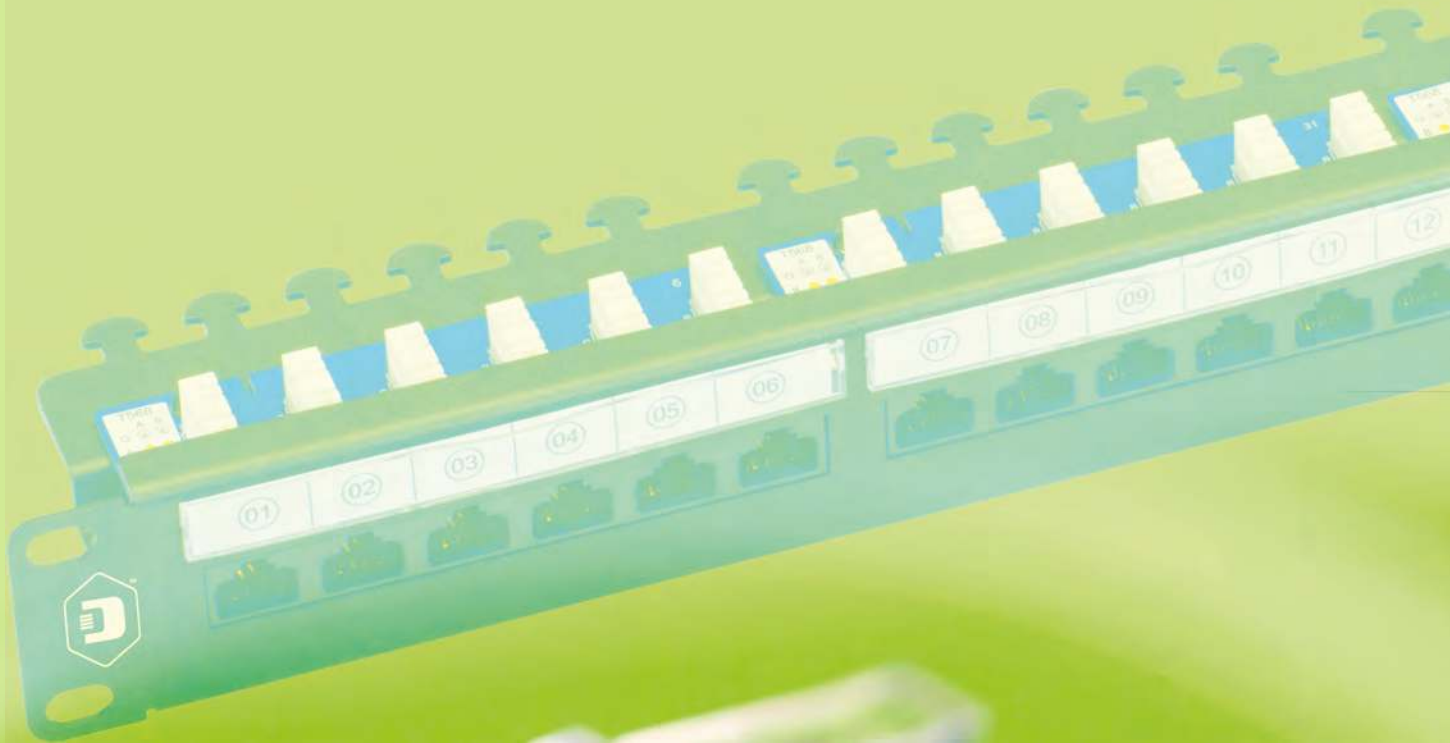


Statistical Quality Assurance

STRUCTURED CABLING SYSTEMS



DIGISOL[®]
STRUCTURED CABLING



Channel Structured Cabling

COPPER SOLID CABLES

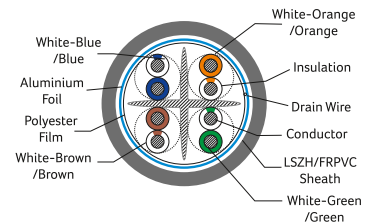
CAT6A UTP, 4 PAIR, 23 AWG, GREY, 305M SOLID CABLE

- 4 Pair 23 AWG
- UTP FR-PVC Cable
- Horizontal Cabling Networks
- Transmission Of High Speed Data
- Digital and Analog
- Voice and Video Signals On LANs



CAT6A FTP, 4 PAIR, 23 AWG, GREY, 305M SOLID CABLE

- 4 Pair 23 AWG
- FTP FR-PVC Cable
- Horizontal Cabling Networks
- Transmission Of High Speed Data
- Digital and Analog
- Voice and Video Signals On LANs



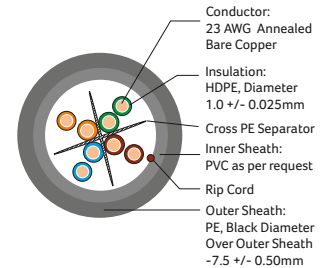
CAT6 UTP, 4 PAIR, 23 AWG, GREY, 305M SOLID CABLE

- 4 Pair 23 AWG
- UTP FR-PVC Cable
- Horizontal Cabling Networks
- Transmission Of High Speed Data
- Digital and Analog
- Voice and Video Signals On LANs



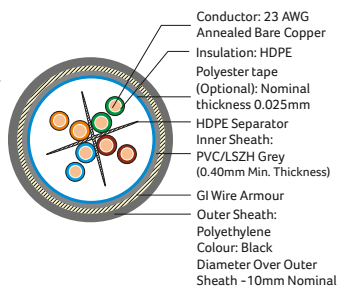
CAT6 UTP, OUTDOOR DOUBLE JACKET, 4 PAIR, 23 AWG, BLACK, 305M SOLID CABLE

- 4 Pair 23 AWG
- UTP FR-PVC Cable
- Inner Sheath PVC & Outer Sheath Black PE
- Rugged Double sheath construction
- Horizontal Cabling Networks
- Transmission Of High Speed Data
- Digital and Analog Voice and Video Signals On LANs



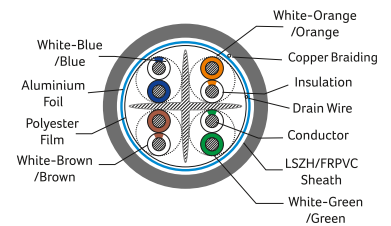
CAT6 UTP, OUTDOOR ARMoured CABLE, 4 PAIR, 23 AWG, BLACK, 305M

- 4 Pair 23 AWG
- UTP FR-PVC Cable
- Inner Sheath PVC, ECCS Tape Armour With Outer Sheath Black PE
- Rugged Double sheath construction
- Horizontal Cabling Networks
- Transmission Of High Speed Data
- Digital and Analog Voice and Video Signals On LANs



CAT6 SFTP, 4 PAIR, 23 AWG, GREY, 305M SOLID CABLE

- 4 Pair 23 AWG
- SFTP FR-PVC Cable
- Horizontal Cabling Networks
- Transmission Of High Speed Data
- Digital and Analog
- Voice and Video Signals On LANs



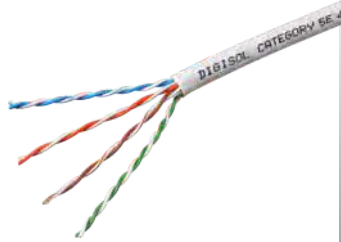
3 Decades of experience in manufacturing

Channel Structured Cabling

COPPER SOLID CABLES

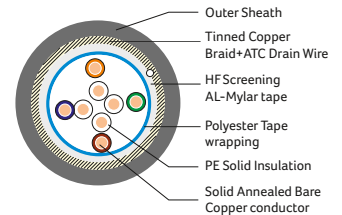
CAT5E UTP, 4 PAIR, 24 AWG, GREY, 305M SOLID CABLE

- 4 Pair 23 AWG
- UTP FR-PVC Cable
- Horizontal Cabling Networks
- Transmission Of High Speed Data
- Digital and Analog
- Voice and Video Signals On LANs



CAT5E SFTP, 4 PAIR, 24 AWG, GREY, 305M SOLID CABLE

- 4 Pair 24 AWG
- SFTP FR-PVC Cable
- Horizontal Cabling Networks
- Transmission Of High Speed Data
- Digital and Analog
- Voice and Video Signals On LANs



COPPER KEYSTONES

CAT6A FTP, 180°, TOOLLESS TYPE KEYSTONE

- Zinc-casted Shell Covered with the Nickel Plating
- Provide Outstanding Performance to Outside EMI • Secures Data
- Skilled Design on Jack and PCB
- High and Reliable Performance
- Ergonomic Design and Easy Termination
- Available in Cat5e and Cat6



CAT6 FTP, 180°, TOOLLESS TYPE KEYSTONE

- Zinc-casted Shell Covered with the Nickel Plating
- Provide Outstanding Performance to Outside EMI • Secures Data
- Skilled Design on Jack and PCB
- High and Reliable Performance
- Ergonomic Design and Easy Termination
- Available in Cat5e and Cat6A



CAT6 UTP, 180°, COLLAPSIBLE DOOR, PUNCH DOWN TYPE KEYSTONE

- Small & Exquisite form factor
- Skilled Design on Jack and PCB
- High and Reliable Performance
- Ergonomic Design & Easy Termination
- Support Both RJ11 and RJ12 Plug
- With Collapsible Shutter
- 25 microns Gold Plated Contact pins
- Available in Cat5e, Cat6 and Cat6A



CAT6 UTP, WITHOUT DOOR KEYSTONE

- Small & Exquisite form factor
- Skilled Design on Jack and PCB
- High and Reliable Performance
- Ergonomic Design & Easy Termination
- Support Both RJ11 and RJ12 Plug
- 25 microns Gold Plated Contact pins
- Available in Cat5e, Cat6 and Cat6A



The plants are ISO 9001:2008, AS 9100:2009 and ISO 14001:2004 certified

Channel Structured Cabling

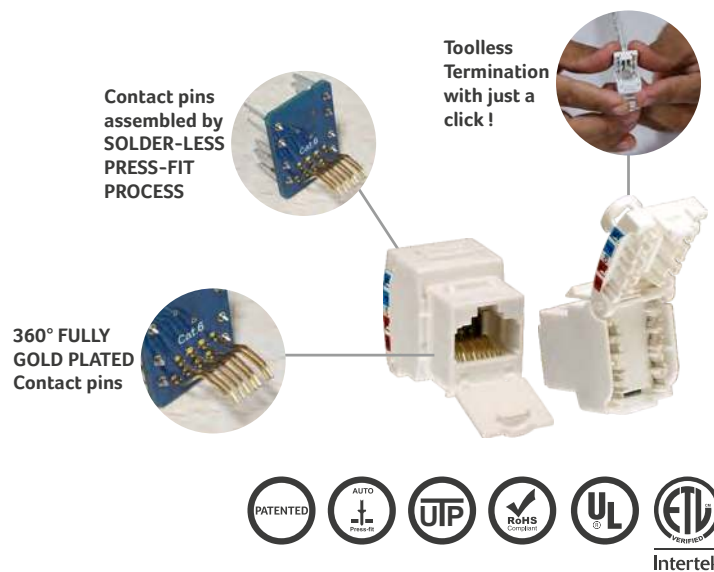
COPPER KEYSTONES

SOLDERLESS KEYSTONES

CAT6 UTP SOLDERLESS KEYSTONE TOOLLESS

Efficient Rotation Design Tool Free, Press with Click to Terminate Wires

- Fully (360 degree) covered in 30 microns Gold plated Contact pins which are assembled with Solderless process
- Cable Holder with Strain Relief function **Fast, Easy, Reliable Termination**
- **Patented Toolless type** design with contact pins assembled with Solder-less Press-fit process
- **No oxidation** of Contact pins due to absence of soldering flux leading to longer life
- High impact **Polycarbonate Grade plastic**, UL-94V-0 rated
- Removable shutter option
- Supports both RJ11/RJ12 plug
- Plug Insertion Life : 750 Cycles minimum
- Available in Cat 5E, CAT 6 and CAT 6A



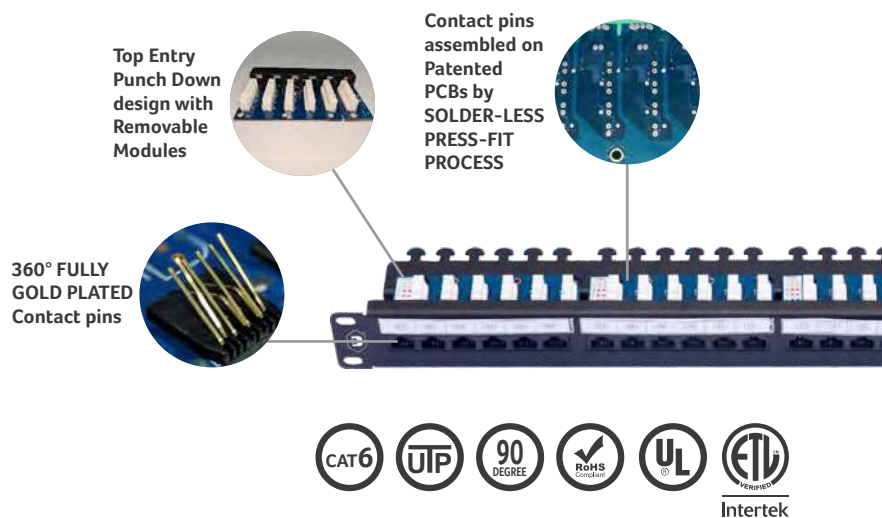
COPPER PATCH PANELS

SOLDERLESS PATCH PANEL

24 PORT CAT6 UTP 90°

CAT6 patch panel with CAT6A performance

- Contacts pins assembled in **Patented PCBs** by Solder-less process leading to higher efficiency
- Flexible Square Contact pins, with 360 degree covered in 30 microns Gold plating, better for POE Application
- IDC accommodates **22~26 AWG** Stranded and Solid wires
- **No oxidation** of contact pins due to absence of soldering flux leading to longer life
- Higher performance with **better transmission** at electron level
- 6 Port Jack configuration specially designed & molded in Polycarbonate **Fire retardant material** and Removable Module Design
- **90 Degree Punch-Down design** for easy assembly on site
- Exceeds ANSI/TIA 568-C.2 standard, and supports 1000-BASE-T
- 1U Patch Panel to mount In any Standard Rack
- Plug Insertion Life : >= 750 Cycles with FCC Compliant RJ-45 Plug



Consists of a total of 5 plants covering 140,000 Sq ft of production shop floor area with SMT and Through-hole Lines

Channel Structured Cabling

COPPER PATCH PANELS

CAT6A UTP, 24 PORT, 90° PATCH PANEL

- 90 Degree (Top Entry) Punch Down Design
- Built in Rear Cable Management
- 6x4 Module Specially Designed Jack Configuration
- 1U Patch Panel to Mount in any Standard Rack
- Easy Port Labeling Identification Provision
- Accommodates 22~26 AWG Stranded and Solid Wires



CAT6A UTP, 24 PORT, 180° PATCH PANEL

- 180 Degree Punch Down Design
- 1U Patch Panel to Mount in any Standard Rack
- Easy Port Labeling Identification Provision
- Accommodates 22~26 AWG Stranded and Solid Wires



CAT6A FTP, 24 PORT, 90° PATCH PANEL

- 90 Degree (Top Entry) Punch Down Design
- Removable Module Design
- 8x3 Module Specially Designed Jack Configuration
- 1U Patch Panel to Mount in any Standard Rack
- Easy Port Labeling Identification Provision
- Accommodates 22~26 AWG Stranded and Solid Wires



CAT6 UTP, 24 PORT, 90° PATCH PANEL

- 90 Degree (Top Entry) Punch Down Design
- Built in Rear Cable Management
- 6x4 Module Specially Designed Jack Configuration
- 1U Patch Panel to Mount in any Standard Rack
- Easy Port Labeling Identification Provision
- Accommodates 22~26 AWG Stranded and Solid Wires



CAT6 UTP, 24 PORT, 180° PATCH PANEL

- 180 Degree Punch Down Design
- 1U Patch Panel to Mount in any Standard Rack
- Easy Port Labeling Identification Provision
- Accommodates 22~26 AWG Stranded and Solid Wires



CAT6 FTP, 24 PORT, 90° PATCH PANEL

- 90 Degree (Top Entry) Punch Down Design
- Removable Module Design
- 8x3 Module Specially Designed Jack Configuration
- 1U Patch Panel to Mount in any Standard Rack
- Easy Port Labeling Identification Provision
- Accommodates 22~26 AWG Stranded and Solid Wires



Process Capability of Manufacturing of RoHS Products

Channel Structured Cabling

COPPER PATCH PANELS

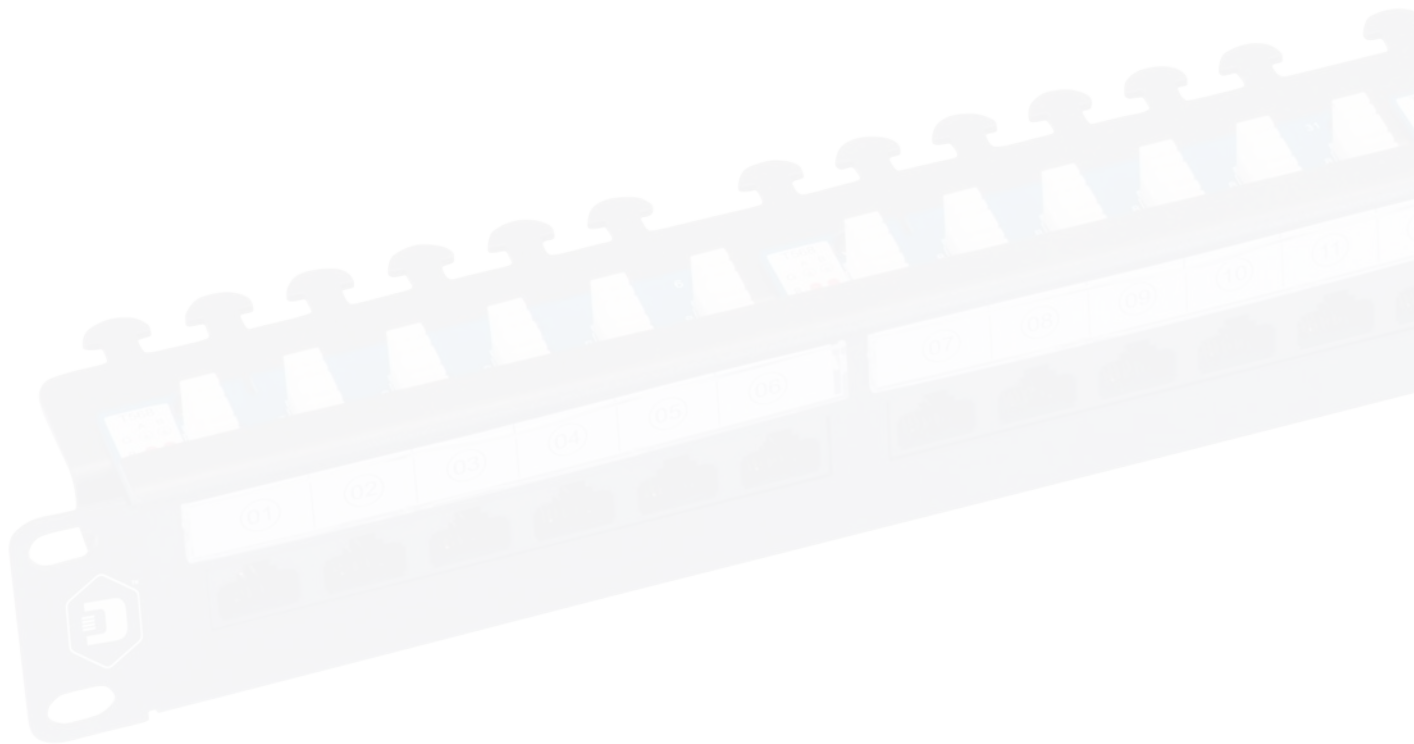
CAT5E UTP, 24 PORT, 90° PATCH PANEL

- 90 Degree (Top Entry) Punch Down Design
- Built in Rear Cable Management
- 6x4 Module Specially Designed Jack Configuration
- 1U Patch Panel to Mount in any Standard Rack
- Easy Port Labeling Identification Provision
- Accommodates 22~26 AWG Stranded and Solid Wires



CAT5E UTP, 24 PORT, 180° PATCH PANEL

- 180 Degree Punch Down Design
- 1U Patch Panel to Mount in any Standard Rack
- Easy Port Labeling Identification Provision
- Accommodates 22~26 AWG Stranded and Solid Wires



Statistical Quality Assurance

Channel Structured Cabling

COPPER PATCH CORDS

CAT6A UTP, LSZH PATCH CORD

- Available in LSZH Sheath Jacket-Reduced Toxic Gasses Emitted During Combustion
- RJ45, 8P8C, 2 FORK 50μ" Gold Plated Contacts
- 100% Factory Tested
- Transparent Boot Cable Assemblies



CAT6A STP, LSZH PATCH CORD

- Available in LSZH Sheath Jacket- Reduced Toxic Gasses Emitted During Combustion
- RJ45, 8P8C, 2 Fork 50μ" Gold Plated Contacts
- 100% Factory Tested
- Shielded Plug Boot Cable Assemblies
- Provides Better Mechanical Properties



CAT6 UTP, LSZH PATCH CORD

- Available in LSZH Sheath Jacket-Reduced Toxic Gasses Emitted During Combustion
- RJ45, 8P8C, 2 FORK 50μ" Gold Plated Contacts
- 100% Factory Tested
- Transparent Boot Cable Assemblies
- Available Colors: Grey, Blue, Green, Yellow, Orange, Red



CAT6 STP, LSZH PATCH CORD

- Available in LSZH Sheath Jacket- Reduced Toxic Gasses Emitted During Combustion
- RJ45, 8P8C, 2 Fork 50μ" Gold Plated Contacts
- 100% Factory Tested
- Shielded Plug Boot Cable Assemblies
- Provides Better Mechanical Properties



CAT5E UTP, LSZH PATCH CORD

- Available in LSZH Sheath Jacket- Reduced Toxic Gasses Emitted During Combustion
- RJ45, 8P8C, 2 FORK 50μ" Gold Plated Contacts
- 100% Factory Tested
- Transparent Boot Cable Assemblies



CAT5E STP, LSZH PATCH CORD

- Available in LSZH Sheath Jacket- Reduced Toxic Gasses Emitted During Combustion
- RJ45, 8P8C, 2 Fork 50μ" Gold Plated Contacts
- 100% Factory Tested
- Shielded Plug Boot Cable Assemblies
- Provides Better Mechanical Properties



3 Decades of experience in manufacturing



Channel Structured Cabling

COPPER UNLOADED FACE PLATE

TWO PIECE SINGLE PORT, FACE PLATE MODULAR STRAIGHT SHUTTERED

- Two Piece design
- Shutter on Face Plate
- Elegant hidden-screw design
- Made In India



TWO PIECE DUAL PORT, FACE PLATE MODULAR STRAIGHT SHUTTERED

- Two Piece design
- Shutter on Face Plate
- Elegant hidden-screw design
- Made In India



TWO PIECE QUAD PORT, FACE PLATE MODULAR STRAIGHT SHUTTERED

- Two Piece design
- Shutter on Face Plate
- Elegant hidden-screw design
- Made In India



ONE PIECE SINGLE PORT, FACE PLATE

- One Piece design
- Screw caps to hide screws
- Made In India



ONE PIECE DUAL PORT, FACE PLATE

- One Piece design
- Screw caps to hide screws
- Made In India



ONE PIECE QUAD PORT, FACE PLATE

- One Piece design
- Screw caps to hide screws
- Made In India



The plants are ISO 9001:2008, AS 9100:2009 and ISO 14001:2004 certified

Channel Structured Cabling

COPPER UNLOADED PATCH PANEL & SURFACE MOUNT BOX

UNLOADED UTP, 24 PORT, PATCH PANEL

- Front Removable Module Design
- 1U Patch Panel to Mount in any Standard Rack
- Easy Port Labeling Identification Provision
- Accommodates 22~26 AWG Stranded and Solid Wires



UNLOADED UTP, 24 PORT, ANGLED BLANK PATCH PANEL

- Front Removable Module Design
- 1U Patch Panel to Mount in any Standard Rack
- Easy Port Labeling Identification Provision
- Accommodates 22~26 AWG Stranded and Solid Wires
- Compatible with Standard Sized Keystone Jacks



UNLOADED SURFACE MOUNT BOX

- Robust and installer friendly design
- Secure and protect your wire with our durable wall box
- Easy to install



UNLOADED SURFACE MOUNT BOX, CONCEALED TYPE

- Robust and installer friendly design
- Secure and protect your wire with our durable wall box
- Easy to install
- Concealed Type



COPPER TOOLS

TOOL CABLE STRIPPER WITH CUTTER FOR LAN (UTP/STP)

- Light weight, compact stripper, simple to operate
- Strips UTP /STP wire and multi conductor cable dimension
- Uses adjustable knob for setting different insulation diameters
- Provides with cable cutting function



TOOL IMPACT TOOL WITH BLADES FOR 110 & KRONE IDC

- Impact Tool with interchangeable blades
- 110, 66 Block and Krone/ADC formats and blades
- User adjustable impact force with dial in the handle
- Extra Blade Storage in handle
- Heavy Duty



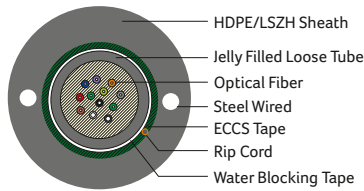
Consists of a total of 5 plants covering 140,000 Sq ft of production shop floor area with SMT and Through-hole Lines

Channel Structured Cabling

FIBER CABLES

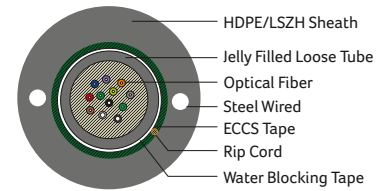
UNITUBE SINGLE MODE ARMoured CABLE

- Suitable for Outdoor Network Direct Burial
- Polyester based yarns below Armour tape for easy ripping
- Thermoplastic Material Tube
- Excellent Water Proof Layer and Moisture Resistance
- Excellent Crush Resistance Performance



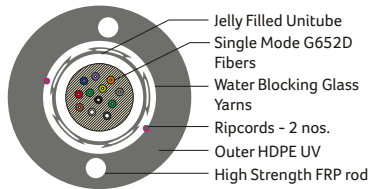
UNITUBE MULTI-MODE ARMoured CABLE

- Suitable for Outdoor Network Direct Burial
- Polyester based yarns below Armour tape for easy ripping
- Thermoplastic Material Tube
- Excellent Water Proof Layer and Moisture Resistance
- Excellent Crush Resistance Performance



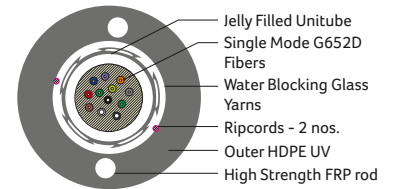
UNITUBE SINGLE MODE UN-ARMoured CABLE

- Suitable for Outdoor Network Direct Burial
- Un-Armoured design with High Strength FRP's & Glass Rovings
- Thermoplastic Material Tube
- Excellent Water Proof Layer and Moisture Resistance
- Excellent Crush Resistance Performance



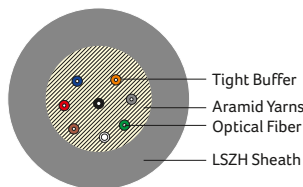
UNITUBE MULTI-MODE UN-ARMoured CABLE

- Suitable for Outdoor Network Direct Burial
- Un-Armoured design with High Strength FRP's & Glass Rovings
- Thermoplastic Material Tube
- Excellent Water Proof Layer and Moisture Resistance
- Excellent Crush Resistance Performance



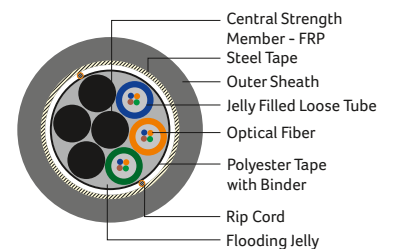
TIGHT-BUFFERED SINGLE MODE AND MULTI-MODE CABLE

- Suitable for aerial, Pipeline, Bracket Lying
- Suitable for Indoor and Outdoor Applications
- All Dielectric self supporting ADSS
- Polyester based yarns tape for easy ripping
- Excellent Crush Resistance Performance



MULTI-TUBE SINGLE SHEATH ARMoured CABLE

- Suitable for Outdoor Network Direct Burial
- Polyester based yarns below Armour tape for easy ripping
- Thermoplastic Material Tube
- Core covering Polyester Binder and Polyester tape
- Excellent Water Proof Layer and Moisture Resistance
- Excellent Crush Resistance Performance



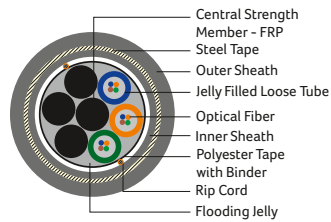
Process Capability of Manufacturing of RoHS Products

Channel Structured Cabling

FIBER CABLES

MULTI-TUBE DOUBLE SHEATH ARMoured CABLE

- Suitable for Outdoor Network Direct Burial
- Polyester based yarns below Armour tape for easy ripping
- Thermoplastic Material Tube
- Core covering Polyester Binder and Polyester tape
- Excellent Water Proof Layer and Moisture Resistance
- Excellent Crush Resistance Performance



Statistical Quality Assurance

Channel Structured Cabling

FIBER PATCH CORD AND PIGTAIL

PATCH CORD SINGLE MODE, LSZH

- LSZH Jacket-Reduced Toxic Gasses Emitted During Combustion
- 100% Factory Tested
- Available with Corning Fiber
- Available in PC/APC Type Options
- High Precision Ceramic Ferrule with Good Concentricity
- Available in Simplex and Duplex Modes



PATCH CORD MULTI-MODE, LSZH

- LSZH Jacket-Reduced Toxic Gasses Emitted During Combustion
- 100% Factory Tested
- Available with Corning Fiber
- Available in PC/APC Type Options
- High Precision Ceramic Ferrule with Good Concentricity
- Available in Simplex and Duplex Modes



PIGTAILS SINGLE MODE AND MULTI-MODE, LSZH

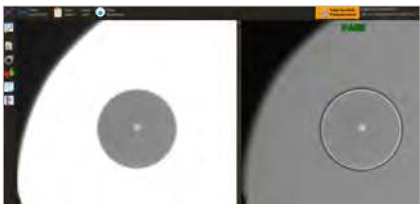
- LSZH Jacket-Reduced Toxic Gasses Emitted During Combustion
- 100% Factory Tested
- Low Insertion Loss and Return Loss
- Available with Corning Fiber
- Available in PC/APC Type Options
- High Precision Ceramic Ferrule with Good Concentricity



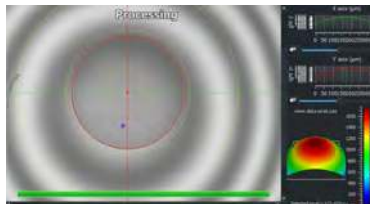
Three Level Testing

DIGISOL Fiber Patch Cords and Pigtails go through 100% testing which include three levels as shown below:

LEVEL ONE Visual inspection for scratch measurement



LEVEL TWO Interferometry Test



LEVEL THREE Optical Test

1. Insertion Loss measurement
2. Return Loss measurement

3 Decades of experience in manufacturing

Channel Structured Cabling

FIBER LIU AND ADAPTERS

DRAWER LIU TYPE

- Available in Standard 19"
- Cold Rolled Steel as Raw Material
- Consist of Top Cover and Bottom Panel
- Easy to Assemble and Dissemble
- Three Types of Input Holes
- Cable Entry Through Water Proof Cable Clamp
- 24 Simplex SC or 12 Duplex LC Adapter Interface
- Splice 24 Fibers at Most with 1 Tray



WALLMOUNT FIBER LIU TYPE

- Cold Rolled Steel as Raw Material
- Consist of Top Cover & Bottom Panel
- Easy to Assemble and Dissemble
- Three Types of Input Holes
- Cable Entry Through Water Proof Cable Clamp
- 12 Duplex SC or LC Adapter Interface
- Patch Cord with Bend Radius Guides
- Minimize Macro Bending



ADAPTERS FC TYPE

- Compact Design
- Telcordia GR-326-Core
- RoHS Compliance
- Low Insertion and Return Loss
- Self Adjusting Metal Panel Clips
- Available in Flange Mount or D Hole Mount Adapter Styles
- Available in Simplex and Duplex Types



ADAPTERS LC TYPE

- Small Footprint
- Telcordia GR-326-Core
- RoHS Compliance
- Low Insertion and Return Loss
- Self Adjusting Metal Panel Clips
- Available in Simplex and Duplex Types



ADAPTERS SC TYPE

- Compact Design
- Telcordia GR-326-Core
- RoHS Compliance
- Low Insertion and Return Loss
- Available In Simplex and Duplex Types



ADAPTERS ST TYPE

- Compact Design
- Telcordia GR-326-Core
- RoHS Compliance
- Low Insertion and Return Loss
- Choice of Flange Options
- Self Adjusting Metal Panel Clips



The plants are ISO 9001:2008, AS 9100:2009 and ISO 14001:2004 certified

Channel Structured Cabling

FTTH SMC, ODF AND SPLITTERS

SMC FIBER OPTIC

- Fiber Management Structure adopts unique splice and distribution design for fiber cable and pigtail
- Frame adopts front side cable operation, saves installation space
- Movable connection of pigtail and patch cords can be finished in the same fiber management tray
- Movable connectors adopts inclined 25 degree installation structure ensures bend radius of pigtail and patch cord
- Front panels suitable for FC, SC, ST adapter



ODF OPTICAL DISTRIBUTION FRAME FTTH

- Fiber Management Structure adopts unique splice and distribution design for fiber cable and pigtail
- Frame adopts front side cable operation, saves installation space
- Movable connection of pigtail and patch cords can be finished in the same fiber management tray
- Movable connectors adopts inclined 25 degree installation structure ensures bend radius of pigtail and patch cord
- Front panels suitable for FC, SC, ST adapter



FTTH SPLITTERS, RACK TYPE

- Low insertion loss
- Low Polarization Dependent Loss
- High Reliability
- Wide wavelength range
- High Return Loss and good Repeatability
- Excellent channel to channel uniformity
- Excellent Environmental Stability
- Excellent Mechanical Stability
- Telcordia GR-1221 and GR-1209



FTTH SPLITTERS, DRAWER TYPE

- Low insertion loss, Low POL and High reliability
- High return loss and Good repeatability
- Wide wavelength range
- Excellent channel-to-channel uniformity



FTTH SPLITTERS, BOX TYPE

- Low Polarization Dependent Loss
- Low insertion loss
- High Reliability
- Wide wavelength range
- High Return Loss and good Repeatability
- Excellent channel to channel uniformity
- Excellent Environmental Stability
- Excellent Mechanical Stability
- Telcordia GR-1221 and GR-1209



FTTH SPLITTERS, TUBE TYPE

- Low insertion loss
- High Reliability
- Low Polarization Dependent Loss
- High Return Loss and good Repeatability
- Wide wavelength range
- Excellent channel to channel uniformity
- Excellent Environmental Stability
- Excellent Mechanical Stability
- Telcordia GR-1221 and GR-1209



Consists of a total of 5 plants covering 140,000 Sq ft of production shop floor area with SMT and Through-hole Lines

Channel Structured Cabling

FTTH FIBER DISTRIBUTION BOX, CONNECTORS, OUTLET & DROP CABLE

FDB FTTH FIBER DISTRIBUTION BOX, 6 CORE

- Full Enclosed & Ergonomic Design
- Meets IP65 Grade for wet-proof, water-proof and anti aiging
- Hinged Splice tray for easy installation and maintenance
- Feeder cable and Drop cable fixation, Fiber Splicing, Storage and Distribution
- Separate cable pathway design
- Modular adapter holder design
- Wall Mounted or Pole mounted
- Suitable for Indoor and Outdoor Use



FDB FTTH FIBER DISTRIBUTION BOX, 8 CORE

- Full Enclosed & Ergonomic Design
- Meets IP65 Grade for wet-proof, water-proof and anti aiging
- Feeder cable and Drop cable fixation, Fiber Splicing, Storage and Distribution
- Separate cable pathway design
- Modular adapter holder design
- Hinged Splice tray for easy installation and maintenance
- Wall Mounted or Pole mounted
- Suitable for Indoor and Outdoor Use



FDB FTTH FIBER DISTRIBUTION BOX, 12 CORE

- Full Enclosed & Ergonomic Design
- Meets IP65 Grade for wet-proof, water-proof and anti aiging
- Feeder cable and Drop cable fixation, Fiber Splicing, Storage and Distribution
- Separate cable pathway design
- Modular adapter holder design
- Hinged Splice tray for easy installation and maintenance
- Wall Mounted or Pole mounted
- Suitable for Indoor and Outdoor Use



FIELD ASSEMBLY CONNECTORS, FIBER OPTIC

- Industry leading double V groove alignment clamping mechanism
- User friendly and cost effective
- Superior qualified standard PC, APC, UPC polishing
- Reliable and superior optical performance
- Good exchange ability and good reliability
- No electricity required
- Cable tensile test complies with GR-326-CORE
- No epoxy and polishing required
- Only three pre-assembly parts



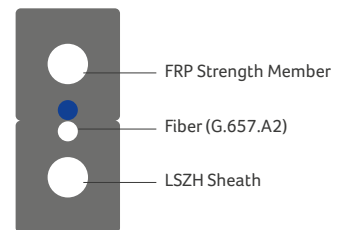
FTTH OUTLET, BOX TYPE

- Indoor FTTH and Fiber Optic CATV Application
- Inner tray for splice sleeve
- Compact design
- Available with SC Simplex or LC Duplex
- All Modules are solderless mode



DROP CABLE, FTTH

- Simple Structure
- Light Weight
- Novel Groove Design
- Easily Strip and Splice
- High Tensile Strength and Metal Free
- Simplified Installation and Maintenance
- LSZH and Flame Retardant Sheath
- Environment Friendly and Good Safety



Process Capability of Manufacturing of RoHS Products _____

DIGISOL'S OFFERING

A wide range of products and solutions across the IT networking spectrum that include

DIGISOL's offerings



Structured Cabling Systems



FTTH Solutions



Switching Solutions



Wireless Solutions

Value Addition



Cash Karo
(Loyalty Program)



Service Support



Digisol Institute of
Technical Training

More details on www.digisol.com



DIGISOL SYSTEMS LIMITED

A Subsidiary of Smartlink Holdings Limited

1800-209-3444 | helpdesk@digisol.com | www.digisol.com

@DIGISOLINDIA

@digisol_solutions

@DIGISOL_SNSL

@DIGISOL SYSTEMS LIMITED