



STRUCTURED CABLING SYSTEMS

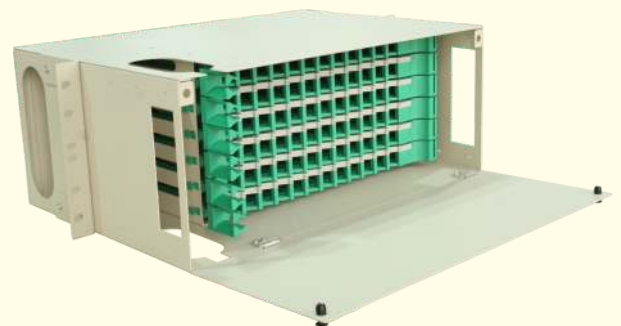
DIGISOL Optical Distribution Frame

Introduction:-

DIGISOL Optical Distribution Frame provides cable interconnections between communication facilities which can integrate fiber splicing, fiber termination, fiber optic adapters and connectors in single unit for High Density capacity designed for 24 core to 144 core. Easy installation for individual splice modules and well organised operation during high density splicing applications.

Key Features:-

- Frame adopts front side cable operation, saves installation space
- Fiber Management Structure adopts unique splice and distribution design for fiber cable and pigtail
- Movable connection of pigtail and patch cords can be finished in the same fiber management tray
- Movable connectors adopts inclined 25 degree installation structure ensures bend radius of pigtail and patch cord
- Reasonable layout makes line clear and protects fiber optic cable
- Front panels suitable for FC, SC, ST adapter



Technical Specifications:-

Tensile Force (N)	: 1000
Strength	: 25KV (DC)/1Min, No Flashover
Pressure Resistance (KPA)	: 70 ~ 106
Return Loss (DB)	: PC (>=45DB), UPC (>=50DB), APC (>=60DB)
Ports	: 12 to 24
Installation Type	: Rack Mount/Wall Mount

Environmental Specifications:-

Operation Temperature(Degree C)	: Minus 40 to Plus 45
Relative Humidity	: 85%

Ordering Information:-

Part Codes	Description
DGF-DFXXXX-06	DIGISOL Distribution Frame, Blank, 6 CORE
DGF-DFXXXX-12	DIGISOL Distribution Frame, Blank, 12 CORE
DGF-DFXXXX-24	DIGISOL Distribution Frame, Blank, 24 CORE
DGF-DFXXXX-32	DIGISOL Distribution Frame, Blank, 32 CORE
DGF-DFXXXX-48	DIGISOL Distribution Frame, Blank, 48 CORE
DGF-DFXXXX-72	DIGISOL Distribution Frame, Blank, 72 CORE
DGF-DFXXXX-96	DIGISOL Distribution Frame, Blank, 96 CORE
DGF-DFXXXX-144	DIGISOL Distribution Frame, Blank, 144 CORE

