



DIGISOL™

FIBER

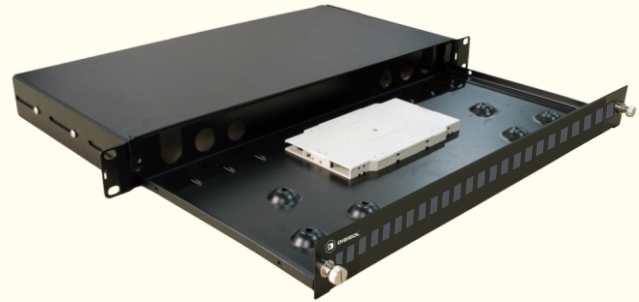
STRUCTURED CABLING SYSTEMS

DIGISOL LIU Unloaded Rackmount - Drawer Type



Introduction:-

DIGISOL LIU 1U drawer type is a Fiber Rack Mount which has an enhanced engineering design and aesthetically superior, made of specially treated ferrous metal with black matt powder coating. The rackmount allows termination of optical cables within the premises or from the central office. The splice tray allows to fusion splice the optical fiber cable between outside plant and pigtails. The rackmount provides storage space for spliced fiber cable and also for excess lengths of pigtails, arranged within cable management rings which provides a highly effective strain relief to cables through proper routing.



Key Features:-

- Suitable to mount in standard 1U 19 inch rack.
- Made of Cold Rolled Steel material with black powder coating
- Drawer type for ease in maintenance
- Ease in assembling of Adapters, splicing arrangement in splice tray and cable routing
- Three types of cable entry holes for different size cables through cable glands
- Ease in splicing of 24 fibers in each fiber splicing trays
- Suitable for 6/12/24 SC Simplex or 6/12/24/48 LC Duplex for -2D/3D product reference
- Suitable for 6/12/24/48 SC Duplex -4D product reference
- Cable management rings are used to ensure flexibility of pigtails and excess fibers
- Comprehensive Accessory kits for cable entry and fiber management

Technical Specifications:-

Adapter Capacity	: 6/12/24/48 (SC/LC, Simplex/Duplex)
Adapter Panels	: Fixed on drawer base
Splice Tray	: 1no. for 24 fibers / 2nos. for 48 fibers
Accessories	: Cable management rings (6 nos), Cable glands (PG13.5, 2 nos), Splice rods (24/48 nos), Blanking clips (24 nos), Velcro ties (12 nos.) Cable ties (6 nos.), Cable inlet/outlet hole covers (2 types, 2 nos each)

Mechanical Specifications:-

Dimensions (mm)	: 482 x 220 x 44.3 mm (Length x Width x Height)
Base Material	: Cold Rolled Steel with Black Powder Coating
Splice Tray Material	: ABS Plastic (220 x 90 x 15 mm)(Length x Width x Height)
Maximum Fiber Count	: 24 Fiber (SC Simplex), 48 Fiber (LC Duplex / SC Duplex)
Fusion Capacity	: 24 Fiber maximum per splice tray

Environmental Specifications:-

Storage Temperature	: -20 °C to +70° C
Installation Temperature	: -20 °C to +70° C
Operating Temperature	: -20 °C to +70° C

Standards:-

Comply as per ANSI/TIA 568-C.3
Comply as per ISO/IEC 11801
RoHS Compliant: Directive 2002/95/EC

Ordering Information:-

Product Code	Description
DGF-LXXXUXX-2D	DIGISOL FIBER LIU, Drawer Type, Unloaded, (24 Port SC)
DGF-LXXXUXX-3D	DIGISOL FIBER LIU, Drawer Type, Unloaded, (For 48 LC)
DGF-LXXXUXX-4D	DIGISOL FIBER LIU, Drawer Type, Unloaded, (48 Port SC)

DIGISOL is a Subsidiary of Smartlink Holdings Limited

DIGISOL SYSTEMS LIMITED
215 Atrium Bldg., 2nd Floor,
B-Wing, Opp. Big Cinema,
Courttyard Marriott Compound,
Andheri-Kurla Road,
Andheri (E), Mumbai - 400093.



1800-209-3444



www.digisol.com



helpdesk@digisol.com

@DIGISOLINDIA

Revised on: 20 March 2020
Revision number: Rev 01