



Quick Installation Guide

802.11b/g/n 150Mbps Wireless Micro USB Adapter

DG-WN3150Nu



Copyright

Copyright 2021 by DIGISOL SYSTEMS LTD. All rights reserved.
Company has an on-going policy of upgrading its products and it may be possible that information in this document is not up-to-date.
Please check with your local distributors for the latest information.
No part of this document can be copied or reproduced in any form without written consent from the company.

Trademarks:

DIGISOL® is a trademark of DIGISOL SYSTEMS LTD. All other trademarks are the property of the respective manufacturers.

Package Contents

The following items should be present in your package:

- DG-WN3150Nu 150Mbps Wireless Micro USB Adapter (1 No.)
- Quick installation guide
- Installation software CD (includes User Manual, QIG & Driver/Utility)

Make sure that the package contains above items. If any of the listed items is damaged or missing, please contact your retailer immediately.

Product Overview

Thank you for purchasing DG-WN3150Nu IEEE 802.11b/g/n 150Mbps wireless N micro USB adapter! This adapter has an ultra-nano size design which enables users to plug it into the USB port of your computer. The ultra nano design makes the wireless adapter portable and easy to carry even when the users are roaming. DG-WN3150Nu supports wireless standards IEEE802.11b/g, this wireless adapter also supports IEEE802.11n through which users can get data transfer speed up to 150Mbps.

Product Features

- IEEE 802.11b/g/n compatible.
- Wireless data transfer rate—up to 150Mbps.
- Supports WMM wireless QoS feature.
- Supports 64/128-bit WEP, WPS, WPA, WPA2 with IEEE 802.1x functions for high level of security.
- Supports the most popular OS: Windows XP/7/8/10.
- Supports WPS (Wi-Fi Protected Setup) soft button for easy connection.
- Supports Soft AP function.
- Supports USB 2.0 interface.
- Portable and Ultra Nano size design.

System requirements

The following system requirements are recommended.

- An empty USB 2.0 port
- Windows XP, Windows 7, Windows 8, Windows 10 operating system
- CD-ROM drive
- At least 100MB of available disk space

Product View

Below shown is the product view indicating the USB interface

USB Interface



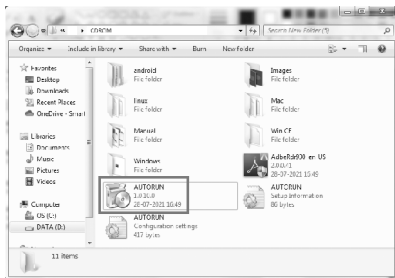
Driver Installation

Please follow the instructions mentioned below to install your new wireless USB adapter:

Note 1: The following installation was operated under Windows XP. (Procedures are similar for Windows 7/8.)

Note 2: If you have installed the Wireless PC Adapter driver & utility before, please uninstall the previous version first.

- 1 Insert "Installation Software CD" into the CD/DVD ROM drive of your computer, and Browse it. Execute 'AUTORUN' program.

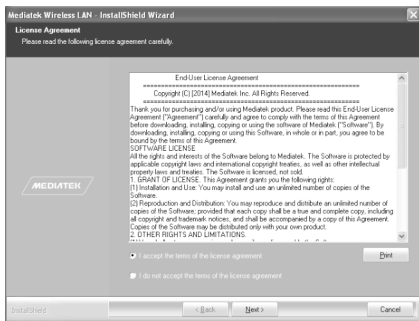


Once you run the "AUTORUN" file, the screen shown below will appear.

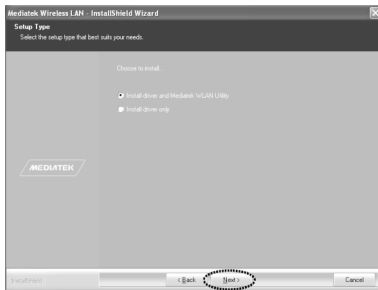


Click on "Drivers & Utility". The screen as shown below will appear.

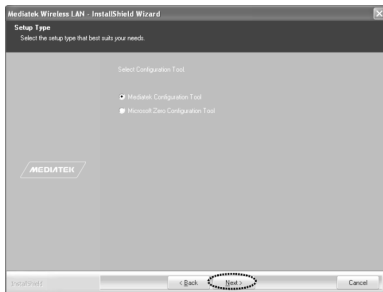
- 2 Select the option "I accept the terms of the license agreement". Click on "Next".



- 3 The screen as shown below will appear. Select "Install driver and Mediatek WLAN utility". Click on "Next".



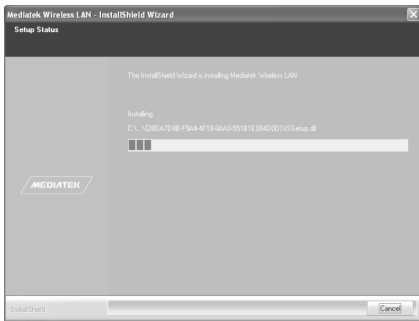
- 4 The screen as shown below will appear. Select "Mediatek Configuration Tool". Click on "Next".



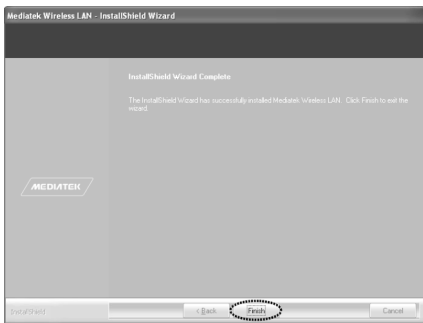
- 5 The screen as shown below will appear. Click on "Install".



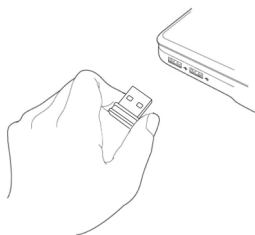
- 6 The installation process will appear as shown below.



Once the installation is complete, the below given screen will appear. Then click on "Finish".



Insert the wireless USB adapter into an empty USB 2.0 port. Never use force to insert the adapter, if you feel it's stuck, flip it over and try again.



A new icon will appear near the clock of system tray:





HERE!

Left-click the icon and it will launch the wireless network configuration utility.

The different color & logo indicates the different wireless connection status.

 Wireless USB adapter not detected.

 No connection with access point is established.

 Connection with access point has been established.

For detailed instructions of wireless network configuration utility, please see User Manual.

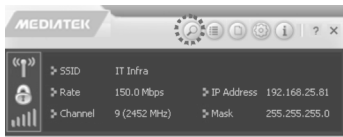
Driver Installation is now Complete!

Connecting to a Wireless Network

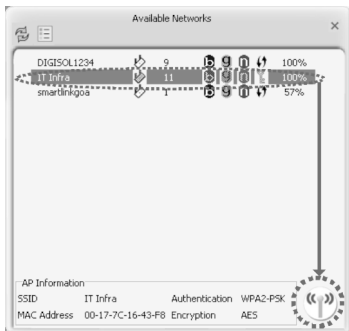
- 1 Left-click the Mediatek configuration utility icon located at lower-right corner of computer desktop, and configuration menu will appear:



- 2 To connect to an available network, click the Available Networks button as shown below.



- 3 In the Available Networks window that appears, select the name of the network to which you are connecting. Then click the connect icon and wait for several seconds while the utility sets up a connection.

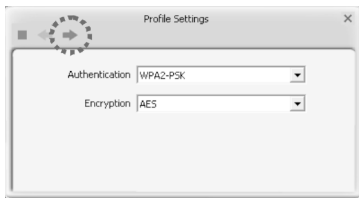


If the wireless access point you wish to connect does not appear here, you can click 'Refresh' button to scan for wireless access points again; if the wireless access point you are looking for still does not appear, try to move the computer closer.

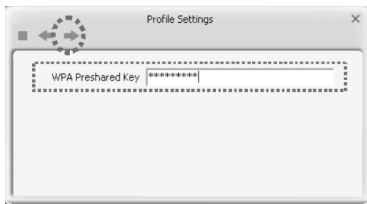
When the access point you're looking for is on the list, click it and then click 'Connect' button as highlighted in the screenshot above.

- 4 The Mediatek Utility automatically detects and displays the security settings of the network to which you are connecting in the Profile Settings screens. For instructions on setting up security, click on the security method detected for your network.

If the Utility shows that WPA-PSK or WPA2-PSK security is detected, click the right arrow to save your settings.

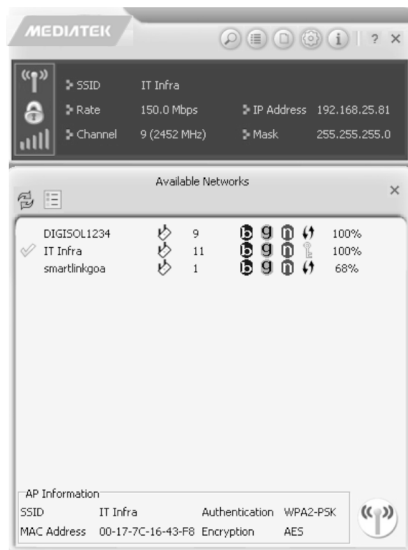


In the screen that displays, in the 'WPA Preshared Key' field, type a security key, the same as that used by the AP or wireless router to which you are connecting. Click the right arrow to save your settings and connect to the network.



- 5 Network adapter will attempt to connect to access point now, this may require few seconds to minutes, please be patient.

NOTE: If you are connected to an access point but the connection has dropped soon, please check security settings and re-check password spelling.





WARRANTY

This Product is covered under DIGISOL Warranty program backed by DIGISOL Service Center. To avail this Warranty offer, customer needs to contact DIGISOL's Technical Assistance Center for the same. You may be asked to provide proof of purchase of product for warranty claim of defective product. Please refer website www.digisol.com for the detailed support terms & conditions and support process.

Warranty Policy

1. Hardware Warranty : Hardware warranty period shall be limited up to Three years. External Power Adapter shall carry One year warranty only against manufacturing defects. Any repair or replacement will be rendered by DIGISOL at its Service Center only.
2. Software Warranty : DIGISOL issues this Limited Software Warranty that the software portion of the product ("Software") will substantially confirm to DIGISOL's then current functional specifications for the software, as set forth in the applicable documentation, from the date of original retail purchase of the Software for a period of one year ("Software Warranty period"), provided that the Software is properly installed on approved hardware and operated as contemplated in its documentation.
3. Governing Law: This warranty shall be governed by Indian Laws.
4. Warranty shall subject to the terms & conditions specified in the DIGISOL Product Warranty policy displayed on www.digisol.com
5. To avail and activate warranty for your product.
Kindly register your product by calling us @1800 209 3444

DIGICARE

✉ helpdesk@digisol.com

☎ **1800 209 3444**






DIGISOL SYSTEMS LIMITED

L-7, Verna Industrial Estate,
Salcete, GOA - 403722

Digisol is a Subsidiary of Smartlink Holdings Limited

www.digisol.com

DIGICARE

 **1800 209 3444**

 helpdesk@digisol.com