



DIGISOL[®]

WIRELESS AND BROADBAND

DIGISOL Indoor 802.11ax Wi-Fi6 4x4 MIMO Multigig PoE Enterprise AP

DG-WM600-X4

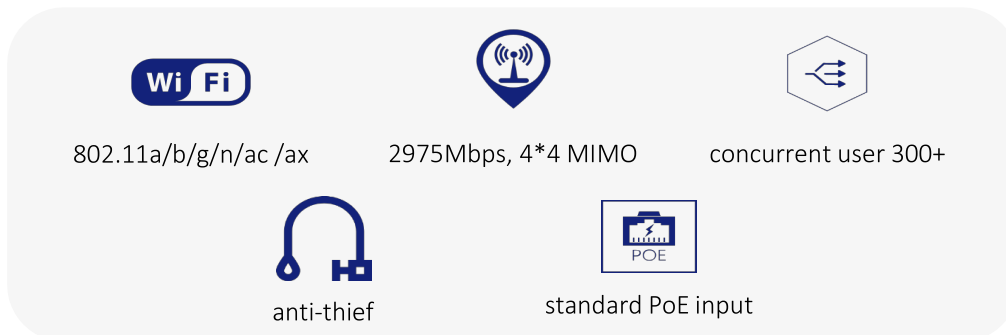


Key Features:-

- Entry-level enterprise-class indoor 802.11ax Wi-Fi 6 wireless access point
- Wireless user management at a fine granularity
- Anti-thief
- Good PoE compatibility
- Dual-mode fit & fat
- 4X4 MU-MIMO, Wave2
- TWT
- 2.5Gbps Multigig LAN Ports

Introduction:-

DG-WM600-X4 is a dual-band high-performance gigabit wireless access point device based on the 802.11ax standard launched by DIGISOL, it could offer maximum 2975Mbps access rate. DG-WM600-X4 works in the 2.4GHz and 5GHz frequency bands and supports advanced wireless technologies such as MU-MIMO, OFDMA, spatial multiplexing, and TWT. The first radio of DG-WM600-X4 works in the 2.4GHz frequency band and can provide a maximum access rate of 575Mbps; the second radio works in the 5GHz frequency band and can provide a maximum access rate of up to 2400Mbps.



Entry-level enterprise-class indoor 802.11ax Wi-Fi 6 wireless access point

DG-WM600-X4 supports the 802.11ax standard, operates in both 2.4 GHz and 5 GHz band, and provides an access bandwidth up to 2975 Mbps. This model is the best choice for middle-level office or company as it can support concurrent users up to 300+.

Wireless user management at a fine granularity

DG-WM600-X4 can support a maximum of 32 WLANs to implement multi-layer multi-service management of wireless users at a fine granularity. Each WLAN supports access control and uplink/downlink rate limit based on MAC or IP addresses. These WLANs may be bound to virtual local area networks (VLANs).

Flexible installation

DG-WM600-X4 supports wall mounting, ceiling mounting, T-keel mounting, you can deploy it almost everywhere that you want.

Anti-thief

DG-WM600-X4 can work with Kensington technology to protect the investment of customers, which is very important to the specific customer.

Good PoE compatibility

DG-WM600-X4 can work well with all PoE switch (Digisol ,cisco, HUAWEI, juniper, etc.) which support 802.3af & at standard, this allows to power up DG-WM600-X4 directly, a power adapter is not required anymore.

Dual-mode fit & fat

DG-WM600-X4 can work in fit or fat mode and can flexibly switch between the fit mode and the fat mode according to network planning requirements.



DIGISOL®

WIRELESS AND BROADBAND

Technical Specifications:-

HARDWARE SPECIFICATIONS	
ITEM	DG-WM600-X4
Dimensions (L*W*D) (mm)	201 x 195 x 41
Physical port	2 x 10/100/1000/2500Mbps ethernet ports
	1 x BLE module
Console port (RJ-45)	1
USB 2.0	2
Power supply	802.3at and External power adapter (Input: 100~240V AC , Output: 12 V DC)
Maximum power consumption	<20W
RF port	Built-in 2.4 GHz 4 dBi antenna and 5 GHz 5 dBi antenna
Working frequency band	802.11b/g/n/ax: 2.4GHz-2.483GHz
	802.11a/n/ac/ax : 5.725~5.850GHz ; 5.150~5.350GHz ; 5.47~5.725GHz
Modulation technology	11b : DSS: CCK@5.5/11Mbps, DQPSK@2Mbps, DBPSK@1Mbps
	11a/g : OFDM:64QAM@48/54Mbps, 16QAM@24Mbps, QPSK@12/18Mbps, BPSK@6/9Mbps
	11n : MIMO-OFDM: BPSK, QPSK, 16QAM, 64QAM
	11ac : MIMO-OFDM: BPSK, QPSK, 16QAM, 64QAM, 256QAM
	11ax: MIMO-OFDM: BPSK, QPSK, 16QAM, 64QAM, 256QAM, 1024QAM
Transmit power	2.4GHz: 23dBm (Per Chain)
	5GHz: 23dBm (Per Chain)
	(Note: final output power comply with deployment regulation might be different)
Power adjustment granularity	1 dBm
Working/Storage temperature	-10°C to +5 5°C
	-40°C to +70°C
Working/Storage RH	5% to 95% (non-condensing)
Protection level	IP41
Size	186*186*35.8mm

SOFTWARE SPECIFICATIONS		
ITEM	FEATURE	DG-WM600-X4
WLAN	Product positioning	Indoor dual-frequency
	Working frequency band	2.4 GHz and 5 GHz
	Bandwidth performance	2975Mbps
	Virtual AP (BSSID)	32
	Concurrent user	300+
	Number of spatial streams	2.4GHz:2, 5GHz:4
	Dynamic channel adjustment (DCA)	Yes
	Transmit power control (TPC)	Yes
	Blind area detection and repair	Yes
	SSID hiding	Yes
	RTS/CTS	Yes
	RF environment scanning	Yes

**DIGISOL**[®]

WIRELESS AND BROADBAND

Technical Specifications:-

SOFTWARE SPECIFICATIONS		
ITEM	FEATURE	DG-WM600-X4
	Hybrid access	Yes
	Restriction on the number of access users	Yes
	Link integrity check	Yes
	Intelligent control of terminals based on airtime fairness	Yes
	High-density application optimization	Yes
802.11ax	Space streams	2.4GHz:2, 5GHz:4
	Frequency band	2.4GHz +5GHz
	80 MHz bundling	Yes
	Frame aggregation (A-MPDU)	Yes
	Frame aggregation (A-MSDU)	Yes
	Maximum likelihood demodulation (MLD)	Yes
	Transmit beamforming (TxBF)	Yes
	Maximum ratio combining (MRC)	Yes
	Space-time block coding (STBC)	Yes
	Low-density parity-check code (LDPC)	Yes
Security	Encryption	64/128 WEP, TKIP, and CCMP encryption
	802.11i	Yes
	WAPI	Yes
	MAC address authentication	Yes
	LDAP authentication	Yes
	PEAP authentication	Yes
	WIDS/WIPS	Yes
	Protection against DoS attacks	Anti-DoS for wireless management packets
	Forwarding security	Frame filtering, white list, static blacklist, and dynamic blacklist
	User isolation	AP L2 forwarding suppression Isolation between client
	Periodic SSID enabling and disabling	Yes
	Access control of free resources	Yes
	Wireless SAVI	Yes
	ACL	Access control of various data packets such as MAC, Ipv4, and Ipv6 packets
	Secure access control of APs	Secure access control of APs, such as MAC authentication, password authentication, or digital certificate authentication between an AP and an AC
802.11W	Yes, encryption of management frames	
Forwarding	IP address setting	Static IP address configuration or dynamic DHCP address allocation
	IPv6 forwarding	Yes
	IPv6 portal	Yes
	Local forwarding	Yes
	Multicast	IGMP snooping



Technical Specifications:-

SOFTWARE SPECIFICATIONS		
ITEM	FEATURE	DG-WM600-X4
	Roaming	Yes
	AP switching reference	Signal strength, bit error rate, RSSI, S/N, whether neighboring APs are normally operating, etc.
	WDS	Yes
QoS	WMM	Yes
	Priority mapping	Ethernet port 802.1P identification and marking
		Mapping from wireless priorities to wired priorities
	QoS policy mapping	Mapping of different SSIDs/VLANs to different QoS policies
		Mapping of data streams that match with different packet fields to different QoS policies
	L2-L4 packet filtering and flow classification	Yes: MAC, IPv4, and IPv6 packets
	Load balancing	Load balancing based on the number of users
		Load balancing based on user traffic
		Load balancing based on frequency bands
	Bandwidth limit	Bandwidth limit based on Aps
		Bandwidth limit based on SSIDs
		Bandwidth limit based on terminals
		Bandwidth limit based on specific data streams
	Call admission control (CAC)	CAC based on the number of users
	Power saving mode	Yes
Automatic emergency mechanism of APs	Yes	
Intelligent identification of terminals	Yes	
Multicast enhancement	Multicast to unicast	
BYOD	Identification of terminals	
Management	Network management	Centralized management through an AC; both fit and fat modes
	Maintenance mode	Both local and remote maintenance
	Log function	Local logs, Syslog, and log file export
	Alarm	Yes
	Fault detection	Yes
	Statistics	Yes
	Switching between the fat and fit modes	An AP working in fit mode can switch to the fat mode through a wireless AC
		An AP working in fat mode can switch to the fit mode through a local control port or Telnet.
	Remote probe analysis	Yes
	Dual-image (dual-OS) backup mechanism	Yes
	Watchdog	Yes



DIGISOL[®]

WIRELESS AND BROADBAND

Typical Application

DG-WM600-X4 is ideal AP for indoor Wi-Fi coverage, with zero touch provisioning, advanced RF control and cost-effective design, it could offer best indoor Wi-Fi experience for customers.



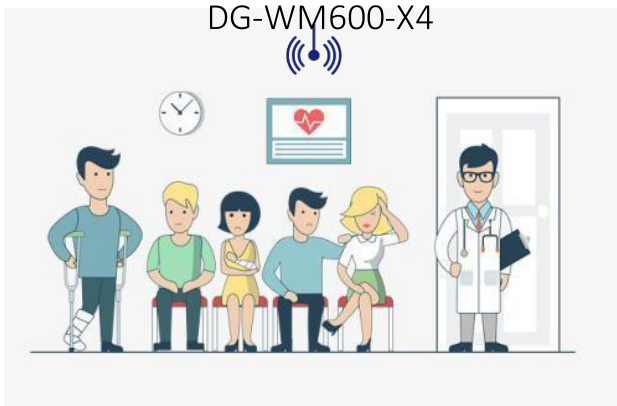
Class room



Medium-sized Meeting room



Office



Hospital

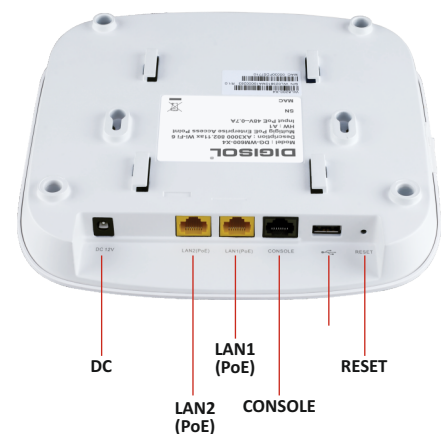
- 802.11ax, Wi-Fi 6
- Access bandwidth 2975Mbps
- 802.3at PoE
- Anti-theft
- Concurrent user 300+

Ordering Information:-

DG-WM600-X4 : DIGISOL Indoor Wi-Fi 6 AP, 802.11a/b/g/n/ac/ax supported (2.5Gbps Multigig Ports), max 2975Mbps access rate, fat & fit, 802.3at PoE, default no power adapter, managed by DIGISOL hardware controller (DG-WU6028C / DG-WU2028E / DG-WU8260C)

*Warranty shall be subject to terms and conditions specified in the DIGISOL PRODUCT WARRANTY displayed on the website of the company.

DIGISOL Logos are trademarks and/or registered trademarks of DIGISOL SYSTEMS LIMITED. Other trademarks, product, service and company names mentioned are the property of their respective owners. Information is subject to change without notice. The actual product appearance may differ from the one shown here. © 2023 DIGISOL SYSTEMSLIMITED. All rights reserved.



DIGISOL is a Subsidiary of Smartlink Holdings Limited

DIGISOL SYSTEMS LIMITED
CITIPOINT, 7th Floor,
Unit No. B-701, B-702 & B-703,
Andheri-Kurla Road, J. B. Nagar,
Andheri (East),
Mumbai - 400059, INDIA

1800-209-3444
www.digisol.com
helpdesk@digisol.com

@DIGISOLINDIA