

**smartlink**  
HOLDINGS







**smartlink**  
HOLDINGS

#### DIGISOL SYSTEMS LIMITED

A Subsidiary of Smartlink Holdings Limited

#### Corporate Office :

CITIPOINT, 7th Floor, Unit No. B-701, B-702 & B-703, Andheri-Kurla Road,  
J. B. Nagar, Andheri (East), Mumbai - 400059, INDIA  
Land Phone : +91 22 4961 7068

 @DIGISOLINDIA  
 @digisol\_solutions  
 @DIGISOL\_SNSL  
 @DIGISOL SYSTEMS LIMITED

1800-209-3444 • [helpdesk@digisol.com](mailto:helpdesk@digisol.com) • [www.digisol.com](http://www.digisol.com)

VER. 1.3

## STRUCTURED CABLING SOLUTIONS

\*Made In India products are available in specific part codes.

FTTH | WIRELESS (Wi-Fi) | SWITCHING | STRUCTURED CABLING (COPPER & FIBER)

[www.digisol.com](http://www.digisol.com)

**DIGICARE**

 [helpdesk@digisol.com](mailto:helpdesk@digisol.com)  
 **1800 209 3444**



**Mr. K. R. NAIK**

Executive Chairman, Smartlink Holdings Ltd.  
Chairman & Founder, Digisol Systems

## ► ABOUT Mr. K. R. NAIK

Kamalaksha Rama Naik, better known as K.R. Naik, is an **Indian Industrial Engineer**, and an IT networking industry veteran with experience of close to five decades. He is widely regarded as **Father of India's IT Networking Industry** due to his pioneering spirit in Manufacturing Networking Products in India for nearly 3 decades. He also played a key role in creating the Channel Distribution in IT Networking Products market and developing the Channel Ecosystem in India.

Over the years, he has pioneered several new businesses and distribution models as early as 1990 when IT was a nascent industry, and the concept of an IT Distribution Channel was just conceived. He is credited for giving India its first indigenous IT Networking Products manufacturing company – **Smartlink Network Systems Ltd.**, which has been a local manufacturing success story for over three decades. Mr. Naik has been instrumental in introducing Channel Distribution of products of well-known global IT brands Cisco & Foundry. He had joint ventures with D-Link Corporation in Networking Products, GIGABYTE for motherboards, LANNER for Industrial IT Products and SAPPHIRE UK for SCS products. D-Link India R&D operations was in Bengaluru, supporting D-Link Corporation from 1997 and later closed operation in 2011.

Mr. Naik was born in Karwar, Karnataka on 19<sup>th</sup> November 1947. He completed his schooling in Karwar and later shifted to Mumbai. He is a mechanical engineer with a **P.G. Diploma in Industrial Engineering and Licentiate in Plastic Engineering**. He did a Business Management course from **Jamnalal Bajaj Institute** in Mumbai, which was sponsored by IBM. He began his IT career with IBM's manufacturing plant in 1969 at Mumbai, starting as a Mainframe Peripheral Assembly Engineer, and thereafter worked in various departments including product development and sourcing. During his IBM stint he had best opportunity to learn and develop various types of detail parts of an indigenous line printer.

After IBM closed India operations in 1978, he joined ORG System Ltd., where in he was one of the 10 team members who designed and developed prototype first indigenous line printer with a speed of 1000 lines per minute in year 1981. After the IBM closure, many mainframe computer maintenance companies were formed in India but started facing problems to procure spare parts of peripherals. In 1982 he started precession parts manufacturing and reworking of parts under Modern Components Tooling Pvt. Ltd. (MOTCO). He used his IBM experience in developing and reworking very costly and complicated parts of IBM peripherals locally.

As personal computers started appearing in the market, he decided to manufacture PCs in Mumbai and obtained the License to Manufacture Personal Computers by forming new Company VIRTUAL COMPUTERS PVT. LTD. He imported HOLLIS USA Soldering Machine to manufacture motherboards and add-on cards in Mumbai and offered 'VIRTUAL COMPUTER' a Personal Computer Brand in India. In 1990 as Networking Cards started appearing in market, he decided to take distribution of D-Link in Mumbai and started offering the D-Link brand of Network Cards by importing from Taiwan along with Personal Computers.

In 1993 for expansion he shifted to Goa, to setup a large manufacturing unit under SMARTLINK with intention of Joint Venture with D-Link Taiwan. Then in 1995 D-Link Corporation joined as partner and the company name was changed to D-Link India. Over the years, the manufacturing operations expanded to 8 SMT lines catering to various products.

Further, he started manufacturing SCS products locally with Sapphire UK, who were ODM suppliers to many worldwide branded companies. He introduced DIGILINK an indigenous local brand in Passive Networking (Structured Cabling Systems) with own developed patented contacts design of KEYSTONE.

As D-Link Taiwan in 2005 had become a Brand Products Trading Company and started sourcing products from ODM suppliers, D-Link India also started sourcing products directly from many ODM suppliers in Taiwan & China. As Indian operations had become more independent, it was decided to part the joint venture and a formal demerger with the JV partner resulted in changing the company name back to SMARTLINK from D-Link India, while sharpening its focus on its Indian brand DIGILINK SCS Products by manufacturing in Copper and Fiber. Having a large manufacturing base, the company also started manufacturing large quantity motherboards and introduced its Indian brand DIGISOL in Active Networking products line in 2009.

Today Under SMARTLINK HOLDINGS which is main BSE|NSE listed company, there are three brand companies:

1. SYNEGRA EMS Company, where all Active Products are manufactured to supply EMS and ODM products to brand companies.
2. TELESMArt SCS Company, where all Passive Products in Copper and Fiber are manufactured, to supply to brand companies.
3. DIGISOL SYSTEMS, the Brand products company.

Mr. Naik is Chairman and Founder of his own brand company **Digisol Systems**. He is a former President of Manufacturers' Association for Information Technology (MAIT).



## A GLORIOUS LEGACY OF 3 DECADES

### ► SMARTLINK HOLDINGS LTD.

Smartlink is a BSE|NSE listed company with expertise of IT networking products marketing.

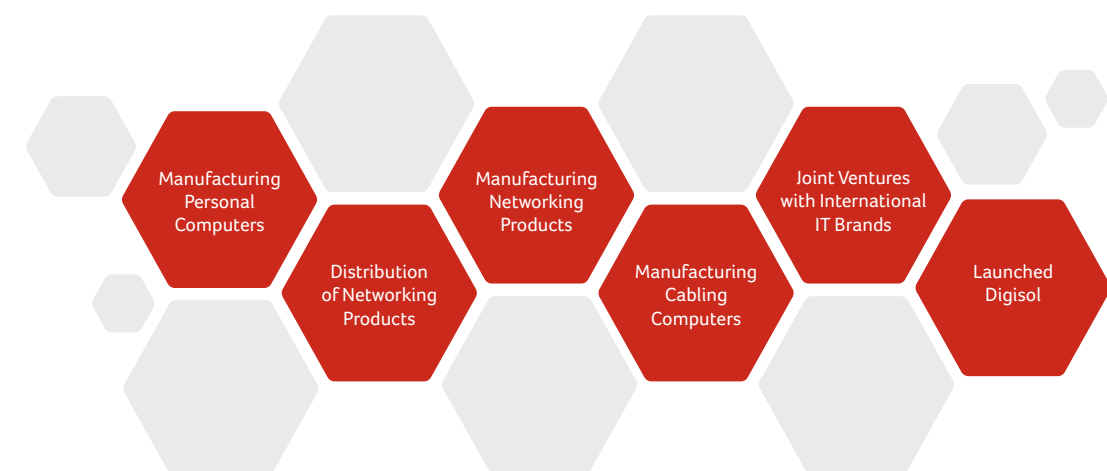
Smartlink Holdings Ltd., earlier known as Smartlink Network Systems Ltd., is one of India's leading IT Networking Products Manufacturing Company for more than 3 decades. It was established in the year 1993 to prop the Indian

market in the field of Network Infrastructure. Pioneer in the field of Active and Passive Networking products.

Smartlink has a rich history of making many product brands reach the desired heights in the Indian and International markets. Smartlink now is an NBFC company, with its operations splits into 3 wholly owned subsidiaries to have focused business approach.

[www.smartlinkholdings.com](http://www.smartlinkholdings.com)

## Our Journey So Far





## THE SMARTLINK INDEPENDENT UNITS :

### ► SYNEGRA EMS LTD.

Synegra is a 100% owned EMS/ODM products manufacturing company of Smartlink Holdings Limited. It has a large manufacturing setup of SMT lines, soldering lines, assembly & testing lines. It manufactures all kinds of products – from PCB assemblies like motherboards, add-on cards, FTTH and Wi-Fi products, telecom products, mobile phones, automotive electronic products, and Defense electronics applications products. Synegra sources detail parts from local suppliers as well as from well-known companies worldwide.

Synegra offers locally manufactured Active Range of networking products by sourcing detail parts from Taiwan and China to Digisol Systems, as Made in India products.

[www.synegra.com](http://www.synegra.com)



### ► TELESMArt SCS LTD.

Telesmart is a subsidiary of Smartlink Holdings Limited, having a Taiwan JV partner with latest patents in SCS products in copper connecting parts with high bandwidth application engaged in the manufacturing of wide range of structured cabling systems (SCS) products. Telesmart also manufactures all kind of fiber products, with assembly and testing equipment set-up in the fiber range of products. Telesmart being an ODM, supplies to many brand companies, as well as Digisol Systems Ltd. The company is also looking for contract manufacturing for its fiber products.

Telesmart's SCS products portfolio includes end-to-end cabling solutions in copper from Cat5e, Cat 6, Cat6A, STP, FTP, patch panels, patch cords, and face plates. The fiber range includes all kinds of fiber patch cords, pig tails with performance certificates, and LIUs.

[www.telesmartscs.com](http://www.telesmartscs.com)



### ► DIGISOL SYSTEMS LTD.

DIGISOL brand came into existence after Smartlink's JV with the Taiwanese company D-Link ended in 2009. As Smartlink splits operation into 3 Units, "Digisol Systems" became independent brand company with Sales, Marketing, Service & Support operations.

Today, Digisol is a trusted Made in India IT networking brand for all large volume products in the Active range, including FTTH and Wi-Fi products, routers, and switches. In the Passive range, it has copper and fiber products. It is a wholly owned subsidiary of Smartlink Holdings Ltd. Digisol Systems is the only India-based IT networking brand products company that has a strong pan-India presence, with sales representatives in 50 cities, 10 branch offices, 45 distributors, 63 service support centres, and over 1,000 partners. Digisol's endeavor is to consistently offer innovative future-ready products that aim to meet consumer expectations in the IT networking space, by sourcing locally from Smartlink subsidiaries Synegra EMS and Telesmart SCS or by sourcing low volume products from worldwide.

[www.digisol.com](http://www.digisol.com)

Spearheading Government's **Make in India** vision, DIGISOL is the only India based IT networking brand that has strong **PAN India** presence with

- |  |  |
|--|--|
|  Sales Representatives in <b>50+ cities</b> |  <b>45+</b> Regional Distributors |
|  <b>63+</b> Service Support Centres         |  <b>200+</b> Stockist Partners    |
|  <b>10+</b> Branch Offices                  |  <b>1000+</b> System Integrators  |



## DIGISOL'S OFFERING



### FTTH SOLUTIONS



- XPON ONUs
- GPON OLTs
- GEAPON OLTs
- PON TRANSCEIVERS

Our End-to-End FTTH Solutions serve today's smart offices & home demand to enable smart technologies like Fiber-To-The-Home (FTTH), high-speed internet, triple-play service, Voice & Video for home-connected users. We offer hybrid solutions to enable seamless integration into the Internet of Things (IoT) capabilities.



### WIRELESS (Wi-Fi) SOLUTIONS



- Indoor Access Points
- Outdoor Access Points
- Controllers
- USB Adapters
- Repeater

Digisol wireless solution is perfect for businesses of all sizes demanding a simple, reliable, and accessible wireless network solution providing high-speed data and a seamless user experience. Our wireless services ensure high-speed data network coverage and provide seamless integration into networking services.



### SWITCHING SOLUTIONS

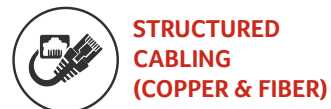


- Fully managed
- Smart managed
- Unmanaged
- Chassis

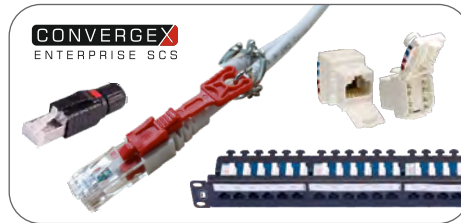
Digisol delivers a complete package of switching solutions for Enterprise Networks, Data Centres, Small and Mid-size businesses. We provide Smart PoE Managed, Fully Managed, Chassis & Unmanaged switches. Our Switching Solutions offers include a wide range of Industrial Switches & Transceivers solutions.

\*Made In India products are available in specific part codes.

## ENTERPRISE STRUCTURED CABLING SYSTEMS



**STRUCTURED  
CABLING  
(COPPER & FIBER)**



- **COPPER** : CAT 6 and CAT 6A Solid Cables, Keystones, Patch Panels, Patch Cords, PoE Solutions, Industrial Field Plugs,

## CHANNEL STRUCTURED CABLING SYSTEMS



- **COPPER** : CAT 5E , CAT 6 and CAT 6A Solid Cables, Keystones, Patch Panels, Patch Cords, Face Plates, Tools, RJ45 Plugs and Surface Mount Box
- **FIBER** : Cables, Patch Cords, Pigtails, LIUs and Adapters
- **FTTH** : Cable, Splitters, FDBs, Home Termination Box and ODFs.

Our future proof cabling Solutions are here to take upon the IT networking needs of future-ready enterprises, Small and Mid-size Businesses. We provide high bandwidth copper & fiber structure cabling products that support your high bandwidth IT infrastructure for present and next-generation technologies, boosting your growth.

## VALUE ADDITION



**DIGISOL INSTITUTE OF  
TECHNICAL TRAINING**



**CASH KARO  
(LOYALTY PROGRAM)**

**DIGICARE**

helpdesk@digisol.com  
1800 209 3444

DIGISOL is one of the leading IT Networking brands of India. Digisol innovates and offers top-notch end-to-end IT networking products, solutions and design assistance that cater to Enterprise, Mid-market as well as SOHO segments. DIGISOL has been spearheading government's "Make In India" initiative through its made in India products and solutions.

The Digisol offerings are here to upgrade



Smart Cities



Manufacturing



Healthcare



Telecom



Real Estate



Hospitality



Banking



Surveillance



Data Centers



IT/ITES



Retail



Education

\*Made In India products are available in specific part codes.



## ENTERPRISE STRUCTURED CABLING SYSTEMS

### COPPER

☞ Solid Cables .....	12
☞ Keystones .....	13
☞ Patch Panel .....	14
☞ Patch Cords .....	15
☞ Industrial Field Plugs .....	17



## CHANNEL STRUCTURED CABLING SYSTEMS

### COPPER

☞ Solid Cables .....	19
☞ Keystones .....	20
☞ Patch Panels .....	22
☞ Patch Cords .....	24
☞ Face Plates .....	25

☞ Surface Mount Box .....	27
☞ Tools & Connector .....	27

### FIBER

☞ Cables .....	28
☞ Patch Cords .....	30
☞ Pigtails .....	30
☞ LIUs .....	32
☞ Adapters .....	33

### FTTH

☞ Splitters .....	34
☞ Fiber Distribution Box .....	34
☞ Connectors .....	35
☞ Outlet .....	35
☞ Drop Cable .....	35

\*Made In India products are available in specific part codes.





## ENTERPRISE STRUCTURED CABLING SYSTEMS



## CHANNEL STRUCTURED CABLING SYSTEMS



Manufacturing Since 1986

TRUSTED MADE IN INDIA IT NETWORKING BRAND

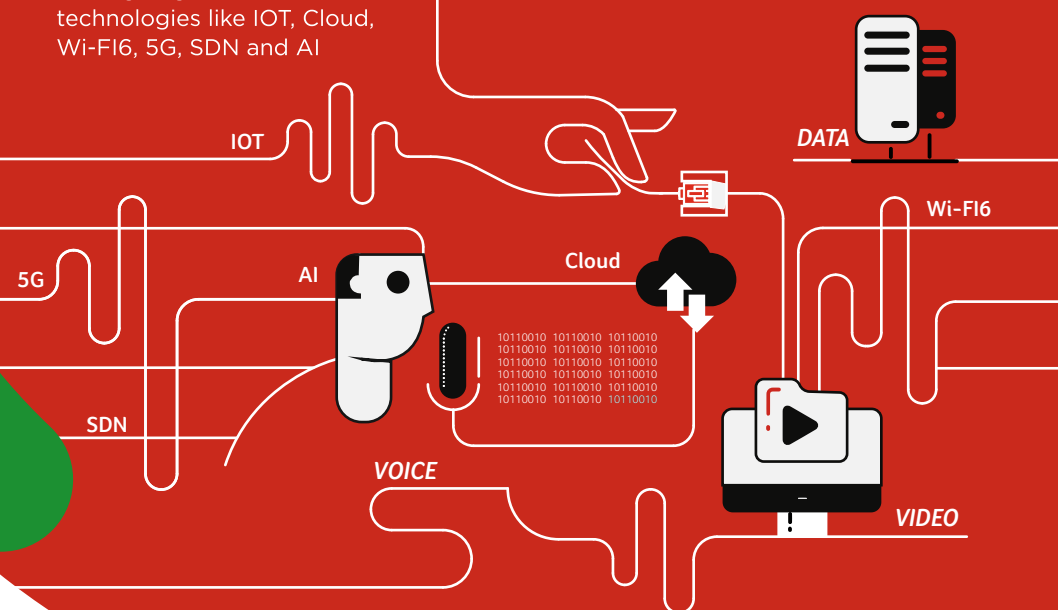
\*Made In India products are available in specific part codes.



# VOICE VIDEO DATA

A future ready enterprise is equipped with a structured cabling infrastructure that converges voice, video, data at Xtreme performance for cutting edge, advanced technologies like IOT, Cloud, Wi-Fi6, 5G, SDN and AI

## ENTERPRISE STRUCTURED CABLING SYSTEMS



TRUSTED MADE IN INDIA IT NETWORKING BRAND



## Structured Cabling DNA of your IT Network Infrastructure

In today's digital world where high bandwidth connectivity & security is an important factor for businesses, having a well designed structured cabling system in place is very crucial. However, many organizations, hospitals, schools, colleges, banks, corporate parks, large format retail (LFR) stores and government campuses usually overlook the most vital element – Structured Cabling, while implementing technology. A well designed Enterprise Structured Cabling System acts as the backbone that provides trouble-free & consistent business operations, increases efficiency, optimizes scalability and accelerates return on investment at an Xtreme speed and performance.

Keeping pace with the evolving technological advancements, Digisol provides top notch Enterprise structured cabling solutions under ConvergeX that supports your IT infrastructure for present and next generation data communication services, applications and technologies like IOT, Cloud, Wi-Fi6, 5G, SDN and AI.

ConvergeX offerings include end-to-end Enterprise structured solutions like high quality Solderless & Toolless Keystones, Solderless and Staggered Patch Panels, Patch Cords, Industrial Field Plugs and Data Centre Structured Cabling components which are PoE+ compliant as well!!

All products are  &  certified products.  
Intertek

THINK ENTERPRISE. THINK DIGISOL!

\*Made In India products are available in specific part codes.

\*Made In India products are available in specific part codes.



## Enterprise Structured Cabling

### COPPER SOLID CABLE

#### SOLID CABLE, CAT6 UTP, 4 PAIR, GREY, 305M DGCE-SC6U4F-3GB

Higher bandwidth better performance

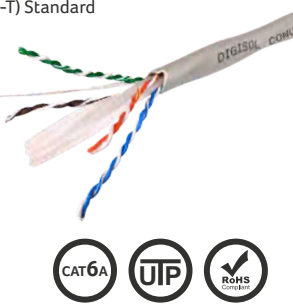
- For Data Centre Applications
- High bandwidth upto 600 MHz
- 4 Pair 23 AWG
- Available in FRPVC/LSZH jacket
- High speed transmission of Voice, Video and Data on LAN
- Also available in Blue colour



#### SOLID CABLE, CAT6A UTP, 4 PAIR, 23 AWG, OVAL SHAPE, GREY, 305M DGCE-SCAU4F-3GB

Reduces Alien cross talk with unique oval design and pair locking cross-filler

- Designed for Horizontal
- Cabling Networks for Transmission of High Speed Data, Digital and Analog, Voice and Video Signals On Lans
- Supports Gigabit Ethernet (10 GBase-T) Standard
- Suitable for Noisy Environments, High EMI Interference Surroundings
- Complies to the Requirement of ANSI/TIA-568-C.2 and ISO/IEC 11801
- Bandwidth Performance Upto 600MHz



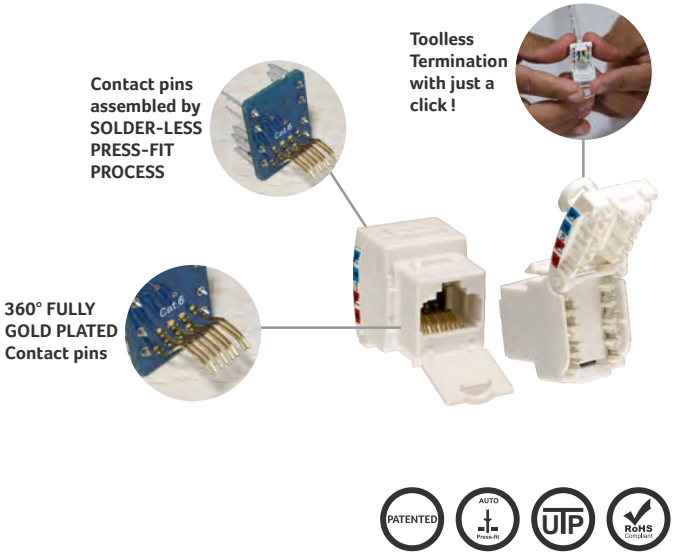
## Enterprise Structured Cabling

### COPPER KEYSTONES

#### CAT6 UTP SOLDERLESS TOOLLESS KEYSTONES DGCE-KS6UWH-A

Efficient Rotation Design Tool Free, Press with Click to Terminate Wires

- Fully (360 degree) covered in 30 microns Gold plated Contact pins which are assembled with Solderless process
- Cable Holder with Strain Relief function **Fast, Easy, Reliable Termination**
- Patented Toolless type design with contact pins assembled with Solder-less Press-fit process
- No oxidation of Contact pins due to absence of soldering flux leading to longer life
- High impact Polycarbonate Grade plastic, UL-94V-O rated
- Removable shutter option
- Supports both RJ11/RJ12 plug
- Plug Insertion Life : 750 Cycles minimum
- Available in CAT 6 and CAT 6A



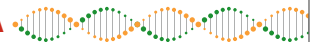
#### TOOLLESS CLASS EA/ CAT6A STP KEYSTONE JACK (AUTO PRESS FIT) DGCE-KSASMS-A

Auto press fit keystone with cable management

- RJ-45 Industrial Field plugs for field terminations
- CAT6A rated
- 360 degrees connection option available
- 8 different locking angle positions possible along the 360 degree path
- High impact flame retardant plastic
- PoE+ ready
- Accept Cable : #26~22 AWG solid/ 7 stranded wire



\*Made In India products are available in specific part codes.





## Enterprise Structured Cabling

### COPPER PATCH PANELS

#### **SOLDERLESS PATCH PANEL DGCE-PP6U2L-1B-SL** 24 PORT CAT6 UTP 90°

CAT6 patch panel with CAT6A performance

- Contacts pins assembled in **Patented PCBs** by Solder-less process leading to higher efficiency
- Flexible Square Contact pins, with 360 degree covered in 30 microns Gold plating, better for POE Application
- IDC accommodates **22~26 AWG** Stranded and Solid wires
- **No oxidation** of contact pins due to absence of soldering flux leading to longer life
- Higher performance with **better transmission** at electron level
- 6 Port Jack configuration specially designed & molded in Polycarbonate **Fire retardant material** and Removable Module Design
- **90 Degree Punch-Down design** for easy assembly on site
- Exceeds ANSI/TIA 568-C.2 standard, and supports 1000-BASE-T
- 1U Patch Panel to mount In any Standard Rack

Top Entry Punch Down design with Removable Modules

Contact pins assembled on Patented PCBs by SOLDER-LESS PRESS-FIT PROCESS

360° FULLY GOLD PLATED Contact pins



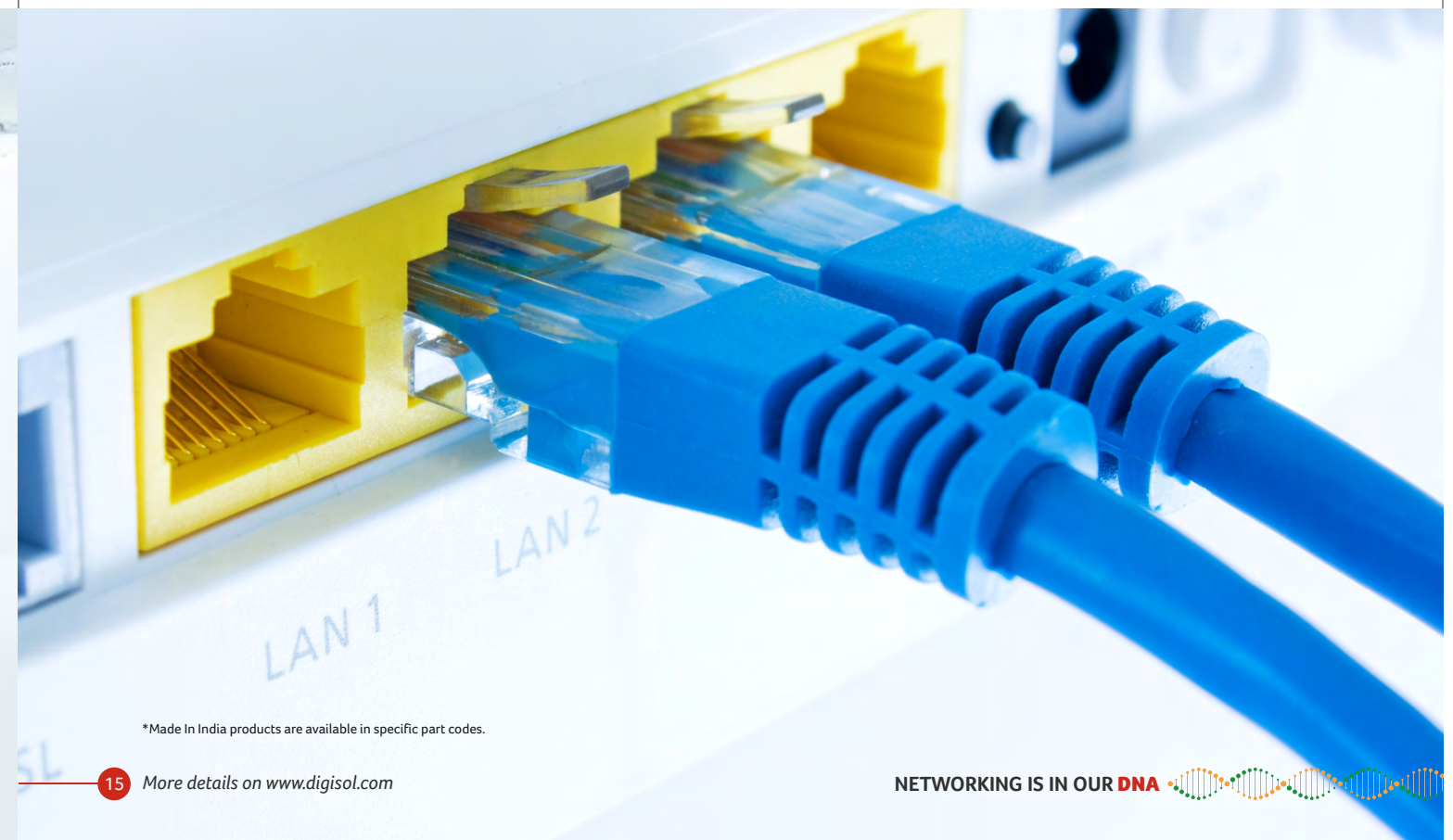
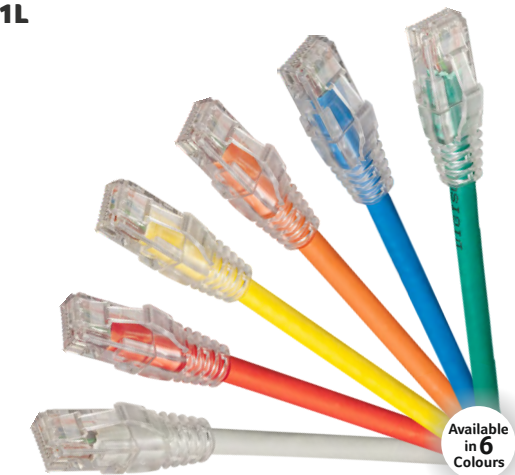
## Enterprise Structured Cabling

### COPPER PATCH CORDS

#### **CAT6 UTP, LSZH PATCH CORDS DGCE-PC6UMGY-1L**

Elegant aesthetic look with transparent boots and better transmission parameters

- Available in LSZH jacket- reduces Toxic gasses emitted during combustion
- RJ45, 8P8C, 3 pronged fork 50μ" gold plated contacts
- 100% factory tested
- Transparent boot cable assemblies
- Available in 6 different colors (as per MOQ)



\*Made In India products are available in specific part codes.

15 More details on [www.digisol.com](http://www.digisol.com)

NETWORKING IS IN OUR DNA



## Enterprise Structured Cabling

### COPPER PATCH CORDS

#### LOCKABLE PATCH CORDS, CAT6, UTP, LSZH DGCE-PC6UMGY-1L-LK

Secured patch cord with locking key for data centre applications

- Comes with lock and key design for data centre security needs
- 24 AWG
- LSZH jacket
- 50 micron gold plated RJ45 contact pins



#### ULTRA HD PATCH CORDS DGCE-PC6UMGY-1L-UHD

Securing network with Ultra High density Patch cords

- UHD Patchcords with Pull-Back Tool
- Arrests data disconnections in high density patch panels due to mishandling.
- Patchcord Jacket is of LSZH material
- Fully (360 deg) plating on Contacts with 50 micron gold for best conductivity performance
- Suitable for Data Centre applications.



## Enterprise Structured Cabling

### COPPER INDUSTRIAL FIELD PLUGS

#### INDUSTRIAL FIELD PLUGS

For DGCE-RJPSCA-Z industrial field plug, no cable manager is needed - patch cords can be routed in the design itself due to 8 different lockable positions

- Direct connectivity from switch to the end user's device
- PoE+ compliant
- Toolless termination
- Solderless Process used for assembly of pins on PCBs leading to longer life and no oxidation due to absence of flux

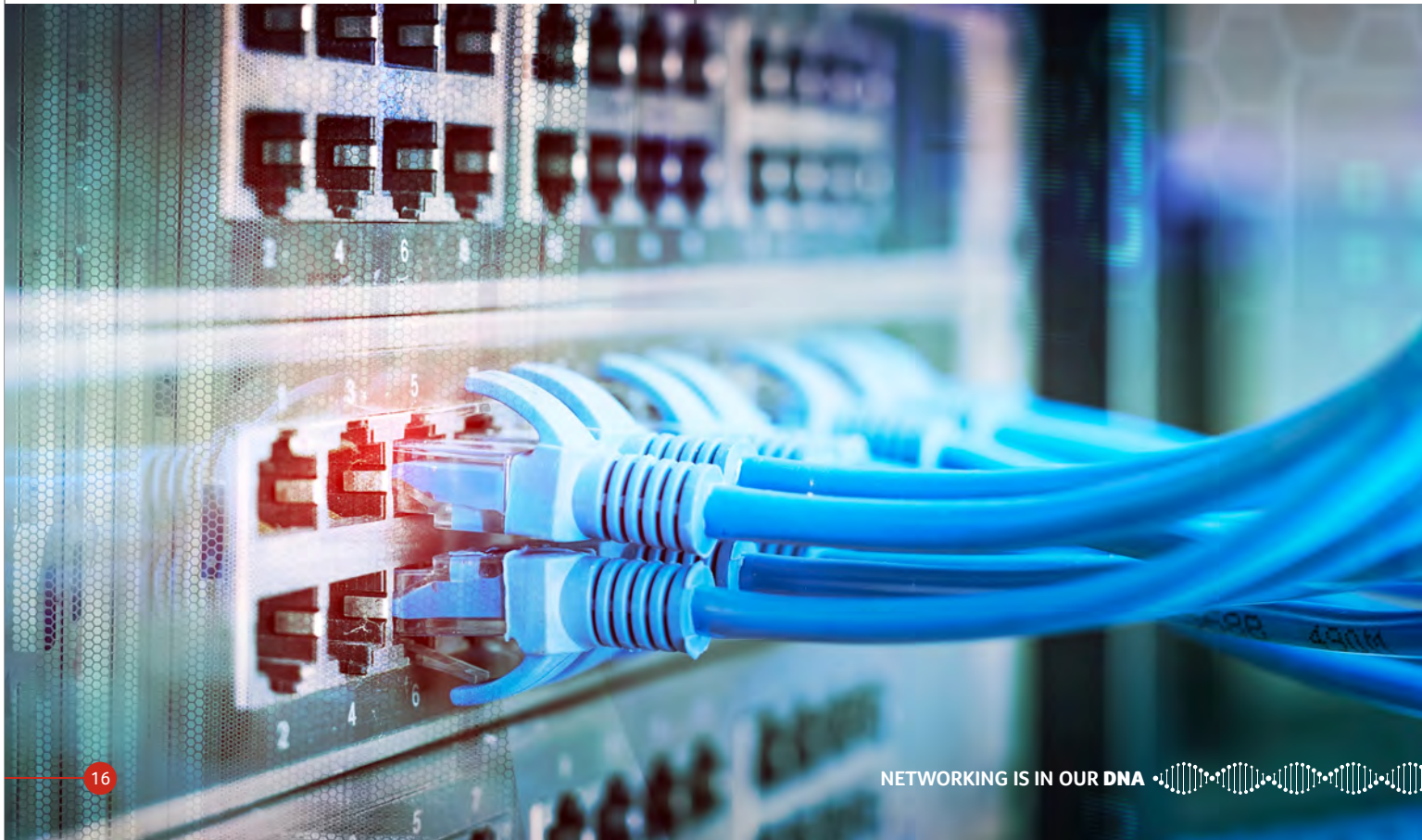
**DGCE-RJPUC6-A**  
**INDUSTRIAL FIELD RJ45 PLUGS,**  
**CAT 6 UTP, 180°, 3 PIECE, PoE+**



**DGCE-RJPSCA-A**  
**INDUSTRIAL FIELD RJ45 PLUGS,**  
**CAT 6A STP, 180°, 5 PIECE, PoE+**



**DGCE-RJPSCA-Z**  
**INDUSTRIAL FIELD RJ45 PLUGS,**  
**CAT 6A STP, 360°, 7 PIECE, PoE+**





## CHANNEL STRUCTURED CABLING SYSTEMS

Digisol's Channel SCS Structured Cabling systems offers end to end solutions in CAT5e, CAT6 and CAT6A for SMBs, SMEs and SOHO needs. The products are made in India and offer great performance at affordable value! The offerings include Solid Cables, Keystone, Patch panels, Faceplates, Patch cords and RJ 45 plugs.

TRUSTED MADE IN INDIA IT NETWORKING BRAND

## Channel Structured Cabling

### COPPER SOLID CABLES

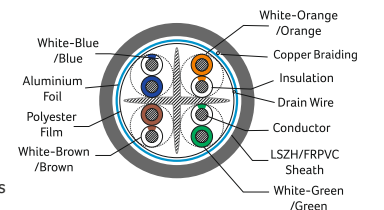
#### CAT6 UTP, 4 PAIR, 23 AWG, GREY, 305M SOLID CABLE DGC-SC6U4F-3GB

- 4 Pair 23 AWG
- UTP FR-PVC Cable
- Horizontal Cabling Networks
- Transmission Of High Speed Data
- Digital and Analog
- Voice and Video Signals On LANs



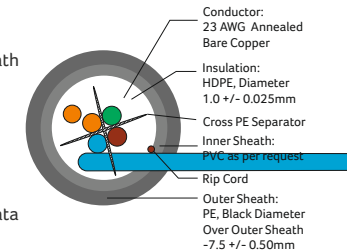
#### CAT6 SFTP, 4 PAIR, 23 AWG, GREY, 305M SOLID CABLE DGC-SC6F4F-3GB

- 4 Pair 23 AWG
- SFTP FR-PVC Cable
- Horizontal Cabling Networks
- Transmission Of High Speed Data
- Digital and Analog
- Voice and Video Signals On LANs



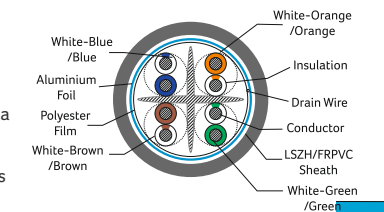
#### CAT6 UTP, OUTDOOR DOUBLE JACKET, 4 PAIR, 23 AWG, BLACK, 305M SOLID CABLE DGC-SC6O4F-3GB

- 4 Pair 23 AWG
- UTP FR-PVC Cable
- Inner Sheath PVC & Outer Sheath Black PE
- Rugged Double sheath construction
- Horizontal Cabling Networks
- Transmission Of High Speed Data
- Digital and Analog Voice and Video Signals On LANs



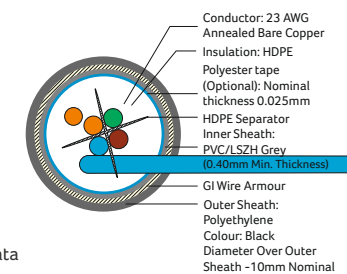
#### CAT6A FTP, 4 PAIR, 23 AWG, GREY, 305M SOLID CABLE DGC-SCAF4F-3GB

- 4 Pair 23 AWG
- FTP FR-PVC Cable
- Horizontal Cabling Networks
- Transmission Of High Speed Data
- Digital and Analog
- Voice and Video Signals On LANs



#### CAT6 UTP, OUTDOOR ARMoured CABLE, 4 PAIR, 23 AWG, BLACK, 305M DGC-SC6A4F-3GB

- 4 Pair 23 AWG
- UTP FR-PVC Cable
- Inner Sheath PVC, ECCS Tape Armour with Outer Sheath Black PE
- Rugged Double sheath construction
- Horizontal Cabling Networks
- Transmission Of High Speed Data
- Digital and Analog Voice and Video Signals On LANs



#### CAT5E UTP, 4 PAIR, 24 AWG, GREY, 305M SOLID CABLE DGC-SC5U4F-3GB

- 4 Pair 23 AWG
- UTP FR-PVC Cable
- Horizontal Cabling Networks
- Transmission Of High Speed Data
- Digital and Analog
- Voice and Video Signals On LANs



\*Made In India products are available in specific part codes.

\*Made In India products are available in specific part codes.



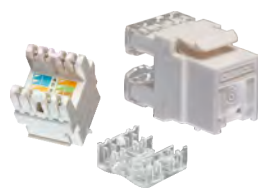


## Channel Structured Cabling

### COPPER KEYSTONES

#### **CAT6** UTP, 180°, COLLAPSIBLE DOOR, PUNCH DOWN TYPE KEYSTONE DGC-KS6UWH-CD

- Small & Exquisite form factor
- Skilled Design on Jack and PCB
- High and Reliable Performance
- Ergonomic Design & Easy Termination
- Support Both RJ11 and RJ12 Plug
- With Collapsible Shutter



#### **CAT6** UTP, 180°, WITHOUT DOOR, PUNCH DOWN TYPE KEYSTONE DGC-KS6UWH-C (Link Series)

- High and Reliable Performance
- Skilled Design on Jack and PCB
- Small & Exquisite form factor
- Keystone jack can be easily terminated by standard punch down tool
- Ergonomic Design and Easy Termination



## Channel Structured Cabling

### COPPER KEYSTONES

#### **CAT6** UTP, WITHOUT DOOR KEYSTONE DGC-KS6UWH-B

- Small & Exquisite form factor
- Skilled Design on Jack and PCB
- High and Reliable Performance
- Ergonomic Design & Easy Termination
- Support Both RJ11 and RJ12 Plug
- Available in Cat6 and Cat6A



#### **CAT6** STP, 180°, TOOLLESS TYPE KEYSTONE DGC-KS6SMS-A

- Zinc-casted Shell Covered with the Nickel Plating
- Provide Outstanding Performance to Outside EMI • Secures Data
- Skilled Design on Jack and PCB
- High and Reliable Performance
- Ergonomic Design and Easy Termination
- Available in Cat6A



\*Made In India products are available in specific part codes.

\*Made In India products are available in specific part codes.

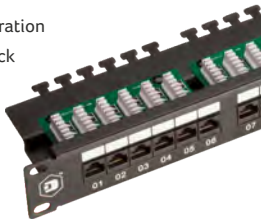


Channel Structured Cabling

COPPER PATCH PANELS

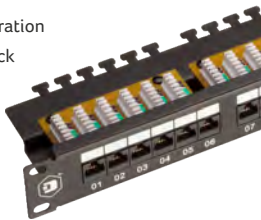
**CAT6 UTP, 24 PORT, 90° PATCH PANEL**  
**DGC-PP6U2L-1B**

- 90 Degree (Top Entry) Punch Down Design
- Built in Rear Cable Management
- 6x4 Module Specially Designed Jack Configuration
- 1U Patch Panel to Mount in any Standard Rack
- Easy Port Labeling Identification Provision
- Accommodates 22~26 AWG Stranded and Solid Wires



**CAT6A UTP, 24 PORT, 90° PATCH PANEL**  
**DGC-PPAU2L-1B**

- 90 Degree (Top Entry) Punch Down Design
- Built in Rear Cable Management
- 6x4 Module Specially Designed Jack Configuration
- 1U Patch Panel to Mount in any Standard Rack
- Easy Port Labeling Identification Provision
- Accommodates 22~26 AWG Stranded and Solid Wires



**CAT6 FTP, 24 PORT, 90° PATCH PANEL**  
**DGC-PP6U2L-1B**

- 90 Degree (Top Entry) Punch Down Design
- Removable Module Design
- 8x3 Module Specially Designed Jack Configuration
- 1U Patch Panel to Mount in any Standard Rack
- Easy Port Labeling Identification Provision
- Accommodates 22~26 AWG Stranded and Solid Wires



**CAT6A FTP, 24 PORT, 90° PATCH PANEL**  
**DGC-PPAF2L-1B**

- 90 Degree (Top Entry) Punch Down Design
- Removable Module Design
- 8x3 Module Specially Designed Jack Configuration
- 1U Patch Panel to Mount in any Standard Rack
- Easy Port Labeling Identification Provision
- Accommodates 22~26 AWG Stranded and Solid Wires



**CAT6 UTP, 24 PORT, 180° PATCH PANEL**  
**DGC-PP6U2L-1A**

- 180 Degree Punch Down Design
- 1U Patch Panel to Mount in any Standard Rack
- Easy Port Labeling Identification Provision
- Accommodates 22~26 AWG Stranded and Solid Wires



**CAT6A UTP, 24 PORT, 180° PATCH PANEL**  
**DGC-PPAU2L-1A**

- 180 Degree Punch Down Design
- 1U Patch Panel to Mount in any Standard Rack
- Easy Port Labeling Identification Provision
- Accommodates 22~26 AWG Stranded and Solid Wires



\*Made In India products are available in specific part codes.

Channel Structured Cabling

COPPER PATCH PANELS

**CAT6 UTP, 24 PORT, 180° PATCH PANEL**  
**DGC-PP6U2L-1C (Link Series)**

- 180 Degree punch down design for network terminations
- Ease of cable routing is assured with a rear cable management
- 6x4 module type designed jack configuration
- Easily removable module design
- 1U standard 19 inch rack mounted
- Easy port labeling identification
- Compatible with T568A or T568B wiring schemes
- Accommodates 22~26 AWG Stranded and Solid Copper Wires



COPPER UNLOADED PATCH PANEL

**UNLOADED UTP, 24 PORT, PATCH PANEL**  
**DGC-PPXU2U-1X**

- Front Removable Module Design
- 1U Patch Panel to Mount in any Standard Rack
- Easy Port Labeling Identification Provision
- Accommodates 22~26 AWG Stranded and Solid Wires



**UNLOADED UTP, 24 PORT, ANGLED BLANK PATCH PANEL**  
**DGC-PPXU2U-1XA**

- Robust and Elegant designed panel
- Compatible with standard size UTP keystones jacks
- Ease of cable routing is assured with a rear cable management
- Keystones can be assembled and disassembled easily on the panel
- 1U standard 19 inch rack mounted
- Angular shape for easy routing of patchcords when assembled in racks
- Easy port labeling identification



\*Made In India products are available in specific part codes.





Channel Structured Cabling

COPPER PATCH CORDS

**CAT6 UTP, LSZH PATCH CORD**  
**DGC-PC6UMBL-1L**

- Available in LSZH Sheath Jacket-Reduced Toxic Gasses Emitted During Combustion
- RJ45, 8P8C, 2 FORK 30μ" Gold Plated Contacts
- 100% Factory Tested
- Transparent Boot Cable Assemblies
- Available Colors: (as per MOQ) Grey, Blue, Green, Yellow, Orange, Red



**CAT6 STP, LSZH PATCH CORD**  
**DGC-PC6SMGY-1L**

- Available in LSZH Sheath Jacket- Reduced Toxic Gasses Emitted During Combustion
- RJ45, 8P8C
- 100% Factory Tested
- Shielded Plug Boot Cable Assemblies
- Provides Better Mechanical Properties



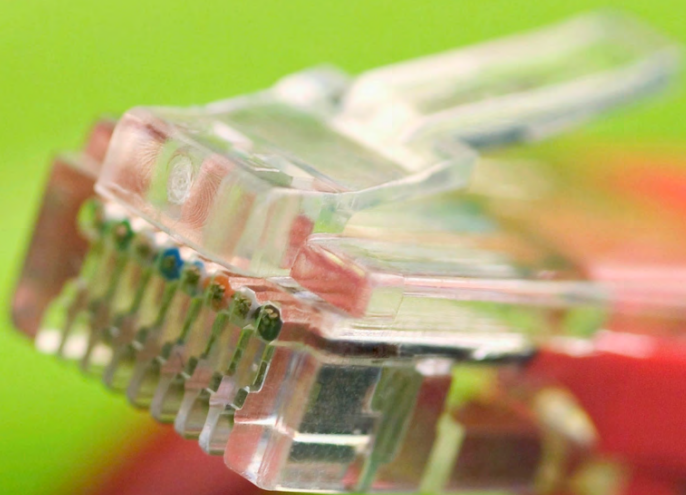
**CAT6 UTP, FRPVC PATCH CORD**  
**DGC-PC6UMBL-1F**

- Available in FRPVC Jacket
- RJ45, 8P8C, 2 FORK 30μ" Gold Plated Contacts
- 100% Factory Tested
- Transparent Boot Cable Assemblies
- Available Colors: (as per MOQ) Grey, Blue, Yellow



**CAT6A UTP, LSZH PATCH CORD**  
**DGC-PCAUMGY-1L**

- Available in LSZH Sheath Jacket-Reduced Toxic Gasses Emitted During Combustion
- RJ45, 8P8C, 2 FORK 30μ" Gold Plated Contacts
- 100% Factory Tested
- Transparent Boot Cable Assemblies



Channel Structured Cabling

COPPER UNLOADED FACE PLATE

**TWO PIECE SINGLE PORT, FACE PLATE**  
**MODULAR STRAIGHT SHUTTERED**  
**DGC-FPXSMSS-A**

- Two Piece design
- Shutter on Face Plate
- Elegant hidden-screw design
- Made In India



**ONE PIECE SINGLE PORT, FACE PLATE**  
**DGC-FPXSMSX-B**

- One Piece design
- Screw caps to hide screws
- Made In India



**TWO PIECE DUAL PORT, FACE PLATE**  
**MODULAR STRAIGHT SHUTTERED**  
**DGC-FPXDMSX-A**

- Two Piece design
- Shutter on Face Plate
- Elegant hidden-screw design
- Made In India



**ONE PIECE DUAL PORT, FACE PLATE**  
**DGC-FPXDMSX-B**

- One Piece design
- Screw caps to hide screws
- Made In India



**TWO PIECE QUAD PORT, FACE PLATE**  
**MODULAR STRAIGHT SHUTTERED**  
**DGC-FPXQMSS-A**

- Two Piece design
- Shutter on Face Plate
- Elegant hidden-screw design
- Made In India



**ONE PIECE QUAD PORT, FACE PLATE**  
**DGC-FPXQMSX-B**

- One Piece design
- Screw caps to hide screws
- Made In India



\*Made In India products are available in specific part codes.





Channel Structured Cabling

COPPER FACE PLATE

ONE PIECE SINGLE PORT, FACE PLATE  
DGC-FPXSMSS-C (Link Series)

- One piece design
- Shutter on Face Plate
- Robust and Installer friendly design
- Wall flush installation
- Ease in port identification labelling
- Ease in snap in and out of RJ45 keystone connector



ONE PIECE DUAL PORT, FACE PLATE  
DGC-FPXXDMSS-C (Link Series)

- One piece design
- Shutter on Face Plate
- Robust and Installer friendly design
- Wall flush installation
- Ease in port identification labelling
- Ease in snap in and out of RJ45 keystone connector



Channel Structured Cabling

COPPER UNLOADED SURFACE MOUNT BOX

UNLOADED SURFACE MOUNT BOX  
DGC-SBXXXXX-A

- Robust and installer friendly design
- Secure and protect your wire with our durable wall box
- Easy to install



UNLOADED SURFACE MOUNT BOX,  
CONCEALED TYPE DGC-SBXXXXX-B

- Robust and installer friendly design
- Secure and protect your wire with our durable wall box
- Easy to install
- Concealed Type



COPPER TOOLS AND RJ-45 CONNECTOR

TOOL CABLE STRIPPER WITH CUTTER FOR  
LAN (UTP/STP) DGC-3013ASTH

- Light weight, compact stripper, simple to operate
- Strips UTP /STP wire and multi conductor cable dimension
- Uses adjustable knob for setting different insulation diameters
- Provides with cable cutting function



TOOL IMPACT TOOL WITH BLADES FOR  
110 & KRONE IDC DGC-3013AMT02K

- Impact Tool with interchangeable blades
- 110, 66 Block and Krone/ADC formats and blades
- User adjustable impact force with dial in the handle
- Extra Blade Storage in handle
- Heavy Duty



TOOL CRIMP TOOL WITH TESTER  
DGC-CRMTS

- Saves time and makes installing LAN cables easy
- Multipurpose tool efficiently cuts and strips LAN cables up to 12 mm in diameter
- Wire crimper is compatible with all RJ45, RJ11, RJ12 modular plug types
- Ergonomically designed with non-slip handles for secure hand grip
- Built-in cable tester identifies wiring faults
- Immediately Test or Debug Newly Crimped or Existing In-Wall Network or Telecom Cables



RJ-45 CONNECTOR CAT 5E, UTP PLUGS,  
3 PRONG DGC-RJ1UC5-C

- RJ-45 modular plugs for Local Area Network (LAN) and computer applications
- Suitable for Solid or Stranded UTP cables
- 3-Prong Design for accurate termination
- Transparent



\*Made In India products are available in specific part codes.

More details on [www.digisol.com](http://www.digisol.com)

NETWORKING IS IN OUR DNA

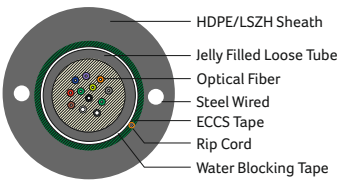


Channel Structured Cabling

FIBER CABLES

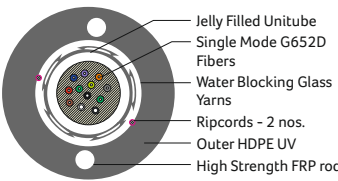
UNITUBE SINGLE MODE  
ARMOURED CABLE DGF-CAS2OUSH-06

- Suitable for Outdoor Network Direct Burial
- Polyester based yarns below Armour tape for easy ripping
- Thermoplastic Material Tube
- Excellent Water Proof Layer and Moisture Resistance
- Excellent Crush Resistance Performance



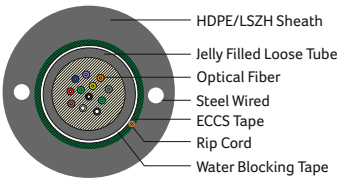
UNITUBE MULTI-MODE  
UN-ARMOURED CABLE DGF-CUM3OUSH-06

- Suitable for Outdoor Network Direct Burial
- Un-Armoured design with High Strength FRP's & Glass Rovings
- Thermoplastic Material Tube
- Excellent Water Proof Layer and Moisture Resistance
- Excellent Crush Resistance Performance



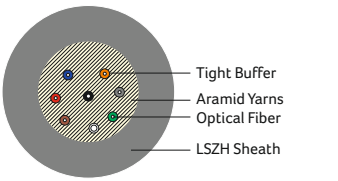
UNITUBE MULTI-MODE  
ARMOURED CABLE DGF-CUM3OMSH-06

- Suitable for Outdoor Network Direct Burial
- Polyester based yarns below Armour tape for easy ripping
- Thermoplastic Material Tube
- Excellent Water Proof Layer and Moisture Resistance
- Excellent Crush Resistance Performance



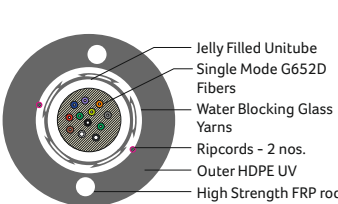
TIGHT-BUFFERED SINGLE MODE AND  
MULTI-MODE CABLE DGF-CUS2TUSH-06

- Suitable for aerial, Pipeline, Bracket Laying
- Suitable for Indoor and Outdoor Applications
- All Dielectric self supporting ADSS
- Polyester based yarns tape for easy ripping
- Excellent Crush Resistance Performance



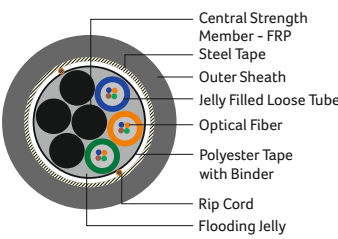
UNITUBE SINGLE MODE  
UN-ARMOURED CABLE DGF-CUS2OUSH-06

- Suitable for Outdoor Network Direct Burial
- Un-Armoured design with High Strength FRP's & Glass Rovings
- Thermoplastic Material Tube
- Excellent Water Proof Layer and Moisture Resistance
- Excellent Crush Resistance Performance



MULTI-TUBE SINGLE SHEATH  
ARMOURED CABLE DGF-CAS2OMSH-06

- Suitable for Outdoor Network Direct Burial
- Polyester based yarns below Armour tape for easy ripping
- Thermoplastic Material Tube
- Core covering Polyester Binder and Polyester tape
- Excellent Water Proof Layer and Moisture Resistance
- Excellent Crush Resistance Performance



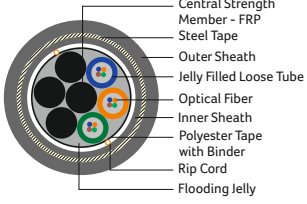
\*Made In India products are available in specific part codes.

Channel Structured Cabling

FIBER CABLES

MULTI-TUBE DOUBLE SHEATH  
ARMOURED CABLE DGF-CAS2OMDH-06

- Suitable for Outdoor Network Direct Burial
- Polyester based yarns below Armour tape for easy ripping
- Thermoplastic Material Tube
- Core covering Polyester Binder and Polyester tape
- Excellent Water Proof Layer and Moisture Resistance
- Excellent Crush Resistance Performance





Channel Structured Cabling

FIBER PATCH CORD AND PIGTAIL

PATCH CORD SINGLE MODE, LSZH  
DGF-PS2DSCSCP-3L

- LSZH Jacket-Reduced Toxic Gasses Emitted During Combustion
- 100% Factory Tested
- Available with Corning Fiber
- Available in PC/APC Type Options
- High Precision Ceramic Ferrule with Good Concentricity
- Available in Simplex and Duplex Modes



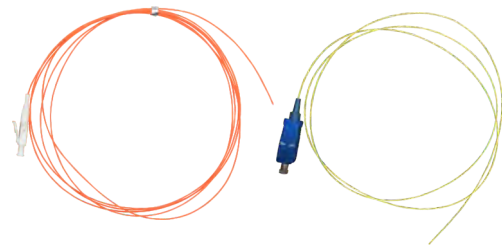
PATCH CORD MULTI-MODE, LSZH  
DGF-PM3DSCSCP-3L

- LSZH Jacket-Reduced Toxic Gasses Emitted During Combustion
- 100% Factory Tested
- Available with Corning Fiber
- Available in PC/APC Type Options
- High Precision Ceramic Ferrule with Good Concentricity
- Available in Simplex and Duplex Modes



PIGTAILS SINGLE MODE & MULTI-MODE, LSZH  
DGF-TM2SLCP-2L

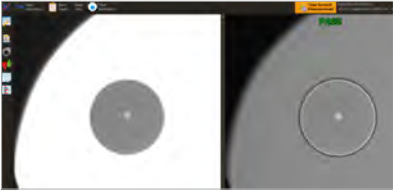
- LSZH Jacket-Reduced Toxic Gasses Emitted During Combustion
- 100% Factory Tested
- Low Insertion Loss and Return Loss
- Available with Corning Fiber
- Available in PC/APC Type Options
- High Precision Ceramic Ferrule with Good Concentricity



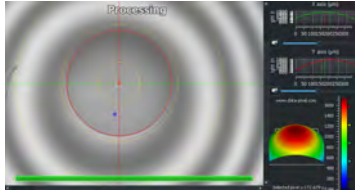
Three Level Testing

DIGISOL Fiber Patch Cords and Pigtails go through 100% testing which include three levels as shown below:

LEVEL ONE Visual inspection for scratch measurement



LEVEL TWO Interferometry Test



LEVEL THREE Optical Test

1. Insertion Loss measurement
2. Return Loss measurement

\*Made In India products are available in specific part codes.



Channel Structured Cabling

FIBER LIUs

DRAWER LIU TYPE DGF-LXXXUXX-2D

- Available in Standard 19"
- Cold Rolled Steel as Raw Material
- Consist of Top Cover and Bottom Panel
- Easy to Assemble and Disassemble
- Three Types of Input Holes
- Cable Entry Through Water Proof Cable Clamp
- 24 Simplex SC or 12 Duplex LC Adapter Interface
- Splice 24 Fibers at Most with 1 Tray



SLIDING FIBER LIU TYPE DGF-LXXXUXX-2S

- Available in Standard 19"
- Cold Rolled Steel as Raw Material
- Versatile Panel with Expandable Double Slide Rails for Smooth Sliding
- 1U Installs 2 Pcs Standard Adapter Plates at Different Types
- Front Saddles Pivot for Improved Patch Cord Routing and Organization
- Comprehensive Accessory Kit for Cable Entry and Fiber Management
- Patch Cord Bend Radius Guides Minimize Macro Bending
- Different Adapter Interface Including ST, SC, FC, LC ETC



WALL MOUNT 6 PORT COMPACT LIU TYPE DIN-RAIL DESIGN, UNLOADED DGF-LXXXUXX-1CD

- Sleek and compact design
- Lightweight aluminium body
- Wall mount and DIN-Rail design
- Available in lock and key as a standard design feature
- Ideal solutions for telecom market customers such as ISPs, MSOs and System Integrators
- Cable glands for fiber cable entry
- In-built splice holder tray



WALL MOUNT 12 PORT COMPACT LIU TYPE DIN-RAIL DESIGN, UNLOADED DGF-LXXXUXX-2CD

- Customized requirements for 12 ports addressed
- Sleek and compact design
- Lightweight aluminium body
- Wall mount design and DIN-rail design
- Perfect for Surveillance solution needs
- Cable glands for fiber cable entry
- In-built splice holder tray



WALLMOUNT FIBER LIU TYPE DGF-LXXXUXX-2W

- Cold Rolled Steel as Raw Material
- Consist of Top Cover & Bottom Panel
- Easy to Assemble and Disassemble
- Three Types of Input Holes
- Cable Entry Through Water Proof Cable Clamp
- 12 Duplex SC or LC Adapter Interface
- Patch Cord with Bend Radius Guides Minimize Macro Bending



\*Made In India products are available in specific part codes.

Channel Structured Cabling

FIBER ADAPTERS

ADAPTERS FC TYPE DGF-ASMSFC-P

- Compact Design
- Telcordia GR-326-Core
- RoHS Compliance
- Low Insertion and Return Loss
- Self Adjusting Metal Panel Clips
- Available in Flange Mount or D Hole Mount Adapter Styles
- Available in Simplex and Duplex Types



ADAPTERS LC TYPE DGF-ASMDLC-P

- Small Footprint
- Telcordia GR-326-Core
- RoHS Compliance
- Low Insertion and Return Loss
- Self Adjusting Metal Panel Clips
- Available in Simplex and Duplex Types



ADAPTERS SC TYPE DGF-ASMSSC-P

- Compact Design
- Telcordia GR-326-Core
- RoHS Compliance
- Low Insertion and Return Loss
- Available In Simplex and Duplex Types



ADAPTERS ST TYPE DGF-ASMSST-P

- Compact Design
- Telcordia GR-326-Core
- RoHS Compliance
- Low Insertion and Return Loss
- Choice of Flange Options
- Self Adjusting Metal Panel Clips





Channel Structured Cabling

FTTH SPLITTERS, FIBER DISTRIBUTION BOX

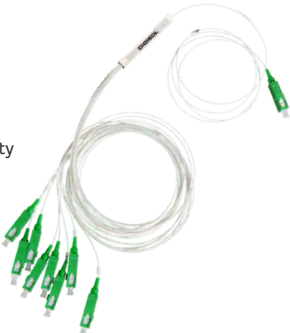
FTTH SPLITTERS, RACK TYPE  
DGF-SRSSCA1-2

- Low insertion loss
- Low Polarization Dependent Loss
- High Reliability
- Wide wavelength range
- High Return Loss and good Repeatability
- Excellent channel to channel uniformity
- Excellent Environmental Stability
- Excellent Mechanical Stability
- Telcordia GR-1221 and GR-1209



FTTH SPLITTERS, TUBE TYPE  
DGF-STSSCA1-2

- Low insertion loss
- High Reliability
- Low Polarization Dependent Loss
- High Return Loss and good Repeatability
- Wide wavelength range
- Excellent channel to channel uniformity
- Excellent Environmental Stability
- Excellent Mechanical Stability
- Telcordia GR-1221 and GR-1209



FTTH SPLITTERS, BOX TYPE  
DGF-SBSSCA1-2

- Low Polarization Dependent Loss
- Low insertion loss
- High Reliability
- Wide wavelength range
- High Return Loss and good Repeatability
- Excellent channel to channel uniformity
- Excellent Environmental Stability
- Excellent Mechanical Stability
- Telcordia GR-1221 and GR-1209



FDB FTTH FIBER DISTRIBUTION BOX,  
6 CORE DGF-DBXXX-6

- Full Enclosed & Ergonomic Design
- Meets IP65 Grade for wet-proof, water-proof and anti aging
- Hinged Splice tray for easy installation and maintenance
- Feeder cable and Drop cable fixation, Fiber Splicing, Storage and Distribution
- Separate cable pathway design
- Modular adapter holder design
- Wall Mounted or Pole mounted
- Suitable for Indoor and Outdoor Use
- Available in 8 core and 12 core



Channel Structured Cabling

FTTH CONNECTORS, OUTLET & DROP CABLE

FIELD ASSEMBLY CONNECTORS,  
FIBER OPTIC DGF-CFSSSC-A / DGF-CFSSSC-P

- DGF-CFSSSC-A SM, SC, APC Type DGF-CFSSSC-P SM, SC, PC Type
- Industry leading double V groove alignment clamping mechanism
- User friendly and cost effective
- Superior qualified standard PC, APC, UPC polishing
- Reliable and superior optical performance
- Good exchange ability and good reliability
- No electricity required
- Cable tensile test complies with GR-326-CORE
- No epoxy and polishing required
- Only three pre-assembly parts



FTTH OUTLET, BOX TYPE  
DGF-FOSSXX2-WH

- Indoor FTTH and Fiber Optic CATV Application
- Inner tray for splice sleeve
- Compact design
- Available with SC Simplex or LC Duplex
- All Modules are solderless mode



FTTH DROP CABLE  
DGF-CFS3IL-02

- Simple Structure
- Light Weight
- Novel Groove Design
- Easily Strip and Splice
- High Tensile Strength and Metal Free
- Simplified Installation and Maintenance
- LSZH and Flame Retardant Sheath
- Environment Friendly and Good Safety

