



DIGISOL®

WIRELESS AND BROADBAND

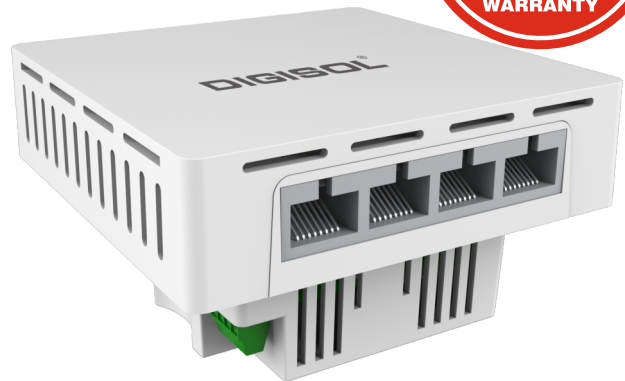
DIGISOL Wi-Fi6 11ax 1800Mbps In-Wall Wireless AP

DG-WM640WI



Key Features:-

- Upto 1800Mbps aggregate speed
- Support WiFi 6 802.11ax Standard
- 3 x Gigabit LAN Port
- * 1x Uplink PoE LAN/WAN Port
- Multimode : AP / Gateway
- Target Wake Up time (TWT)
- Support FIT / FAT Mode
- MU-MIMO and OFDMA



Introduction:-

DG-WM640WI is an 11ax Wi-Fi standard MTK Chipset high performance in wall wireless access point with multiple ports and support MU-MIMO, Wave2.0, OFDMA and Seamless Roaming.

Combined 1800Mbps Wi-Fi speed over 2 radios: 2.4GHz (600Mbps 11ax 2*2) + 5GHz (1200Mbps 2*2), equipped Gigabit WAN & LAN ports, support MU-MIMO and DL/UL-OFDMA modulation, faster Ethernet data rate and more users, then multiple users can upload or download multiple packets at same time, narrower subcarrier spacing and longer symbol time, improved the stability and data processing efficiency, publicly to be used in high density access environment such as university campus, concert venue, gymnasium, etc.

Product Features:

Wireless data rate up to 1.8Gbps. 802.11ax support 1024QAM, long OFDM symbol, 160M bandwidth and 11ax 2x2 MIMO technology, the wireless data rate up to 1.8Gbps, meet with demand of high-speed applications such as VR/ AR, 4K or 8K stream media.

802.11ax:

1024-QAM, Long OFDM Symbol, Max 160MHz bandwidth

802.11ac:

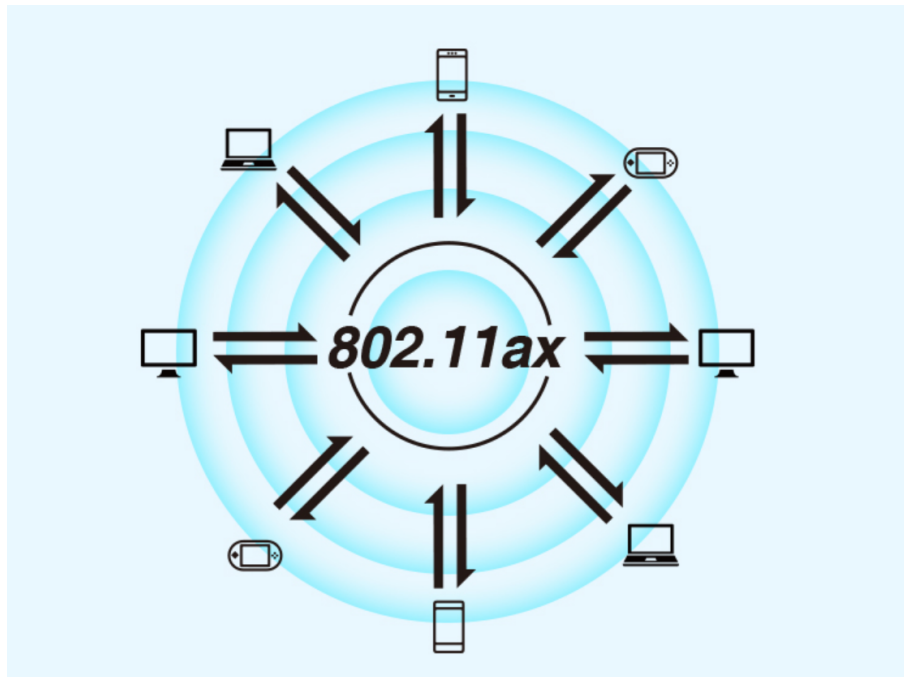
256-QAM



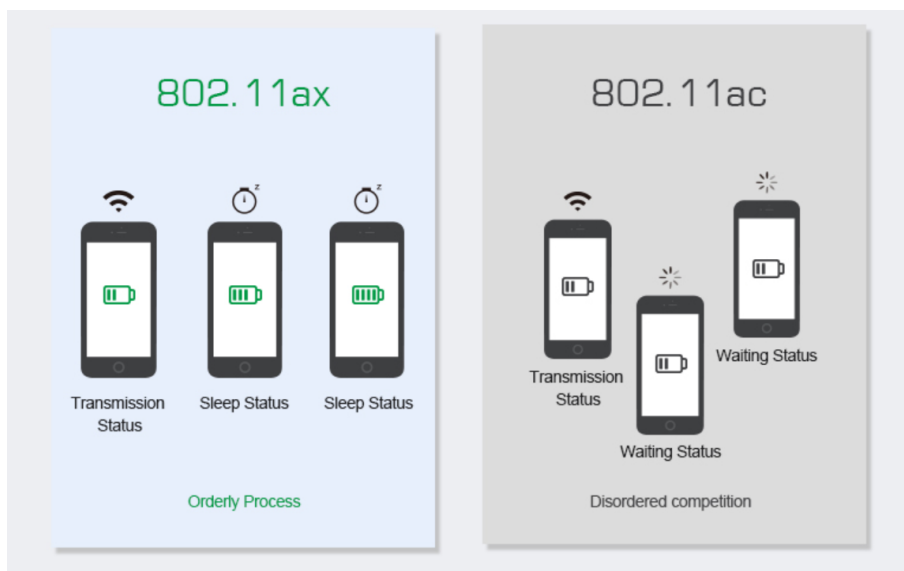
DIGISOL®

WIRELESS AND BROADBAND

DL/UL MU-MIMO. 802.11ax support both downlink MU-MIMO and uplink MU-MIMO. It can communicate with multiple end users at the same time, greatly improving the user's uplink transmission rate and the system's uplink and downlink capacity, improving the efficiency of multi-user concurrent scenarios, reducing the terminal application latency.



TWT (Target Wake-up Time). 802.11ax support TWT, allowing devices to negotiate when need to wake up, send and receive data. In additional, wireless AP can group the device into different TWT cycles, increase sleep time, reduce the device competing after wake-up, and save the device power.

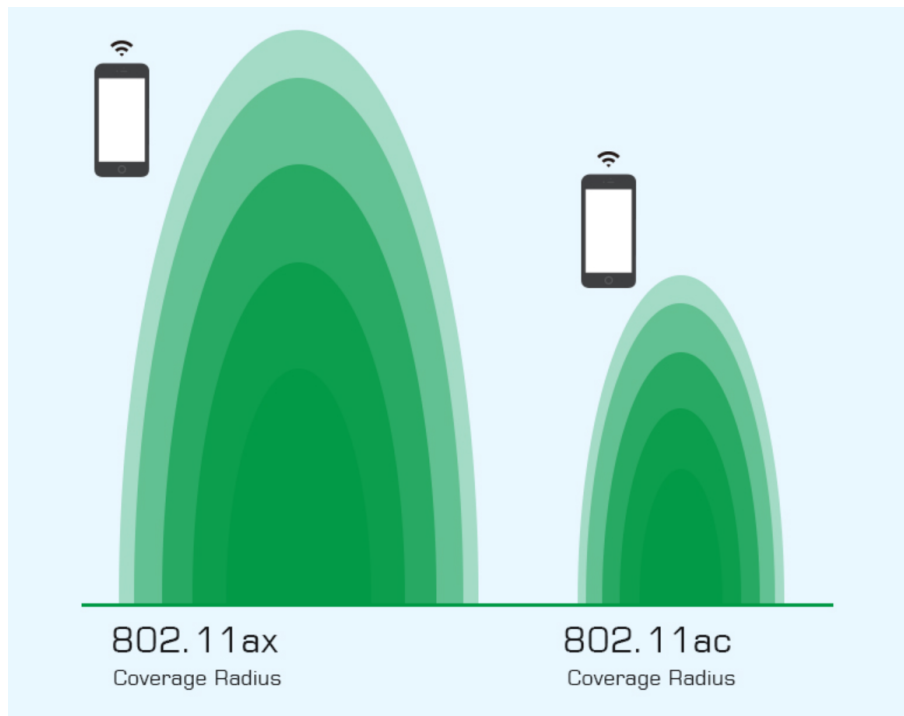




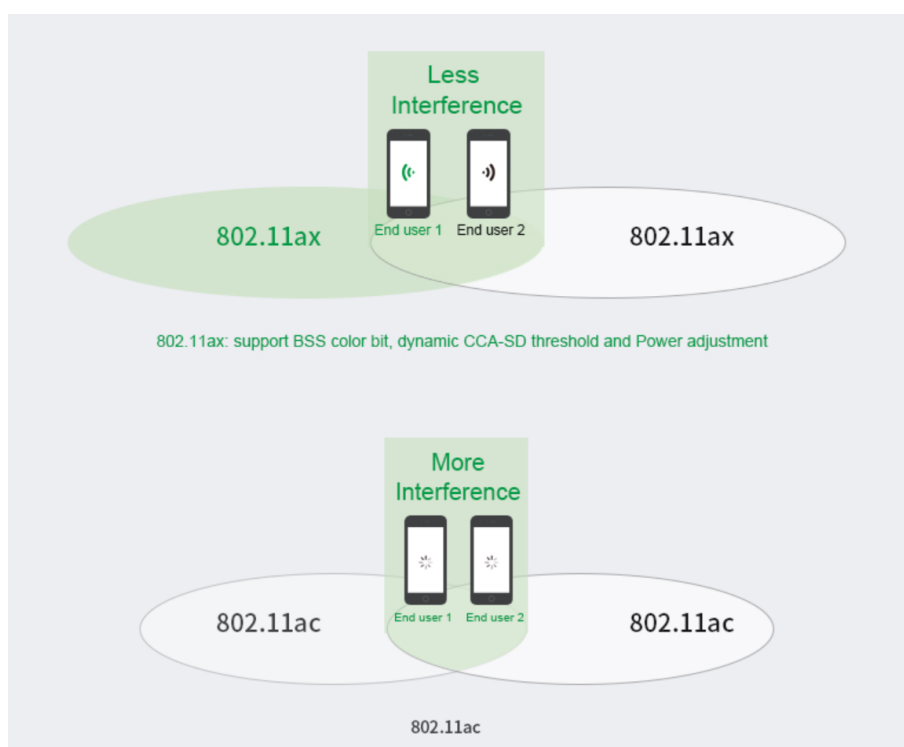
DIGISOL[®]

WIRELESS AND BROADBAND

Coverage Improvement. 802.11ax support long OFDM symbol transmission mechanism and 2MHz narrowband transmission, effectively reduced the packet loss rate and noise interference, improve the receive sensitivity and increase the WiFi coverage.



Improvement of Anti-Interference Ability. 802.11ax support BSS color bit and dynamic CCA-SD (Clear Channel Assessment Signal Detection) threshold and power adjustment, effectively alleviates the channel interference in multi-users scenarios, improve the utilization of spectrum resources.





DIGISOL[®]

WIRELESS AND BROADBAND

Technical Specifications:-

HARDWARE SPECIFICATIONS	
Chipset	MT7621DAT+MT7905DN+MT7975DN
Standard	802.11ax/ac/b/g/n
Flash	SPI NOR 16MB
Memory	128MB
2.4G Frequency	2.4GHz - 2.484GHz
2.4G Wi-Fi standard	802.11b/g/n/ac/ax
5.8G Frequency	5150~5850MHz
5.8G Wi-Fi Standard	802.11 a/n/ac/ax
Interface	1 * 10/100 /1000 RJ45 LAN/WAN Port (PoE)
	3 * 10/100 /1000 RJ45 LAN Ports
	1 * Reset button, press 10 seconds to revert to default setting
Antenna	2.4G: 2dBi; 5G: 4dBi
Data Rate	1800Mbps
End Users	120+
RF Power	2.4G≤20dBm; 5.8G≤19dBm
PoE	48V (IEEE 802.3af/at)
LED light	Sys
Power Consumption	≤ 14W
ESD	±6KV
Size	86mmX86mmX45mm

FIRMWARE SPECIFICATIONS	
Working Mode	Gateway, AP
Wireless Functions	Multiple SSID functions: 2.4GHz: 4; 5.8GHz: 4.
	Support SSID hidden
	Support seamless roaming, 802.11kvr standard.
	Support 5G Prior for a faster Ethernet.
	Wireless Security: Open, WPA, WPA2PSK_TKIPAES, WAP2_EAP,
	Support MAC filter
	Support Wi-Fi time on/off to save energy
	Support client isolation to improve the wireless stability
	Support RF power adjustable, adjust the RF power based on environment.
	Support user quantity limited, Max 64 users to access each band.
Networking Function	VLAN settings
	Access support in gateway mode



DIGISOL®

WIRELESS AND BROADBAND

Technical Specifications:-

FIRMWARE SPECIFICATIONS	
Device Management	Back-up the configuration
	Restore the configuration
	Reset to factory default
	Reboot the device: including time reboot or reboot immediately
	Admin management password modify
	Firmware upgrade
	System log
	Support firmware GUI web management, AC controller management, remote management and management
Protocols	IPv4

ANTENNA SPECIFICATIONS	
Frequency Range	2.4-2.5GHz, 5.15-5.85GHz
Impedance	50 Ohms nominal
Gain	3dBi, 4dBi
Radiation	Omni
Polarization	Linear

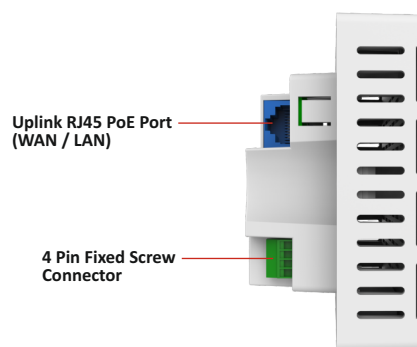
Supported on Controllers	DG-WU2008 / DG-WU2004 / DG-WU2003 / DG-WU2001
--------------------------	---

Ordering Information:-

DG-WM640WI : DIGISOL Wi-Fi6 11ax 1800Mbps In-Wall Wireless AP

*Warranty shall be subject to terms and conditions specified in the DIGISOL PRODUCT WARRANTY displayed on the website of the company.

DIGISOL Logos are trademarks and/or registered trademarks of DIGISOL SYSTEMS LIMITED. Other trademarks, product, service and company names mentioned are the property of their respective owners. Information is subject to change without notice. The actual product appearance may differ from the one shown here. © 2022 DIGISOL SYSTEMS LIMITED. All rights reserved.



DIGISOL is a Subsidiary of Smartlink Holdings Limited

DIGISOL SYSTEMS LIMITED
CITIPOINT, 7th Floor,
Unit No. B-701, B-702 & B-703,
Andheri-Kurla Road, J. B. Nagar,
Andheri (East),
Mumbai - 400059, INDIA

1800-209-3444
www.digisol.com
helpdesk@digisol.com

@DIGISOLINDIA