



1st
INDIAN
BRAND
IN IT NETWORKING

DIGISOL®

DIGISOL is advantageously poised to offer Passive (SCS) IT Networking Solutions such as Copper, Fiber and FTTH to Serve Enterprise, Mid-Market & Micro-Enterprise Segment. Our range is flexible and suitable for any architecture, so you don't have to incur high investment costs while connecting Copper to Fiber. This way you can raise your bandwidth to handle high-volume data.

DIGISOL®

DIGISOL SYSTEMS LIMITED

A Subsidiary of Smartlink Holdings Limited

Registered Office:

L-7, Verna Industrial Estate, Salcete,
Goa India - 403722

1800-209-3444 • helpdesk@digisol.com • www.digisol.com

 @DIGISOLINDIA  @digisol_solutions

 @DIGISOL_SNSL  @DIGISOL SYSTEMS LIMITED

BRAND OF:

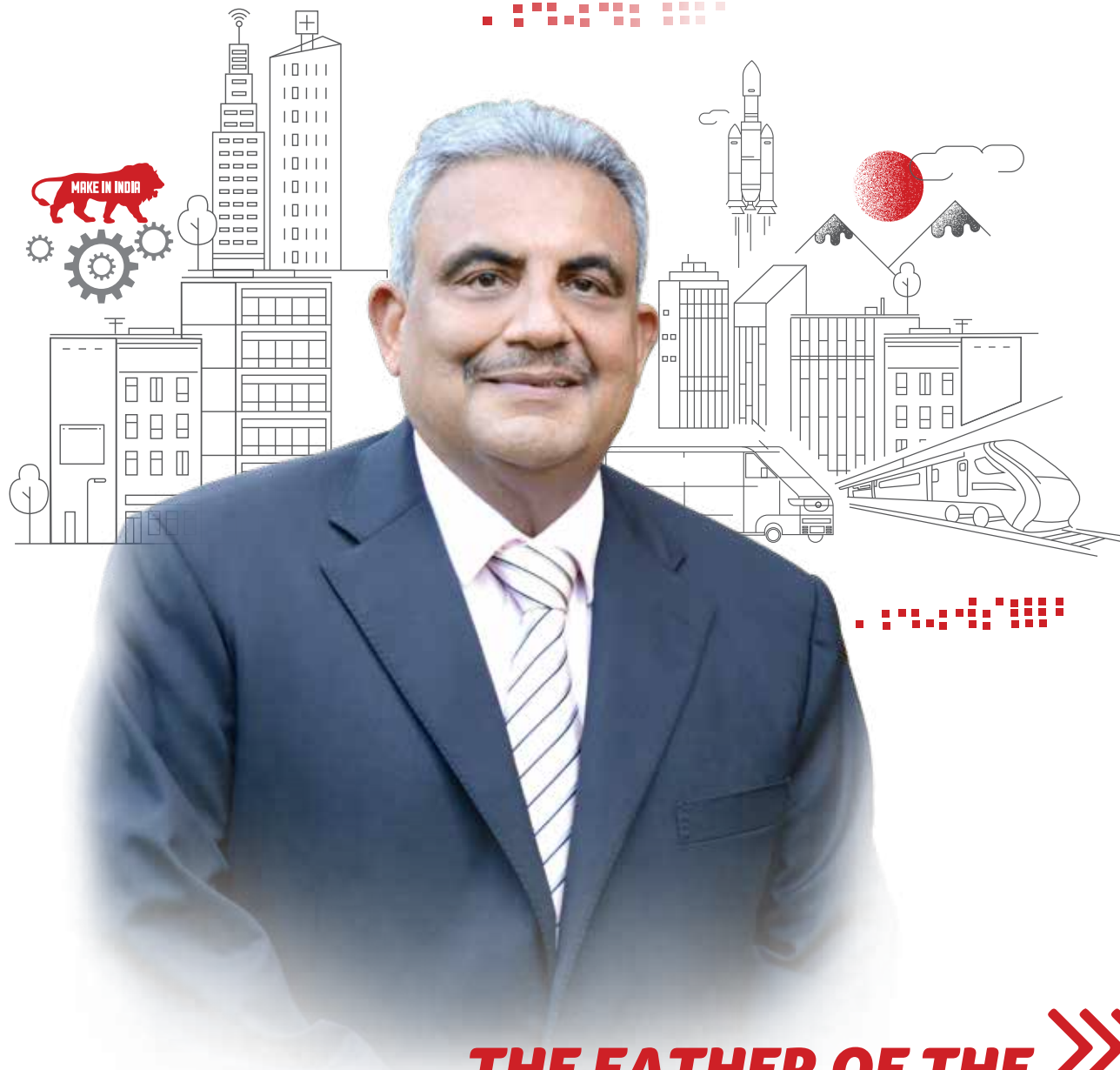
smartlink
HOLDINGS

SMARTLINK is a BSE | NSE listed company established in
1993 With Three Decades of Glorious Expertise.

**TRANSFORMING
INDIA WITH ADVANCED
NETWORKING
SOLUTIONS.**

NEXT-GEN PASSIVE (SCS) IT NETWORKING SOLUTIONS





K. R. NAIK
Executive Chairman,
Smartlink Holdings Ltd.
Chairman & Founder,
DIGISOL Systems Ltd.

THE FATHER OF THE INDIAN IT NETWORKING INDUSTRY

*Journey
so far*



Manufacturing
Personal Computers



Distribution of
networking products



Manufacturing
networking products



Manufacturing
cabling products



Joint Ventures
with International
IT brands

DIGISOL[®]

Launched
DIGISOL

Kamalaksha Rama Naik, known as K. R. Naik, is an Indian industrial engineer and a veteran of the IT networking industry with nearly five decades of experience.

He is widely regarded as the father of India's IT networking industry for pioneering the manufacturing of networking products in India and developing the channel distribution ecosystem.

Over his career, he has introduced several new business and distribution models since the 1990s and founded India's first indigenous IT networking products manufacturing company, Smartlink Network Systems Ltd.

Mr. Naik played a key role in Introducing Channel distribution of products from global brands like Cisco and Foundry and formed joint ventures with D-Link Corp. (Networking products), GIGABYTE (Motherboard), LANNER (Industrial IT Products), and SAPPHIRE UK (SCS Products).

Born in Karwar, Karnataka, on November 19, 1947, he moved to Mumbai, where he earned a Mechanical Engineering Degree, a P.G. Diploma in Industrial Engineering and Licentiate in Plastic Engineering. Also, a Business Management Course from Jamnalal Bajaj Institute Sponsored by IBM.

He began his IT career at IBM's Manufacturing plant in 1969 Mumbai, starting as a Mainframe Peripheral Assembly Engineer, gaining extensive experience in various dept. including product development and sourcing. He also developed various types of detail parts of an Indigenous Line printer.

After IBM closed its India operations in 1978, K. R. Naik joined ORG Systems Ltd., contributing to mainframe computer design and peripheral components.

In 1982, he founded Modern Components Tooling Pvt. Ltd. (MOTCO) post his IBM experience to start precession parts manufacturing, developing and reworking costly and complicated parts of IBM Peripheral locally.

With the rise of personal computers, he established Virtual Computers Pvt. Ltd. By obtaining the license to manufacture personal computers in Mumbai and he imported HOLLIS USA soldering Machines to manufacture Motherboard and offered VIRTUAL COMPUTERS as PC brand in India.

1990 as networking cards started appearing in the market, he decided to take the distribution of the D-Link brand in Mumbai and marking his entry into the IT networking market.

1993 For expansion he moved to Goa to setup large manufacturing unit under SMARTLINK by JV with D-Link Taiwan.

D-Link Corporation joined as a partner in 1995, and the company name changed to D-Link India. Over the years, manufacturing expanded to 8 SMT lines catering to various products.

Further he entered in SCS products locally with Sapphire UK (ODM Suppliers worldwide), Later he introduced DIGILINK, a local Indian brand for structured cabling systems with own developed patented contact designs of KEYSTONE.

2005 D-Link Taiwan became a brand product trading company and started sourcing from ODM suppliers, Similarly D-Link India started sourcing products from many ODM suppliers in Taiwan and China leading to a demerger of JV partner resulted to changing the company name back to SMARTLINK from D-Link India.

Having large Manufacturing base, he sharpens his focus on Indian brand DIGILINK SCS products with local manufacturing in Copper and Fiber, In year 2009 he introduced DIGISOL first Indian brand in Active Networking Products.

Today under SMARTLINK HOLDINGS, which is a BSE/NSE listed Company, with three decades of glorious expertise in IT Networking Products, and involved in sourcing, manufacturing, sales, marketing, and support. SMARTLINK has reached history of making many product brands reach the desired heights in the Indian and International Market. Now the Company has two independent subsidiaries, namely, DIGISOL SYSTEMS LIMITED and SYNEGRA EMS LIMITED along with newly incorporated R&D facilities to enhance the businesses in a focused manner using its expertise of over three decades.

SmartLink Holdings Ltd. is an NBFC with assets and cash investments which includes investment in the two subsidiary companies.

SYNEGRA EMS Manufacturers all Active & Passive IT Networking Products as EMS & ODM to Manufacturer to supply to brand companies worldwide.

DIGISOL SYSTEMS, the brand products company with sales, marketing and all India support (Service)

Mr. Naik is the chairman and founder of his own brand company, DIGISOL Systems. He is a former president of the Manufacturers Association for Information Technology (MAIT)



MAKING INDIA SELF-RELIANT IN IT INFRASTRUCTURE

THE SMARTLINK INDEPENDENT UNITS.

SYNEGRA EMS LTD.

SYNEGRA EMS LTD. is a wholly owned subsidiary of Smartlink Holdings Limited. with its large, Certified Manufacturing in Goa and R&D facilities, which includes 2 SMT lines and Capacity of 6 SMT lines, Soldering Lines, Assembly & Testing Lines. It Manufactures a wide Range of Products – from PCB assemblies like motherboard, add-on-cards, the latest FTTH, Switch, Wi-Fi products in active networking range, Telecom products, Electric Chargers and Defense Applications Products. It Sources parts from Local Suppliers as well as from well-known Companies Worldwide.

SYNEGRA is an Electronics Manufacturing Services (EMS) and Original Design Manufacturer (ODM) Company with a highly skilled team for electronic manufacturing.

SYNEGRA is also into Manufacturing a wide Range of Structured Cabling Products to supply brand Companies. These Copper Connection Components are Produced for high bandwidth applications. And the Fiber Range of Products includes Equipment for Testing Assembly. Copper and Fiber Products are Manufactured and Supplied to Brand companies like DIGISOL.

SYNEGRA
www.synegra.com



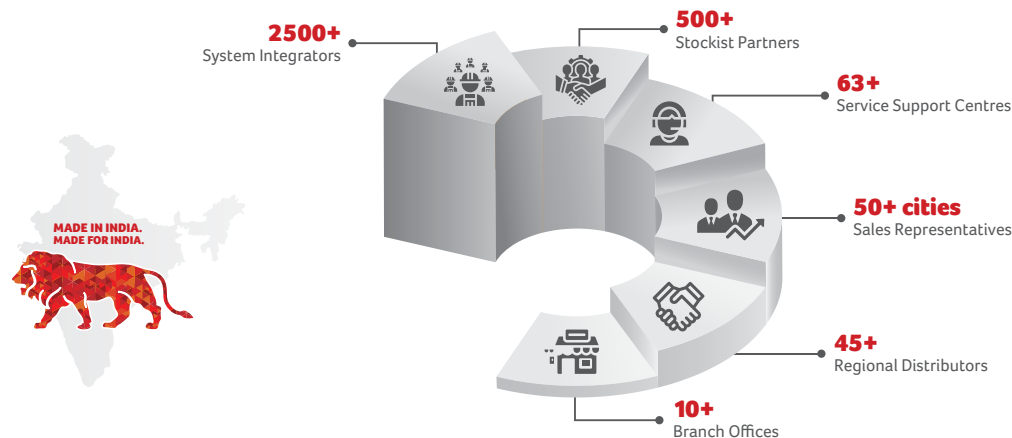
DIGISOL SYSTEMS LTD.

DIGISOL SYSTEMS established in 2009 after Smartlink's JV with D-Link ended. SMARTLINK with having large manufacturing setup and all india distribution line with 3 decades of experience in Manufacturing, Marketing, Sales, Service and Support. Which made perfect sense to introduced new local Indian brand DIGISOL. Now today DIGISOL is a First Indian brand in IT networking for FTTH, Wireless (Wi-Fi) and Switching Products under Active range of networking and Passive range of networking products include Copper & Fiber, Cabling solutions (CAT 5e, CAT 6 & CAT 6A), UTP/STP LAN Cables, Patch Pannels, Patch Cords and Face Plates. The Fiber range includes all kinds of Fiber Patch Cords, Pigtaills with performance certificates, and LIUs. DIGISOL has been steadily working towards introducing new products like Next Gen Wi-Fi-6 wireless products/ solutions, SMB and SME 10G fiber networking switches, media converters and enterprise wireless products and a full range of FTTH Products based on the changing needs of the market. DIGISOL has introduced a new generation of Made in India products like XPON ONUs, EPON/ GPON OLTs, Networking Switches and Enterprise Wireless products. DIGISOL has recently introduced the Multigig range of L3 Switches which provides a cost-effective solution with flexible deployment in any network architecture.

DIGISOL
www.digisol.com



**Spearheading
Government's
Make in India vision,
DIGISOL is the 1st Indian
Brand in IT networking
that has strong PAN
India presence with**



DIGISOL'S SOLUTIONS

DIGISOL is one of the leading IT Networking brands of India. DIGISOL innovates and offers top-notch end-to-end IT networking products, solutions and design assistance that cater to Enterprise, Mid-Market and Mirco-Enterprise Segments.



FTTH

XPON ONUs | GPON OLTs | GEAPON OLTs | PON Transsceivers



WIRELESS

Indoor Aaccess Points | Outdoor Aaccess Points | Controllers | USB Adapters



SWITCHING

Fully Managed | Smart Managed | Unmanaged | Chassis



STRUCTURED CABLING

Enterprise Cabling Systems | Channel Cabling Systems

VALUE ADDITION



DIGISOL PREMIUM PARTNER PROGRAM

The DIGISOL Premium Partner Program is designed to strengthen partnerships by offering dedicated Schemes, Incentives and various other benefits.



DIGISOL INSTITUTE OF TECHNICAL TRAINING

The institution aims to create value for all our Network Engineers, Channel Partners, IT Technicians and ISPs by consistently delivering quality training programs which are always in sync with the market demands.



DIGISOL CASH KARO LOYALTY PROGRAM

Cash Karo loyalty program as a way to enhance the relationship with existing electricians, technicians and partners while giving more reasons for new ones to connect. At the same time empower them, giving them a chance to earn more profit on their purchase of DIGISOL products.



NEXT-GEN READY IT NETWORKING SOLUTIONS

Required for cutting edge IT infrastructure technologies at various industry verticals.



Smart Cities



Manufacturing



Healthcare



Telecom



Real Estate



Hospitality



Banking



Surveillance



Data Centers



IT/ITES



Retail



Education

INDEX

COPPER	08
SOLID CABLES	10
KEYSTONES	12
PATCH PANELS	13
UNLOADED PATCH PANELS	14
PATCH CORDS	15
INDUSTRIAL FIELD PLUGS	16
UNLOADED FACE PLATES	18
SURFACE MOUNT BOX	20
TOOLS	20
RJ-45 CONNECTOR	21
 FIBER	 22
CABLES	24
PATCH CORDS	26
PIGTAILS	26
LIU's	27
ADAPTERS	29
 FTTH	 30
SPLITTERS	32
FIBER DISTRIBUTION BOX	33
CONNECTORS	33
OUTLET	34
DROP CABLE	34

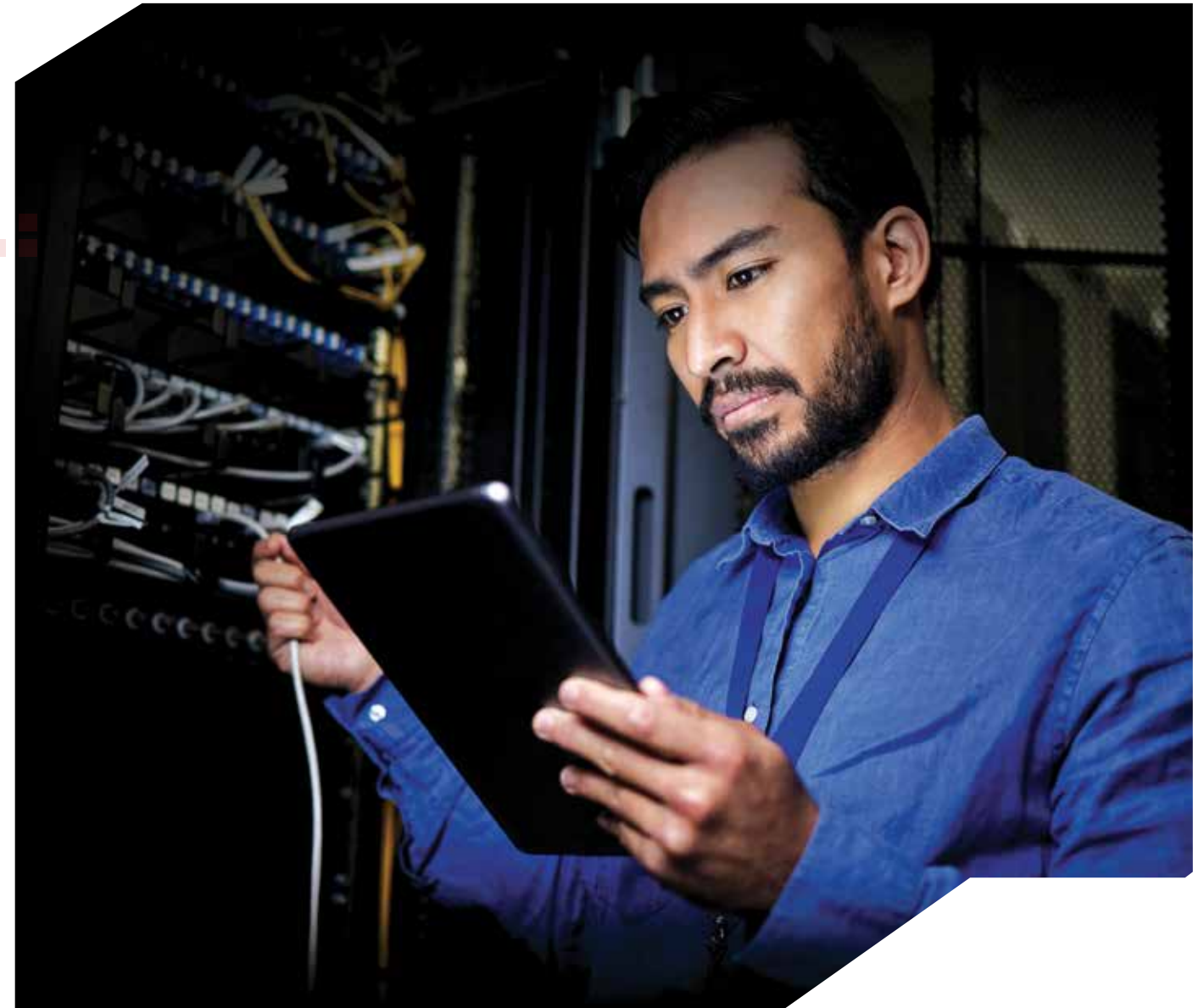
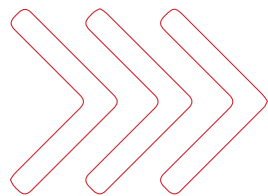
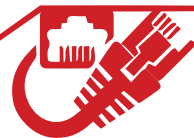


COPPER SOLUTIONS

COPPER CABLES: THE BACKBONE OF YOUR NETWORK

DIGISOL offers premium, cost-effective Copper Cabling Solutions, Seamlessly interconnecting servers and IT equipment to form robust communications networks. Ideal for small businesses, large enterprises and data centers, DIGISOL's products ensure a high-performance, reliable and future-proof cabling infrastructure.

COPPER Solutions includes CAT 5E, CAT 6 and CAT 6A Solid Cables, Keystones, Patch Panels, Patch Cords, Industrial Field Plugs, Face Plates, Surface Mount Box, Tools and RJ45 Plugs.

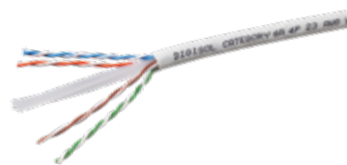


COPPER SOLID CABLES

DGC-SC6U4F-3GB

CAT6 UTP, 4 PAIR, 23 AWG, GREY, 305M SOLID CABLE

- 4 Pair 23 AWG
- UTP FR-PVC Cable
- Horizontal Cabling Networks
- Transmission Of High-Speed Data
- Digital and Analog
- Voice and Video Signals on LANs
- Made In India



DGC-SC6O4F-3GW

CAT6 UTP, OUTDOOR DOUBLE JACKET, 4 PAIR, 23 AWG, BLACK, 305M SOLID CABLE

- 4 Pair 23 AWG
- UTP FR-PVC Cable
- Inner Sheath PVC & Outer Sheath Black PE
- Rugged Double sheath construction
- Horizontal Cabling Networks
- Transmission Of High-Speed Data
- Digital and Analog Voice and Video Signals on LANs
- Made In India



COPPER SOLID CABLES

DGC-SCAF4F-3GW

CAT6A FTP, 4 PAIR, 23 AWG, GREY, 305M SOLID CABLE

- 4 Pair 23 AWG
- FTP FR-PVC Cable
- Horizontal Cabling Networks
- Transmission of High-Speed Data
- Digital and Analog
- Voice and Video Signals on LANs
- Made In India



DGC-SCAU4F-3GW

CAT6A UTP, 4 PAIR, 23 AWG, GREY, 305M SOLID CABLE

- Designed for Horizontal
- Cabling Networks for Transmission of High-Speed Data, Digital and Analog, Voice and Video Signals on Lans
- Supports Gigabit Ethernet (10 GBase-T) Standard
- Suitable for Noisy Environments, High EMI Interference Surroundings
- Complies to the Requirement of ANSI/TIA-568-C.2 and ISO/IEC 11801
- Bandwidth Performance Upto 600MHz



DGC-SC6A4F-3GW

CAT6 UTP, OUTDOOR ARMoured CABLE, 4 PAIR, 23 AWG, BLACK, 305M

- 4 Pair 23 AWG
- UTP FR-PVC Cable
- Inner Sheath PVC, ECCS Tape Armour with Outer Sheath Black PE
- Rugged Double sheath construction
- Horizontal Cabling Networks
- Transmission Of High-Speed Data
- Digital and Analog Voice and Video Signals on LANs
- Made In India



DGC-SC6F4F-3GW

CAT6 SFTP, 4 PAIR, 23 AWG, GREY, 305M SOLID CABLE

- 4 Pair 23 AWG
- SFTP FR-PVC Cable
- Horizontal Cabling Networks
- Transmission Of High-Speed Data
- Digital and Analog
- Voice and Video Signals on LANs
- Made In India



DGC-SC5U4F-3GB

CAT5E UTP, 4 PAIR, 24 AWG, GREY, 305M SOLID CABLE

- 4 Pair 23 AWG
- UTP FR-PVC Cable
- Horizontal Cabling Networks
- Transmission of High-Speed Data
- Digital and Analog
- Voice and Video Signals on LANs
- Made In India



COPPER KEYSTONES

DGC-KS6UWH-A

CAT6 UTP SOLDERLESS TOOLLESS KEYSTONE

- Fully (360 degree) covered in 30 microns Gold plated Contact pins which are assembled with Solderless process
- Cable Holder with Strain Relief function Fast, Easy, Reliable Termination
- Patented Toolless type design with contact pins assembled with Solder-less Press-fit process
- No oxidization of Contact pins due to absence of soldering flux leading to longer life
- High impact Polycarbonate Grade plastic, UL -94V-O rated
- Removable shutter option
- Supports both RJ11/RJ12 plug
- Plug Insertion Life : 750 Cycles minimum
- Available in CAT 6 and CAT 6A



DGC-KS6UWH-CD

CAT6 UTP, 180°, COLLAPSIBLE DOOR, PUNCH DOWN TYPE KEYSTONE

- Small & Exquisite form factor
- Skilled Design on Jack and PCB
- High and Reliable Performance
- Ergonomic Design & Easy Termination
- Support Both RJ11 and RJ12 Plug
- With Collapsible Shutter



DGC-KS6UWH-C (Link Series)

CAT6 UTP, 180°, WITHOUT DOOR, PUNCH DOWN TYPE KEYSTONE

- High and Reliable Performance
- Skilled Design on Jack and PCB
- Small & Exquisite form factor
- Keystone jack can be easily terminated by standard punch down tool
- Ergonomic Design and Easy Termination



DGC-KS6SMS-A

CAT6 STP, 180°, TOOLLESS TYPE KEYSTONE

- Zinc-casted Shell Covered with the Nickel Plating
- Provide Outstanding Performance to Outside EMI
- Secures Data
- Skilled Design on Jack and PCB
- High and Reliable Performance
- Ergonomic Design and Easy Termination
- Available in Cat6A



COPPER PATCH PANELS

DGC-PP6U2L-1B-SL

CAT6 UTP 24 PORT 90° SOLDERLESS PATCH PANEL

- Contacts pins assembled in Patented PCBs by Solder-less process leading to higher efficiency
- Flexible Square Contact pins, with 360 degree covered in 30 microns Gold plating, better for POE Application
- IDC accommodates 22~26 AWG Stranded and Solid wires
- No oxidization of contact pins due to absence of soldering flux leading to longer life
- Higher performance with better transmission at electron level
- 6 Port Jack configuration specially designed & molded in Polycarbonate Fire retardant material and Removable Module Design
- 90 Degree Punch-Down design for easy assembly on site
- Exceeds ANSI/TIA 568-C.2 standard, and supports 1000-BASE-T
- 1U Patch Panel to mount in any Standard Rack



DGC-PP6U2L-1A

CAT6 UTP, 24 PORT, 180° PATCH PANEL

- 180 Degree Punch Down Design
- 1U Patch Panel to Mount in any Standard Rack
- Easy Port Labeling Identification Provision
- Accommodates 22~26 AWG Stranded and Solid Wires



DGC-PPAU2L-1A

CAT6A UTP, 24 PORT, 180° PATCH PANEL

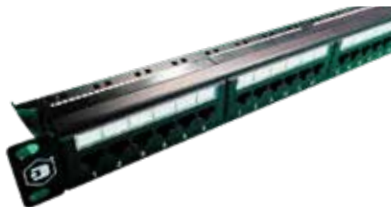
- 180 Degree Punch Down Design
- 1U Patch Panel to Mount in any Standard Rack
- Easy Port Labeling Identification Provision
- Accommodates 22~26 AWG Stranded and Solid Wires



DGC-PP6U2L-1C (Link Series)

CAT6 UTP, 24 PORT, 180° PATCH PANEL

- 180 Degree punch down design for network terminations
- Ease of cable routing is assured with a rear cable management
- 6x4 module type designed jack configuration
- Easily removable module design
- 1U standard 19 inch rack mounted
- Easy port labeling identification
- Compatible with T568A or T568B wiring schemes
- Accommodates 22~26 AWG Stranded and Solid Copper Wires



COPPER UNLOADED PATCH PANELS

DGC-PPXU2U-1X

UNLOADED UTP, 24 PORT, PATCH PANEL

- Front Removable Module Design
- 1U Patch Panel to Mount in any Standard Rack
- Easy Port Labeling Identification Provision
- Accommodates 22~26 AWG Stranded and Solid Wires



DGC-PPXU2U-1XA

UNLOADED UTP, 24 PORT, ANGLED BLANK PATCH PANEL

- Robust and Elegant designed panel
- Compatible with standard size UTP keystones jacks
- Ease of cable routing is assured with a rear cable management
- Keystones can be assembled and disassembled easily on the panel
- 1U standard 19 inch rack mounted
- Angular shape for easy routing of Patchcords when assembled in racks
- Easy port labeling identification



DGC-PPXSU2US-1X PP

UTP/STP, 24 PORT, CAT6, STRAIGHT SHUTTERED UNLOADED PATCH PANEL

- Robust and Elegant designed panel
- Compatible with standard size UTP/STP keystones jacks
- Ease of cable routing is assured with a rear cable management
- Keystones can be assembled and disassembled easily on the panel
- Each port is provided with spring loaded shutter to prevent dust entry
- 1U standard 19 inch rack mounted
- Ideal Pach Panel for high end Data Center infrastructure
- Grounding wire as a standard option for STP solution
- Easy port labeling identification



COPPER PATCH CORDS

DGC-PC6UMBL-1L

CAT6 UTP, LSZH PATCH CORD

- Available in LSZH Sheath Jacket-Reduced Toxic Gasses Emitted During Combustion
- RJ45, 8P8C, 2 FORK 30μ" Gold Plated Contacts
- 100% Factory Tested
- Transparent Boot Cable Assemblies
- Available Colors: (as per MOQ) Grey, Blue, Green, Yellow, Orange, Red



DGC-PC6SMGY-1L

CAT6 STP, LSZH PATCH CORD

- Available in LSZH Sheath Jacket- Reduced Toxic Gasses Emitted During Combustion
- RJ45, 8P8C
- 100% Factory Tested
- Shielded Plug Boot Cable Assemblies
- Provides Better Mechanical Properties



DGC-PC6UMBL-1F

CAT6 UTP, FRPVC PATCH CORD

- Available in FRPVC Jacket
- RJ45, 8P8C, 2 FORK 30μ" Gold Plated Contacts
- 100% Factory Tested
- Transparent Boot Cable Assemblies
- Available Colors: (as per MOQ) Grey, Blue, Yellow



DGC-PCAUMGY-1L

CAT6A UTP, LSZH PATCH CORD

- Available in LSZH Sheath Jacket-Reduced Toxic Gasses Emitted During Combustion
- RJ45, 8P8C, 2 FORK 30μ" Gold Plated Contacts
- 100% Factory Tested
- Transparent Boot Cable Assemblies



COPPER PATCH CORDS

DGC-PC6UMGY-1L-LK

CAT6 UTP, LOCKABLE LSZH PATCH CORDS

- Secured patch cord with locking key for data centre applications
- 24 AWG
- LSZH jacket
- 50 micron gold plated RJ45 contact pins



DGC-PC6UMGY-1L-UHD

ULTRA HD PATCH CORDS

- UHD Patchcords with Pull-Back Tool
- Arrests data disconnections in high density patch panels due to mishandling.
- Patchcord Jacket is of LSZH material
- Fully (360 deg) plating on Contacts with 50 micron gold for best conductivity performance
- Suitable for Data Centre applications



COPPER INDUSTRIAL FIELD PLUGS

DGC-RJPUC6-A

CAT6 UTP, 180°, 3 PIECE, PoE+ INDUSTRIAL FIELD RJ45 PLUGS



DGC-RJPSCA-A

CAT6A STP, 180°, 5 PIECE, PoE+ INDUSTRIAL FIELD RJ45 PLUGS



DGC-RJPSCA-Z

CAT6A STP, 360°, 7 PIECE, PoE+ INDUSTRIAL FIELD RJ45 PLUGS

- Direct connectivity from switch to the end user's device
- PoE+ compliant
- Toolless termination
- Solderless Process used for assembly of pins on PCBs leading to longer life and no oxidation due to absence of flux



COPPER UNLOADED FACE PLATES

DGC-FPXSMSS-A

TWO PIECE SINGLE PORT, FACE PLATE
MODULAR STRAIGHT SHUTTERED

- Two Piece design
- Shutter on Face Plate
- Elegant hidden-screw design
- Made In India



DGC-FPXQMSS-A

TWO PIECE QUAD PORT, FACE PLATE
MODULAR STRAIGHT SHUTTERED

- Two Piece design
- Shutter on Face Plate
- Elegant hidden-screw design
- Made In India



DGC-FPXDMSS-B

ONE PIECE DUAL PORT, FACE PLATE

- One Piece design
- Screw caps to hide screws
- Made In India



DGC-FPXMSS-A

TWO PIECE DUAL PORT, FACE PLATE
MODULAR STRAIGHT SHUTTERED

- Two Piece design
- Shutter on Face Plate
- Elegant hidden-screw design
- Made In India



DGC-FPXMSX-B

ONE PIECE SINGLE PORT, FACE PLATE

- One Piece design
- Screw caps to hide screws
- Made In India



DGC-FPXQMSX-B

ONE PIECE QUAD PORT, FACE PLATE

- One Piece design
- Screw caps to hide screws
- Made In India



COPPER UNLOADED FACE PLATES

DGC-FPXSMSS-C (Link Series)

ONE PIECE SINGLE PORT, FACE PLATE

- One piece design
- Shutter on Face Plate
- Robust and Installer friendly design
- Wall flush installation
- Ease in port identification labelling
- Ease in snap in and out of RJ45 keystone connector



DGC-FPXMSS-C (Link Series)

ONE PIECE DUAL PORT, FACE PLATE

- One piece design
- Shutter on Face Plate
- Robust and Installer friendly design
- Wall flush installation
- Ease in port identification labelling
- Ease in snap in and out of RJ45 keystone connector



COPPER SURFACE MOUNT BOX

DGC-SBXXXXX-A

UNLOADED SURFACE MOUNT BOX

- Robust and installer friendly design
- Secure and protect your wire with our durable wall box
- Easy to install



DGC-SBXXXXX-B

UNLOADED SURFACE MOUNT BOX CONCEALED TYPE

- Robust and installer friendly design
- Secure and protect your wire with our durable wall box
- Easy to install
- Concealed Type



COPPER TOOLS

DGC-3013ASTH

TOOL CABLE STRIPPER WITH CUTTER FOR LAN (UTP/STP)

- Light weight, compact stripper, simple to operate
- Strips UTP /STP wire and multi conductor cable dimension
- Uses adjustable knob for setting different insulation diameters
- Provides with cable cutting function



DGC-3013AMT02K

TOOL IMPACT TOOL WITH BLADES FOR 110 & KRONE IDC

- Impact Tool with interchangeable blades
- 110, 66 Block and Krone/ADC formats and blades
- User adjustable impact force with dial in the handle
- Extra Blade Storage in handle
- Heavy Duty



COPPER TOOLS

DGC-CRMTS

CRIMP TOOL WITH TESTER

- Saves time and makes installing LAN cables easy
- Multipurpose tool efficiently cuts and strips LAN cables up to 12 mm in diameter
- Wire crimper is compatible with all RJ45, RJ11, RJ12 modular plug types
- Ergonomically designed with non-slip handles for secure hand grip
- Built-in cable tester identifies wiring faults
- Immediately Test or Debug Newly Crimped or Existing In-Wall Network or Telecom Cables



COPPER RJ-45 CONNECTOR

DGC-RJ1UC5-C

RJ-45 CONNECTOR CAT 5E, UTP PLUGS, 3 PRONG

- RJ-45 modular plugs for Local Area Network (LAN) and computer applications
- Suitable for Solid or Stranded UTP cables
- 3-Prong Design for accurate termination
- Transparent



FIBER SOLUTIONS

TRANSFORM YOUR CONNECTIVITY WITH HIGH-PERFORMANCE FIBER PRODUCTS

DIGISOL offers cutting-edge Fiber Solutions for seamless, high-speed internet. With reliable optical Fiber Cables, FTTH Solutions and Network Switches, DIGISOL ensures top performance and security. Invest in DIGISOL for a future-proof, high-bandwidth network.

FIBER Solutions includes Cables, Patch Cords, Pigtails, LIUs and Adapters.

DIGISOL[®]



DGF-CAS2OUSH-06

SINGLE MODE UNITUBE ARMoured CABLE

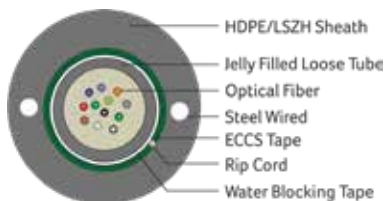
- Suitable for Outdoor Network Direct Burial
- Polyester based yarns below Armour tape for easy ripping
- Thermoplastic Material Tube
- Excellent Waterproof Layer and Moisture Resistance
- Excellent Crush Resistance Performance



DGF-CAM3OUSH-06

MULTI-MODE UNITUBE ARMoured CABLE

- Suitable for Outdoor Network Direct Burial
- Polyester based yarns below Armour tape for easy ripping
- Thermoplastic Material Tube
- Excellent Waterproof Layer and Moisture Resistance
- Excellent Crush Resistance Performance



DGF-CUS2OUSH-06

SINGLE MODE UNITUBE UN-ARMoured CABLE

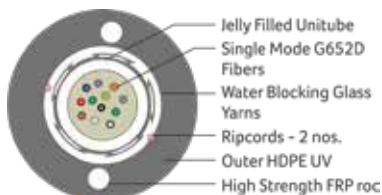
- Suitable for Outdoor Network Direct Burial
- Un-Armoured design with High Strength FRP's & Glass Rovings
- Thermoplastic Material Tube
- Excellent Waterproof Layer and Moisture Resistance
- Excellent Crush Resistance Performance



DGF-CUM3OUSH-06

MULTI-MODE UNITUBE UN-ARMoured CABLE

- Suitable for Outdoor Network Direct Burial
- Un-Armoured design with High Strength FRP's & Glass Rovings
- Thermoplastic Material Tube
- Excellent Waterproof Layer and Moisture Resistance
- Excellent Crush Resistance Performance



DGF-CUS2TUSL-06

SINGLE MODE AND MULTI-MODE TIGHT-BUFFERED CABLE

- Suitable for aerial, Pipeline, Bracket Laying
- Suitable for Indoor and Outdoor Applications
- All Dielectric self-supporting ADSS
- Polyester based yarns tape for easy ripping
- Excellent Crush Resistance Performance



DGF-CAS2OMSH-06

SINGLE SHEATH MULTI-TUBE ARMoured CABLE

- Suitable for Outdoor Network Direct Burial
- Polyester based yarns below Armour tape for easy ripping
- Thermoplastic Material Tube
- Core covering Polyester Binder and Polyester tape
- Excellent Waterproof Layer and Moisture Resistance
- Excellent Crush Resistance Performance



DGF-CAS2OMDH-06

DOUBLE SHEATH MULTI-TUBE ARMoured CABLE

- Suitable for Outdoor Network Direct Burial
- Polyester based yarns below Armour tape for easy ripping
- Thermoplastic Material Tube
- Core covering Polyester Binder and Polyester tape
- Excellent Waterproof Layer and Moisture Resistance
- Excellent Crush Resistance Performance



FIBER PATCH CORDS

DGF-PS2DSCSCP3L

SINGLE MODE, LSZH PATCH CORD

- LSZH Jacket-Reduced Toxic Gasses Emitted During Combustion
- 100% Factory Tested
- Available with Corning Fiber
- Available in PC/APC Type Options
- High Precision Ceramic Ferrule with Good Concentricity
- Available in Simplex and Duplex Modes



DGF-PM3DSCSCP3L

MULTI-MODE, LSZH PATCH CORD

- LSZH Jacket-Reduced Toxic Gasses Emitted During Combustion
- 100% Factory Tested
- Available with Corning Fiber
- Available in PC/APC Type Options
- High Precision Ceramic Ferrule with Good Concentricity
- Available in Simplex and Duplex Modes



FIBER PIGTAILS

DGF-TM2SLCP-2L

SINGLE MODE & MULTI-MODE, LSZH PIGTAILS

- LSZH Jacket-Reduced Toxic Gasses Emitted During Combustion
- 100% Factory Tested
- Available with Corning Fiber
- Available in PC/APC Type Options
- High Precision Ceramic Ferrule with Good Concentricity
- Available in Simplex and Duplex Modes



FIBER LIU's

DGF-LXXXUXX-2D

DRAWER TYPE LIU

- Available in Standard 19"
- Cold Rolled Steel as Raw Material
- Consist of Top Cover and Bottom Panel
- Easy to Assemble and Disassemble
- Three Types of Input Holes
- Cable Entry Through Waterproof Cable Clamp
- 24 Simplex SC or 12 Duplex LC Adapter Interface
- Splice 24 Fibers at Most with 1 Tray



DGF-LXXXUXX-2S

SLIDING TYPE LIU

- Available in Standard 19"
- Cold Rolled Steel as Raw Material
- Versatile Panel with Expandable Double Slide Rails for Smooth Sliding
- 1U Installs 2 Pcs Standard Adapter Plates at Different Types
- Front Saddles Pivot for Improved Patch Cord Routing & Organization
- Comprehensive Accessory Kit for Cable Entry and Fiber Management
- Patch Cord Bend Radius Guides Minimize Macro Bending
- Different Adapter Interface Including ST, SC, FC, LC ETC



DGF-LXXXUXX-1CD

WALL MOUNT 6 PORT COMPACT LIU TYPE DIN-RAIL DESIGN, UNLOADED

- Sleek and compact design
- Lightweight aluminium body
- Wall mount and DIN-Rail design
- Available in lock and key as a standard design feature
- Ideal solutions for telecom market customers such as ISPs, MSOs and System Integrators
- Cable glands for fiber cable entry
- In-built splice holder tray



DGF-LXXXUXX-2CD

WALL MOUNT 12 PORT COMPACT LIU TYPE DIN-RAIL DESIGN, UNLOADED

- Customized requirements for 12 ports addressed
- Sleek and compact design
- Lightweight aluminium body
- Wall mount design and DIN-rail design
- Perfect for Surveillance solution needs
- Cable glands for fiber cable entry
- In-built splice holder tray



DGF-LXXXUXX-2W

WALL MOUNT FIBERLIU TYPE

- Cold Rolled Steel as Raw Material
- Consist of Top Cover & Bottom Panel
- Easy to Assemble and Dissemble
- Three Types of Input Holes
- Cable Entry Through Waterproof Cable Clamp
- 12 Duplex SC or LC Adapter Interface
- Patch Cord with Bend Radius Guides Minimize Macro Bending



DGF-ASMSFC-P

FC TYPE ADAPTERS

- Compact Design
- Telcordia GR-326-Core
- RoHS Compliance
- Low Insertion and Return Loss
- Self Adjusting Metal Panel Clips
- Available in Flange Mount or D Hole Mount Adapter Styles
- Available in Simplex and Duplex Types



DGF-ASMDLC-P

LC TYPE ADAPTERS

- Small Footprint
- Telcordia GR-326-Core
- RoHS Compliance
- Low Insertion and Return Loss
- Self Adjusting Plastic Clips
- Available in Simplex and Duplex Types



DGF-ASMSSC-P

SC TYPE ADAPTERS

- Compact Design
- Telcordia GR-326-Core
- RoHS Compliance
- Low Insertion and Return Loss
- Available In Simplex and Duplex Types



DGF-ASMSST-P

ST TYPE ADAPTERS

- Compact Design
- Telcordia GR-326-Core
- RoHS Compliance
- Low Insertion and Return Loss
- Choice of Flange Options
- Self Adjusting Metal Panel Clips



FTTH SOLUTIONS

EMPOWER YOUR HOME WITH FIBER-OPTIC TECHNOLOGY

DIGISOL's End-to-End FTTH Solution provides High speed Internet, Triple play service, Wi-Fi, Voice, Video and CATV services for home-connected users. Our technology and expertise ensures that consumers gets internet at the speed of light.

FTTH Solutions includes Splitters, Fiber Distribution Box, Connectors, Home Termination Box and Drop Cable.



FTTH SPLITTERS

DGF-SRSSCA1-2

FTTH RACK TYPE SPLITTERS

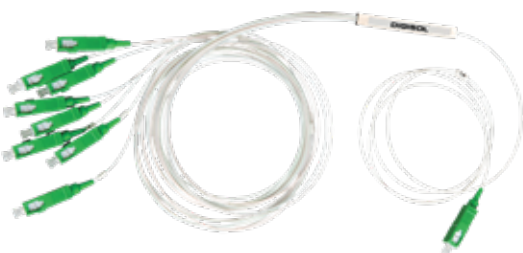
- Low insertion loss
- Low Polarization Dependent Loss
- High Reliability
- Wide wavelength range
- High Return Loss and good Repeatability
- Excellent channel to channel uniformity
- Excellent Environmental Stability
- Excellent Mechanical Stability
- Telcordia GR-1221 and GR-1209



DGF-STSSCA1-2

FTTH TUBE TYPE SPLITTERS

- Low insertion loss
- High Reliability
- Low Polarization Dependent Loss
- High Return Loss and good Repeatability
- Wide wavelength range
- Excellent channel to channel uniformity
- Excellent Environmental Stability
- Excellent Mechanical Stability
- Telcordia GR-1221 and GR-1209



DGF-SBSSCA1-2

FTTH BOX TYPE SPLITTERS

- Low Polarization Dependent Loss
- Low insertion loss
- High Reliability
- Wide wavelength range
- High Return Loss and good Repeatability
- Excellent channel to channel uniformity
- Excellent Environmental Stability
- Excellent Mechanical Stability
- Telcordia GR-1221 and GR-1209



FTTH FIBER DISTRIBUTION BOX

DGF-DBXXXX-6

FTTH FIBER DISTRIBUTION BOX, 6 CORE

- Full Enclosed & Ergonomic Design
- Meets IP65 Grade for wet-proof, water-proof and anti-aging
- Hinged Splice tray for easy installation and maintenance
- Feeder cable and Drop cable fixation, Fiber Splicing, Storage and Distribution
- Separate cable pathway design
- Modular adapter holder design
- Wall Mounted or Pole mounted
- Suitable for Indoor and Outdoor Use
- Available in 8 core and 12 core



FTTH CONNECTORS

DGF-CFSSSC-A / DGF-CFSSSC-P

FIBER OPTIC FIELD ASSEMBLY CONNECTORS

- DGF-CFSSSC-A SM, SC, APC Type
- DGF-CFSSSC-P SM, SC, PC Type
- Industry leading double V groove alignment clamping mechanism
- User friendly and cost effective
- Superior qualified standard PC, APC, UPC polishing
- Reliable and superior optical performance
- Good exchange ability and good reliability
- No electricity required
- Cable tensile test complies with GR-326-CORE
- No epoxy and polishing required
- Only three pre-assembly parts
- Available in 8 core and 12 core



FTTH OUTLET

DGF-FOSSXX2-WH

FTTH BOX TYPE OUTLET

- Indoor FTTH and Fiber Optic CATV Application
- Inner tray for splice sleeve
- Compact design
- Available with SC Simplex or LC Duplex
- All Modules are solderless mode



FTTH DROP CABLE

DGF-CFS3IL-02

FTTH DROP CABLE

- Simple Structure
- Light Weight
- Novel Groove Design
- Easily Strip and Splice
- High Tensile Strength and Metal Free
- Simplified Installation and Maintenance
- LSZH and Flame-Retardant Sheath
- Environment Friendly and Good Safety

