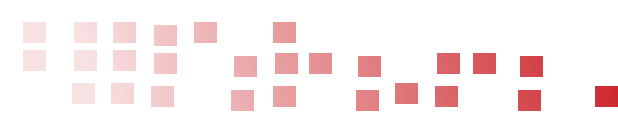


SOLUTIONS POWERING SUCCESS



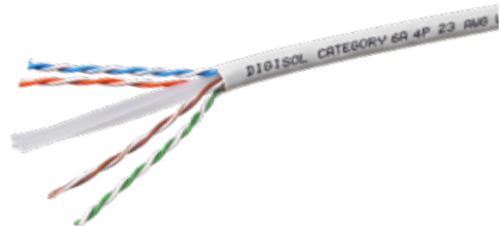
STRUCTURED CABLING SOLUTIONS

COPPER | FIBER | FTTH

INDEX

SOLID CABLES	3
KEYSTONES	4
PATCH PANELS	4
UNLOADED PATCH PANELS	5
PATCH CORDS & INDUSTRIAL FIELD PLUGS	6
UNLOADED FACE PLATES	7
SURFACE MOUNT BOX, TOOLS	8
RJ-45 CONNECTOR	8
FIBER CABLES	9
PATCH CORDS, PIGTAILS & LIU's	10
ADAPTERS	11
FTTH SPLITTERS, FDB & CONNECTORS	12
OUTLET & DROP CABLE	13

SOLID CABLES



DGC-SC6U4F-3GB

CAT6 UTP, 4 PAIR, 23 AWG, GREY, 305M SOLID CABLE

- 4 Pair 23 AWG
- UTP FR-PVC Cable
- Horizontal Cabling Networks
- Transmission Of High-Speed Data
- Digital and Analog
- Voice and Video Signals on LANs
- Made In India



DGC-SC6O4F-3GW

CAT6 UTP, OUTDOOR DOUBLE JACKET, 4 PAIR, 23 AWG, BLACK, 305M SOLID CABLE

- 4 Pair 23 AWG
- UTP FR-PVC Cable
- Inner Sheath PVC & Outer Sheath Black PE
- Rugged Double sheath construction
- Horizontal Cabling Networks
- Transmission Of High-Speed Data
- Digital and Analog Voice and Video Signals on LANs
- Made In India



DGC-SC6A4F-3GW

CAT6 UTP, OUTDOOR ARMoured CABLE, 4 PAIR, 23 AWG, BLACK, 305M

- 4 Pair 23 AWG
- UTP FR-PVC Cable
- Inner Sheath PVC, ECCS Tape Armour with Outer Sheath Black PE
- Rugged Double sheath construction
- Horizontal Cabling Networks
- Transmission Of High-Speed Data
- Digital and Analog Voice and Video Signals on LANs
- Made In India



DGC-SC6SF4F-3GW

CAT6 SFTP, 4 PAIR, 23 AWG, GREY, 305M SOLID CABLE

- 4 Pair 23 AWG
- SFTP FR-PVC Cable
- Horizontal Cabling Networks
- Transmission Of High-Speed Data
- Digital and Analog
- Voice and Video Signals on LANs
- Made In India



DGC-SCAF4F-3GW

CAT6A FTP, 4 PAIR, 23 AWG, GREY, 305M SOLID CABLE

- 4 Pair 23 AWG
- FTP FR-PVC Cable
- Horizontal Cabling Networks
- Transmission of High-Speed Data
- Digital and Analog
- Voice and Video Signals on LANs
- Made In India



DGC-SCAU4F-3GW

CAT6A UTP, 4 PAIR, 23 AWG, GREY, 305M SOLID CABLE

- Designed for Horizontal
- Cabling Networks for Transmission of High-Speed Data, Digital and Analog, Voice and Video Signals on Lans
- Supports Gigabit Ethernet (10 GBase-T) Standard
- Suitable for Noisy Environments, High EMI Interference Surroundings
- Complies to the Requirement of ANSI/TIA-568-C.2 and ISO/IEC 11801
- Bandwidth Performance Upto 600MHz

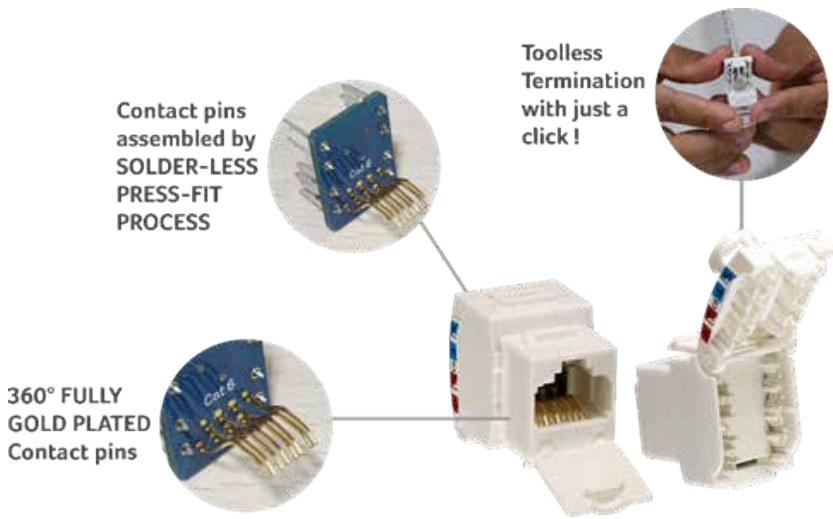


DGC-SC5U4F-3GB

CAT5E UTP, 4 PAIR, 24 AWG, GREY, 305M SOLID CABLE

- 4 Pair 23 AWG
- UTP FR-PVC Cable
- Horizontal Cabling Networks
- Transmission of High-Speed Data
- Digital and Analog
- Voice and Video Signals on LANs
- Made In India

KEYSTONES



DGC-KS6UWH-A

CAT6 UTP SOLDERLESS TOOLLESS KEYSTONE

- Fully (360 degree) covered in 30 microns Gold plated Contact pins which are assembled with Solderless process
- Cable Holder with Strain Relief function Fast, Easy, Reliable Termination
- Patented Toolless type design with contact pins assembled with Solder-less Press-fit process
- No oxidization of Contact pins due to absence of soldering flux leading to longer life
- High impact Polycarbonate Grade plastic, UL-94V-O rated
- Removable shutter option
- Supports both RJ11/RJ12 plug
- Plug Insertion Life : 750 Cycles minimum
- Available in CAT 6 and CAT 6A



DGC-KS6UWH-CD

CAT6 UTP, 180°, COLLAPSIBLE DOOR, PUNCH DOWN TYPE KEYSTONE

- Small & Exquisite form factor
- Skilled Design on Jack and PCB
- High and Reliable Performance
- Ergonomic Design & Easy Termination
- Support Both RJ11 and RJ12 Plug
- With Collapsible Shutter



DGC-KS6UWH-C

CAT6 UTP, 180°, WITHOUT DOOR, PUNCH DOWN TYPE KEYSTONE

- High and Reliable Performance
- Skilled Design on Jack and PCB
- Small & Exquisite form factor
- Keystone jack can be easily terminated by standard punch down tool
- Ergonomic Design and Easy Termination

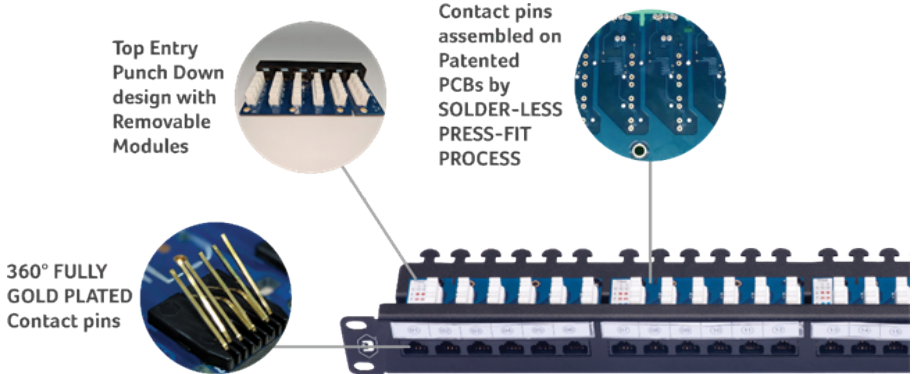


DGC-KS6SMS-A

CAT6 STP, 180°, TOOLLESS TYPE KEYSTONE

- Zinc-casted Shell Covered with the Nickel Plating
- Provide Outstanding Performance to Outside EMI
- Secures Data
- Skilled Design on Jack and PCB
- High and Reliable Performance
- Ergonomic Design and Easy Termination
- Available in Cat6A

PATCH PANELS



DGC-PP6U2L-1B-SL

CAT6 UTP 24 PORT 90° SOLDERLESS PATCH PANEL

- Contacts pins assembled in Patented PCBs by Solder-less process leading to higher efficiency
- Flexible Square Contact pins, with 360 degree covered in 30 microns Gold plating, better for POE Application
- IDC accommodates 22~26 AWG Stranded and Solid wires
- No oxidization of contact pins due to absence of soldering flux leading to longer life
- Higher performance with better transmission at electron level
- 6 Port Jack configuration specially designed & molded in Polycarbonate Fire retardant material and Removable Module Design
- 90 Degree Punch-Down design for easy assembly on site
- Exceeds ANSI/TIA 568-C.2 standard, and supports 1000-BASE-T
- 1U Patch Panel to mount in any Standard Rack



DGC-PP6U2L-1A

CAT6 UTP, 24 PORT, 180° PATCH PANEL

- 180 Degree Punch Down Design
- 1U Patch Panel to Mount in any Standard Rack
- Easy Port Labeling Identification Provision
- Accommodates 22~26 AWG Stranded and Solid Wires

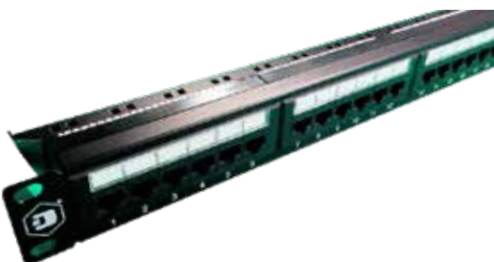
PATCH PANELS



DGC-PPAU2L-1A

CAT6A UTP, 24 PORT, 180° PATCH PANEL

- 180 Degree Punch Down Design
- 1U Patch Panel to Mount in any Standard Rack
- Easy Port Labeling Identification Provision
- Accommodates 22~26 AWG Stranded and Solid Wires



DGC-PP6U2L-1C

CAT6 UTP, 24 PORT, 180° PATCH PANEL

- 180 Degree punch down design for network terminations
- Ease of cable routing is assured with a rear cable management
- 6x4 module type designed jack configuration
- Easily removable module design
- 1U standard 19 inch rack mounted
- Easy port labeling identification
- Compatible with T568A or T568B wiring schemes
- Accommodates 22~26 AWG Stranded and Solid Copper Wires

UNLOADED PATCH PANELS



DGC-PPXU2U-1X

UNLOADED UTP, 24 PORT, PATCH PANEL

- Front Removable Module Design
- 1U Patch Panel to Mount in any Standard Rack
- Easy Port Labeling Identification Provision
- Accommodates 22~26 AWG Stranded and Solid Wires



DGC-PPXU2U-1XA

UNLOADED UTP, 24 PORT, ANGLED BLANK PATCH PANEL

- Compatible with standard size UTP keystones jacks
- Ease of cable routing is assured with a rear cable management
- Keystones can be assembled and disassembled easily on the panel
- 1U standard 19 inch rack mounted
- Robust and Elegant designed panel
- Angular shape for easy routing of Patchcords when assembled in racks
- Easy port labeling identification



DGC-PPXSU2US-1X

UTP/STP, 24 PORT, CAT6, STRAIGHT SHUTTERED UNLOADED PATCH PANEL

- Compatible with standard size UTP/STP keystones jacks
- Ease of cable routing is assured with a rear cable management
- Keystones can be assembled and disassembled easily on the panel
- Each port is provided with spring loaded shutter to prevent dust entry
- Robust and Elegant designed panel
- 1U standard 19 inch rack mounted
- Ideal Patch Panel for high end Data Center infrastructure
- Grounding wire as a standard option for STP solution
- Easy port labeling identification





PATCH CORDS

DGC-PC6UMBL-1L

CAT6 UTP, LSZH PATCH CORD



- Available in LSZH Sheath Jacket-Reduced Toxic Gasses Emitted During Combustion
- RJ45, 8P8C, 2 FORK 30μ” Gold Plated Contacts
- 100% Factory Tested
- Transparent Boot Cable Assemblies
- Available Colors: (as per MOQ) Grey, Blue, Green, Yellow, Orange, Red

DGC-PC6SMGY-1L

CAT6 STP, LSZH PATCH CORD



- Available in LSZH Sheath Jacket- Reduced Toxic Gasses Emitted During Combustion
- RJ45, 8P8C
- 100% Factory Tested
- Shielded Plug Boot Cable Assemblies
- Provides Better Mechanical Properties

DGC-PC6UMBL-1F

CAT6 UTP, FRPVC PATCH CORD



- Available in FRPVC Jacket
- RJ45, 8P8C, 2 FORK 30μ” Gold Plated Contacts
- 100% Factory Tested
- Transparent Boot Cable Assemblies
- Available Colors: (as per MOQ) Grey, Blue, Yellow

DGC-PCAUMGY-1L

CAT6A UTP, LSZH PATCH CORD



- Available in LSZH Sheath Jacket-Reduced Toxic Gasses Emitted During Combustion
- 100% Factory Tested
- RJ45, 8P8C, 2 FORK 30μ” Gold Plated Contacts
- Transparent Boot Cable Assemblies

DGC-PC6UMGY-1L-LK

CAT6 UTP, LOCKABLE LSZH PATCH CORDS



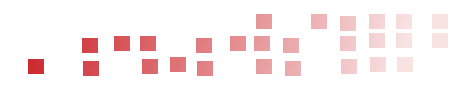
- Secured patch cord with locking key for data centre applications
- 24 AWG
- LSZH jacket
- 50 micron gold plated RJ45 contact pins

DGC-PC6UMGY-1L-UHD

ULTRA HD PATCH CORDS



- UHD Patchcords with Pull-Back Tool
- Arrests data disconnections in high density patch panels due to mishandling.
- Patchcord Jacket is of LSZH material
- Fully (360 deg) plating on Contacts with 50 micron gold for best conductivity performance
- Suitable for Data Centre applications



INDUSTRIAL FIELD PLUGS

DGC-RJPUC6-A

CAT6 UTP, 180°, 3 PIECE, PoE+ INDUSTRIAL FIELD RJ45 PLUGS



DGC-RJPSCA-A

CAT6A STP, 180°, 5 PIECE, PoE+ INDUSTRIAL FIELD RJ45 PLUGS



DGC-RJPSCA-Z

CAT6A STP, 360°, 7 PIECE, PoE+ INDUSTRIAL FIELD RJ45 PLUGS



- Direct connectivity from switch to the end user’s device
- PoE+ compliant
- Toolless termination
- Solderless Process used for assembly of pins on PCBs leading to longer life and no oxidation due to absence of flux

UNLOADED FACE PLATES



DGC-FPXSMSS-A

TWO PIECE SINGLE PORT, FACE PLATE MODULAR STRAIGHT SHUTTERED

- Two Piece design
- Shutter on Face Plate
- Elegant hidden-screw design
- Made In India



DGC-FPXDMSS-A

TWO PIECE DUAL PORT, FACE PLATE MODULAR STRAIGHT SHUTTERED

- Two Piece design
- Shutter on Face Plate
- Elegant hidden-screw design
- Made In India



DGC-FPXQMSS-A

TWO PIECE QUAD PORT, FACE PLATE MODULAR STRAIGHT SHUTTERED

- Two Piece design
- Shutter on Face Plate
- Elegant hidden-screw design
- Made In India



DGC-FPXSMSX-B

ONE PIECE SINGLE PORT, FACE PLATE

- One Piece design
- Screw caps to hide screws
- Made In India



DGC-FPXDMSX-B

ONE PIECE DUAL PORT, FACE PLATE

- One Piece design
- Screw caps to hide screws
- Made In India



DGC-FPXQMSX-B

ONE PIECE QUAD PORT, FACE PLATE

- One Piece design
- Screw caps to hide screws
- Made In India



DGC-FPXSMSS-C

ONE PIECE SINGLE PORT, FACE PLATE

- One piece design
- Shutter on Face Plate
- Robust and Installer friendly design
- Wall flush installation
- Ease in port identification labelling
- Ease in snap in and out of RJ45 keystone connector



DGC-FPXDMSS-C

ONE PIECE DUAL PORT, FACE PLATE

- One piece design
- Shutter on Face Plate
- Robust and Installer friendly design
- Wall flush installation
- Ease in port identification labelling
- Ease in snap in and out of RJ45 keystone connector

SURFACE MOUNT BOX



DGC-SBXXXXX-A

UNLOADED SURFACE MOUNT BOX

- Robust and installer friendly design
- Easy to install
- Secure and protect your wire with our durable wall box



DGC-SBXXXXX-B

UNLOADED SURFACE MOUNT BOX CONCEALED TYPE

- Robust and installer friendly design
- Secure and protect your wire with our durable wall box
- Easy to install
- Concealed Type

TOOLS



DGC-3013ASTH

TOOL CABLE STRIPPER WITH CUTTER FOR LAN (UTP/STP)

- Light weight, compact stripper, simple to operate
- Strips UTP /STP wire and multi conductor cable dimension
- Uses adjustable knob for setting different insulation diameters
- Provides with cable cutting function



DGC-3013AMT02K

TOOL IMPACT TOOL WITH BLADES FOR 110 & KRONE IDC

- 110, 66 Block and Krone/ADC formats and blades
- User adjustable impact force with dial in the handle
- Impact Tool with interchangeable blades
- Extra Blade Storage in handle
- Heavy Duty



DGC-CRMTS

CRIMP TOOL WITH TESTER

- Saves time and makes installing LAN cables easy
- Multipurpose tool efficiently cuts and strips LAN cables up to 12 mm in diameter
- Wire crimper is compatible with all RJ45, RJ11, RJ12 modular plug types
- Ergonomically designed with non-slip handles for secure hand grip
- Built-in cable tester identifies wiring faults
- Immediately Test or Debug Newly Crimped or Existing In-Wall Network or Telecom Cables

RJ-45 CONNECTOR



DGC-RJ1UC5-C

RJ-45 CONNECTOR CAT 5E, UTP PLUGS, 3 PRONG

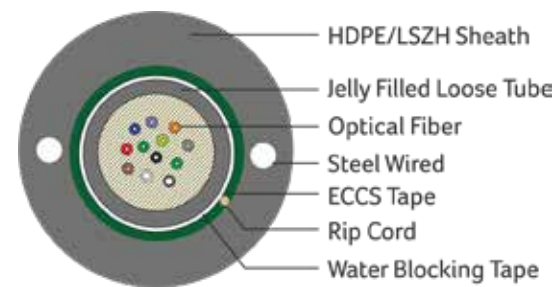
- RJ-45 modular plugs for Local Area Network (LAN) and computer applications
- Suitable for Solid or Stranded UTP cables
- 3-Prong Design for accurate termination
- Transparent



DGF-CAS2OUSH-06

SINGLE MODE UNITUBE ARMoured CABLE

- Suitable for Outdoor Network Direct Burial
- Polyester based yarns below Armour tape for easy ripping
- Thermoplastic Material Tube
- Excellent Waterproof Layer and Moisture Resistance
- Excellent Crush Resistance Performance



DGF-CAM3OUSH-06

MULTI-MODE UNITUBE ARMoured CABLE

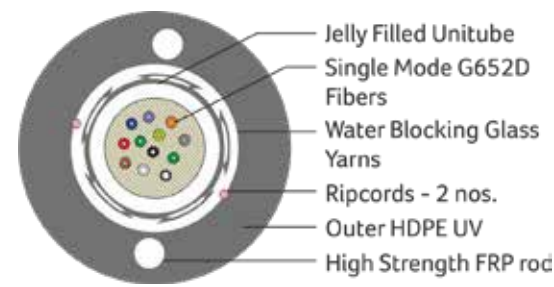
- Suitable for Outdoor Network Direct Burial
- Polyester based yarns below Armour tape for easy ripping
- Thermoplastic Material Tube
- Excellent Waterproof Layer and Moisture Resistance
- Excellent Crush Resistance Performance



DGF-CUS2OUSH-06

SINGLE MODE UNITUBE UN-ARMoured CABLE

- Suitable for Outdoor Network Direct Burial
- Un-Armoured design with High Strength FRP's & Glass Rovings
- Thermoplastic Material Tube
- Excellent Waterproof Layer and Moisture Resistance
- Excellent Crush Resistance Performance



DGF-CUM3OUSH-06

MULTI-MODE UNITUBE UN-ARMoured CABLE

- Suitable for Outdoor Network Direct Burial
- Un-Armoured design with High Strength FRP's & Glass Rovings
- Thermoplastic Material Tube
- Excellent Waterproof Layer and Moisture Resistance
- Excellent Crush Resistance Performance



DGF-CUS2TUSL-06

SINGLE MODE AND MULTI-MODE TIGHT-BUFFERED CABLE

- Suitable for aerial, Pipeline, Bracket Laying
- Suitable for Indoor and Outdoor Applications
- All Dielectric self-supporting ADSS
- Polyester based yarns tape for easy ripping
- Excellent Crush Resistance Performance



DGF-CAS2OMSH-06

SINGLE SHEATH MULTI-TUBE ARMoured CABLE

- Suitable for Outdoor Network Direct Burial
- Polyester based yarns below Armour tape for easy ripping
- Thermoplastic Material Tube
- Excellent Crush Resistance Performance
- Core covering Polyester Binder and Polyester tape
- Excellent Waterproof Layer and Moisture Resistance



DGF-CAS2OMDH-06

DOUBLE SHEATH MULTI-TUBE ARMoured CABLE

- Suitable for Outdoor Network Direct Burial
- Polyester based yarns below Armour tape for easy ripping
- Thermoplastic Material Tube
- Excellent Crush Resistance Performance
- Core covering Polyester Binder and Polyester tape
- Excellent Waterproof Layer and Moisture Resistance

PATCH CORDS



DGF-PS2DSCSCP3L

SINGLE MODE, LSZH PATCH CORD

- LSZH Jacket-Reduced Toxic Gasses Emitted During Combustion
- 100% Factory Tested
- Available with Corning Fiber
- Available in PC/APC Type Options
- High Precision Ceramic Ferrule with Good Concentricity
- Available in Simplex and Duplex Modes

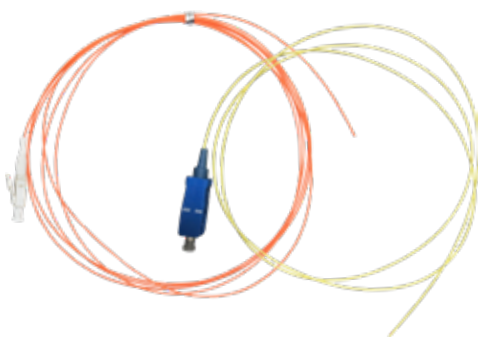


DGF-PM3DSCSCP3L

MULTI-MODE, LSZH PATCH CORD

- LSZH Jacket-Reduced Toxic Gasses Emitted During Combustion
- 100% Factory Tested
- Available with Corning Fiber
- Available in PC/APC Type Options
- High Precision Ceramic Ferrule with Good Concentricity
- Available in Simplex and Duplex Modes

PIGTAILS



DGF-TM2SLCP-2L

SINGLE MODE & MULTI-MODE, LSZH PIGTAILS

- LSZH Jacket-Reduced Toxic Gasses Emitted During Combustion
- 100% Factory Tested
- Available with Corning Fiber
- Available in PC/APC Type Options
- High Precision Ceramic Ferrule with Good Concentricity
- Available in Simplex Mode

Three Level Testing

DIGISOL Fiber Patch Cords and Pigtails go through 100% testing which include three levels as shown below:

LEVEL ONE

Visual inspection for scratch measurement



LEVEL TWO

Interferometry Test



LEVEL THREE

Optical Test

1. Insertion Loss measurement
2. Return Loss measurement

LIU's



DGF-LXXXUXX-2D

DRAWER TYPE LIU

- Available in Standard 19"
- Cold Rolled Steel as Raw Material
- Consist of Top Cover and Bottom Panel
- Easy to Assemble and Disassemble
- Three Types of Input Holes
- Cable Entry Through Waterproof Cable Clamp
- 24 Simplex SC or 12 Duplex LC Adapter Interface
- Splice 24 Fibers at Most with 1 Tray



DGF-LXXXUXX-2S

SLIDING TYPE LIU

- Cold Rolled Steel as Raw Material
- Versatile Panel with Expandable Double Slide Rails for Smooth Sliding
- 1U Installs 2 Pcs Standard Adapter Plates at Different Types
- Front Saddles Pivot for Improved Patch Cord Routing & Organization
- Available in Standard 19"
- Comprehensive Accessory Kit for Cable Entry and Fiber Management
- Patch Cord Bend Radius Guides Minimize Macro Bending
- Different Adapter Interface Including ST, SC, FC, LC etc.



DGF-LXXXUXX-1CD

WALL MOUNT 6 PORT COMPACT LIU TYPE DIN-RAIL DESIGN, UNLOADED

- Sleek and compact design
- Lightweight aluminium body
- Wall mount and DIN-Rail design
- Available in lock and key as a standard design feature
- Ideal solutions for telecom market customers such as ISPs, MSOs and System Integrators
- Cable glands for fiber cable entry
- In-built splice holder tray



DGF-LXXXUXX-2CD

WALL MOUNT 12 PORT COMPACT LIU TYPE
DIN-RAIL DESIGN, UNLOADED

- Customized requirements for 12 ports addressed
- Sleek and compact design
- Lightweight aluminium body
- Wall mount design and DIN-rail design
- Perfect for Surveillance solution needs
- Cable glands for fiber cable entry
- In-built splice holder tray



DGF-LXXXUXX-2W

WALL MOUNT FIBERLIU TYPE

- Cold Rolled Steel as Raw Material
- Consist of Top Cover & Bottom Panel
- Easy to Assemble and Dissemble
- Three Types of Input Holes
- Cable Entry Through Waterproof Cable Clamp
- 12 Duplex SC or LC Adapter Interface
- Patch Cord with Bend Radius Guides Minimize Macro Bending

ADAPTERS



DGF-ASMSFC-P

FC TYPE ADAPTERS

- Compact Design
- Telcordia GR-326-Core
- RoHS Compliance
- Low Insertion and Return Loss
- Self Adjusting Metal Panel Clips
- Available in Flange Mount or D Hole Mount Adapter Styles
- Available in Simplex and Duplex Types



DGF-ASMDLC-P

LC TYPE ADAPTERS

- Small Footprint
- Telcordia GR-326-Core
- RoHS Compliance
- Low Insertion and Return Loss
- Self Adjusting Plastic Clips
- Available in Simplex and Duplex Types



DGF-ASMSSC-P

SC TYPE ADAPTERS

- Compact Design
- Telcordia GR-326-Core
- RoHS Compliance
- Low Insertion and Return Loss
- Available In Simplex and Duplex Types



DGF-ASMSST-P

ST TYPE ADAPTERS

- Compact Design
- Telcordia GR-326-Core
- RoHS Compliance
- Low Insertion and Return Loss
- Choice of Flange Options
- Self Adjusting Metal Panel Clips

FTTH SPLITTERS



DGF-SRSSCA1-2

FTTH RACK TYPE SPLITTERS

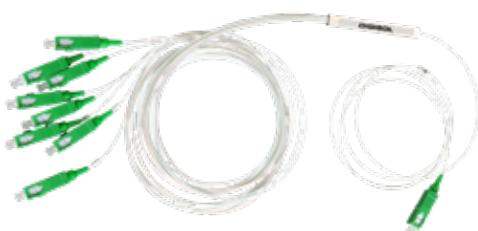
- Low insertion loss
- Low Polarization Dependent Loss
- High Reliability
- Wide wavelength range
- High Return Loss and good Repeatability
- Excellent channel to channel uniformity
- Excellent Environmental Stability
- Excellent Mechanical Stability
- Telcordia GR-1221 and GR-1209



DGF-SBSSCA1-2

FTTH BOX TYPE SPLITTERS

- Low Polarization Dependent Loss
- Low insertion loss
- High Reliability
- Wide wavelength range
- High Return Loss and good Repeatability
- Excellent channel to channel uniformity
- Excellent Environmental Stability
- Excellent Mechanical Stability
- Telcordia GR-1221 and GR-1209



DGF-STSSCA1-2

FTTH TUBE TYPE SPLITTERS

- Low insertion loss
- High Reliability
- Low Polarization Dependent Loss
- High Return Loss and good Repeatability
- Wide wavelength range
- Excellent channel to channel uniformity
- Excellent Environmental Stability
- Excellent Mechanical Stability
- Telcordia GR-1221 and GR-1209

FDB



DGF-DBXXXX-6

FTTH FIBER DISTRIBUTION BOX, 6 CORE

- Full Enclosed & Ergonomic Design
- Meets IP65 Grade for wet-proof, water-proof and anti-aging
- Hinged Splice tray for easy installation and maintenance
- Feeder cable and Drop cable fixation, Fiber Splicing, Storage and Distribution
- Separate cable pathway design
- Modular adapter holder design
- Wall Mounted or Pole mounted
- Suitable for Indoor and Outdoor Use
- Available in 8 core and 12 core

CONNECTORS



DGF-CFSSSC-A / DGF-CFSSSC-P

FIBER OPTIC FIELD ASSEMBLY CONNECTORS

- DGF-CFSSSC-A SM, SC, APC Type
- DGF-CFSSSC-P SM, SC, PC Type
- Industry leading double V groove alignment clamping mechanism
- User friendly and cost effective
- Superior qualified standard PC, APC, UPC polishing
- Reliable and superior optical performance
- Good exchange ability and good reliability
- No electricity required
- Cable tensile test complies with GR-326-CORE
- No epoxy and polishing required
- Only three pre-assembly parts

OUTLET



DGF-FOSSXX2-WH

FTTH BOX TYPE OUTLET

- Indoor FTTH and Fiber Optic CATV Application
- Inner tray for splice sleeve
- Compact design
- Available with SC Simplex or LC Duplex

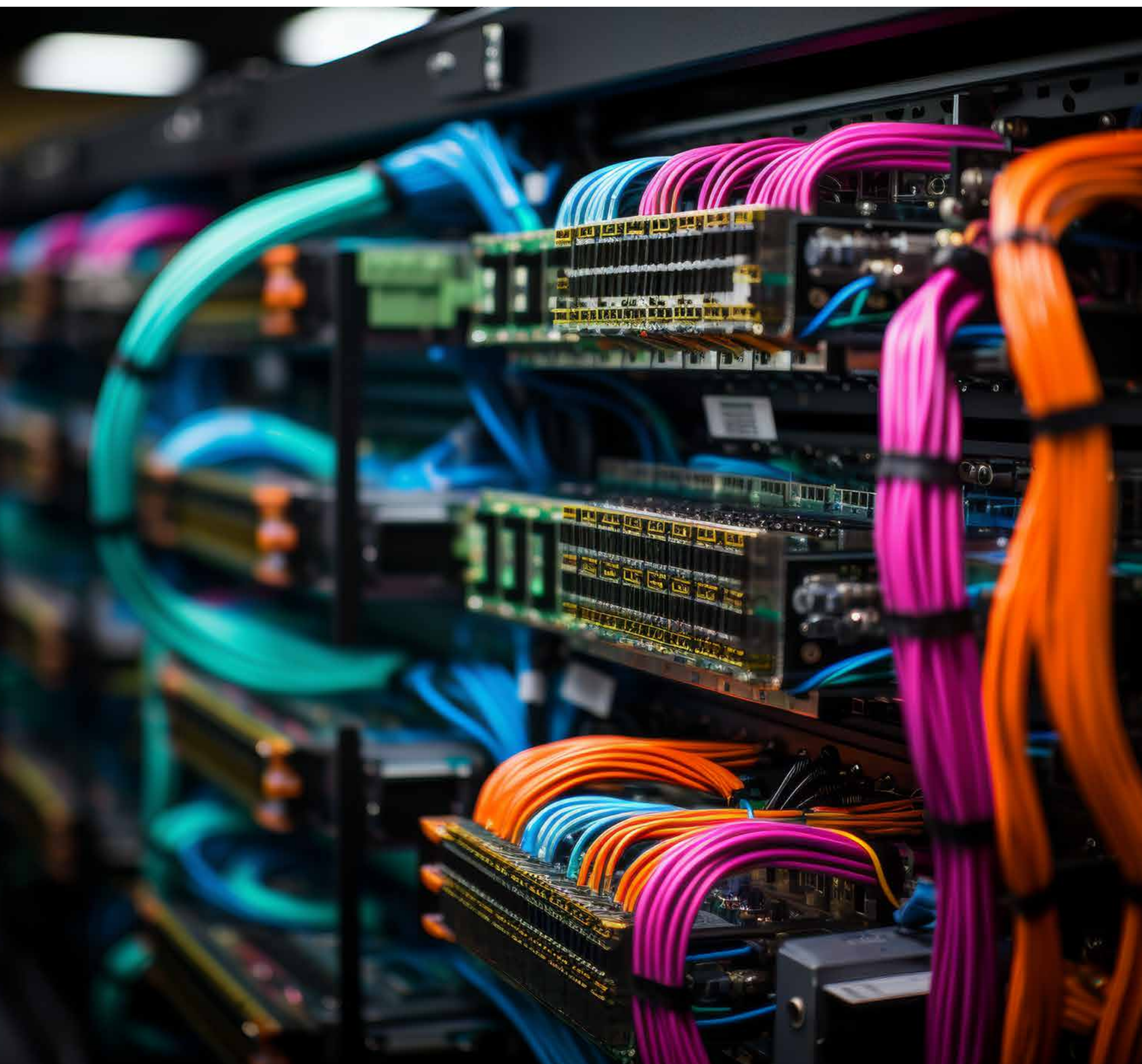
DROP CABLE



DGF-CFS3IL-02

FTTH DROP CABLE

- Simple Structure
- Light Weight
- Novel Groove Design
- Easily Strip and Splice
- High Tensile Strength and Metal Free
- Simplified Installation and Maintenance
- LSZH and Flame-Retardant Sheath
- Environment Friendly and Good Safety



DIGISOL[®]

DIGISOL SYSTEMS LIMITED

Registered Office:

L-7, Verna Industrial Estate, Salcete,
Goa India - 403722

1800-209-3444 • helpdesk@digisol.com • www.digisol.com

 @DIGISOLINDIA  @digisol_solutions

 @DIGISOL_SNSL  @DIGISOL SYSTEMS LIMITED