

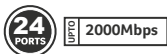
DIGISOL[®]

**INDIA'S OWN
IT NETWORKING
CHOICE**

Quick Installation Guide

24 Port Gigabit Ethernet Rack-Mount Unmanaged Switch

DG-GS1024/E (H/W Ver. B1)



V1.1
26-09-2025

Copyright

Copyright 2025 by DIGISOL SYSTEMS LTD. All rights reserved.
Company has an on-going policy of upgrading its products and it may be possible that information in this document is not up-to-date.
Please check with your local distributors for the latest information.
No part of this document can be copied or reproduced in any form without written consent from the company.

Trademarks:

DIGISOL® is a trademark of DIGISOL SYSTEMS LTD. All other trademarks are the property of the respective manufacturers.

Package Contents :

The following items should be present in your package:

- Switch (1 No)
- Power cord (1 No)
- Screws M3 x 6
- Rack mounting ear
- Rubber pad x 4
- Earth ground cable
- Quick installation guide

Make sure that the package contains above items.

Product Overview :

This document will guide you on the correct use of products, to prevent any loss or damage to the device to avoid void of warranty. Please read the instructions carefully before using the equipment and strictly observe while using it.

This unmanaged switch support 24 nos of ports with isolation, link aggregation, flow control mode.

Precautions :

- Do not install the equipment in direct sunlight or near any equipment that generates high amount of heat
- Do not install the equipment in damp, dusty or sooty places
- Always keep the equipment installed horizontally, or on a stable platform to prevent the product from falling
- Do not drop or spill liquids on the equipment and ensure that liquid-filled items are not spilled on the equipment
- Prevent any sort of liquid from flowing into equipment
- Install the switch in a well-ventilated place. Do not block the ventilation vent of the equipment
- Equipment can only be used within the permissible input and output range
- Do not disassemble the equipment by your own self
- Maintain the range of humidity while storing or during transportation

Disclaimer :

Instructions and procedures will be updated consistently according to the product upgradation without subject to any prior notice. If any of the instructions mentioned in the guide are not followed by the user, the loss will be borne by the user. Instructions may contain technical inaccuracies or inconsistencies with product functions and operations, or printing errors, in accordance with the company's final interpretation.

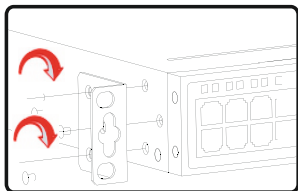
Product Characteristics :

- Supports 24 *1000 Mbps Ports
- The switching capacity is 48Gbps
- Packet Forwarding Rate: 35.71Mpps
- MAC automatic learning and aging, the capacity of MAC address list is 4K
- Port automatically adapts to MDI/MDIX mode
- Support AC: 90V-260V, 50/60Hz power supply

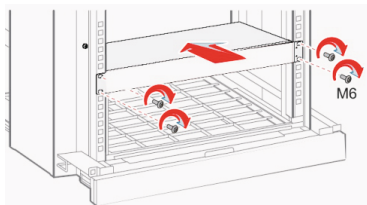
Install devices into the cabinet :

❖ Perform the following steps to install an UN switch in a cabinet

❶ Install mounting ears.

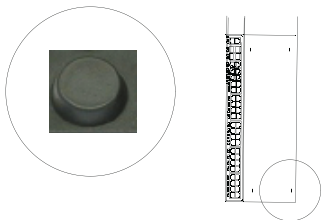


❷ Secure the mounting ears to front vertical mounting flanges using M6 screws, and install the switch in the cabinet.

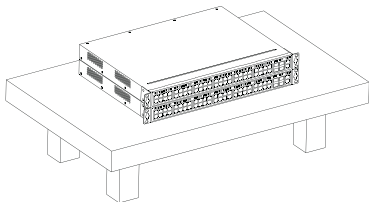


❖ Installing a Switch on a Workbench

- 1 Attached rubber pads.

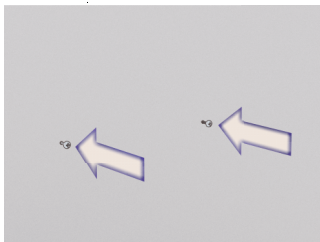


- 2 Install the device to the workbench.

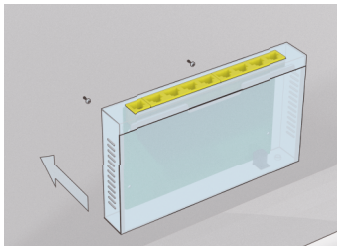


❖ Installing a Switch on a Wall

- 1 Drive M3 screws into the wall.



- 2 Hang the switch on the screws.



Note:

Determine the positions of screws on the wall according to the mounting hole distance on the switch, which may vary with switch types.

❖ Connecting an Earth Ground Cable

- ❶ Remove the screw from the earth ground point.



- ❷ Connect the earth ground cable with the earth ground point and fasten the screw.



❖ Product Feature and DIP Switch

- Standard Mode : Enable the flow control function.
- Port Isolation : Ports 1-22 do not communicate with each other and ports 23-24 are the upper interface.
- Link aggregation : Provides a group of aggregation. Port members are ports 23 to 24.
- Flow control shutdown : The flow control function is disabled.

❖ Connection a Power Cable

Warning: Never install a power cable while it is electrified.

Do not power on a switch before installation and cabling are completed, Make sure that the switch is grounded reliably.

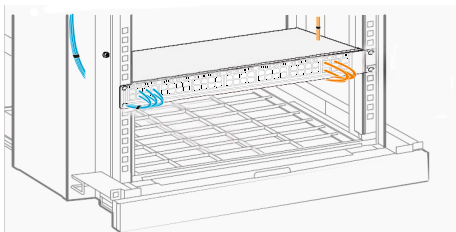
After installing the power module, connect the power cable to the power module of the switch.



❖ Laying Out Cables

Warning: To prevent laser radiation from injuring eyes, do not look into the end face of the fiber or fiber connector directly with naked eyes.

A power cable bundle should be more than 10 cm away from a signal cable bundle.



DIGISOL[®]

WARRANTY

This Product is covered under DIGISOL Warranty program backed by DIGISOL Service Center. To avail this Warranty offer, customer needs to contact DIGISOL's Technical Assistance Center for the same. You may be asked to provide proof of purchase of product for warranty claim of defective product. Please refer website www.digisol.com for the detailed support terms & conditions and support process.

Warranty Policy

1. **Hardware Warranty :** Hardware warranty period shall be limited up to Three years. External Power Adapter shall carry One year warranty only against manufacturing defects. Any repair or replacement will be rendered by DIGISOL at its Service Center only.
2. **Software Warranty :** DIGISOL issues this Limited Software Warranty that the software portion of the product ("Software") will substantially conform to DIGISOL's then current functional specifications for the software, as set forth in the applicable documentation, from the date of original retail purchase of the Software for a period of one year ("Software Warranty period"), provided that the Software is properly installed on approved hardware and operated as contemplated in its documentation.
3. **Governing Law:** This warranty shall be governed by Indian Laws.
4. **Warranty shall subject to the terms & conditions specified in the DIGISOL Product Warranty policy displayed on www.digisol.com**
5. **To avail and activate warranty for your product.**
Kindly register your product by calling us @1800 209 3444

DIGICARE



helpdesk@digisol.com



1800 209 3444






DIGISOL SYSTEMS LIMITED

L-7, Verna Industrial Estate,
Salcete, GOA - 403722

www.digisol.com

DIGICARE

 **1800 209 3444**

 helpdesk@digisol.com