

DIGISOL[®]

**INDIA'S OWN
IT NETWORKING
CHOICE**

Quick Installation Guide

24 Port Gigabit Web Managed PoE+ Switch with 2 Giga Combo + 2 Gigabit SFP Ports PoE Budget: 270W

DG-GS1528HP/C



UPTO 2000Mbps

INDIA
ER NO. : TEC37942308
MODEL NO. : DG-GS1528HP/C
CERTIFICATE NO. : 379401570
ISSUED DATE : 11-JAN-2024
VALIDITY UPTO : 10-JAN-2034
COUNTRY OF ORIGIN : INDIA
COUNTRY OF MANUFACTURING : INDIA



V1.1
09-12-2025

Copyright

Copyright 2025 by DIGISOL SYSTEMS LTD. All rights reserved.
Company has an on-going policy of upgrading its products and it may be possible that information in this document is not up-to-date.
Please check with your local distributors for the latest information.
No part of this document can be copied or reproduced in any form without written consent from the company.

Trademarks:

DIGISOL® is a trademark of DIGISOL SYSTEMS LTD. All other trademarks are the property of the respective manufacturers.

Products Introduction

The DG-GS1528HP/C is a Web Managed PoE Switch. It provides 24 10/100/1000Mbps Auto-Negotiation RJ45 PoE ports and 2 Combo (RJ45+SFP) + 2 Gigabit SFP Ports. It supports the port's full line speed forwarding to ensure the stable transmission of data. This switch can be used as a small local core network or a small & medium-sized LAN network. This product is a Gigabit network management type PoE Switch which can satisfy the full speed of forwarding ports. The machine uses 19" 1U and so can be used on the desktop or on the rack. Excellent performance can help you widely use in wireless, monitoring and other fields.

24 Port 10/100/1000Base-TX with 2 Combo (RJ45+SFP) + 2 Gigabit SFP and 24 PoE+ L2 Web Managed Switch

Front Panel



Indicator light	Colour	Description
PWR LED	Green	Solid: Switch is powered On
		Off: Switch is powered Off
Data LNK / ACT LED	Green	Solid: Network device is connected
		Blinking: Data transmission
		Off: No network device connected
PoE	Green	On: PoE device powered On
		Off: PoE device not connected



Note: the SFP ports 25, 26 are shared with gigabit RJ45 ports 25, 26. When SFP port 25, 26 is used, the RJ45 port 25, 26 cannot be used



Warning: The SFP ports should use UL listed Optical Transceiver product, Rated Laser Class I. 3.3Vdc.

Rear Panel



Power: The power port is where to connect the AC power cord.

Switch: Used to connect the power supply.

Fuse: Prevent affect of power grid from equipment short circuit. (containing a spare fuse)

Hardware Installation

Hardware installation

This chapter provides unpacking and installation information for the Managed PoE switch.

First step: open a seal

Open the shipping carton and carefully unpack its contents. Please consult the packing list located in the User Manual to make sure all items are present and not damaged. If any item is missing or damaged, please contact the local reseller for replacement.

- Switch 1pcs
- AC power cord 1pcs
- Rubber feet 4pcs
- Screws 6pcs
- Mounting brackets 2pcs

If any item is found missing or damaged, please contact the local reseller for replacement.

Second step: switch installation

For safe switch installation and operation, it is recommended that you:

- Visually inspect the power cord to see that it is secured fully to the AC power connector.
- Make sure that there is proper heat dissipation and adequate ventilation around the switch.
- Do not place heavy objects on the switch.

Desktop or Shelf Installation

When installing the switch on a desktop or shelf, the rubber feet included with the device must be attached on the bottom at each corner of the device's base. Allow enough ventilation space between the device and the objects around it.

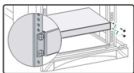


Rack Installation

The switch can be mounted in an EIA standard size 19-inch rack, which can be placed in a wiring closet with other equipment. To install, attach the mounting brackets to the switch's side panels (one on each side) and secure them with the screws provided (please note that these brackets are not designed for palm size switches).



Then, use the screws provided with the equipment rack to mount the switch in the rack.



Please be aware of following safety Instructions when installing:

- A) Elevated Operating Ambient - If installed in a closed or multi-unit rack assembly, the operating ambient temperature of the rack environment may be greater than room ambient. Therefore, consideration should be given to installing the equipment in an environment compatible with the maximum ambient temperature (T_{ma}) specified by the manufacturer.
- B) Reduced Air Flow - Installation of the equipment in a rack should be such that the amount of air flow required for safe operation of the equipment is not compromised.
- C) Mechanical Loading - Mounting of the equipment in the rack should be such that a hazardous condition is not achieved due to uneven mechanical loading.
- D) Circuit Overloading - Consideration should be given to the connection of the equipment to the supply circuit and the effect that overloading of the circuits might have on overcurrent protection and supply wiring. Appropriate consideration of equipment nameplate ratings should be used when addressing this concern.
- E) Reliable Earthing - Reliable earthing of rack-mounted equipment should be maintained. Particular attention should be given to supply connections other than direct connections to the branch circuit (e.g. use of power strips)."

Third step: Plugging in the AC Power Cord

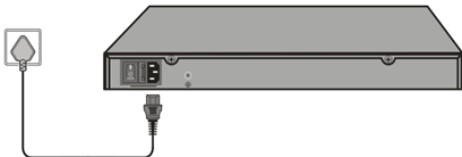
You can connect AC power supply cord to switch back and the other side connect the power outlet. (power outlet might as well grounding and support over voltage protection)



Warning: Do not turn on the power switch before power cables are connected. Power surge may cause damage to the Switch.



Warning: The installation instructions clearly state that the ITE is to be connected only to PoE networks without routing to the outside plant.



Power failure

As a precaution, the switch should be unplugged in case of power failure. When power is resumed, plug the switch back in.

3. Getting Started

This chapter introduces the management interface of Managed PoE switch.

Management Option

The Web Managed PoE switch can be managed through any port on the device by using the Web-based management.

Each switch must be assigned its own IP address, which is used for communication with Web-Based Management or a SNMP network manager. The PC should have an IP address in the same range as the switch.

Please refer to the following installation instructions for the Web-based Management.

Using Web-based Management

After a successful physical installation, you can configure the Switch, monitor the network status, and display statistics using a web browser.

Supported Web Browsers

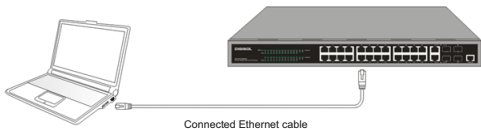
The embedded Web-based Management currently supports the following web browsers:
Internet Explorer 6 or higher version
Netscape 8 or higher version
Mozilla
Firefox 1.5/2.0 or higher version

Connecting to the Switch

You will need the following equipment to begin the web configuration of your device:

1. A PC with a RJ-45 Ethernet connection
2. A standard Ethernet cable

Connect the Ethernet cable to any of the ports on the front panel of the switch and to the Ethernet port on the PC.



Login Web-based Management

In order to login and configure the switch via an Ethernet connection, the PC must have an IP address in the same subnet as the switch. For example, if the switch has an IP address of **192.168.0.1**, the PC should have an IP address of **192.168.0.X** (where x is a number between 2 ~ 254), and a subnet mask of **255.255.255.0**. Open the web browser and enter **192.168.0.1**(the factory-default IP address) in the address bar. Then press <Enter>.



Open the web browser and enter **192.168.0.1**(the factory-default IP address) in the address bar. Then press <Enter>.

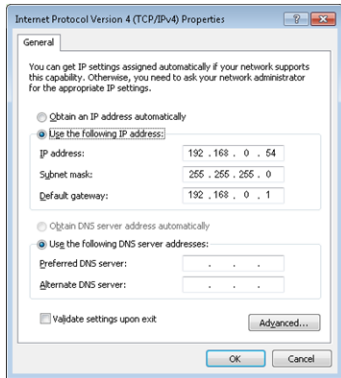


Enter the IP address in the web browser



NOTE: The switch's factory default IP address is 192.168.0.1 with a subnet mask of 255.255.255.0

To log in to the switch, the IP address of your PC should be set in the same subnet as that of the switch. The IP address is 192.168.0.x ("x" is any number from 2 to 254). Subnet Mask is 255.255.255.0.



When the following logon dialog box appears, enter the password then click **OK**. By default, the username is **admin** and the password is **admin**.



Logon Dialog Box

1. WEB page elements

Shown in Figure 2, WEB page is mainly composed of three parts: title page, navigation tree page and main page

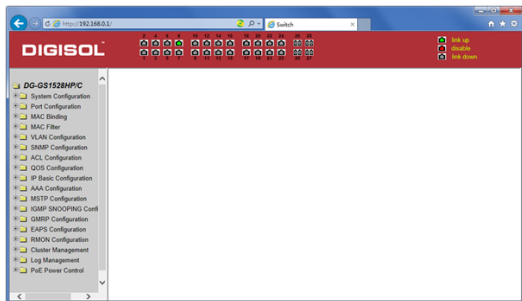


Figure 2

Title page is Used to display the logo

Main page is used to display the user from the navigation tree, select the page

DIGISOL[®]

WARRANTY

This Product is covered under DIGISOL Warranty program backed by DIGISOL Service Center. To avail this Warranty offer, customer needs to contact DIGISOL's Technical Assistance Center for the same. You may be asked to provide proof of purchase of product for warranty claim of defective product. Please refer website www.digisol.com for the detailed support terms & conditions and support process.

Warranty Policy

1. **Hardware Warranty** : Hardware warranty period shall be limited up to Three years. External Power Adapter shall carry One year warranty only against manufacturing defects. Any repair or replacement will be rendered by DIGISOL at its Service Center only.
2. **Software Warranty** : DIGISOL issues this Limited Software Warranty that the software portion of the product ("Software") will substantially confirm to DIGISOL's then current functional specifications for the software, as set forth in the applicable documentation, from the date of original retail purchase of the Software for a period of one year ("Software Warranty period"), provided that the Software is properly installed on approved hardware and operated as contemplated in its documentation.
3. **Governing Law**: This warranty shall be governed by Indian Laws.
4. Warranty shall subject to the terms & conditions specified in the DIGISOL Product Warranty policy displayed on www.digisol.com
5. To avail and activate warranty for your product.
Kindly register your product by calling us @1800 209 3444

DIGICARE



helpdesk@digisol.com



1800 209 3444







DIGISOL SYSTEMS LIMITED

L-7, Verna Industrial Estate,
Salcete, GOA - 403722

www.digisol.com

DIGICARE

 **1800 209 3444**

 helpdesk@digisol.com